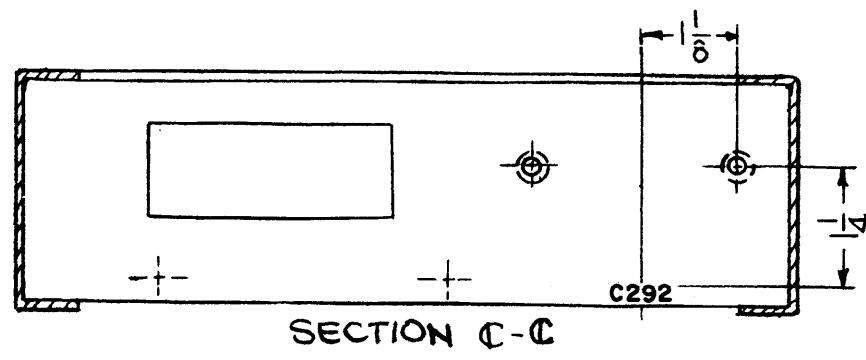


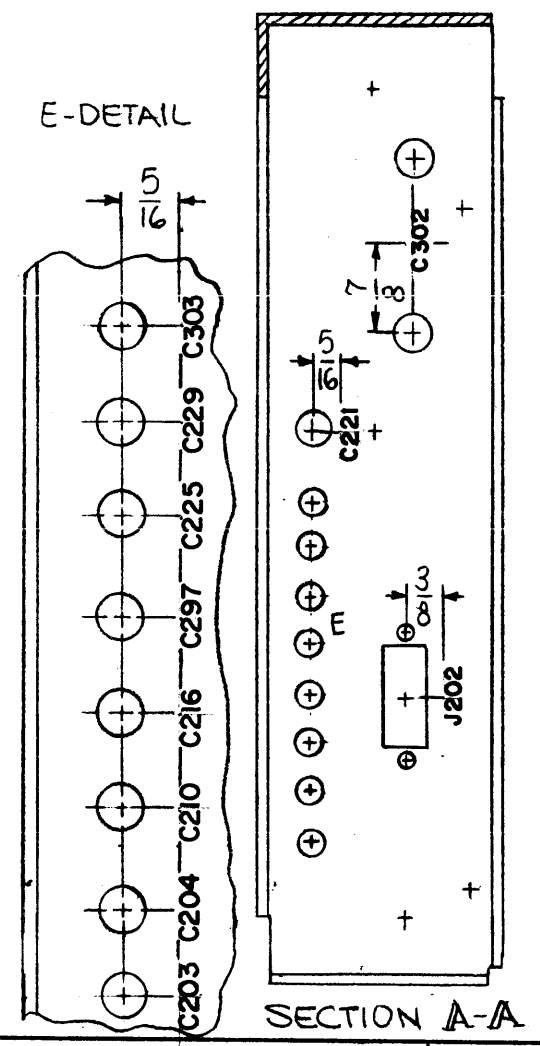
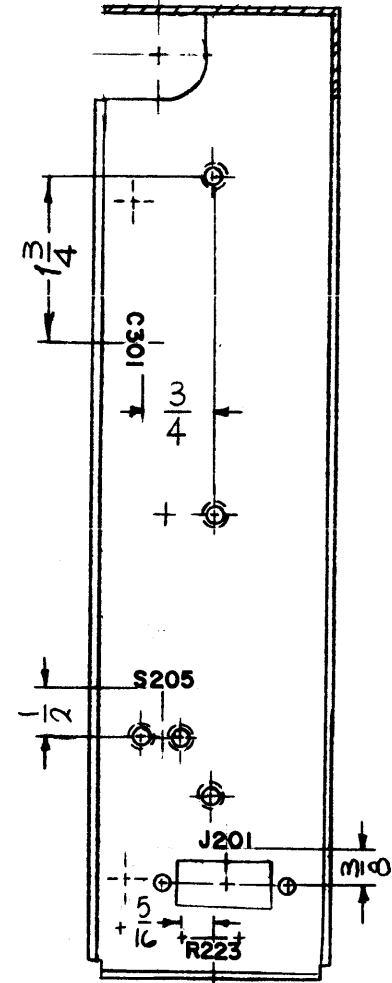
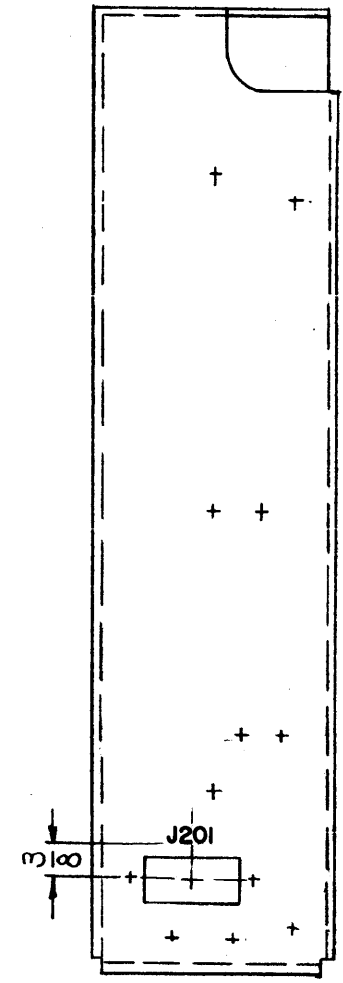
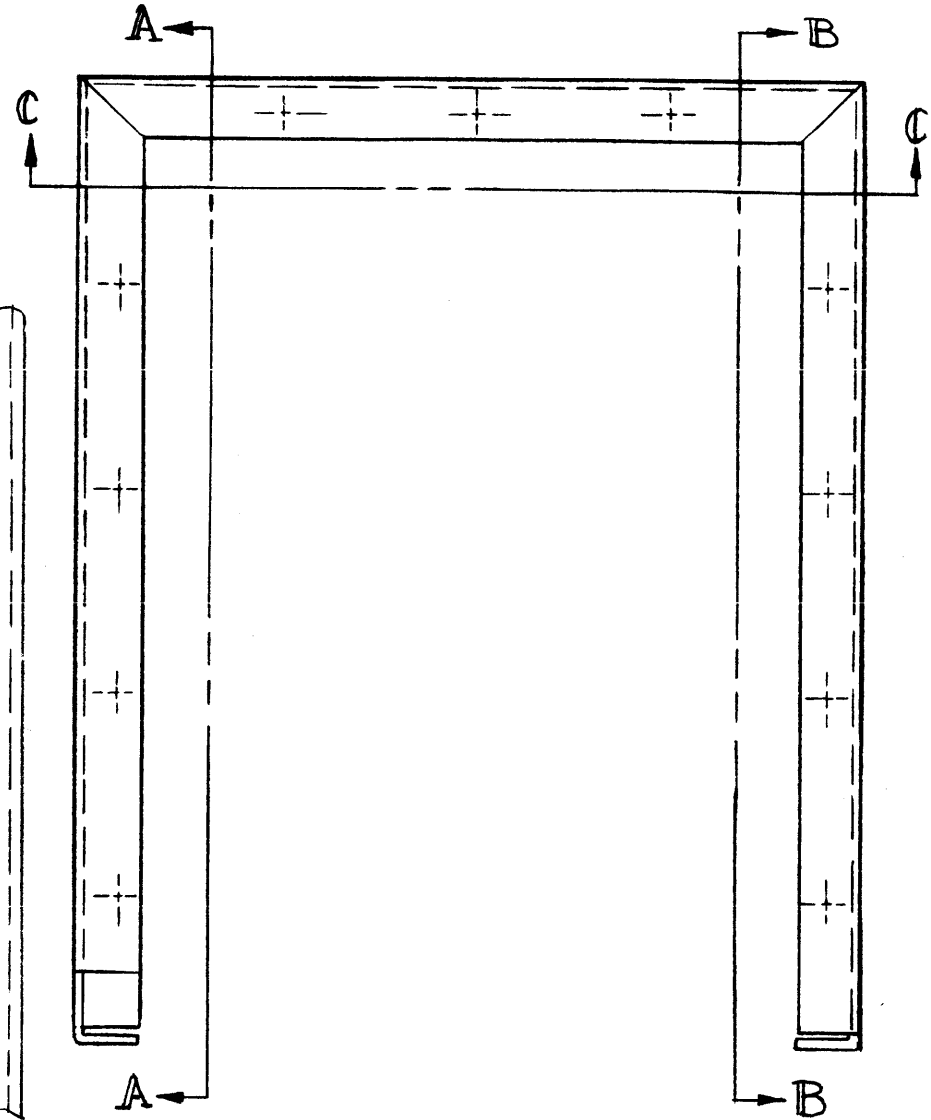
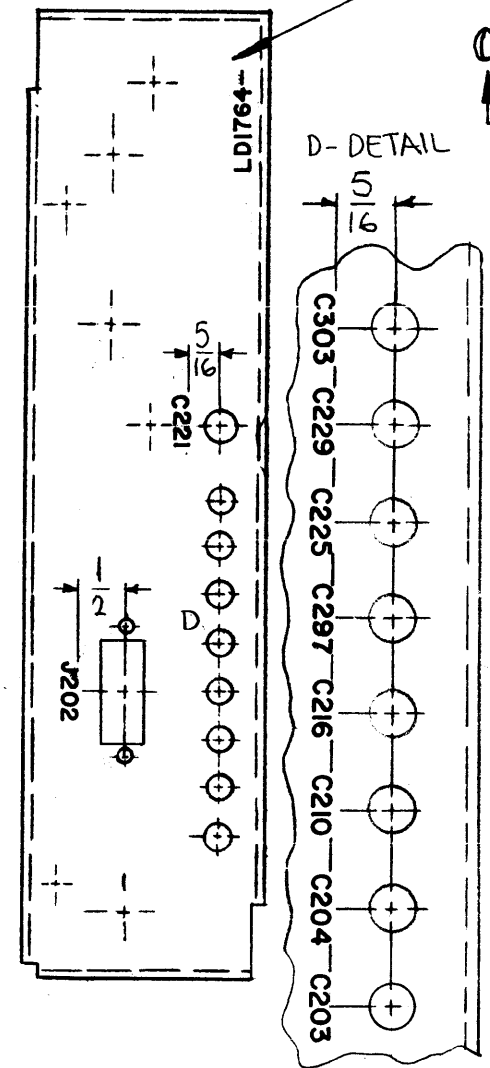
LD1764

REVISIONS

SYM	DESCRIPTION	DATE	E.M.N. NO.	DRAFT	CHKD	APPD
X	EXP. RELEASE	1-21-65	X	SRG		
X1	LETTERING ADDED	5-18-65	X1	SRG		
X2	C203 ADDED	6-28-65	X2	SRG		
Ø	ORIGINAL RELEASE FOR PRODUCTION	5-23-66	Ø	CV		JH



MARK TMC P/N
 8 HIGH GOTHIC
 W/LATEST REVISION
 LETTER



MARKING PROCESS: AS PER TMC SPECIFICATION S-727.
 LETTERING: 3/32 HIGH BLACK GOTHIC, LOCATED AS SHOWN.

REF: MS4306

REQ'D.	ITEM	PART NUMBER	DESCRIPTION	SYMBOL
F. BUDETTI LIST OF MATERIAL				
MATERIAL			THE TECHNICAL MATERIEL CORP.	
FINISH			MAMARONECK, NEW YORK	
TITLE			MARKING, CHASSIS CAPACITOR MTG.	
DRAWN			MARKING PROCESS AS PER TMC SPEC. S727	
CHECKED			DATE	DATE
ELECT. DES.			DATE	DATE
MECH. DES.			DATE	DATE
TOLERANCES			LD1764	
DECIMALS			SHEET	
FRACTIONS			REV. LTR.	
ANGLES				
± 0° 30'				

NOTES

THE CONTENTS OF THIS DRAWING ARE THE EXCLUSIVE PROPERTY OF THE TECHNICAL MATERIEL CORP. ITS UNAUTHORIZED USE OR REPRODUCTION IN WHOLE OR IN PART IS STRICTLY FORBIDDEN.