

7

6

5

4

3

2

1

REVISIONS						
ZONE	SYM	DESCRIPTION	DATE	E.M.N. NO.	DRAFT	CHKD APPD
X		EXP. RELEASE	1-19-65	X	SRG	
XI		LETTERING ADDED	6-9-65	XI	SRG	SRG
Ø		ORIGINAL RELEASE FOR PRODUCTION	6.7.66	Ø	WFO	WFO

H

G

F

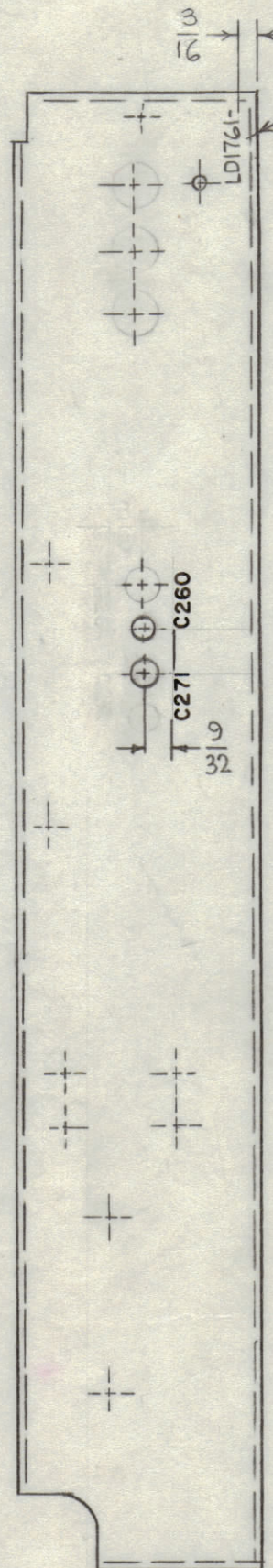
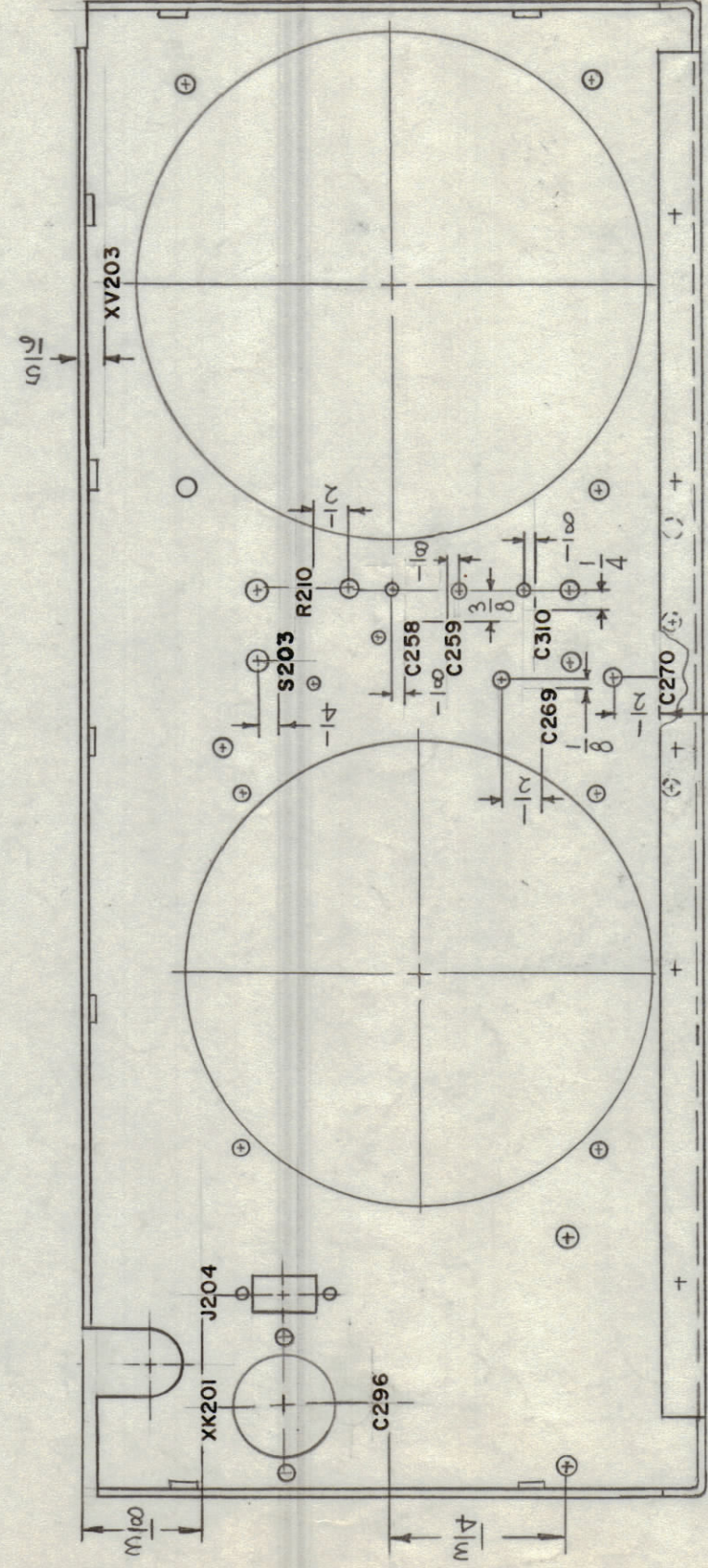
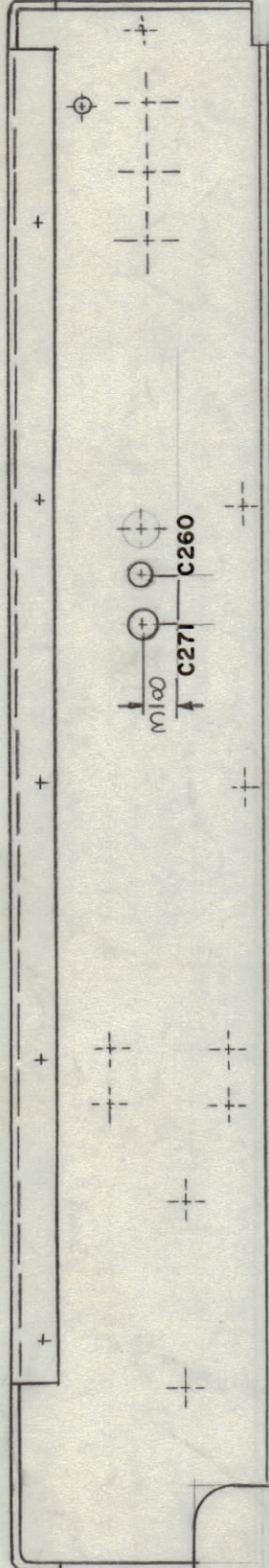
E

D

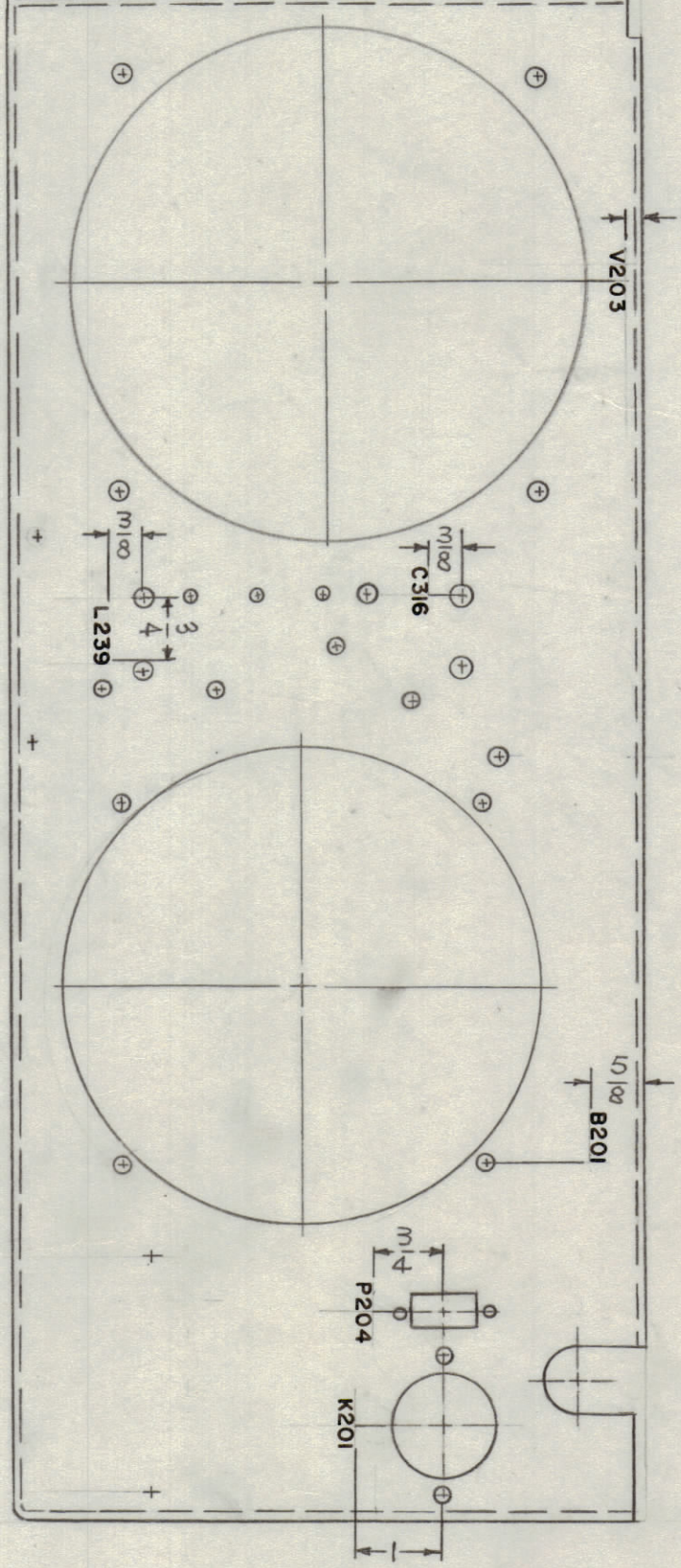
C

B

A



MARK TMC PART NO.
W/LATEST REV.
LETTER.



LD1761
Ø

MARKING PROCESS: AS PER TMC SPECIFICATION S-727.
LETTERING: 1/8 HIGH BLACK GOTHIC, LOCATED AS SHOWN.

NOTES

I		RFTA-1	
Q'TY./UNIT	MODEL USED ON	ASS'Y. NO.	
SCALE 1/2:1	CODE A		
THE CONTENTS OF THIS DRAWING ARE THE EXCLUSIVE PROPERTY OF THE TECHNICAL MATERIEL CORP. ITS UNAUTHORIZED USE OR REPRODUCTION IN WHOLE OR IN PART IS STRICTLY FORBIDDEN.			

REF: MS 4303

REQ'D.	ITEM	PART NUMBER	DESCRIPTION	SYMBOL
F. BUDETTI LIST OF MATERIAL				
MATERIAL		THE TECHNICAL MATERIEL CORP. MAMARONECK, NEW YORK		
FINISH		TITLE MARKING CHASSIS FINAL AMPL. MARKING PROCESS: AS PER TMC SPEC S-727		
UNLESS OTHERWISE SPECIFIED DIMENSIONS ARE IN INCHES AND INCLUDE CHEMICALLY APPLIED OR PLATED FINISHES		DRAWN SRG	DATE 1-19-65	FINAL APPROVAL
DECIMALS .X ± .05 .XX ± .01 .XXX ± .005		CHECKED	DATE	DATE
FRACTIONS ± 1/64 ANGLES ± 0° 30'		ELECT. DES.	DATE	DATE
TOLERANCES		MECH. DES.	DATE	DATE
SHEET				REV. LTR.

7

6

5

4

3

2

1