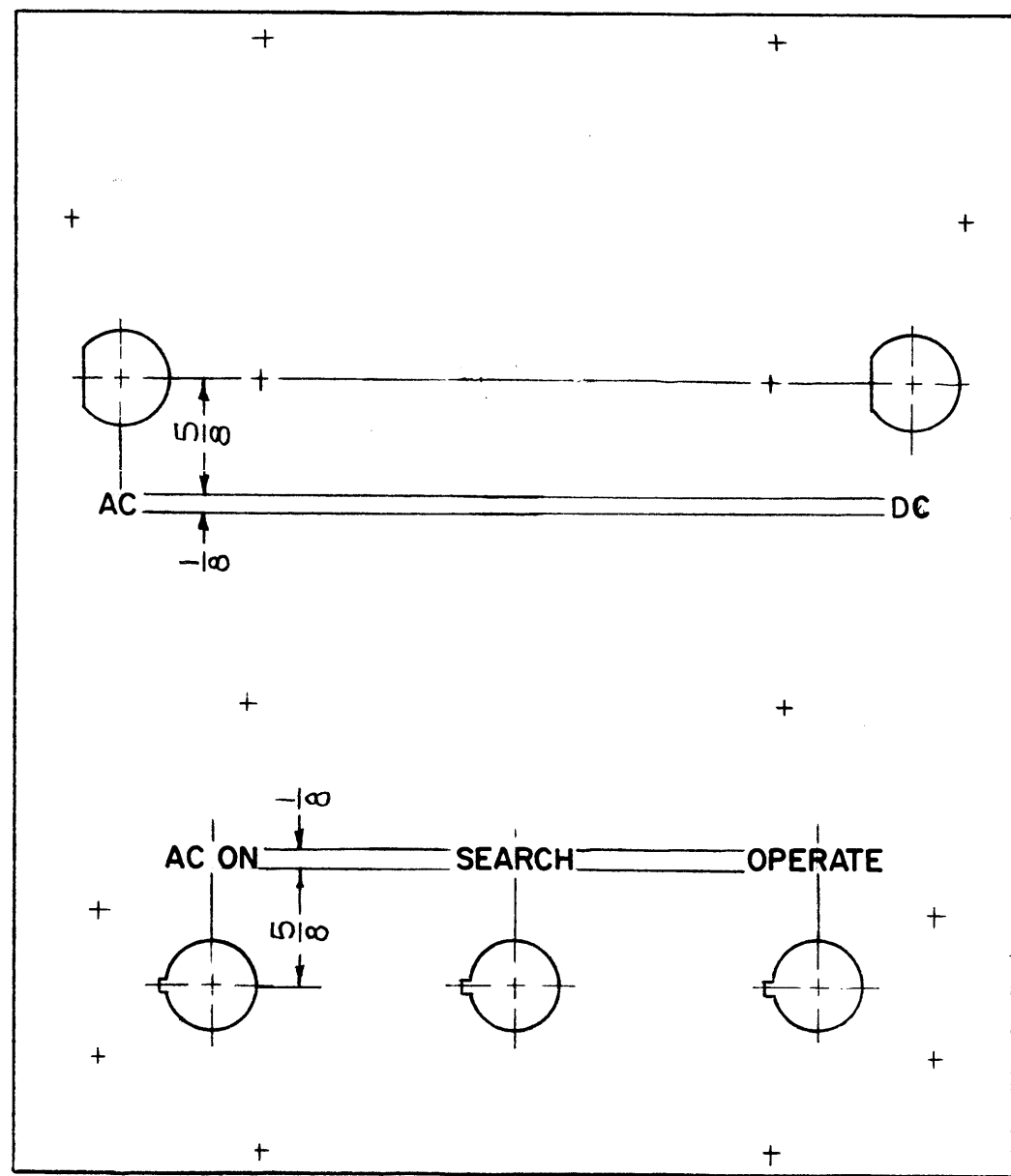


LD1750

REVISIONS						
SYM	DESCRIPTION	DATE	E.M.N. NO.	DRAFT	CHKD	APPD
X ₁	REMOVED TITLE INSERTS, REPLACED BY NAME PLATE	4-1-65	X ₁	SRG		
Ø	ORIG RELEASE FOR PRODUCTION	5-5-67	Ø	RG		



HEIGHT OF LETTERS	DEPTH OF STROKE	WIDTH OF STROKE
1/8	.010	.020

NOTES.
 - ALL LETTER GROUPS TO BE CENTERED ON HOLES.
 - ENGRAVING TO BE GOTHIC WHITE FILLED SIZES SHOWN.

MARK TMC PART NO.
 LD1750- /MS4292-
 1/8 HIGH GOTHIC W/LATEST
 REV. LETTER (ON REAR).

REF: MS4292

REQ'D.	ITEM	PART NUMBER	DESCRIPTION	SYMBOL
F. BUDETTI LIST OF MATERIAL				
MATERIAL		THE TECHNICAL MATERIEL CORP. MAMARONECK, NEW YORK		
FINISH		TITLE MARKING, PANEL FRONT, SERVO MODULE MARKING PROCESS: ENGRAVING		
UNLESS OTHERWISE SPECIFIED DIMENSIONS ARE IN INCHES AND INCLUDE CHEMICALLY APPLIED OR PLATED FINISHES		DRAWN SRG	DATE 3-16-65	FINAL APPROVAL <i>[Signature]</i>
DECIMALS .X ± .05 .XX ± .01 .XXX ± .005		CHECKED <i>[Signature]</i>	DATE	DATE 5/5/67
FRACTIONS ± 1/64 ANGLES ± 0° 30'		ELECT. DES. <i>[Signature]</i>	DATE	DATE
TOLERANCES		MECH. DES. <i>[Signature]</i>	DATE	DATE
SHEET				REV. LTR. Ø

1 EA.	TSTE 10K	
Q'TY./UNIT	MODEL USED ON	ASS'Y. NO.
SCALE 1:1	CODE A	

THE CONTENTS OF THIS DRAWING ARE THE EXCLUSIVE PROPERTY OF THE TECHNICAL MATERIEL CORP. ITS UNAUTHORIZED USE OR REPRODUCTION IN WHOLE OR IN PART IS STRICTLY FORBIDDEN.

NOTES