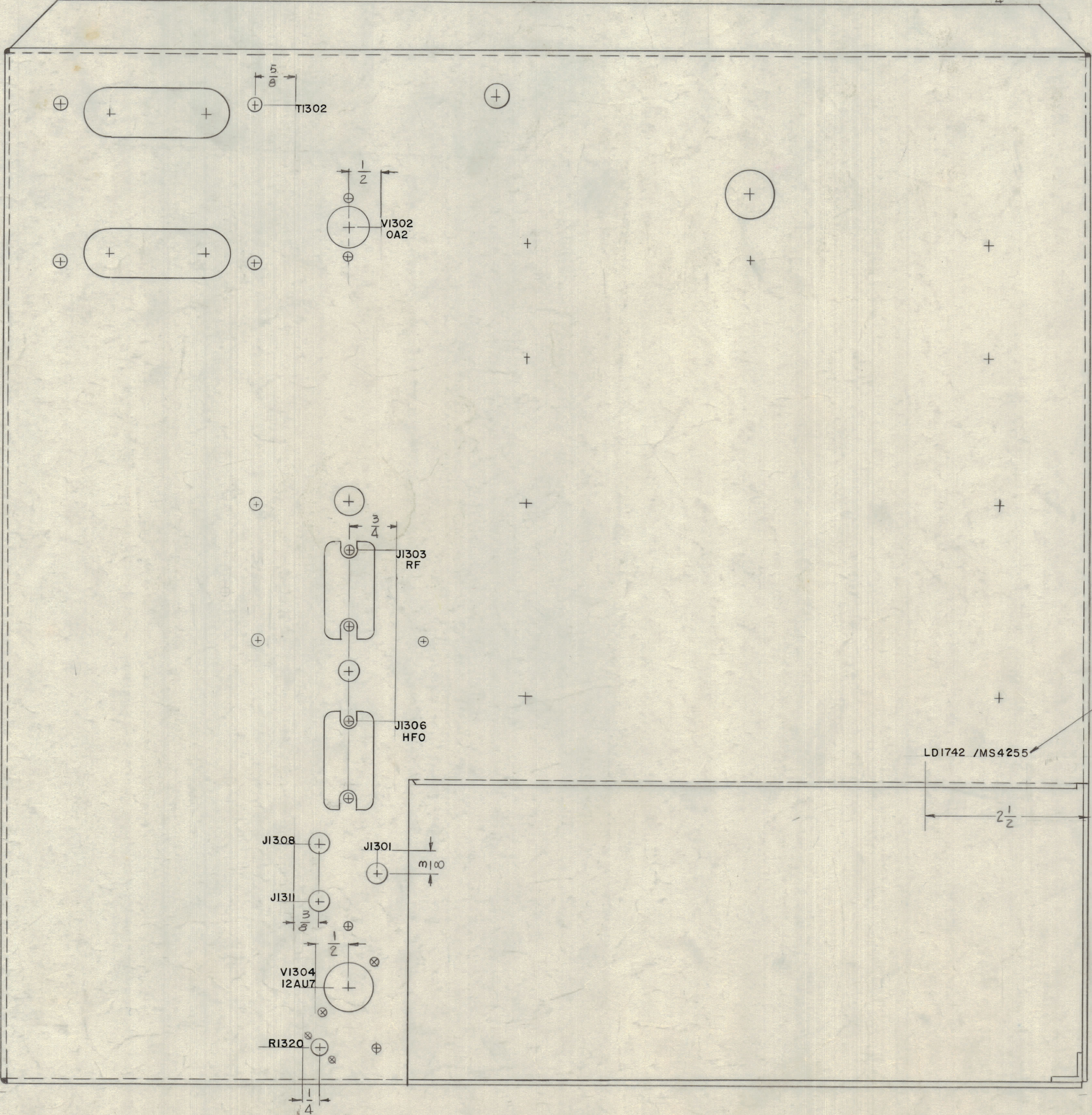
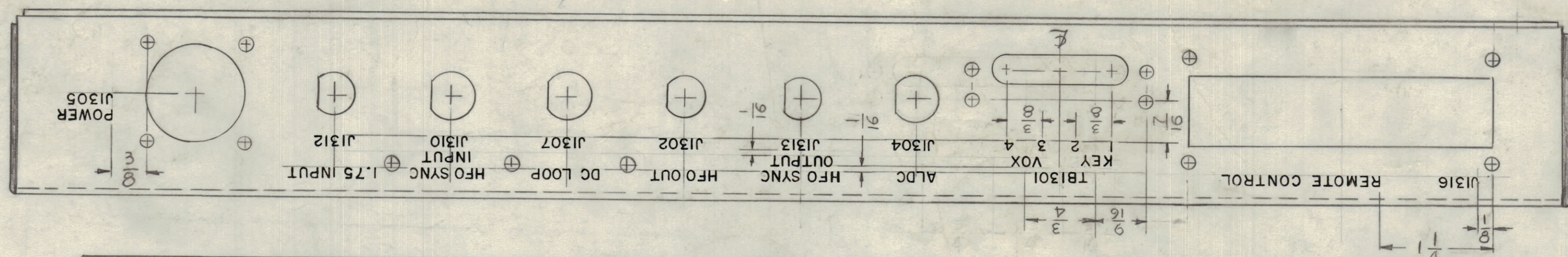


REVISIONS									
ZONE	SYM	DESCRIPTION	DATE	EM.N. NO.	DRAFT	CHKD	APPD		
X		EXPER. RELEASE	1-15-65		G.D.L.				
X1		ON SIDE VIEW "KEY, VOX, ALDC" RELOCATED & T1304 ADDED	2-1-65		G.D.L.				
X2		ON SIDE VIEW "T1301 & 1,2,3,4" ADDED - "KEY & VOX" RELOCATED	2-11-65		G.D.L.				
X3		ON PICTORIAL ONE HOLE ADDED	3-25-65		G.D.L.				
C-9		ORIGINAL RELEASE	3-25-65		G.D.L.				
D-9-9	A	SEE SHEET 2 OF 2	11/1/65	14916	H.V.V.				



MARKING PROCESS: AS PER TMC SPECIFICATION S-727.
 LETTERING: 1/8 HIGH BLACK GOTHIC, LOCATED AS SHOWN.
 1/16 SPACING BETWEEN ALL LETTER GROUPS

MARK TMC P/No WITH LATEST REV. LETTERS

LD1742 /MS4255

2 1/2

REF: MS 4255

REQ'D	ITEM	PART NUMBER	DESCRIPTION	SYMBOL
J. ANGER LIST OF MATERIAL				
MATERIAL THE TECHNICAL MATERIEL CORP. MAMARONECK, NEW YORK				
FINISH TITLE MARKING, CHASSIS ELECT. MAIN (TOP) MARKING PROCESS: PER TMC SPEC S 727				
QTY./UNIT		MODEL USED ON	ASS'Y. NO.	
SCALE 1:1		CODE A		
UNLESS OTHERWISE SPECIFIED DIMENSIONS ARE IN INCHES AND INCLUDE CHEMICALLY APPLIED OR PLATED FINISHES		DRAWN G.D.L.	DATE 1-15-65	FINAL APPROVAL
DECIMALS .XX ± .05 .XXX ± .005		CHECKED	DATE 3/26/65	
FRACTIONS ± 1/64 ANGLES ± 0° 30'		ELECT. DES. J. Anger	DATE 3/26/65	
MECH. DES.				
SHEET 1 OF 2				REV. LTR. A

NOTES

THE CONTENTS OF THIS DRAWING ARE THE EXCLUSIVE PROPERTY OF THE TECHNICAL MATERIEL CORP. ITS UNAUTHORIZED USE OR REPRODUCTION IN WHOLE OR IN PART IS STRICTLY FORBIDDEN.

LD1742 A

