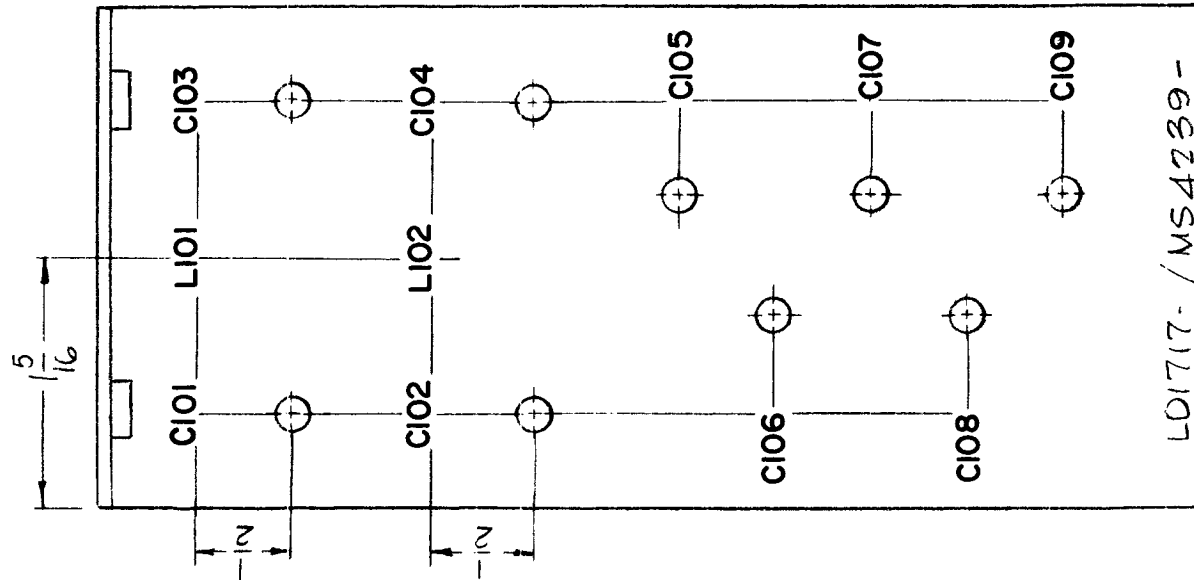


REQ. PER UNIT 1	USED ON			LD1717	Ø
	MODEL TER-25K	ASS'Y. NO.	DATE 12-22-64		



MARKING PROCESS: AS PER TMC SPECIFICATION S-727.

LETTERING: 1/8 HIGH BLACK GOTHIC, LOCATED AS SHOWN.

REF: MS4239

REQ.	ITEM	PART NO.	L. BUTLER DESCRIPTION				SYMBOL
			THE TECHNICAL MATERIEL CORP. MAMARONECK, NEW YORK				
			MARKING, BRACKET, MTG CAPACITOR				
			MARKING PROCESS: AS PER TMC SPEC S-727				
Ø	ORIGINAL RELEASE FOR PRODUCTION	12-22-64	X	SRG			
SYM	DESCRIPTION	DATE	CH. NO.	DRAFTS	CHECKER	ENG. APP.	
UNLESS OTHERWISE SPECIFIED DIMENSIONS ARE IN INCHES AND INCLUDE CHEMICALLY APPLIED OR PLATED FINISHES		SCALE	1:1				
TOLERANCES		CODE	A				
DECIMALS .X ± .05 .XX ± .01 .XXX ± .005		FRACTIONS ± 1/64 ANGLES ± 0° 30'					
		TYPE & TEMPER	HEAT TREAT. SPEC.	DRAWN	CHECKED	FINAL APPROVAL	
		FINISH & SPEC. NO.		ELEC. DES. APP.	MECH. DES. APP.	LD1717 Ø	