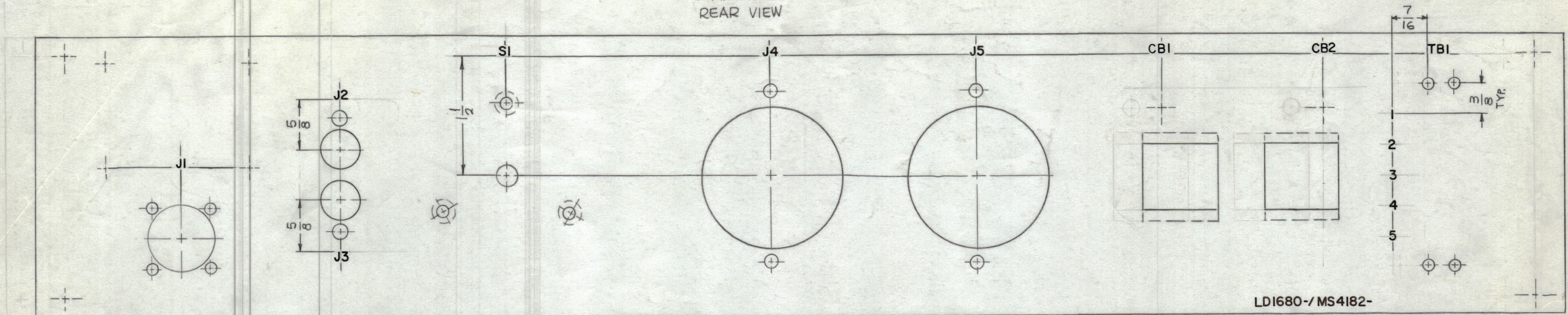


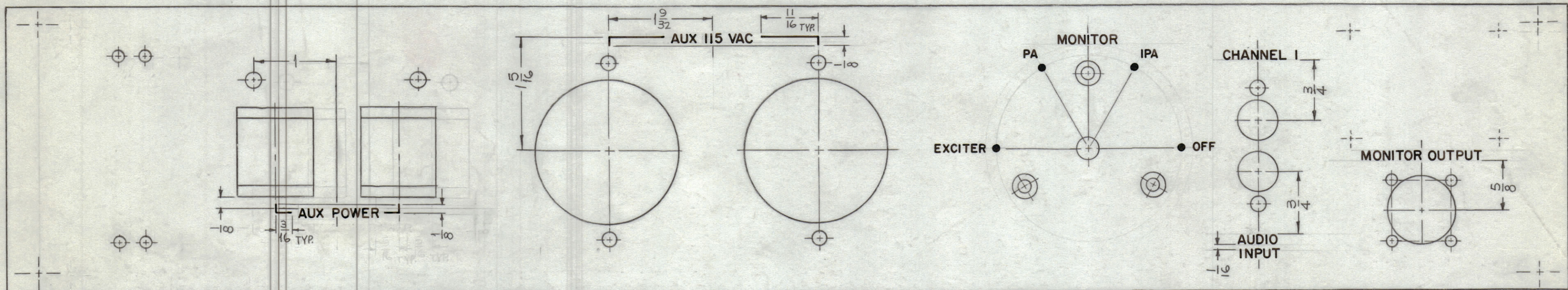
MARKING PROCESS: AS PER TMC SPECIFICATION S-727.
 LETTERING: 1/8 HIGH BLACK GOTHIC, LOCATED AS SHOWN.

REVISIONS							
ZONE	SYM	DESCRIPTION	DATE	E.M.N. NO.	DRAFT	CHKD	APPD
	X	EXP. RELEASE	12-16-64	X	SRG		
	X ₁	AUX POWER WAS 20AMPS AUX. POWER	12-22-64	X ₁	SPC		
	Ø	ORIGINAL RELEASE FOR PRODUCTION	1-4-65	Ø	R.P.		
	A	REAR VIEW: CB1 WAS S2; CB2 WAS S3.	1-15-65	13288	RT	@	DR

MARKING
REAR VIEW



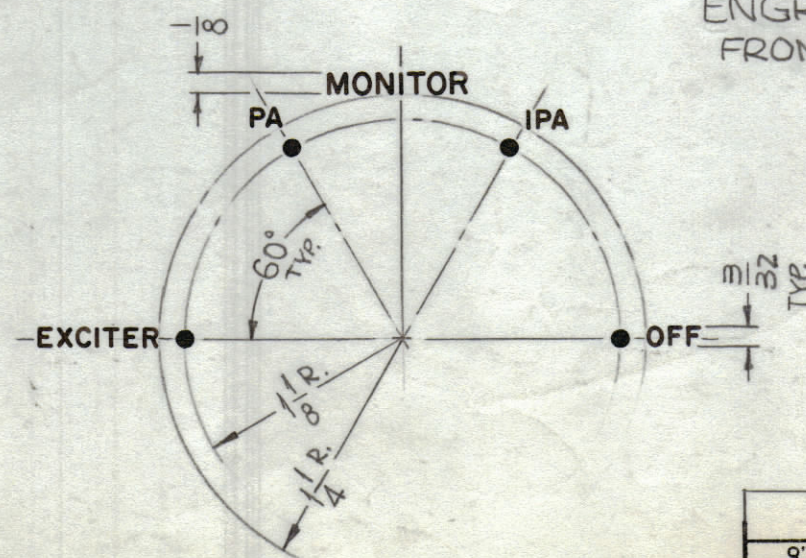
MARK TMC PART NO.
1/8 HIGH GOTHIC W/LATEST
REV. LETTER.



ENGRAVING
FRONT VIEW

HEIGHT OF LETTERS	DEPTH OF STROKE	WIDTH OF STROKE
1/8	.010	.020
3/32	.010	.015
DOTS	.010	1/16 DIA.
LINES	.010	.015

UNLESS OTHERWISE SPECIFIED:
 1~ LETTERING TO BE WHITE, 1/8 HIGH GOTHIC.
 2~ ALL DOTS & LINES TO BE WHITE FILLED.
 3~ ALL LETTER GROUPS TO BE CENTERED
 ON HOLES OR CUTOUTS.



NOTES

APP-10		
Q'TY./UNIT	MODEL USED ON	ASS'Y. NO.
SCALE 1:1	CODE A	
THE CONTENTS OF THIS DRAWING ARE THE EXCLUSIVE PROPERTY OF THE TECHNICAL MATERIEL CORP. ITS UNAUTHORIZED USE OR REPRODUCTION IN WHOLE OR IN PART IS STRICTLY FORBIDDEN.		

REF: MS 4182

REQ'D.	ITEM	PART NUMBER	DESCRIPTION	SYMBOL
L. BUTLER LIST OF MATERIAL				
MATERIAL		THE TECHNICAL MATERIEL CORP. MAMARONECK, NEW YORK		
FINISH		TITLE MARKING, PANEL, FRONT MARKING PROCESS: ENGRAVING		
UNLESS OTHERWISE SPECIFIED DIMENSIONS ARE IN INCHES AND INCLUDE CHEMICALLY APPLIED OR PLATED FINISHES		DRAWN SRC	DATE 12-16-64	FINAL APPROVAL
DECIMALS .X ± .05 .XX ± .01 .XXX ± .005		CHECKED J.B.	DATE 12-29-64	DATE
FRACTIONS ± 1/64 ANGLES ± 0° 30'		ELECT. DES. J.B.	DATE 12-30-64	LD1680
		MECH. DES. J.B.	DATE 12-29-64	A
			SHEET	REV. LTR.

LD1680
A