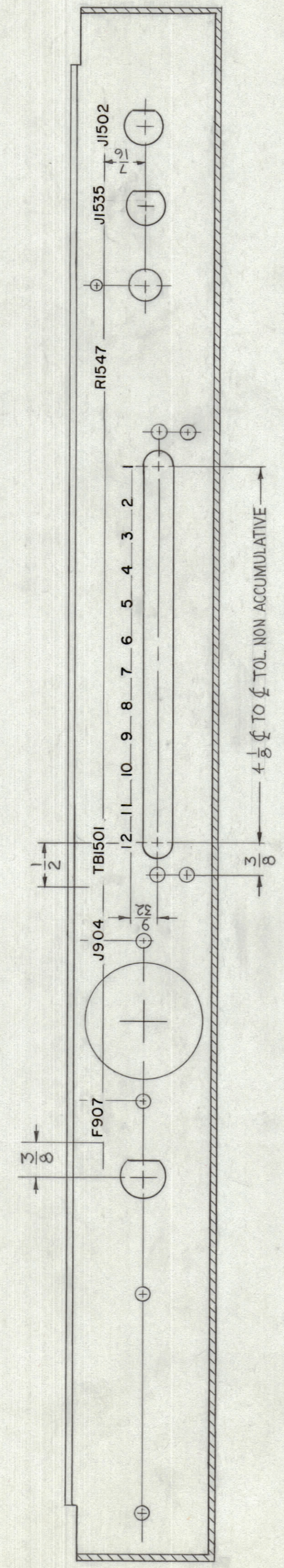
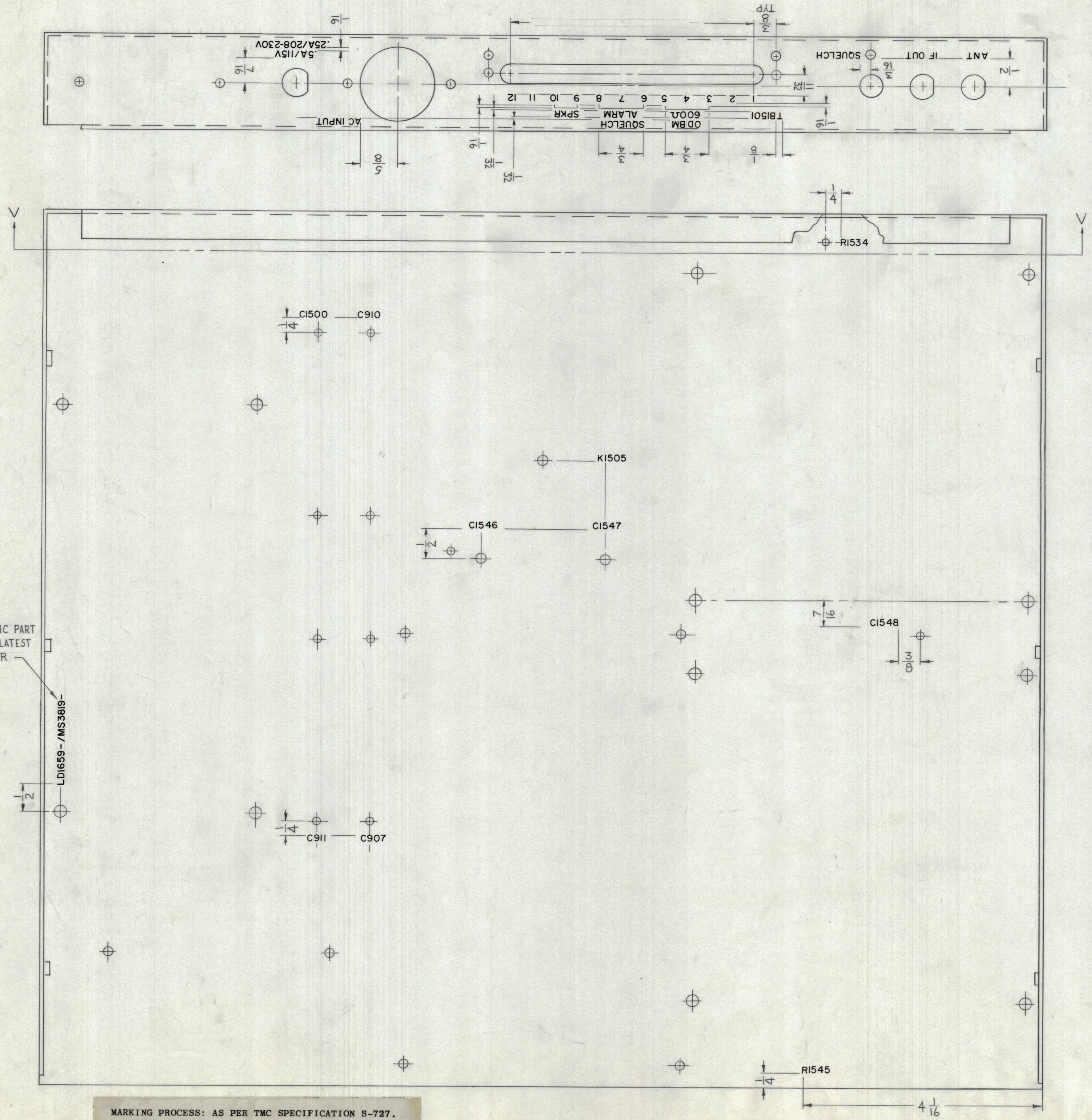


REVISIONS						
ZONE	SYM	DESCRIPTION	DATE	E.M.N. NO.	DRAFT	CHKD
X		EXPERIMENTAL RELEASE	11-9-64	X		



MARK TMC PART NO. WITH LATEST REV. LETTER

LD1659-MS3819

MARKING PROCESS: AS PER TMC SPECIFICATION S-727.
 LETTERING: 1/8 HIGH BLACK GOTHIC, LOCATED AS SHOWN.

NO LONGER USED
 SEE LD1542
 11-12-64 *24*

SECTION V-V

QTY./UNIT	STR-2	MODEL USED ON	ASS'Y. NO.
SCALE	1" = 1"	CODE	A

REF: TMC DWG M53819			
REQ'D.	ITEM	PART NUMBER	DESCRIPTION
LIST OF MATERIAL			
MATERIAL		THE TECHNICAL MATERIEL CORP. MAMARONECK, NEW YORK	
FINISH		TITLE MARKING, MAIN CHASSIS MARKING METHOD: AS PER TMC SPEC S727	
UNLESS OTHERWISE SPECIFIED DIMENSIONS ARE IN INCHES AND INCLUDE CHEMICALLY APPLIED OR PLATED FINISHES	DRAWN <i>9. Jovan</i>	DATE 11-9-64	FINAL APPROVAL
DECIMALS	XX ± .05	FRACTIONS	XX ± .005
TOLERANCES	± 1/64	ANGLES	± 0° 30'
ELECT. DES.	<i>M. K. [Signature]</i>	DATE	11-12-64
MECH. DES.		DATE	
SHEET			REV. LTR.
LD1659			X

NOTES

LD1659 X