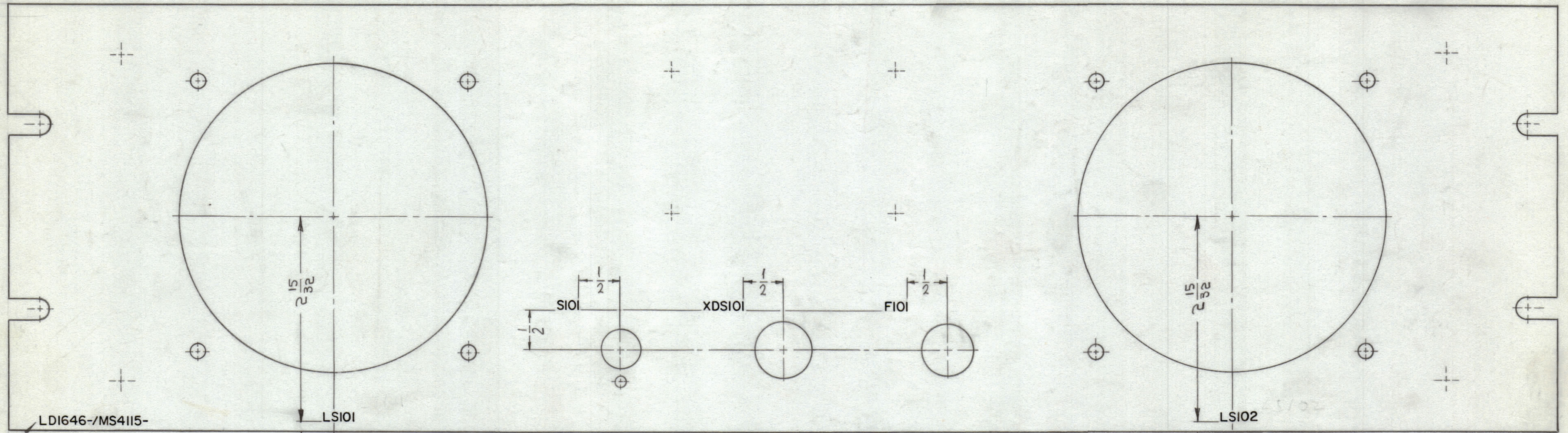


MARKING PROCESS: AS PER TMC SPECIFICATION S-727.
 LETTERING: 1/8 HIGH BLACK GOTHIC, LOCATED AS SHOWN.
 LETTERING: 1/8 HIGH WHITE GOTHIC, LOCATED AS SHOWN.

REVISIONS						
ZONE	SYM	DESCRIPTION	DATE	E.M.N. NO.	DRAFT	CHKD APPD
	X	EXPERIMENTAL RELEASE	11-2-64	X	SRG	
	X ₁	LS101 WAS LS1; LS102 WAS LS2	11-9-64	X ₁	SR	
B5	X ₂	ENGRAVING; AC LINE WAS 1 AMP	11-12-64	X ₂	SR	
	Ø	ORIGINAL RELEASE FOR PRODUCTION	8-23-64	H	E	

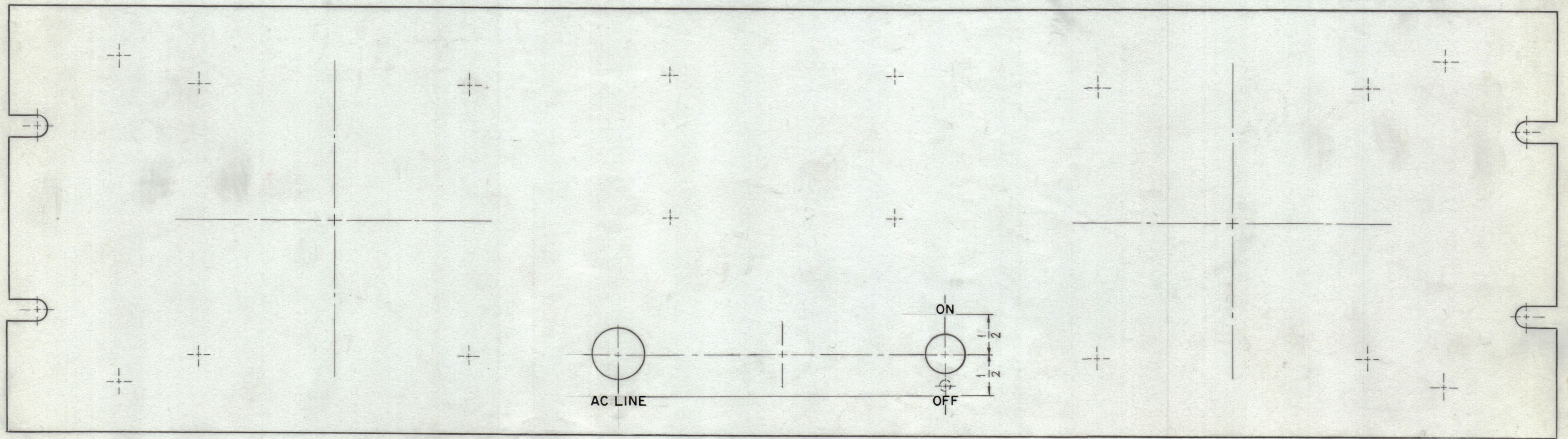
REAR VIEW

TOP



MARK TMC PART NO. W/LATEST REV. LETTER.

TOP



FRONT VIEW

HEIGHT OF LETTERS	DEPTH OF STROKE	WIDTH OF STROKE
1/8	.010	.020

- ALL ENGRAVING TO BE CENTERED ON HOLES.
- ENGRAVING TO BE GOTHIC WHITE FILLED SIZE SHOWN ON CHART.

NOTES

Q'TY./UNIT	MODEL USED ON	ASS'Y. NO.
1	LSP-6X	
SCALE 1:1	CODE A	

THE CONTENTS OF THIS DRAWING ARE THE EXCLUSIVE PROPERTY OF THE TECHNICAL MATERIEL CORP. ITS UNAUTHORIZED USE OR REPRODUCTION IN WHOLE OR IN PART IS STRICTLY FORBIDDEN.

REF. MS 4115-

REQ'D.	ITEM	PART NUMBER	DESCRIPTION	SYMBOL
M. STURMER LIST OF MATERIAL				
MATERIAL		THE TECHNICAL MATERIEL CORP. MAMARONECK, NEW YORK		
FINISH		TITLE MARKING, FRONT PANEL MARKING PROCESS: ENGRAVING		
DRAWN		DATE	FINAL APPROVAL	
CHECKED		DATE	DATE	
ELECT. DES.		DATE	DATE	
MECH. DES.		DATE	DATE	
DECIMALS		FRACTIONS		
.X ± .05		± 1/64		
.XX ± .01		ANGLES		
.XXX ± .005		± 0° 30'		
TOLERANCES		SHEET		
		REV. LTR.		

LDI646