

7

6

5

4

3

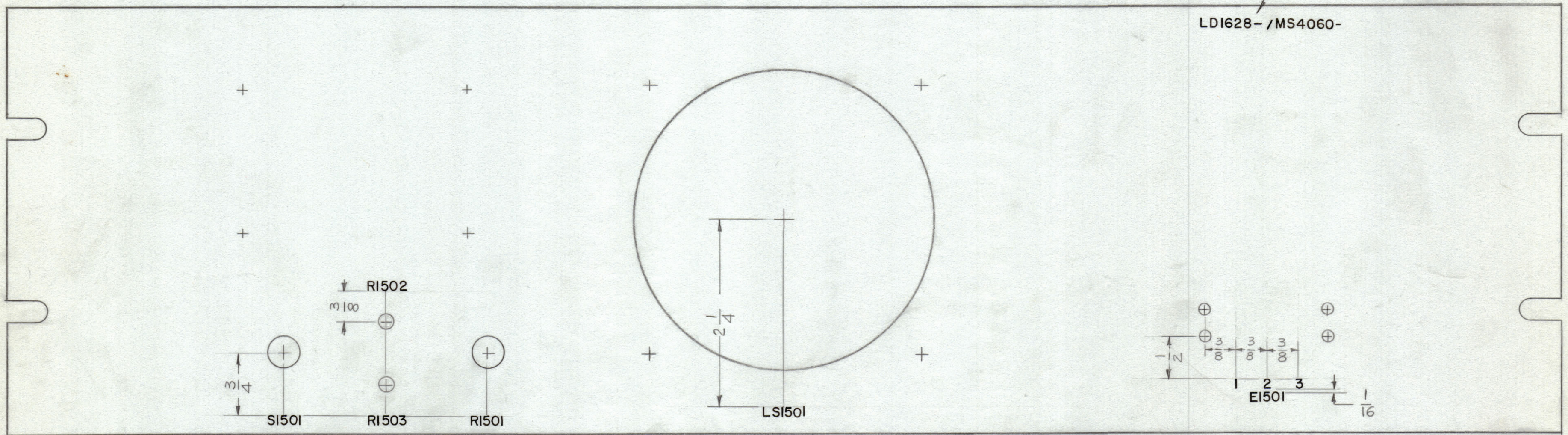
2

1

REVISIONS						
ZONE	SYM	DESCRIPTION	DATE	E.M.N. NO.	DRAFT	CHKD
		EXPERIMENTAL RELEASE	10-13-64		G.D.L.	
-	Ø	ORIGINAL RELEASE FOR PRODUCTION	10-14-64		JTB	

MARK TMC P/No WITH
LATEST REVISION LETTER

LD1628- /MS4060-



LD-1628
Ø

MARKING PROCESS: AS PER TMC SPECIFICATION S-727.
LETTERING: 1/8 HIGH BLACK GOTHIC, LOCATED AS SHOWN.

REF: MS4060

REQ'D.	ITEM	PART NUMBER	DESCRIPTION	SYMBOL
LIST OF MATERIAL				
MATERIAL		THE TECHNICAL MATERIEL CORP. MAMARONECK, NEW YORK		
FINISH		TITLE MARKING, PANEL FRONT MARKING PROCESS: AS PER TMC SPEC. 5727		
UNLESS OTHERWISE SPECIFIED DIMENSIONS ARE IN INCHES AND INCLUDE CHEMICALLY APPLIED OR PLATED FINISHES		DRAWN G.D.L.	DATE 10-13-64	FINAL APPROVAL [Signature]
DECIMALS .X ± .05 .XX ± .01 .XXX ± .005		CHECKED @	DATE 10-13-64	DATE 10/14/64
FRACTIONS ± 1/64 ANGLES ± 0° 30'		ELECT. DES. [Signature]	DATE 10/14/64	DATE 10/14/64
TOLERANCES		MECH. DES. [Signature]	DATE 10/14/64	DATE 10/14/64
THE CONTENTS OF THIS DRAWING ARE THE EXCLUSIVE PROPERTY OF THE TECHNICAL MATERIEL CORP. ITS UNAUTHORIZED USE OR REPRODUCTION IN WHOLE OR IN PART IS STRICTLY FORBIDDEN.		LD1628		
SCALE 1:1		SHEET 2 OF 2		

NOTES

7

6

5

4

3

2

1