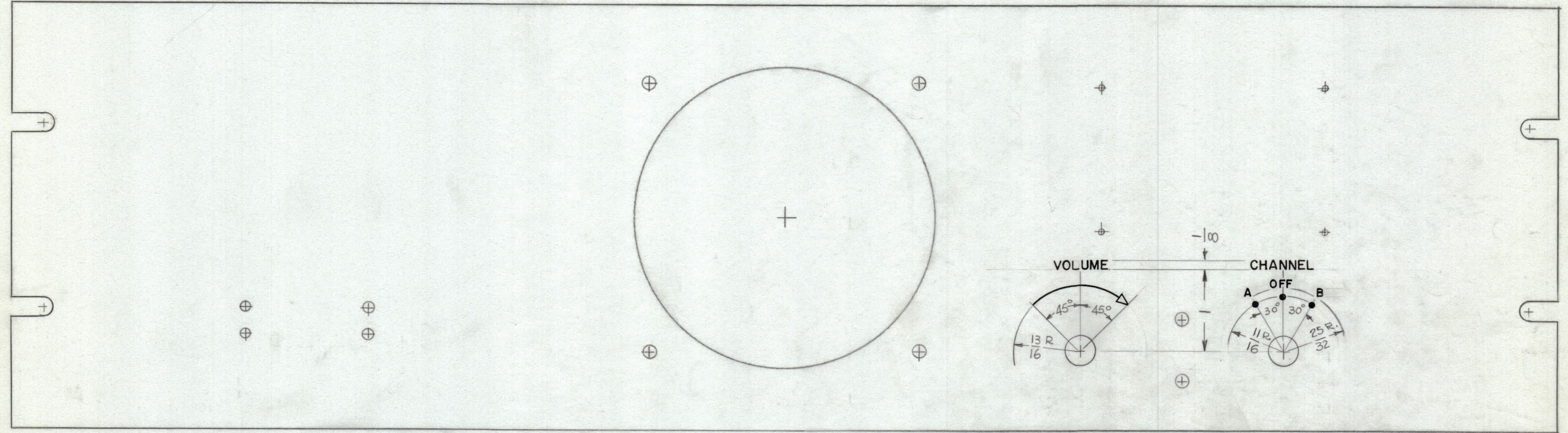
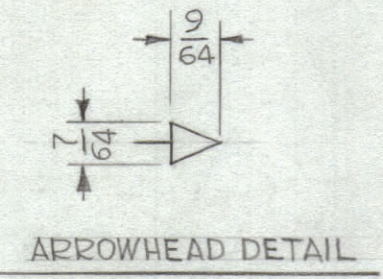


REVISIONS							
ZONE	SYM	DESCRIPTION	DATE	E.M.N. NO.	DRAFT	CHKD	APPD
X		EXPERIMENTAL RELEASE	10-12-64		G.D.L		
Ø		ORIGINAL RELEASE FOR PRODUCTION	10-14-64		J.B		



HEIGHT OF LETTERS	DEPTH OF STROKE	WIDTH OF STROKE
$3/32$.010	.015
$1/8$.010	.020
DOTS	.010	$1/16$ DIA
LINES	.010	.015
ARROWHEADS	.010	



- UNLESS OTHERWISE SPECIFIED —
- 1- ALL DOTS TO BE WHITE FILLED
 - 2- ALL LETTERING TO BE WHITE FILLED
 - 3- ALL LINES TO BE WHITE FILLED
 - 4- ALL ARROWHEADS TO BE WHITE OUTLINE FILL
 - 5- ALL LETTER GROUPS TO BE CENTERED ON HOLES
 - 6- ENGRAVING TO BE GOTHIC WHITE FILLED SIZE SHOWN ON CHART

REF: MS 4060

REQ'D.	ITEM	PART NUMBER	DESCRIPTION	SYMBOL
LIST OF MATERIAL				
MATERIAL		THE TECHNICAL MATERIEL CORP. MAMARONECK, NEW YORK		
FINISH		TITLE MARKING, PANEL FRONT MARKING METHOD ENGRAVING		
UNLESS OTHERWISE SPECIFIED DIMENSIONS ARE IN INCHES AND INCLUDE CHEMICALLY APPLIED OR PLATED FINISHES		DRAWN G.D.L	DATE 10-13-64	FINAL APPROVAL RAC
DECIMALS .X ± .05 .XX ± .01 .XXX ± .005		CHECKED @	DATE 10-13-64	DATE 10-14-64
FRACTIONS ± 1/64 ANGLES ± 0° 30'		ELECT. DES. NMA	DATE 10-14-64	DATE
TOLERANCES		MECH. DES.	DATE	DATE
THE CONTENTS OF THIS DRAWING ARE THE EXCLUSIVE PROPERTY OF THE TECHNICAL MATERIEL CORP. ITS UNAUTHORIZED USE OR REPRODUCTION IN WHOLE OR IN PART IS STRICTLY FORBIDDEN.		SHEET 1 OF 2		REV. LTR. Ø

NOTES

LD 1628 Ø