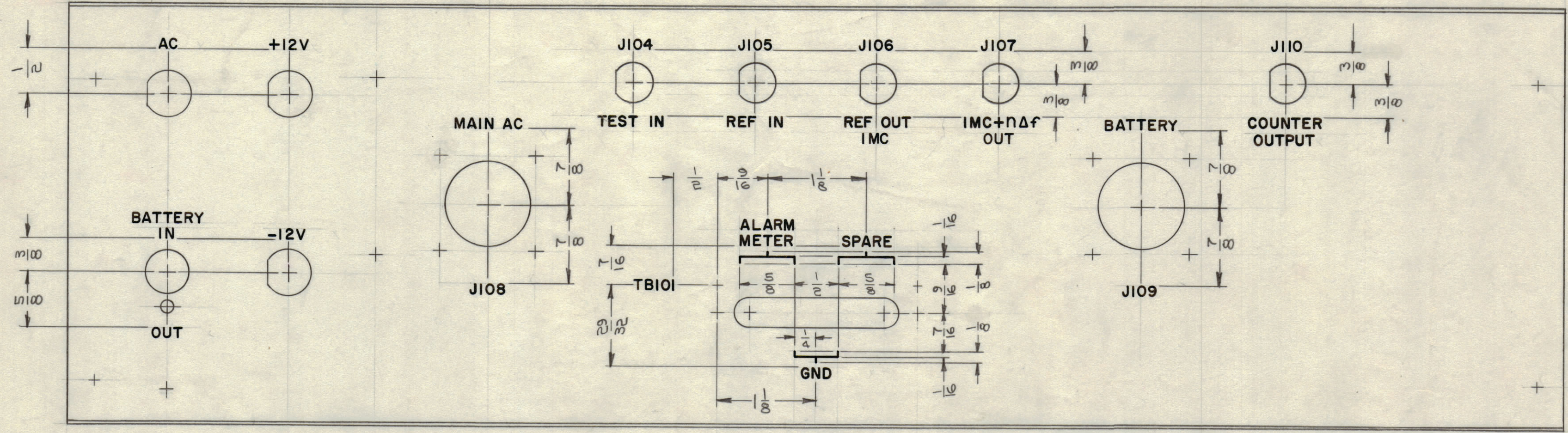
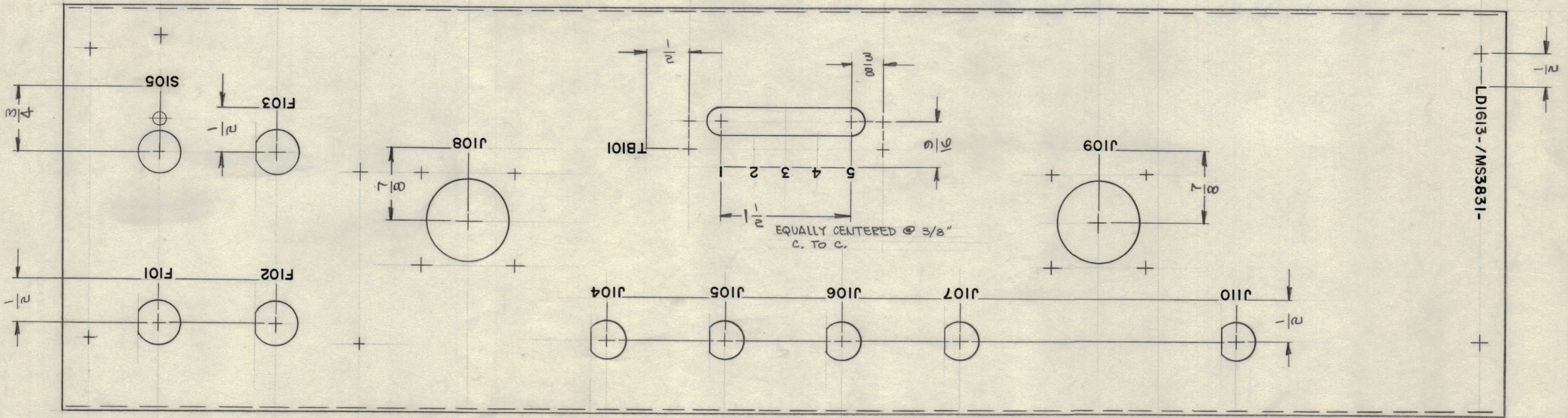


REVISIONS						
ZONE	SYM	DESCRIPTION	DATE	E.M.N. NO.	DRAFT	CHKD
#	X	EXPER. RELEASE	10-12-64	X		
	Ø	ORIGINAL RELEASE FOR PRODUCTION	10-20-64	Ø		
D5,F5	A	TB101 WAS E101 (2 PLACES)	10-27-64	12789	JTB	
E6	B	"K" HOLE ADDED. PER MS3831-B	1-7-65	13255	RZ	

FRONT VIEW
TOP



REAR VIEW
TOP



MARKING PROCESS: AS PER TMC SPECIFICATION S-727.
 LETTERING: 1/8 HIGH BLACK GOTHIC, LOCATED AS SHOWN.
 1/16" SPACING BETWEEN ALL LETTER GROUPS.
 MARK TMC PART NO. WITH LATEST REVISION LETTERS

NOTES

1	PFCB-1	A3880
QTY/UNIT	MODEL USED ON	ASSY. NO.
SCALE	CODE	
1:1	A	

THE CONTENTS OF THIS DRAWING ARE THE EXCLUSIVE PROPERTY OF THE TECHNICAL MATERIEL CORP. ITS UNAUTHORIZED USE OR REPRODUCTION IN WHOLE OR IN PART IS STRICTLY FORBIDDEN.

REF: MS3831(2)

REQ'D.	ITEM	PART NUMBER	DESCRIPTION	SYMBOL
GELLMAN LIST OF MATERIAL				
MATERIAL		THE TECHNICAL MATERIEL CORP. MAMARONECK, NEW YORK		
FINISH		TITLE MARKING, PLATE, REAR MARKING PROCESS: PER TMC SPEC 5727		
UNLESS OTHERWISE SPECIFIED DIMENSIONS ARE IN INCHES AND INCLUDE CHEMICALLY APPLIED OR PLATED FINISHES		DRAWN	DATE	FINAL APPROVAL
DECIMALS .X ± .05 .XX ± .01 .XXX ± .005		CHECKED	DATE	DATE
FRACTIONS ± 1/64 ANGLES ± 0° 30'		ELECT. DES.	DATE	DATE
TOLERANCES		MECH. DES.	DATE	DATE
			10-20-64	
SHEET				REV. LTR.
LD1613				B

LD1613
B