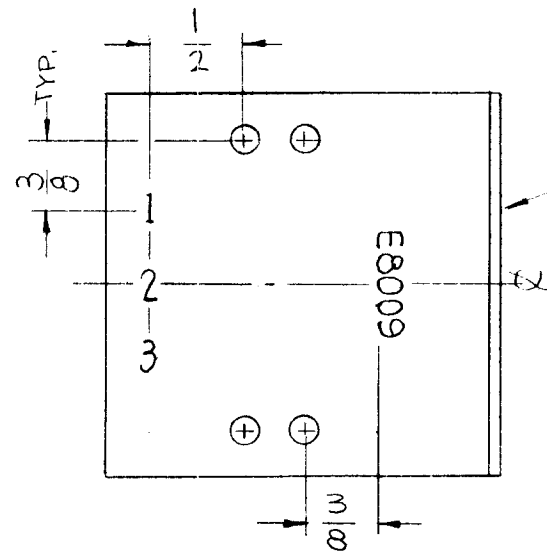


| REQ. PER UNIT | USED ON | | |
|---------------|-----------|------------|----------|
| | MODEL | ASS'Y. NO. | DATE |
| 1 | RAK-110-2 | BMA 153 | 11-17-66 |
| 1 | RAK-111-2 | BMA 153 | 11-17-66 |

LD1506 \emptyset



MARK TMC P/N (LD1506-)
 1/8 HIGH GOTHIC W/LATEST
 REV. LETTER.
 (ON SIDE OF BRACKET)

MARKING PROCESS: AS PER TMC SPECIFICATION S-727.
 LETTERING: 1/8 HIGH BLACK GOTHIC, LOCATED AS SHOWN.

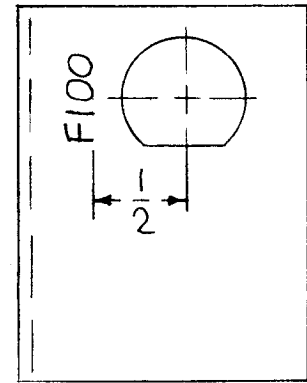
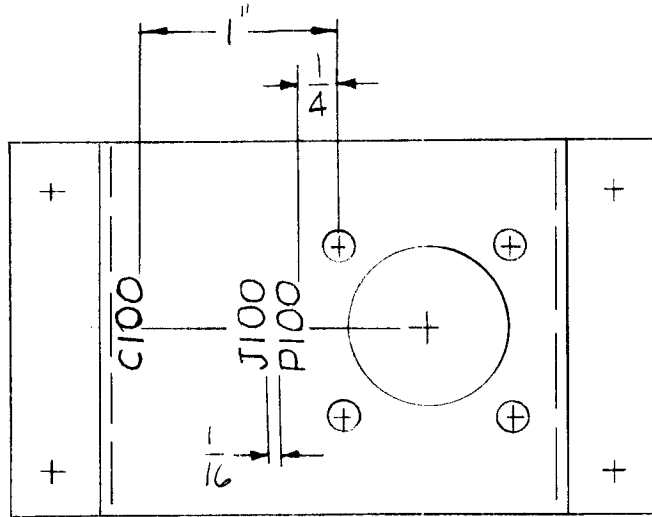
REF: MS 3766 -

| REQ. ITEM | PART NO. | F. BUDETTI DESCRIPTION | | SYMBOL |
|-----------|----------|--|-------------------|----------------|
| | | THE TECHNICAL MATERIEL CORP. MAMARONECK, NEW YORK | | |
| | | MARKING BRACKET TERM. BD. | | |
| | | MATERIAL | | |
| | | TYPE & TEMPER | HEAT TREAT. SPEC. | |
| | | DRAWN | CHECKED | FINAL APPROVAL |
| | | FINISH & SPEC. NO. | | |
| | | ELEC. DES. APP. | MECH. DES. APP. | |

| SYM | DESCRIPTION | DATE | CH. NO. | DRAFTS | CHECKER | ENG. APP. |
|-------------|---------------------------------|----------|---------|--------|---------|-----------|
| \emptyset | ORIGINAL RELEASE FOR PRODUCTION | 12.1.66 | | | | |
| X | EXP. RELEASE | 11-17-66 | | | | |

| DECIMALS | FRACTIONS | CODE |
|-----------------|--------------|------|
| .X \pm .05 | \pm 1/64 | A |
| .XX \pm .01 | ANGLES | |
| .XXX \pm .005 | \pm 0° 30' | |

| | | | | |
|---------------|---------|------------|---------|--------------------|
| REQ. PER UNIT | USED ON | | | LD1507 \emptyset |
| | MODEL | ASS'Y. NO. | DATE | |
| 1 | TRC-20K | | 11-7-66 | |



MARK TMC P/N
(LD1507-)
 $\frac{1}{8}$ HIGH GOTHIC
W/LATEST REV.
LETTER. (ON LIP)

MARKING PROCESS: AS PER TMC SPECIFICATION S-727.

LETTERING: 1/8 HIGH BLACK GOTHIC, LOCATED AS SHOWN.

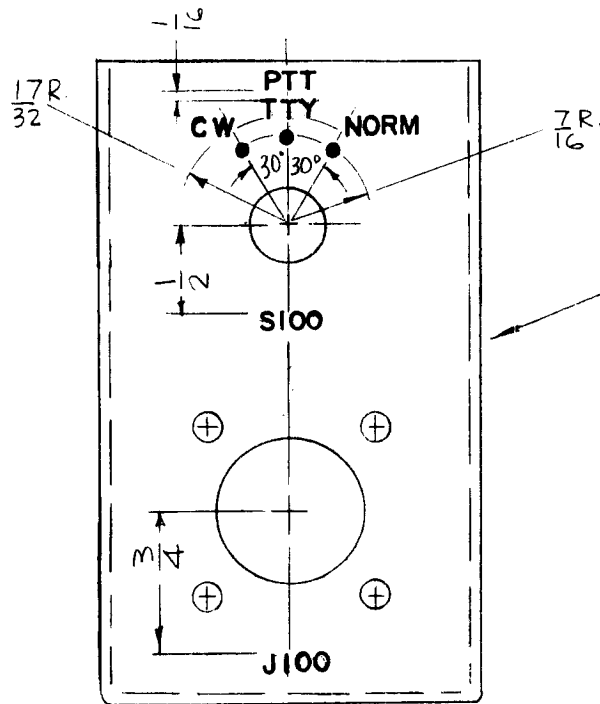
REF: MS1611-2

| SYM | DESCRIPTION | DATE | CH. NO. | DRAFTS | CHECKER | ENG. APP. | REQ. ITEM | PART NO. | F. BUDETTI DESCRIPTION | SYMBOL | |
|---|------------------|---|---------|------------|---------|-----------|---------------------------------|----------|---|-----------------|-------------------------------|
| \emptyset | ORIGINAL RELEASE | 7/15/64 | | W | | | | | THE TECHNICAL MATERIEL CORP. MAMARONECK, NEW YORK MARKING, BRKT, CAP, BOTTOM FAN AS PER TMC SPEC S-727 | | |
| X | EXP. RELEASE | 11-7-66 | | | | | | | | | |
| | | | | | | | | | | | |
| UNLESS OTHERWISE SPECIFIED DIMENSIONS ARE IN INCHES AND INCLUDE CHEMICALLY APPLIED OR PLATED FINISHES | | SCALE | | | | | MATERIAL | | | | |
| DECIMALS .X \pm .05 .XX \pm .01 .XXX \pm .005 | | FRACTIONS \pm 1/64 ANGLES \pm 0° 30' | | TOLERANCES | | CODE A | TYPE & TEMPER HEAT TREAT. SPEC. | | DRAWN A W | CHECKED A W | FINAL APPROVAL O B 7/15/69 |
| | | | | | | | FINISH & SPEC. NO. | | ELEC. DES. APP. | MECH. DES. APP. | LD1507 \emptyset |

| REQ. PER UNIT | USED ON | | |
|---------------|---------|------------|----------|
| | MODEL | ASS'Y. NO. | DATE |
| 1 | PS-4A | A 4548 | 11-18-66 |
| 1 | KIT-320 | A 4548 | 11-18-66 |

LD1509

Ø



MARK TMC P/N (LD1509-)
 1/8 HIGH GOTHIC
 W/LATEST REV.
 LETTER.

MARKING PROCESS: AS PER TMC SPECIFICATION S-727.
 DOTS: 1/16 DIA. BLACK
 LETTERING: 3/32 HIGH BLACK GOTHIC, LOCATED AS SHOWN.

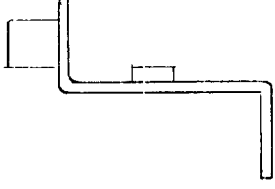
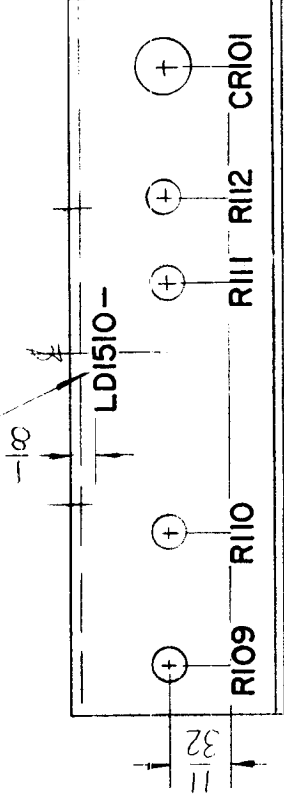
REF: MS3769-

| SYM | DESCRIPTION | DATE | CH. NO. | DRAFTS | CHECKER | ENG. APP. | REQ. ITEM | PART NO. | F. BUDETTI DESCRIPTION | SYMBOL | | |
|---|---------------------------------|------------|---------|---|---------|-----------|--------------------|------------|--|--|---------|----------------|
| Ø | ORIGINAL RELEASE FOR PRODUCTION | 3/23/67 | | RME | | | | | THE TECHNICAL MATERIEL CORP. MAMARONECK, NEW YORK | | | |
| XI | COMPLETELY REVISED | 1-11-67 | | | | | | STOCK SIZE | | | | |
| X | EXP. RELEASE | 11-18-66 | | | | | | MATERIAL | | MARKING, BRKT, MTG SWITCH AS PER TMC SPEC. S727 | | |
| UNLESS OTHERWISE SPECIFIED DIMENSIONS ARE IN INCHES AND INCLUDE CHEMICALLY APPLIED OR PLATED FINISHES | | SCALE | | 1:1 | | | TYPE & TEMPER | | HEAT TREAT. SPEC. | DRAWN | CHECKED | FINAL APPROVAL |
| DECIMALS .X ± .05 .XX ± .01 .XXX ± .005 | | TOLERANCES | | FRACTIONS ± 1/64 ANGLES ± 0° 30' | | CODE A | FINISH & SPEC. NO. | | ELEC. DES. APP. | MECH. DES. APP. | LD1509 | Ø |

MIL AA

| APPLICATION | | | REVISIONS | | | | | | |
|-------------|---------------|-----------|-----------|---------------------------------|---------|----------|-----------|------|-----------|
| QTY | MODFI USED ON | ASS'Y NO. | LTR | DESCRIPTION | DATE | E.M.N.NO | DRAFT | CHKD | APPD |
| 1 | KIT-320 | | X1 | COMPLETELY REVISED | 1-2-67 | | <i>Me</i> | | <i>RM</i> |
| 1 | PS-4B | | Ø | ORIGINAL RELEASE FOR PRODUCTION | 3/23/67 | | RME | | |

MARK TMC P/N
1/8 HIGH GOTHIC
W/LATEST REV.
LETTER



MARKING PROCESS: AS PER TMC SPECIFICATION S-727.

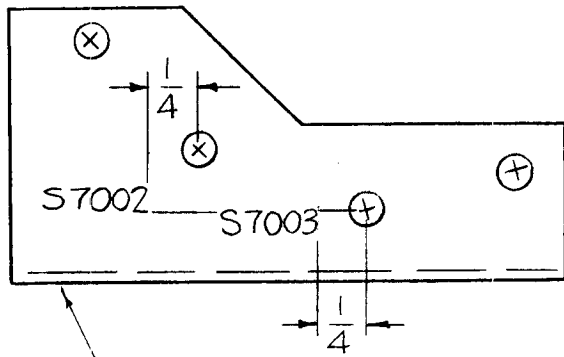
LETTERING: 1/8 HIGH BLACK GOTHIC, LOCATED AS SHOWN.

REF MS3771-

| REQ'D | ITEM | PART NUMBER | DESCRIPTION | SYM. | |
|--|------|-------------|---|--|---|
| F. BUDETTI LIST OF MATERIAL | | | | | |
| FIN. APPR. <i>[Signature]</i> MECH. DES. <i>[Signature]</i> | | | THE TECHNICAL MATERIEL CORP. MAMARONECK, NEW YORK | | |
| DATE <i>3/23/67</i> DATE | | | MARKING BRACKET MTG. RESISTORS AS PER TMC SPEC. S727 | ISSUE | |
| ELECT. DES. <i>[Signature]</i> CHECKED | | | | SIZE A CODE IDENT. NO. 82679 DWG NO. LD1510 | Ø |
| DRAWN <i>[Signature]</i> | | | | SCALE 1:1 SHEET 11 OF 11 | |

NOTICE TO PERSONS RECEIVING THIS DRAWING
 THE TECHNICAL MATERIEL CORPORATION claims proprietary right in the material disclosed hereon. This drawing is issued in confidence for engineering information only and may not be reproduced or used to manufacture anything shown hereon without permission from THE TECHNICAL MATERIEL CORPORATION to the user. This drawing is loaned for mutual assistance and is subject to recall at any time.

| | | | | | |
|---------------|---------|------------|----------|--------|---|
| REQ. PER UNIT | USED ON | | | LD1511 | ⊗ |
| | MODEL | ASS'Y. NO. | DATE | | |
| 1 | SWCA-3K | BMA 129 | 11-21-66 | | |



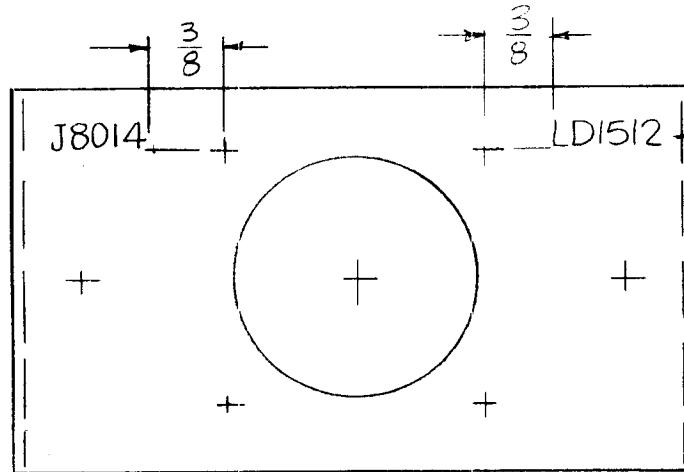
MARKING PROCESS: AS PER TMC SPECIFICATION S-727.
 LETTERING: 1/8 HIGH BLACK GOTHIC, LOCATED AS SHOWN.

MARK TMC P/N (LD1511)
 1/8 HIGH GOTHIC W/LATEST
 REV. LETTER.
 (ON BOTTOM)

REF MS 3774-

| REQ. ITEM | PART NO. | F. BUDETTI DESCRIPTION | | | SYMBOL |
|---|---------------------------------|--|-----------------|----------|---------|
| | | THE TECHNICAL MATERIEL CORP. MAMARONECK, NEW YORK | | | |
| Ø | ORIGINAL RELEASE FOR PRODUCTION | 12-16-66 | Ø | RME | |
| X | EXP. RELEASE | 11-21-66 | | | |
| SYM | DESCRIPTION | DATE | CH. NO. | DRAFTS | CHECKER |
| UNLESS OTHERWISE SPECIFIED DIMENSIONS ARE IN INCHES AND INCLUDE CHEMICALLY APPLIED OR PLATED FINISHES | | SCALE | 1:1 | | |
| DECIMALS .X ± .05 .XX ± .01 .XXX ± .005 | TOLERANCES | FRACTIONS ± 1/64 ANGLES ± 0° 30' | CODE A | | |
| FINISH & SPEC. NO. | | ELEC. DES. APP. | MECH. DES. APP. | LD1511 ⊗ | |

| | | | | | |
|---------------|-----------|-----------|---------|--------|---|
| REQ. PER UNIT | USED ON | | | LD1512 | ∅ |
| | MODEL | ASSY. NO. | DATE | | |
| 1 | RAK110-2G | | 12-8-66 | | |



MARK TMC P/N
1/8 HIGH GOTHIC
W/LATEST REV
LETTER.

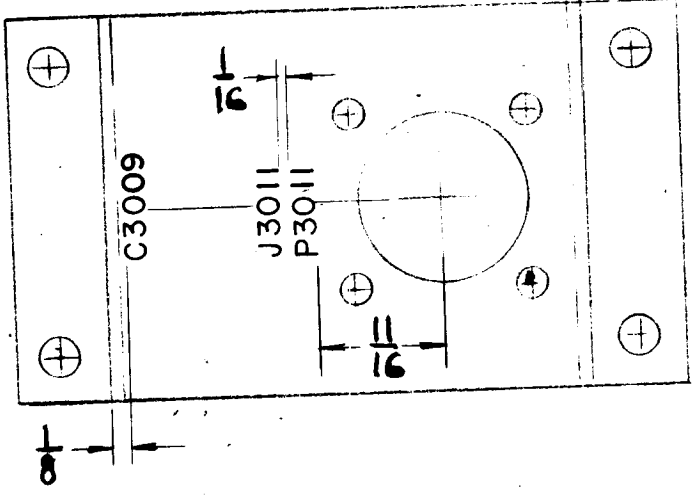
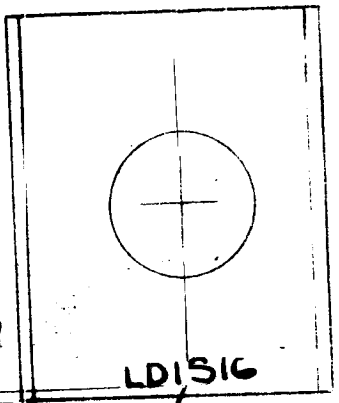
MARKING PROCESS: AS PER TMC SPECIFICATION S-727.

LETTERING: 1/8 HIGH BLACK GOTHIC, LOCATED AS SHOWN.

REF MS6042

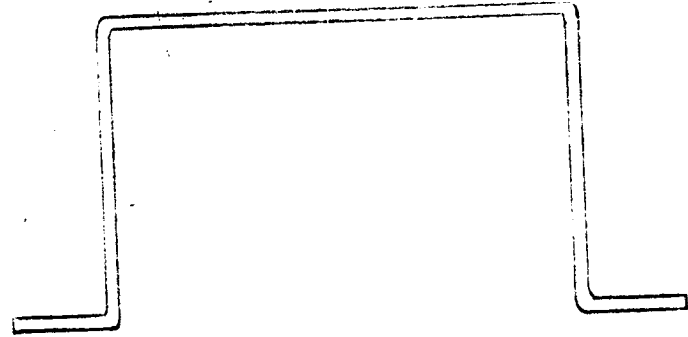
| ISSUE | ITEM | CHANGED FROM | DATE | CH. NO. | DRAFTS | CHECKER | ENG. APP. | REQ. ITEM | PART NO. | DESCRIPTION | SYMBOL | |
|---|------|---------------------------------|---------|---------|--------|---------|-----------|---|-------------------|--|---------|----------------|
| | | ORIGINAL RELEASE FOR PRODUCTION | 3/27/67 | | RME | | | | | F. BUDETTI | | |
| ∅ | | | | | | | | | | THE TECHNICAL MATERIEL CORP. MAMARONECK, NEW YORK | | |
| X | | EXP RELEASE | 12-8-66 | | | | | | | MARKING BRACKET MTG CONNECTOR | | |
| | | | | | | | | | | | | |
| TOLERANCES | | | | | | | | SCALE: 1:1 | | | | |
| DEC. DIM. ± FRAC. DIM. ± ANGULAR DIM. ± | | | | | | | | MAXIMUM ALLOWABLE TOLERANCES HAVE BEEN DETERMINED AND ANY DEVIATIONS WILL BE CAUSE FOR REJECTION. REMOVE ALL BURRS AND SHARP EDGES | | | | |
| | | | | | | | | TYPE & TEMPER | HEAT TREAT. SPEC. | DRAWN | CHECKED | FINAL APPR VAL |
| | | | | | | | | S401-451 S401- | S401- | | | |
| | | | | | | | | FINISH & SPEC. NO. | ELEC. DES. APP. | MECH. DES. APP. | | |
| | | | | | | | | | | | | LD1512 ∅ |

| | | | | |
|---------------|---------------|-----------|----------|--------|
| REQ. PER UNIT | MODEL | ASSY. NO. | DATE | LD1516 |
| 1 | CPT-1000/AX65 | | 12-29-66 | |



MARKING PROCESS:
AS PER TMC SPEC S-727.
ALL LETTERING, 1/8 HIGH
BLACK GOTHIC.

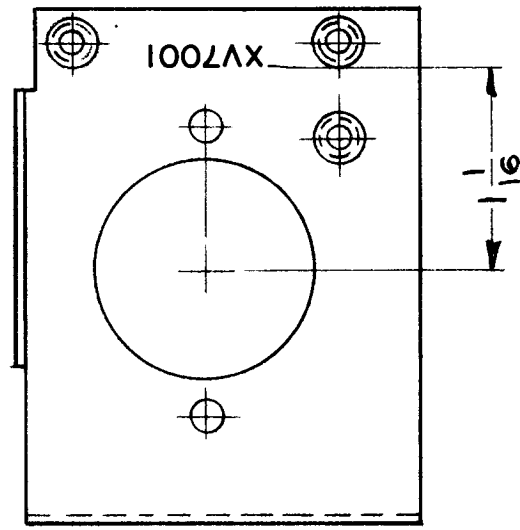
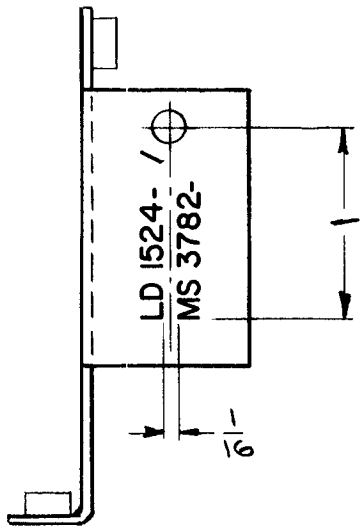
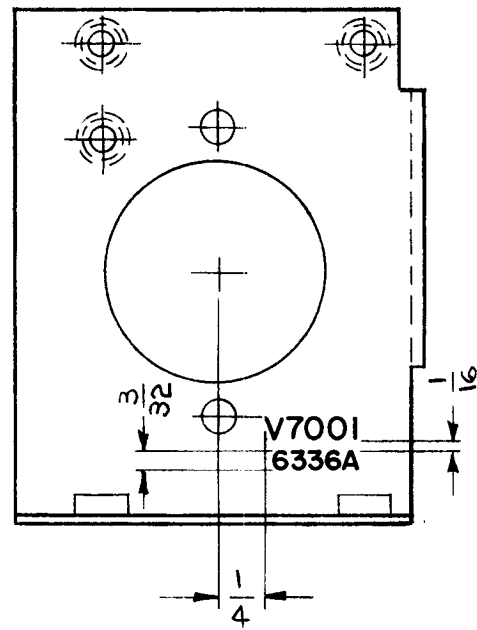
MARK TMC P/N
1/8 HIGH GOTHIC
LATEST REV.
LETTER



REF MS 1611

| | | | | REQ. ITEM | PART NO. | F. BUDETTI | DESCRIPTION | SYMBOL |
|----------------|------|--------------------------------|--|------------------|-------------------|--|-------------|----------------|
| | | | | | | THE TECHNICAL MATERIEL CORP. MAMARONECK, NEW YORK | | |
| | | | | | STOCK SIZE | MARKING, BRKT CAPACITOR, TOP FAN | | |
| | | | | | MATERIAL | AS PER TMC SPEC. S727 | | |
| ISSUE | ITEM | CHANGED FROM | DATE | CH. NO. | DRAFTS | CHECKER | ENG. APP. | |
| φ | X | ORIGINAL RELEASE PRODUCTION | 3-1-67 | | L.A.K. | | | |
| | | EXP. RELEASE | 12-29-66 | | | | | |
| TOLERANCES | | | SCALE: FULL | | | | | |
| DEC. DIM. ± | | | MAXIMUM ALLOWABLE TOLERANCES HAVE BEEN DETERMINED AND ANY DEVIATIONS WILL BE CAUSE FOR REJECTION. REMOVE ALL BURRS AND SHARP EDGES | | | | | |
| FRAC. DIM. ± | | | | | | | | |
| ANGULAR DIM. ± | | | | | | | | |
| | | | | TYPE & TEMPER | HEAT TREAT. SPEC. | DRAWN | CHECKED | FINAL APPROVAL |
| | | | | FINISH & SPEC. N | | | | |
| | | | | ELEC. DES. APP | | MECH. DES. APP | | |
| | | | | | | LD1516 | | φ |

| | | | | |
|---------------|---------|------------|---------|---------------------|
| REQ. PER UNIT | USED ON | | | LD 1524 \emptyset |
| | MODEL | ASS'Y. NO. | DATE | |
| 1 | SBS-7 | A2885 | 4-22-64 | |

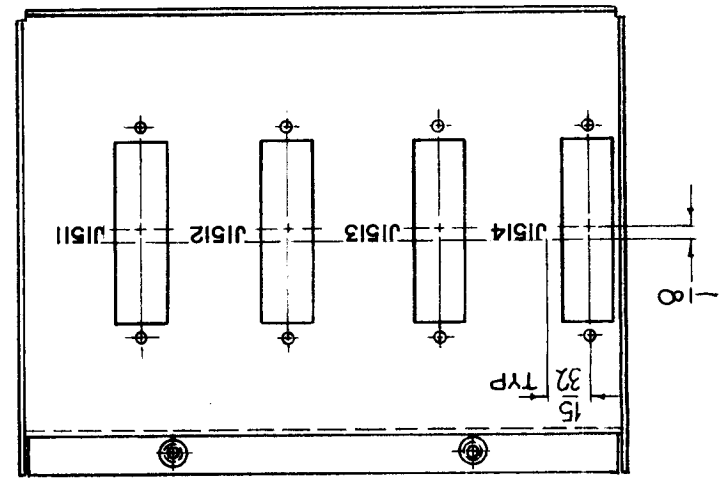
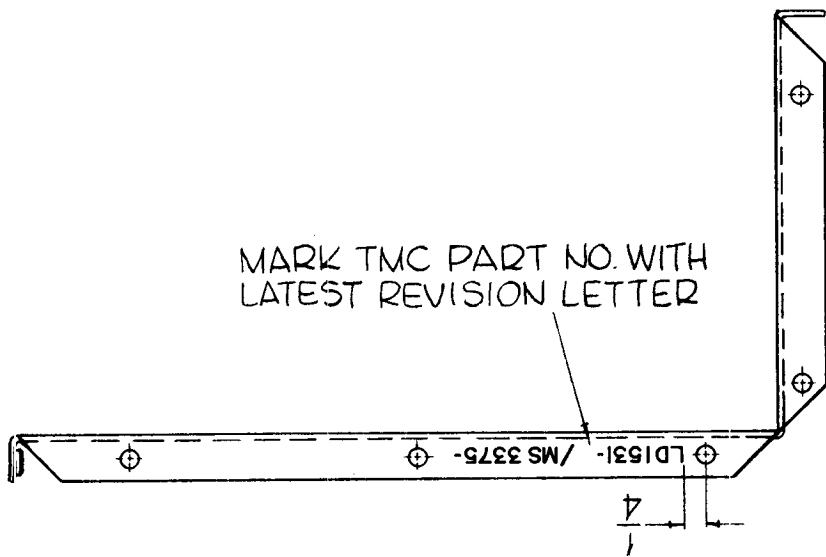


UNLESS OTHERWISE SPECIFIED:
MARKING PROCESS: AS PER TMC SPECIFICATION S-727.
LETTERING: 1/8 HIGH BLACK GOTHIC, LOCATED AS SHOWN.
 MARK TMC PART NO WITH LATEST REVISION LETTERS, 1/8 HIGH BLACK GOTHIC.

REF: MS 3782 (1)

| REQ. | ITEM | PART NO. | O. POSE | | | | DESCRIPTION | SYMBOL |
|---|------------------|---|------------|--------------------|---------|-----------------|--|---------------------|
| | | | STOCK SIZE | | | | THE TECHNICAL MATERIEL CORP. MAMARONECK, NEW YORK | |
| \emptyset | ORIGINAL RELEASE | 11/1/65 | | | | | MARKING, MOUNTING PLATE, TUBE SOCKET | |
| X | EXPER. RELEASE | 4-22-64 | 1 | <i>John</i> | | | MARKING PROCESS-PER TMC SPEC S-727 | |
| SYM | DESCRIPTION | DATE | CH. NO. | DRAFTS | CHECKER | ENG. APP. | MATERIAL | |
| UNLESS OTHERWISE SPECIFIED DIMENSIONS ARE IN INCHES AND INCLUDE CHEMICALLY APPLIED OR PLATED FINISHES | | SCALE | 1:1 | | | | | |
| DECIMALS: .X \pm .05 .XX \pm .01 .XXX \pm .005 | TOLERANCES | FRACTIONS \pm 1/64 ANGLES \pm 0° 30' | CODE A | | | | | TYPE & TEMPER |
| | | | | HEAT TREAT. SPEC. | | DRAWN | CHECKED | FINAL APPROVAL |
| | | | | FINISH & SPEC. NO. | | ELEC. DES. APP. | MECH. DES. APP. | LD 1524 \emptyset |

| | | | | |
|---------------|---------|------------|------|----------|
| REQ. PER UNIT | USED ON | | | LD153110 |
| | MODEL | ASS'Y. NO. | DATE | |
| 1 | TTR-10 | | | |



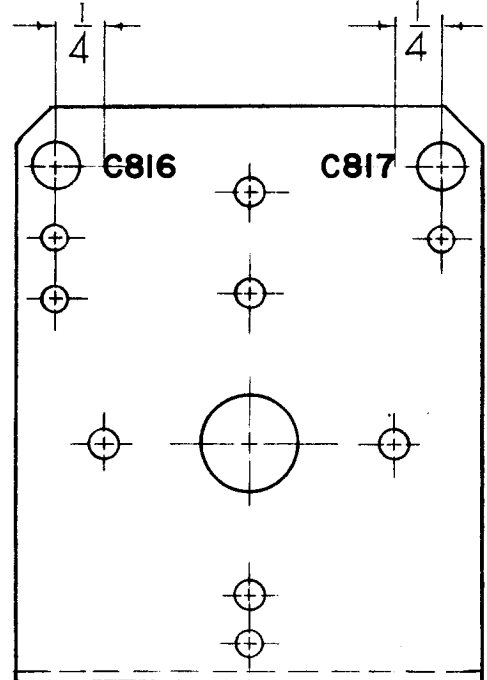
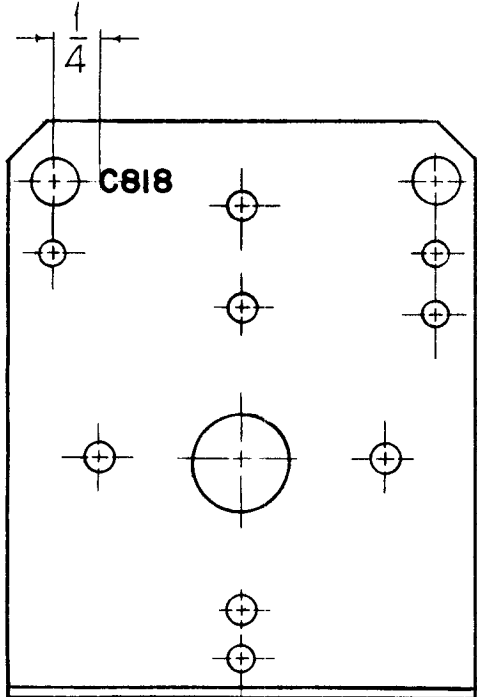
MARKING PROCESS: AS PER TMC SPECIFICATION S-727.

LETTERING: 1/8 HIGH BLACK GOTHIC, LOCATED AS SHOWN.

| | | | | | | | | | | | |
|---|-------------------------------------|---|---------|------------|---------|-----------|--------------------|----------|--|-----------------|----------|
| | | | | | | | REQ. ITEM | PART NO. | JORDAN | DESCRIPTION | SYMBOL |
| | | | | | | | // | | THE TECHNICAL MATERIEL CORP. MAMARONECK. NEW YORK | | |
| 0 | ORIGINAL RELEASE FOR PRODUCTION | 5.22.64 | | WB | | | // | | MARKING, CHASSIS, CONVERTOR MODULES | | |
| X | EXPERIMENTAL RELEASE FOR PRODUCTION | | | | | | // | | MARKING METHOD: AS PER TMC SPEC S727 | | |
| SYM | DESCRIPTION | DATE | CH. NO. | DRAFTS | CHECKER | ENG. APP. | MATERIAL | | John C Biele | @ 5-22-64 | |
| UNLESS OTHERWISE SPECIFIED DIMENSIONS ARE IN INCHES AND INCLUDE CHEMICALLY APPLIED OR PLATED FINISHES | | SCALE | | // | | | // | // | John C Biele | @ 5-22-64 | |
| DECIMALS .X ± .05 .XX ± .01 .XXX ± .005 | | FRACTIONS ± 1/64 ANGLES ± 0° 30' | | TOLERANCES | | CODE | // | | TR [Signature] | to JORDAN 5/22 | |
| | | | | | | A | FINISH & SPEC. NO. | | ELEC. DES. APP. | MECH. DES. APP. | LD153110 |

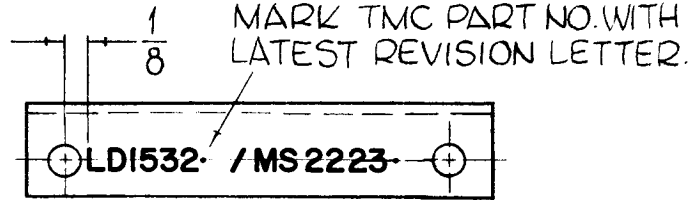
| | | | |
|---------------|---------|------------|------|
| REQ. PER UNIT | USED ON | | |
| | MODEL | ASS'Y. NO. | DATE |
| 1 | CLL-1 | | |

LD1532 0



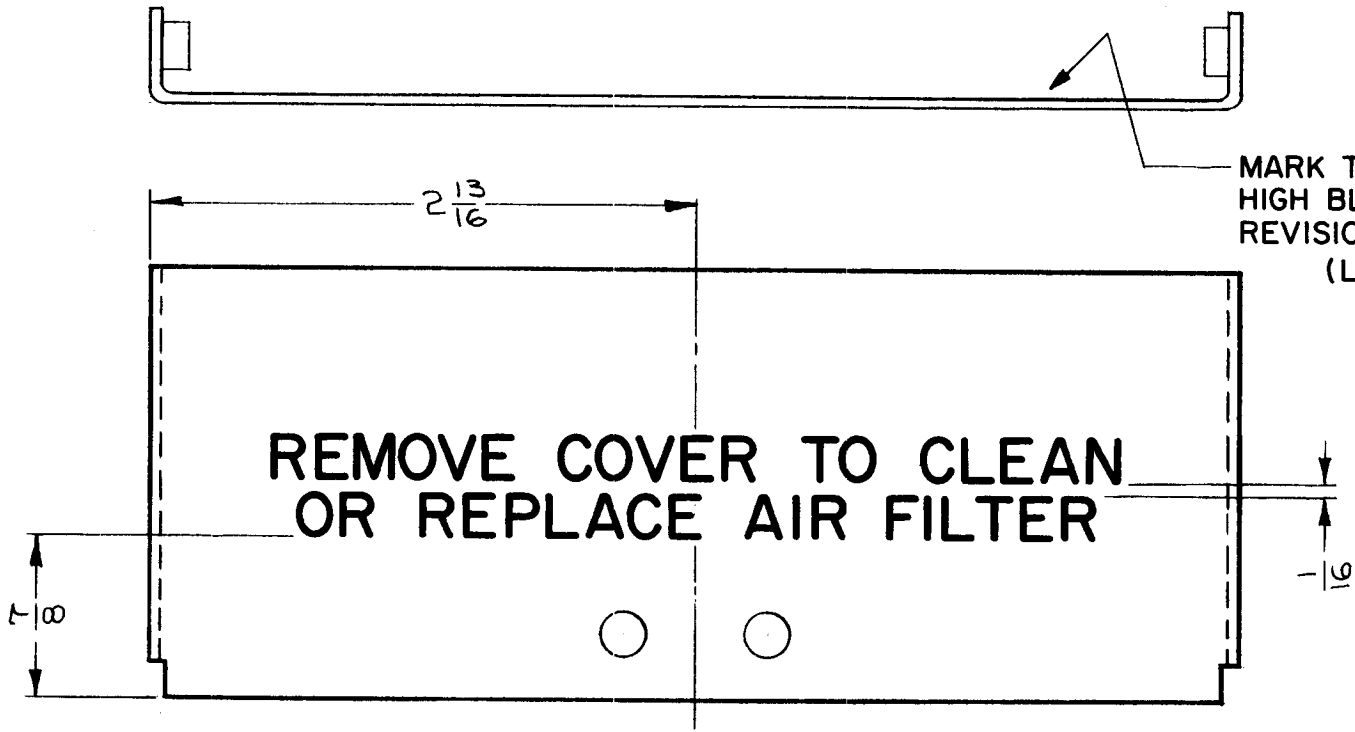
MARKING PROCESS: AS PER TMC SPECIFICATION S-727.

LETTERING: 1/8 HIGH BLACK GOTHIC, LOCATED AS SHOWN.



| | | | | | | | | | | | | |
|---|-------------------------------------|---|---------|------------|---------|-----------|--------------------|----------|--|-------------|-----------------|----------------|
| | | | | | | | REQ. ITEM | PART NO. | POSE | DESCRIPTION | SYMBOL | |
| 0 | ORIGINAL RELEASE FOR PRODUCTION | 522 64 | → | WB | @ | | // | | THE TECHNICAL MATERIEL CORP. MAMARONECK, NEW YORK | | | |
| X | EXPERIMENTAL RELEASE FOR PRODUCTION | | | | | | // | | MARKING, BRKT, MTG. SWITCH & CAPACITORS | | | |
| SYM | DESCRIPTION | DATE | CH. NO. | DRAFTS | CHECKER | ENG. APP. | MATERIAL | | MARKING METHOD: AS PER TMC SPEC S727 | | | |
| UNLESS OTHERWISE SPECIFIED DIMENSIONS ARE IN INCHES AND INCLUDE CHEMICALLY APPLIED OR PLATED FINISHES | | SCALE | | // | | | // | | John C. Biele @ 5-22-64 | | | |
| DECIMALS: .X ± .05 .XX ± .01 .XXX ± .005 | | FRACTIONS ± 1/64 ANGLES ± 0° 30' | | TOLERANCES | | CODE A | // | | DRAWN | | CHECKED | FINAL APPROVAL |
| | | | | | | | FINISH & SPEC. NO. | | ELEC. DES. APP. | | MECH. DES. APP. | LD1532 0 |

| | | | | | |
|---------------|---------|------------|---------|--------|---|
| REQ. PER UNIT | USED ON | | | LD1538 | ∅ |
| | MODEL | ASS'Y. NO. | DATE | | |
| 1 | SBS-7 | A2887 | 5-14-64 | | |

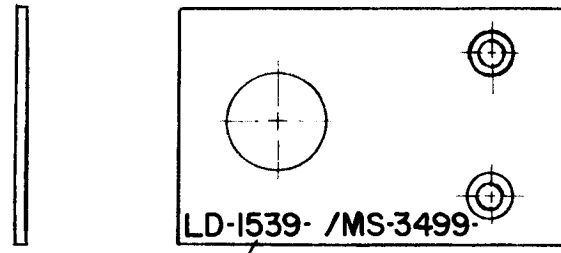
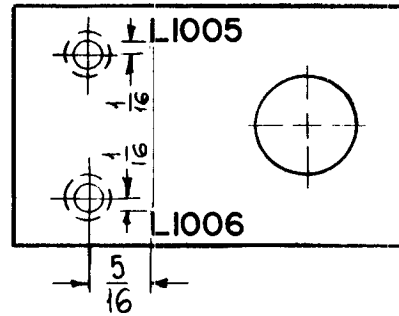


MARKING PROCESS: AS PER TMC SPECIFICATION S-727.
LETTERING: 1/4 HIGH BLACK GOTHIC, LOCATED AS SHOWN.

REF: MS3800 (1)

| REQ. | ITEM | PART NO. | O. POSE | DESCRIPTION | SYMBOL | | | | | | | |
|---|------------------|---|-----------|--|---------|---------------|--------------------|-------------------------------------|-------------------|-----------------|---------|----------------|
| ∅ | ORIGINAL RELEASE | "1/65 | | THE TECHNICAL MATERIEL CORP. MAMARONECK. NEW YORK | | | | | | | | |
| X | EXPER. RELEASE | 5-14-64 | 1 | MARKING, COVER, HOUSING, BLOWER | | | | | | | | |
| SYM | DESCRIPTION | DATE | CH. NO. | DRAFTS | CHECKER | ENG. APP. | MATERIAL | MARKING PROCESS-PER TMC SPEC. S-727 | | | | |
| UNLESS OTHERWISE SPECIFIED DIMENSIONS ARE IN INCHES AND INCLUDE CHEMICALLY APPLIED OR PLATED FINISHES | | SCALE | 1:1 | | | TYPE & TEMPER | | | HEAT TREAT. SPEC. | DRAWN | CHECKED | FINAL APPROVAL |
| DECIMALS .X ± .05 .XX ± .01 .XXX ± .005 | TOLERANCES | FRACTIONS ± 1/64 ANGLES ± 0° 30' | CODE A | | | | FINISH & SPEC. NO. | | ELEC. DES. APP. | MECH. DES. APP. | LD1538 | ∅ |

| | | | | | |
|---------------|-------------|------------|---------|--------|---|
| REQ. PER UNIT | USED ON | | | LD1539 | A |
| | MODEL | ASS'Y. NO. | DATE | | |
| 1 | GPT-10K(17) | AX-504 | 5-15-64 | | |

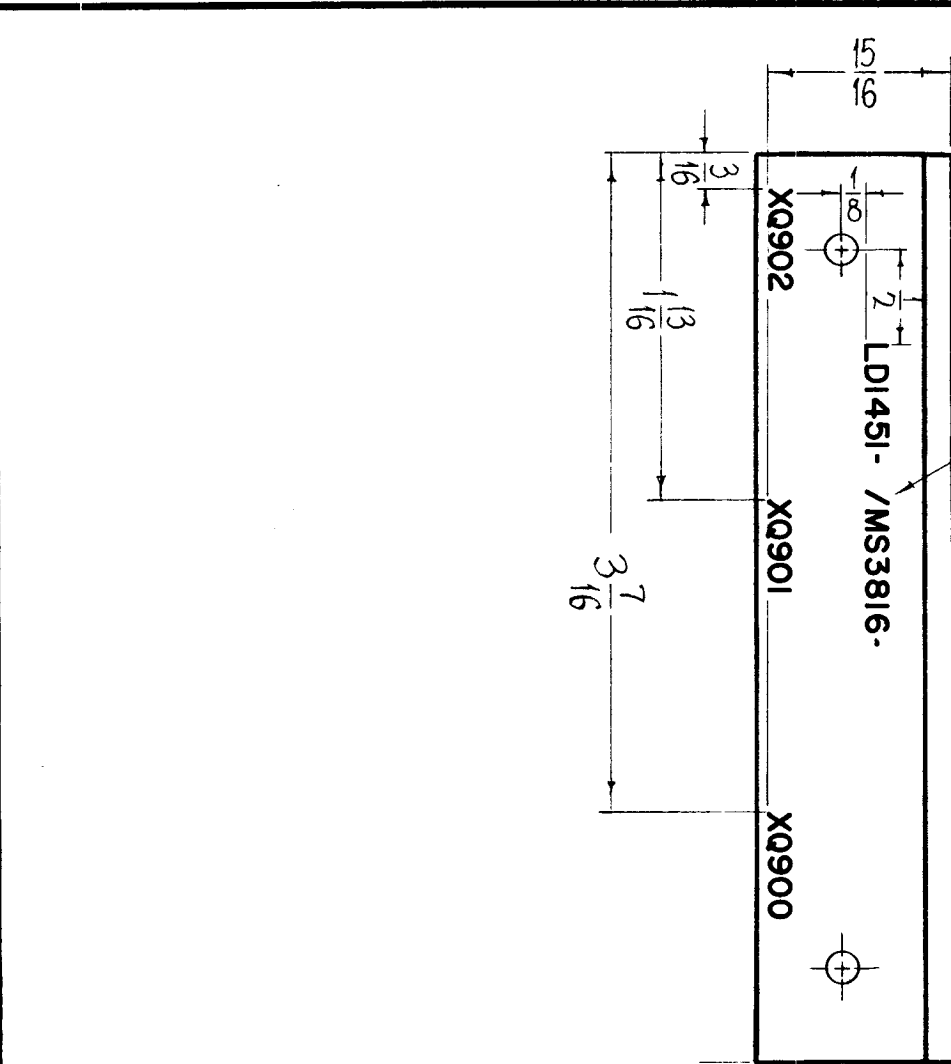


MARK TMC PART NO.
W/LATEST REV. LETTER

MARKING PROCESS: AS PER TMC SPECIFICATION S-727.
LETTERING: 1/8 HIGH BLACK GOTHIC, LOCATED AS SHOWN.

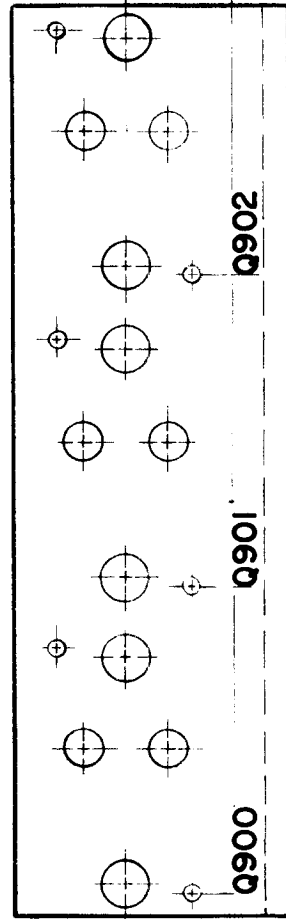
REF: MS-3499

| | | | | | | | | | | | | |
|---|---------------------------------|--|---------|--------------|-------------------------------|-----------|--------------------|--|-------------------|--------|---------|----------------|
| REQ. ITEM | PART NO. | L. BUTLER DESCRIPTION | | | SYMBOL | | | | | | | |
| | | THE TECHNICAL MATERIEL CORP. MAMARONECK, NEW YORK | | | | | | | | | | |
| A | COUNTERSINK SYMB. REVERS. | 12/30/68 | 19134 | LTT. J.D. FB | STOCK SIZE | | | | | | | |
| O | ORIGINAL RELEASE FOR PRODUCTION | 5/28/64 | 0 | A.M. | MARKING PLATE, RF FILTER MTG. | | | | | | | |
| SYM | DESCRIPTION | DATE | CH. NO. | DRAFTS | CHECKER | ENG. APP. | MATERIAL | MARKING PROCESS: AS PER TMC SPEC S-727 | | | | |
| UNLESS OTHERWISE SPECIFIED DIMENSIONS ARE IN INCHES AND INCLUDE CHEMICALLY APPLIED OR PLATED FINISHES | | SCALE | 1"=1" | | | | | SRG | aa | RL | | |
| DECIMALS .X ± .05 .XX ± .01 .XXX ± .005 | | FRACTIONS ± 1/64 ANGLES ± 0° 30' | | TOLERANCES | | CODE | | TYPE & TEMPER | HEAT TREAT. SPEC. | DRAWN | CHECKED | FINAL APPROVAL |
| | | | | | | | FINISH & SPEC. NO. | ELEC. DES. APP. | MECH. DES. APP. | LD1539 | A | |



| REQ. PER UNIT | USED ON | | |
|---------------|---------|------------|---------|
| | MODEL | ASS'Y. NO. | DATE |
| 1 | STR-1A | | 5-18-64 |
| 1 | STE | | 5-18-64 |

LD1541 Ø



MARK TMC NO. WITH LATEST REVISION LETTERS.

MARKING PROCESS: AS PER TMC SPECIFICATION S-727.

LETTERING: 1/8 HIGH BLACK GOTHIC, LOCATED AS SHOWN.

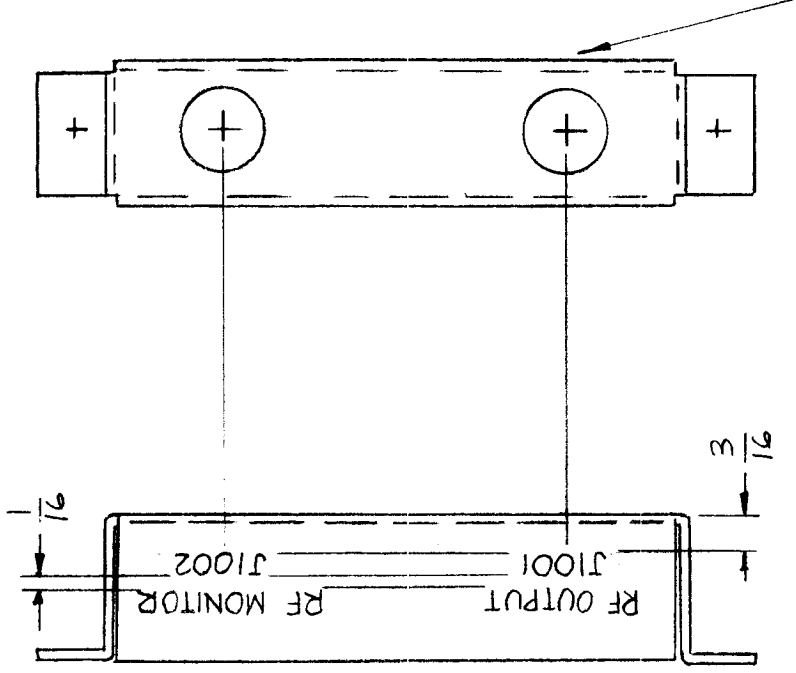
REF-TMC DWG MS3816

| REQ. | ITEM | PART NO. | T. AALTONEN | DESCRIPTION | SYMBOL | | | | |
|---|-------------|----------|---|--|-----------|---------|--------------------|----------|---|
| | | | | THE TECHNICAL MATERIEL CORP. MAMARONECK, NEW YORK | | | | | |
| Ø | | | 9-24-64 | ORIGINAL RELEASE FOR PRODUCTION | J.L. | | | | |
| X | | | 5-18-64 | EXPERIMENTAL RELEASE | G.D.L. | | | | |
| SYM | DESCRIPTION | | DATE | CH. NO. | DRAFTS | CHECKER | ENG. APP. | MATERIAL | MARKING, BRKT MTG. HEAT SINK MARKING METHOD: AS PER TMC SPEC. S727 |
| UNLESS OTHERWISE SPECIFIED DIMENSIONS ARE IN INCHES AND INCLUDE CHEMICALLY APPLIED OR PLATED FINISHES | | | SCALE | | 1:1 | | TYPE & TEMPER | | John C Biele |
| DECIMALS .X ± .05 .XX ± .01 .XXX ± .005 | | | FRACTIONS ± 1/64 ANGLES ± 0° 30' | | CODE A | | HEAT TREAT. SPEC. | | DRAWN JRC |
| TOLERANCES | | | | | | | FINISH & SPEC. NO. | | CHECKED KTC |
| | | | | | | | ELEC. DES. APP. | | MECH. DES. APP. |
| | | | | | | | | | LD-1541 Ø |

APPLICATION

REVISIONS

| QTY | MODEL USED ON | ASSY NO. | ITR | DESCRIPTION | DATE | F M N NO | DRAFT | CHKD | APPD |
|-----|---------------|----------|-----|---|--------|----------|-------|------|------|
| 1 | CHG-3 | A4558 | X | EXP. RELEASE ORIGINAL RELEASE FOR PRODUCT | 1-4-67 | | PH | PH | |
| 1 | CHGR-3 | A4558 | Ø | | 1-9-67 | | LD | | |



MARKING PROCESS: AS PER TMC SPECIFICATION S-727.

LETTERING: 1/8 HIGH BLACK GOTHIC, LOCATED AS SHOWN.

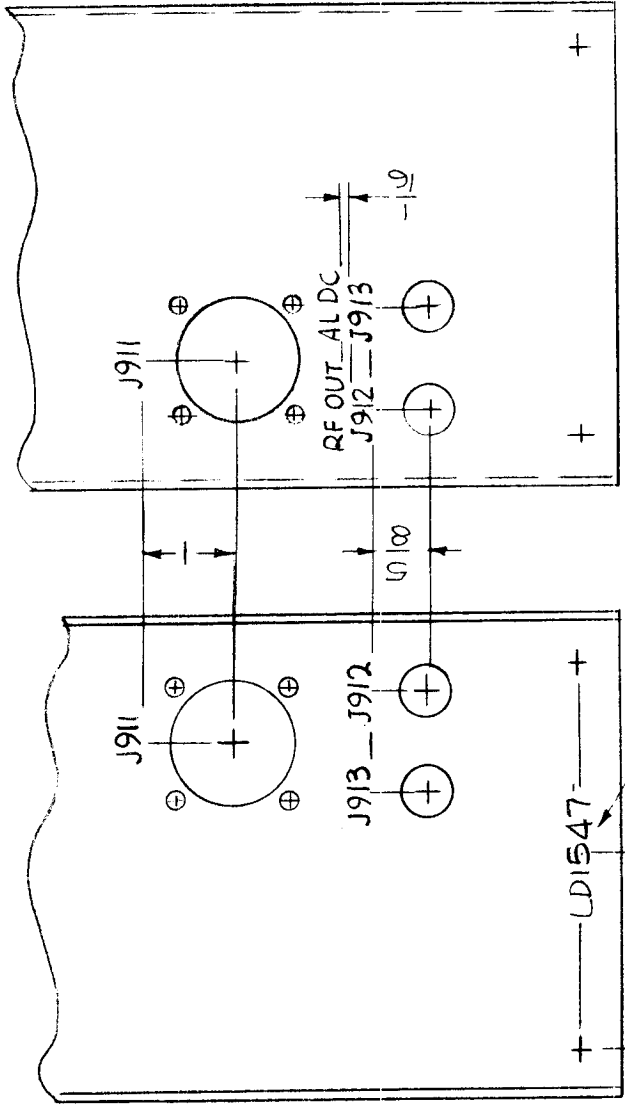
MARK TMC P/N
LD1544
1/8 HIGH GOTHIC
W/LATEST REV.
LETTER.

REF: MS6056

| UNLESS OTHERWISE SPECIFIED DIMENSIONS ARE IN INCHES AND INCLUDE CHEMICALLY APPLIED OR PLATED FINISHES | REQ'D ITEM | PART NUMBER | DESCRIPTION | SYM. |
|---|------------|-------------|---|----------|
| DECIMALS .X ± .05 TOLS. 1/64 .XX ± .01 ANGLES 0° 30' .XXX ± .005 | O. POSE | | LIST OF MATERIAL | |
| MATERIAL | | | THE TECHNICAL MATERIEL CORP. MAMARONECK, NEW YORK | |
| FINISH | | | MARKING, BRKT, MTG. RF OUTPUT AS PER TMC SPEC. S-727 | |
| | | | SIZE CODE IDENT. NO. DWG NO. | ISSUE |
| | A | 82679 | LD1544 | Ø |
| | | | SCALE 1:1 | SHEET OF |

NOTICE TO PERSONS RECEIVING THIS DRAWING
THE TECHNICAL MATERIEL CORPORATION claims proprietary right in the material disclosed hereon. This drawing is issued in confidence for engineering information only and may not be reproduced or used to manufacture anything shown hereon without permission from THE TECHNICAL MATERIEL CORPORATION to the user. This drawing is loaned for mutual assistance and is subject to recall at any time.

| APPLICATION | | | REVISIONS | | | | | | |
|-------------|---------------|-----------|-----------|--------------------------------|---------|----------|-------|------|------|
| QTY | MODEL USED ON | ASS'Y NO. | LTR | DESCRIPTION | DATE | E.M.N.NO | DRAFT | CHKD | APPD |
| 1 | SBT-1KPA 2 | | X | EXP. RELEASE | 2-16-67 | | | | |
| | | | X1 | LEFT VIEW J913 & J912 REVERSED | 3-13-67 | | | | |
| | | | | ORIG RELEASE FOR PROD | 4-6-67 | Ø | CV | | |



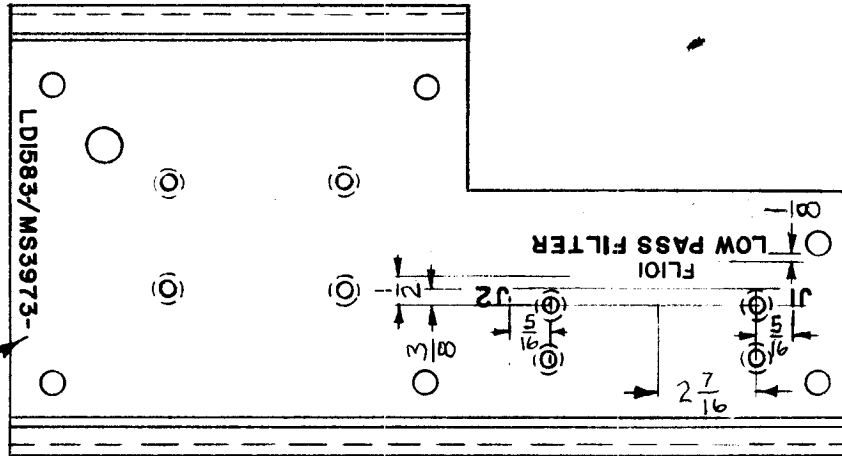
MARK TMC P/N
 3/8 HIGH GOTHIC
 W/LATEST REV
 LETTER.

MARKING PROCESS: AS PER TMC SPECIFICATION S-727.
LETTERING: 1/8 HIGH BLACK GOTHIC, LOCATED AS SHOWN.

REF: MS 6092-

| UNLESS OTHERWISE SPECIFIED DIMENSIONS ARE IN INCHES AND INCLUDE CHEMICALLY APPLIED OR PLATED FINISHES | REQ'D ITEM | PART NUMBER | DESCRIPTION | SYM. |
|---|-------------|-----------------|--|-------------|
| DECIMALS .X ± .05 .XX ± .01 .XXX ± .005 | F. BUDETTI | | LIST OF MATERIAL | |
| FRACTIONS 1/64 | | | THE TECHNICAL MATERIEL CORP. MAMARONECK, NEW YORK | |
| TOLS. ANGLES 0° .30' | | | MARKING BRKT MTG. COMPONENTS AS PER TMC SPEC. S-727 | |
| MATERIAL | | | | |
| FINISH | | | | |
| S401-451, S401-S401- | | | | |
| NOTICE TO PERSONS RECEIVING THIS DRAWING | | | | |
| THE TECHNICAL MATERIEL CORPORATION claims proprietary right in the material disclosed hereon. This drawing is issued in confidence for engineering information only and may not be reproduced or used to manufacture anything shown hereon without permission from THE TECHNICAL MATERIEL CORPORATION to the user. This drawing is loaned for mutual assistance and is subject to recall at any time. | | | | |
| | DATE | DATE | DATE | DATE |
| | 2-16-67 | 3-13-67 | 4-6-67 | |
| | APPROVED | MECH. DES. | ELECT. DES. | CHECKED |
| | [Signature] | [Signature] | [Signature] | [Signature] |
| | DRAWN | | | |
| | [Signature] | | | |
| | SIZE | CODE IDENT. NO. | DWG NO. | ISSUE |
| A | 82679 | LD1547 | | Ø |
| SCALE 1:2 | | | SHEET | OF |

| | | | | | |
|---------------|---------|------------|---------|--------|---|
| REQ. PER UNIT | USED ON | | | LD1583 | B |
| | MODEL | ASS'Y. NO. | DATE | | |
| 1 | VLRB-1 | | 7-27-64 | | |



MARK TMC P/N
1/8 HIGH BLACK
GOTHIC W/LATEST
REV. LETTERS.

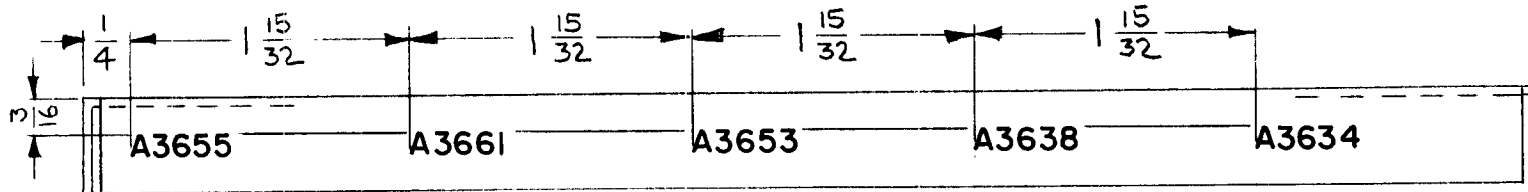
MARKING PROCESS: AS PER TMC SPECIFICATION S-727.

LETTERING: 1/8 HIGH BLACK GOTHIC, LOCATED AS SHOWN.

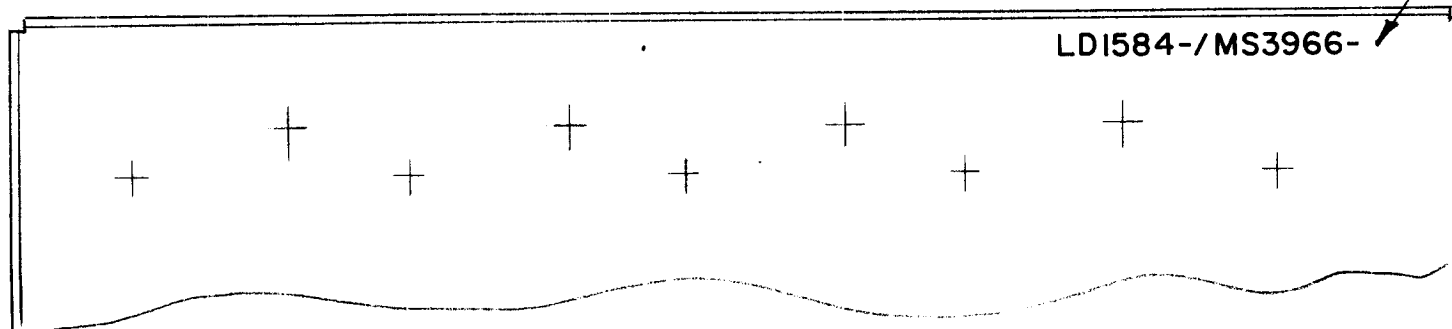
REF.: MS3973

| | | | | | | | | | | | | | | | |
|---|---------------------------------|---|---------|-----------|---------|--------------------|----------|--|---------------------------|-----------------|--|---------|--|----------------|--|
| B | J1 & J2 ADDED. | 3.30.65 | 13626 | J.L. | J.L. | REQ. ITEM | PART NO. | GELLMAN | DESCRIPTION SK 3136-LD-29 | SYMBOL | | | | | |
| A | ON LETTERING FL101 WAS FX208 | 10.19.64 | 12698 | J.L. | @ | --- | | THE TECHNICAL MATERIEL CORP. MAMARONECK. NEW YORK | | | | | | | |
| Ø | ORIGINAL RELEASE FOR PRODUCTION | 8.3.64 | + | WB | | STOCK SIZE | | MARKING, PLATE, REAR | | | | | | | |
| X | EXPERIMENTAL RELEASE | 7.27.64 | + | WB | | --- | | MARKING METHOD TMC S-727 | | | | | | | |
| SYM | DESCRIPTION | DATE | CH. NO. | DRAFTS | CHECKER | ENG. APP. | MATERIAL | | | | | | | | |
| UNLESS OTHERWISE SPECIFIED DIMENSIONS ARE IN INCHES AND INCLUDE CHEMICALLY APPLIED OR PLATED FINISHES | | SCALE | | | | NONE | | | | | | | | | |
| DECIMALS .X ± .05 .XX ± .01 .XXX ± .005 | | FRACTIONS ± 1/64 ANGLES ± 0° 30' | | CODE A | | TYPE & TEMPER | | HEAT TREAT. SPEC. | | DRAWN | | CHECKED | | FINAL APPROVAL | |
| TOLERANCES | | | | | | --- | | --- | | WB | | @ | | KOL | |
| | | | | | | --- | | --- | | K | | M.B. | | LD1583 B | |
| | | | | | | FINISH & SPEC. NO. | | ELEC. DES. APP. | | MECH. DES. APP. | | LD1583 | | B | |

| | | | | | |
|---------------|---------|------------|---------|--------|---|
| REQ. PER UNIT | USED ON | | | LD1584 | Ø |
| | MODEL | ASS'Y. NO. | DATE | | |
| 1 | VLRB-1 | | 7.28.64 | | |



MARK TMC PART NO. 1/8 HIGH GOTHIC, W/LATEST REV. LETTER.



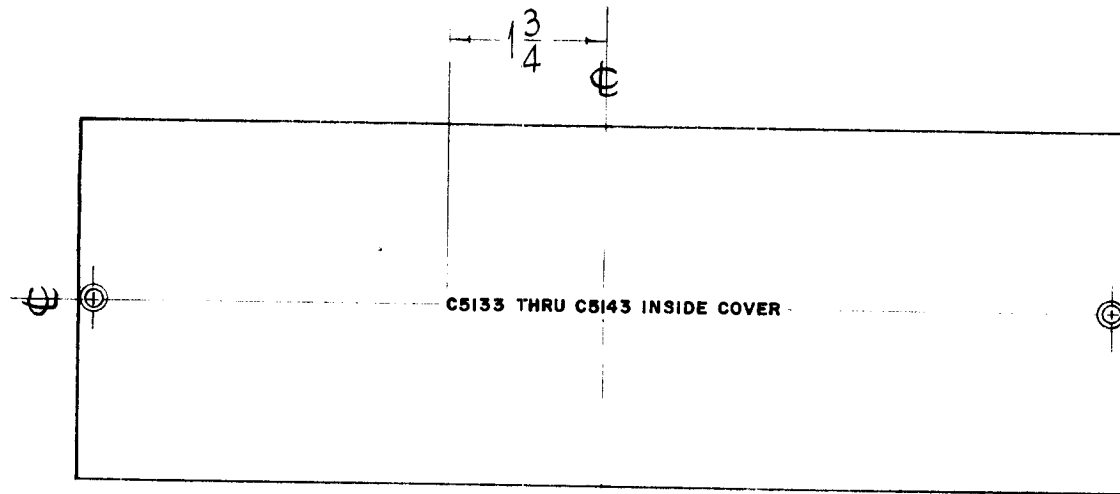
MARKING PROCESS: AS PER TMC SPECIFICATION S-727.

LETTERING: 1/8 HIGH BLACK GOTHIC, LOCATED AS SHOWN.

REF: MS3966

| | | | | | | | | | | | | |
|---|---------------------------------|---|---------|--------|---------|--------------------|---------------------------------|-----------------|--|--------------------------|----------------|--|
| | | | | | | | REQ. ITEM | PART NO. | GELLMAN | DESCRIPTION SK3136-LD-30 | SYMBOL | |
| Ø | ORIGINAL RELEASE FOR PRODUCTION | 8.3.64 | - | WB | | | | | THE TECHNICAL MATERIEL CORP. MAMARONECK. NEW YORK | | | |
| X | EXPER. RELEASE | 7.28.64 | - | WB | | | | | MARKING, BRACE, FRONT | | | |
| SYM | DESCRIPTION | DATE | CH. NO. | DRAFTS | CHECKER | ENG. APP. | MATERIAL | | MARKING METHOD-TMC S-727 | | | |
| UNLESS OTHERWISE SPECIFIED DIMENSIONS ARE IN INCHES AND INCLUDE CHEMICALLY APPLIED OR PLATED FINISHES | | SCALE | | | | | | | WB | @ | RIC | |
| | | 1:1 | | | | | TYPE & TEMPER HEAT TREAT. SPEC. | | DRAWN | CHECKED | FINAL APPROVAL | |
| DECIMALS .X ± .05 .XX ± .01 .XXX ± .005 | TOLERANCES | FRACTIONS ± 1/64 ANGLES ± 0° 30' | CODE | | | | | | | LD1584 Ø | | |
| | | A | | | | FINISH & SPEC. NO. | | ELEC. DES. APP. | MECH. DES. APP. | | | |

| | | | | |
|---------------|---------|------------|--------|------------|
| REQ. PER UNIT | USED ON | | | LD1592 Ø |
| | MODEL | ASS'Y. NO. | DATE | |
| 1 | GPT200K | AX395 | 8-6-64 | |



MARK TMC PT. NO.
LD1592/MS3996
W/LATEST
REVISION
LETTERS ON
REAR AS PER
TMC SPEC.
S727.

FRONT VIEW SHOWN

MARKING PROCESS: AS PER TMC SPECIFICATION S-727.

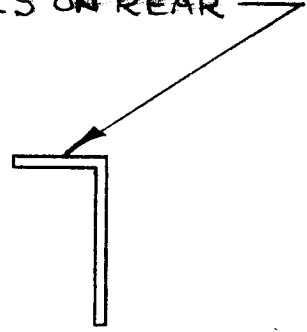
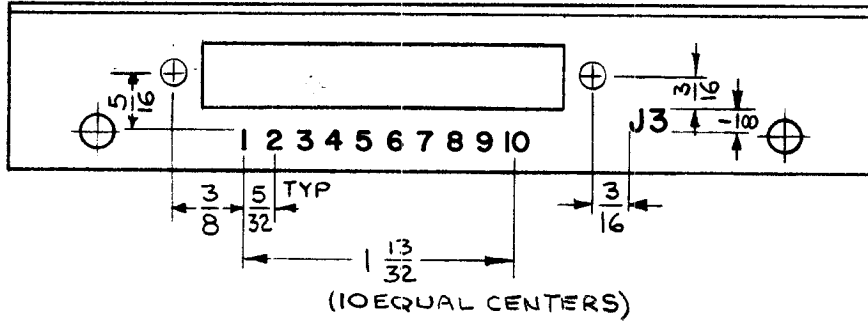
LETTERING: 1/8 HIGH BLACK GOTHIC, LOCATED AS SHOWN.

REF. TMC DWG. MS 3996

| | | | | | | | | | | | | |
|---|---------------------------------|---|---------|--------|---------|---------------|---------------------------------------|-------------------|--|-----------------|----------------|--|
| | | | | | | | REQ. ITEM | PART NO. | F. BUDETTI | DESCRIPTION | SYMBOL | |
| | | | | | | | STOCK SIZE | | THE TECHNICAL MATERIEL CORP. MAMARONECK, NEW YORK | | | |
| Ø | ORIGINAL RELEASE FOR PRODUCTION | 3/24/64 | | | | | MARKING, FRONT COVER. | | | | | |
| SYM | | DATE | CH. NO. | DRAFTS | CHECKER | ENG. APP. | MARKING METHOD: AS PER TMC SPEC S-727 | | | | | |
| UNLESS OTHERWISE SPECIFIED DIMENSIONS ARE IN INCHES AND INCLUDE CHEMICALLY APPLIED OR PLATED FINISHES | | SCALE | | | | | MATERIAL | | John C Biele | | | |
| DECIMALS .X ± .05 .XX ± .01 .XXX ± .005 | | FRACTIONS ± 1/64 ANGLES ± 0° 30' | | CODE | | TYPE & TEMPER | | HEAT TREAT. SPEC. | DRAWN | CHECKED | FINAL APPROVAL | |
| TOLERANCES | | | | | | | | | DB | ac 8/24/63 | LD 1592 Ø | |
| | | | | | | | FINISH & SPEC. NO. | | ELEC. DES. APP. | MECH. DES. APP. | | |

| | | | | | |
|---------------|---------|------------|-----------|--------|---|
| REQ. PER UNIT | USED ON | | | LD1593 | Ø |
| | MODEL | ASS'Y. NO. | DATE | | |
| | AZ102 | | 8.24.1964 | | |

MARK TMC P/N (LD1593- /MS3921-)
 1/8 HIGH GOTHIC WITH LATEST
 REVISION LETTERS ON REAR



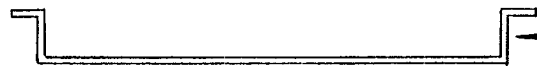
MARKING PROCESS: AS PER TMC SPECIFICATION S-727.

LETTERING: 3/32 HIGH BLACK GOTHIC, LOCATED AS SHOWN.

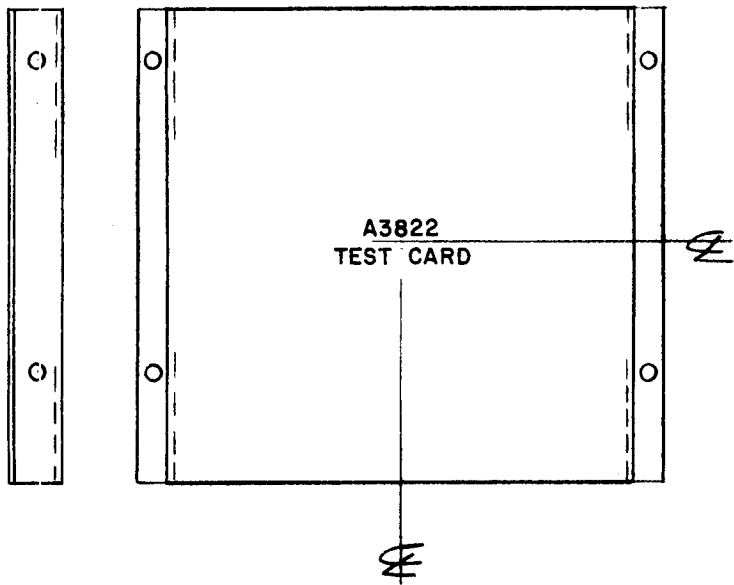
REF: MS3921

| | | | | | | | | | | | | | | |
|---|---------------------------------|---|-----------|--------|---------|-----------|-----------|--------------------|--|--------------------------|--------|---------|----------------|---|
| | | | | | | | REQ. ITEM | PART NO. | R HAY | DESCRIPTION | SYMBOL | | | |
| Ø | ORIGINAL RELEASE FOR PRODUCTION | 1.6.65 | Ø | JL | | | | STOCK SIZE | THE TECHNICAL MATERIEL CORP. MAMARONECK. NEW YORK | | | | | |
| X | EXPER. RELEASE | 8.24.64 | + | WB | | | | | MARKING, BRACKET, CONNECTOR | | | | | |
| SYM | DESCRIPTION | DATE | CH. NO. | DRAFTS | CHECKER | ENG. APP. | MATERIAL | | | MARKING METHOD TMC S-727 | | | | |
| UNLESS OTHERWISE SPECIFIED DIMENSIONS ARE IN INCHES AND INCLUDE CHEMICALLY APPLIED OR PLATED FINISHES | | SCALE | | | | | | | WB | @ | KAC | | | |
| | | 1:1 | | | | | | | TYPE & TEMPER | HEAT TREAT. SPEC. | DRAWN | CHECKED | FINAL APPROVAL | |
| DECIMALS .X ± .05 .XX ± .01 .XXX ± .005 | TOLERANCES | FRACTIONS ± 1/64 ANGLES ± 0° 30' | CODE A | | | | | | | | | | LD1593 | Ø |
| | | | | | | | | FINISH & SPEC. NO. | ELEC. DES. APP. | MECH. DES. APP. | | | | |

| | | | | | |
|---------------|---------|------------|--------|--------|---|
| REQ. PER UNIT | USED ON | | | LD1595 | Φ |
| | MODEL | ASS'Y. NO. | DATE | | |
| 1 | VLRB-1 | | 9-3-64 | | |



MARK TMC PART NO
1/8 HIGH BLACK GOTHIC
WITH LATEST REVISION
LETTERS (LD1595-/MS3984-)



~ UNLESS OTHERWISE SPECIFIED ~
1- ALL LETTERING TO BE 1/8 HIGH BLACK GOTHIC.
2- MARKING PROCESS: PER TMC SPEC. S-727.
3- 1/16" SPACING BETWEEN LETTER GROUP.

REF: MS3984 (1)

| REQ. | ITEM | PART NO. | GELLMAN | | DESCRIPTION | SYMBOL | |
|---|---------------------------------|---|-------------------|--------------------|--|--------------------|--|
| | | 44 | | | THE TECHNICAL MATERIEL CORP. MAMARONECK. NEW YORK | | |
| Φ | ORIGINAL RELEASE FOR PRODUCTION | 9-3-64 | Φ | <i>[Signature]</i> | MARKING, BRACKET | | |
| X | EXPER. RELEASE | 9-3-64 | X | <i>[Signature]</i> | MARKING PROCESS PER TMC SPEC S727 | | |
| SYM | DESCRIPTION | DATE | CH. NO. | DRAFTS | CHECKER | ENG. APP. | |
| UNLESS OTHERWISE SPECIFIED DIMENSIONS ARE IN INCHES AND INCLUDE CHEMICALLY APPLIED OR PLATED FINISHES | | SCALE | 1:2 | | | | |
| DECIMALS .X ± .05 .XX ± .01 .XXX ± .005 | TOLERANCES | FRACTIONS ± 1/64 ANGLES ± 0° 30' | CODE | A | | | |
| | | TYPE & TEMPER | HEAT TREAT. SPEC. | DRAWN | CHECKED | FINAL APPROVAL | |
| | | 44 | 44 | <i>[Signature]</i> | <i>[Signature]</i> | <i>[Signature]</i> | |
| | | FINISH & SPEC. NO. | ELEC. DES. APP. | MECH. DES. APP. | LD1595 Φ | | |