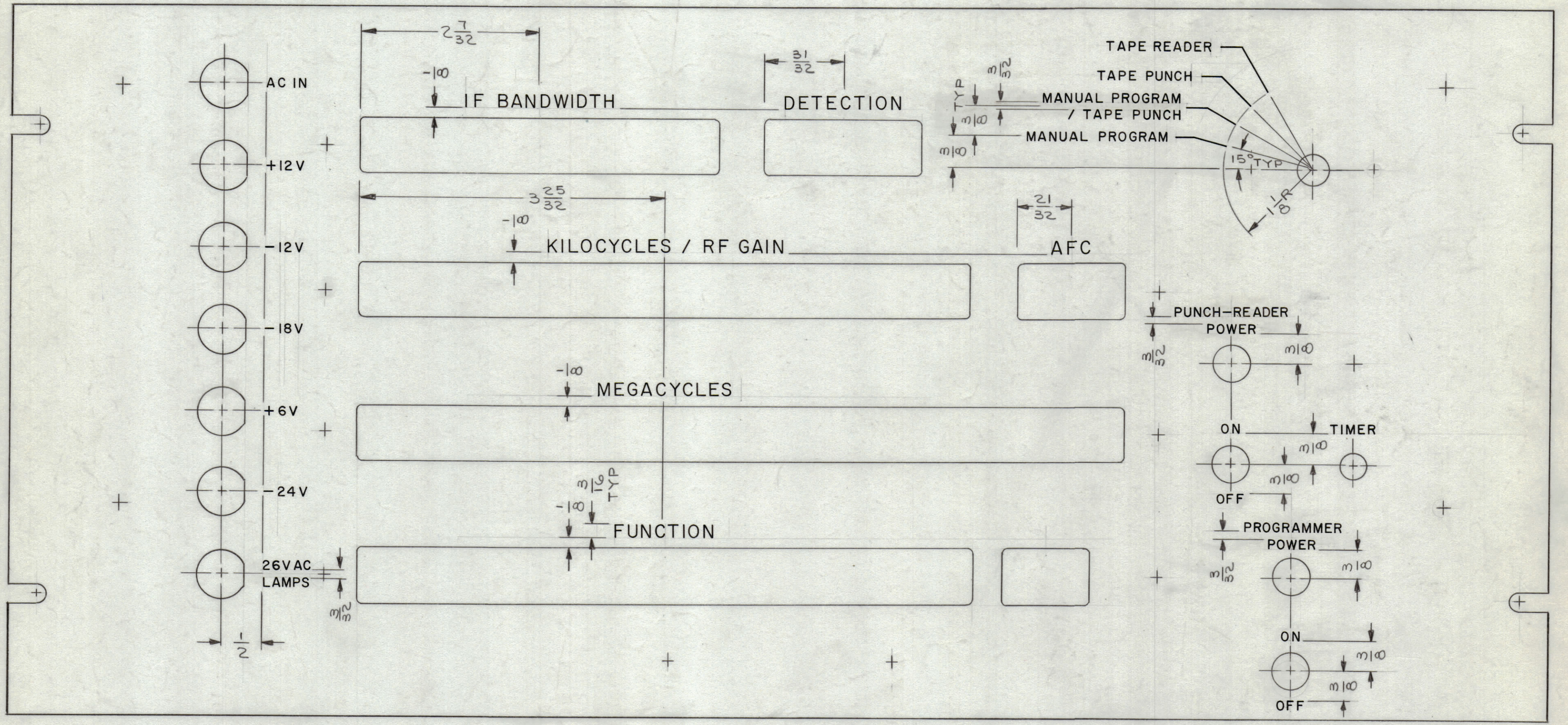


REVISIONS						
ZONE	SYM	DESCRIPTION	DATE	E.M.N. NO.	DRAFT	CHKD
DG	X1	26VAC WAS 28VAC	9.25.64	-	JLB	W.J.
	X2	ADDED SHT-2	11/1/64	X2	JL	JM W.J.
		ORIGINAL RELEASE FOR PRODUCTION	2.10.65		JLB	JLB



HEIGHT OF LETTER	DEPTH OF STROKE	WIDTH OF STROKE
1/8	.010	.020
3/16	.010	.025
LINES	.010	.015

- ~ UNLESS OTHERWISE SPECIFIED ~
- 1- ALL LETTERING GROUPS TO BE CENTERED ON HOLES.
  - 2- ENGRAVING TO BE 1/8 HIGH GOTHIC.
  - 3- ALL LETTERING & LINEWORK TO BE WHITE FILLED.
  - 4- ALL ENGRAVING AS PER TMC SPEC. 5566

NOTES

1	RTPA-1	A 3856
Q'TY./UNIT	MODEL USED ON	ASS'Y. NO.
SCALE 1:1	CODE A	
THE CONTENTS OF THIS DRAWING ARE THE EXCLUSIVE PROPERTY OF THE TECHNICAL MATERIEL CORP. ITS UNAUTHORIZED USE OR REPRODUCTION IN WHOLE OR IN PART IS STRICTLY FORBIDDEN.		

REF. MS 4018

REQ'D.	ITEM	PART NUMBER	DESCRIPTION	SYMBOL
F. E. EATON LIST OF MATERIAL				
MATERIAL		THE TECHNICAL MATERIEL CORP. MAMARONECK, NEW YORK		
FINISH		TITLE MARKING - PANEL, FRONT MARKING PROCESS - ENGRAVING		
UNLESS OTHERWISE SPECIFIED DIMENSIONS ARE IN INCHES AND INCLUDE CHEMICALLY APPLIED OR PLATED FINISHES		DRAWN J. LESHINSKI	DATE 2/18/65	FINAL APPROVAL
DECIMALS .X ± .05 .XX ± .01 .XXX ± .005		CHECKED JLB	DATE 2/18/65	DATE
FRACTIONS ± 1/64 ± 0° 30'		ELECT. DES. W. JORDAN	DATE 2/18/65	DATE
TOLERANCES		SHEET 1 OF 2		
		REV. LTR.		

LD1597