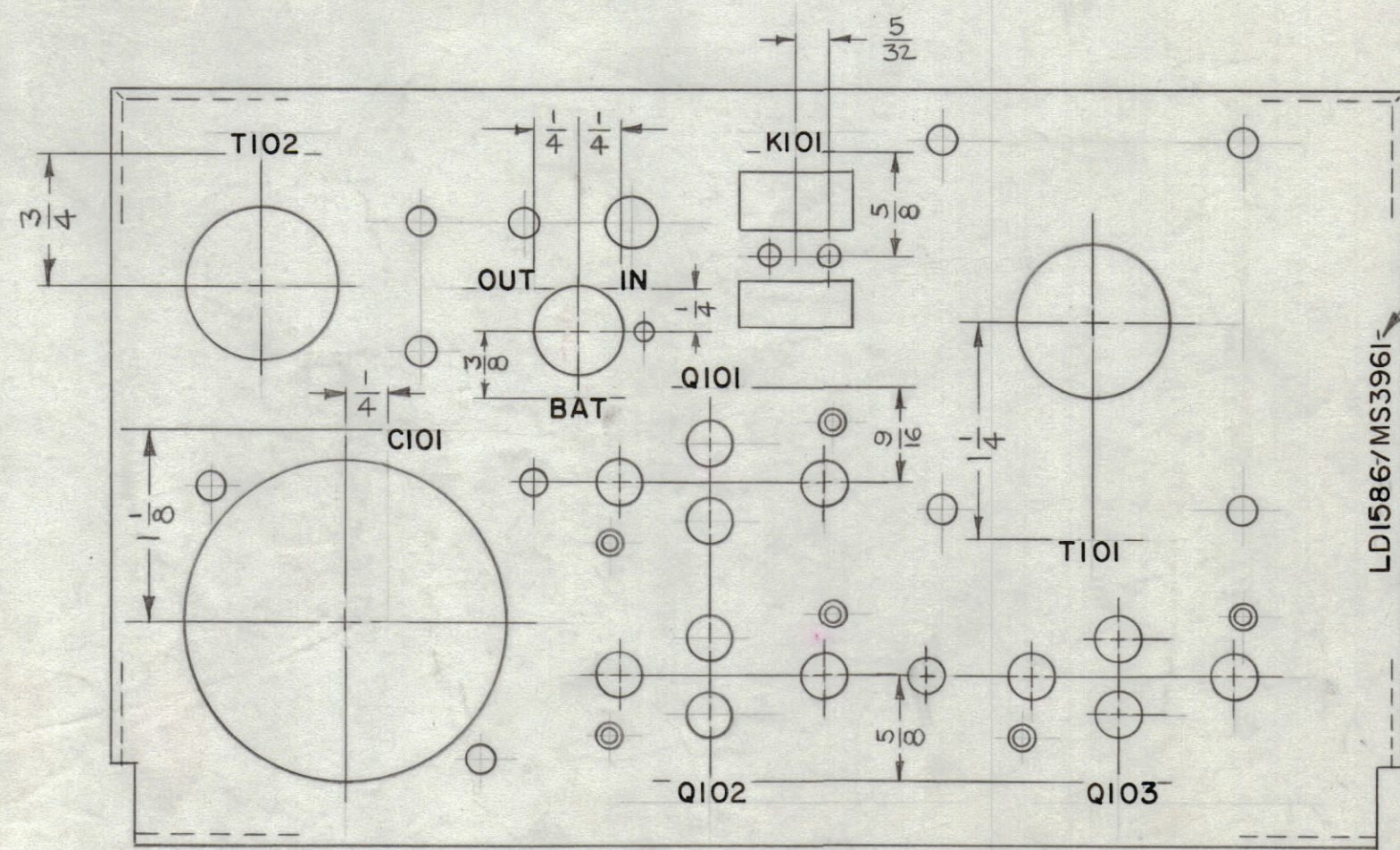
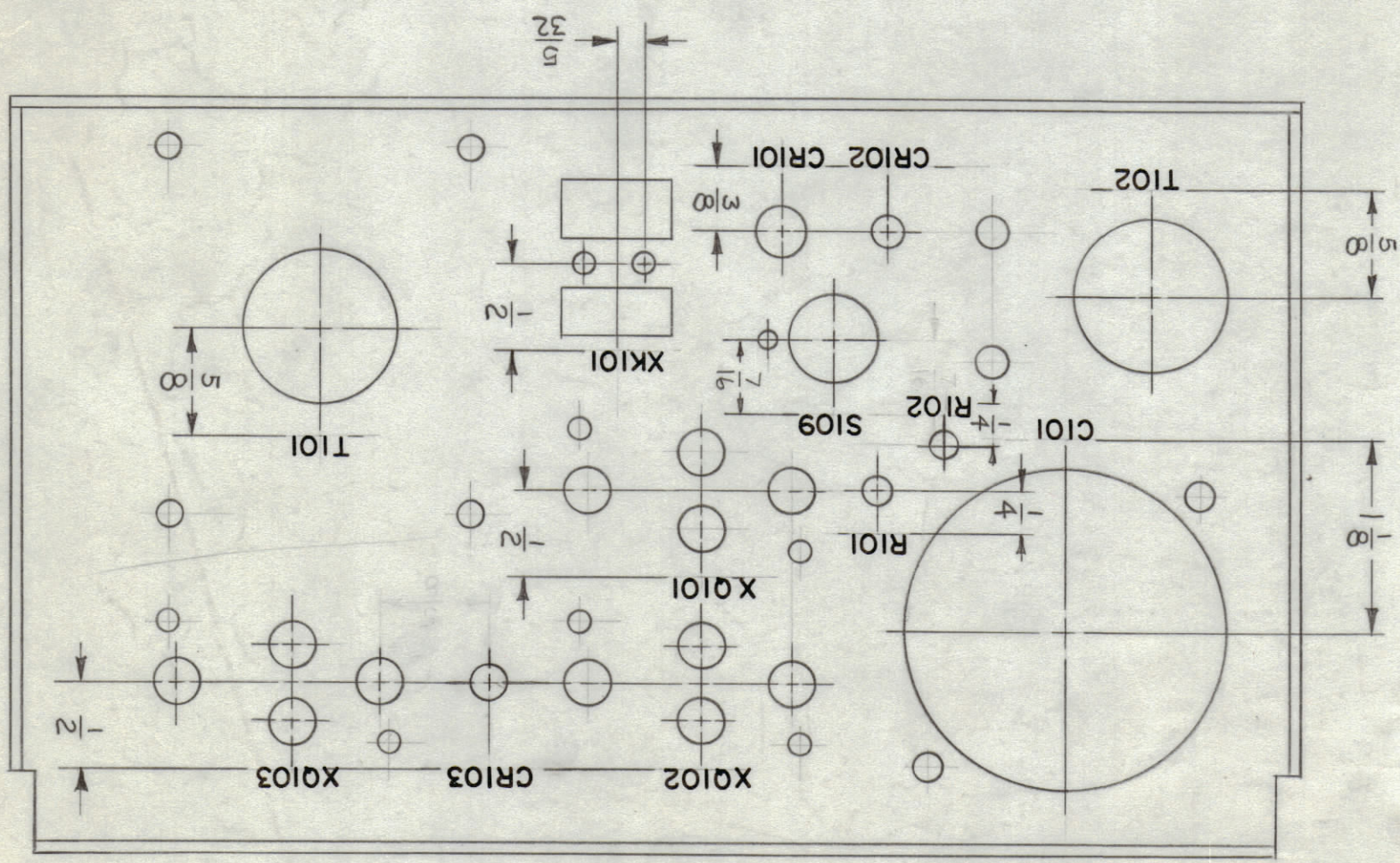
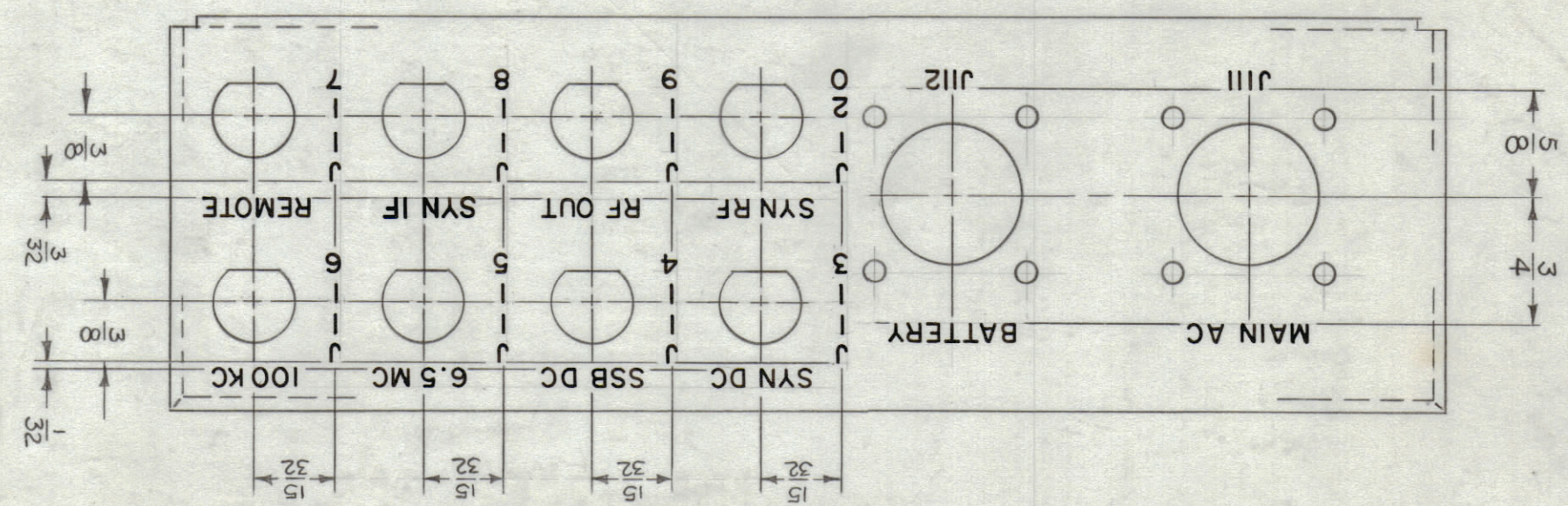
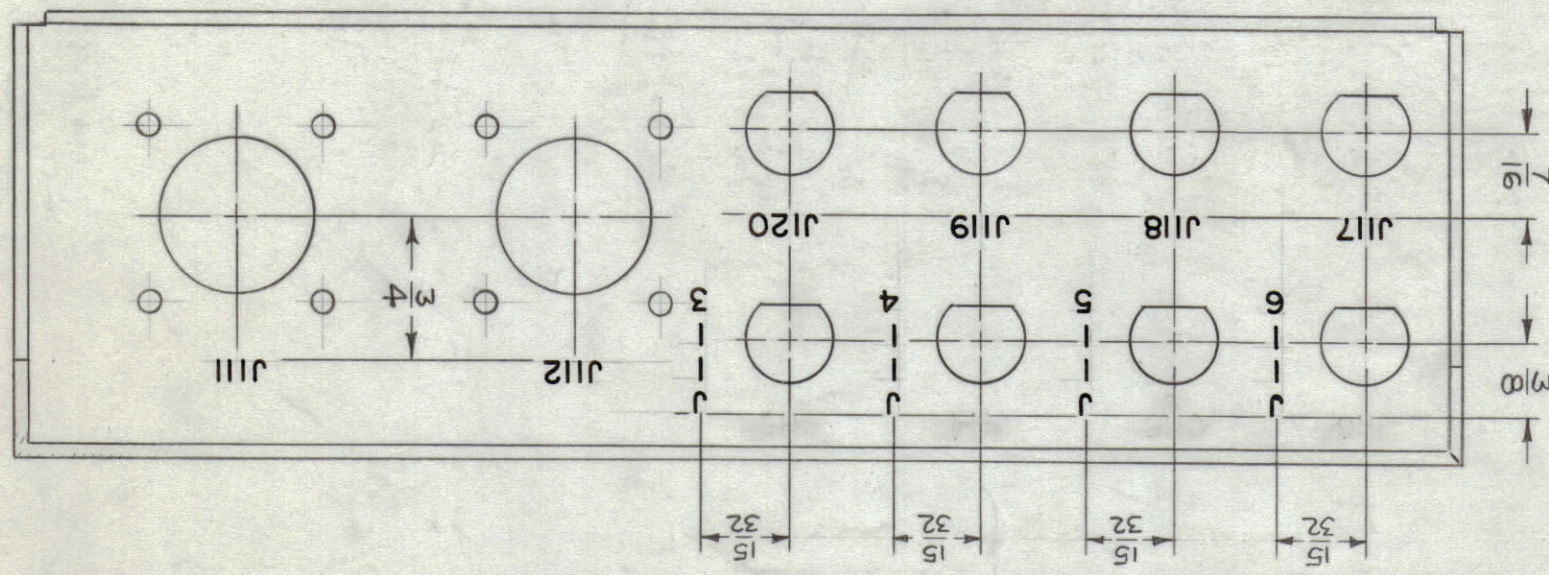


REVISIONS							
ZONE	SYM	DESCRIPTION	DATE	E.M.N. NO.	DRAFT	CHKD	APPD
-	X	EXPERIMENTAL RELEASE	7.17.64	-	WFB		
	Ø	ORIGINAL RELEASE FOR PRODUCTION	8.3.64	-	WFB		
D6	A	ON INTERIOR VIEW XK101 WAS K101	9.24.64	12450	WFB		
B	B	CR103 & LOC. DIM. ADD; 'X' PREFIXED TO Q101, 2, & 3.	2.7.65	13388	WFB		
C6	C	R102 ADDED. (INTERIOR VIEW)	3.29.65	13739	WFB		
	D	"SYN IF" WAS "5.8 MC"	6.3.68	18938	WFB		



MARK TMC PART NO. 1/8 HIGH BLACK GOTHIC, WITH LATEST REV. LETTERS.

INTERIOR VIEW

EXTERIOR VIEW

REF: MS3961

MARKING PROCESS: AS PER TMC SPECIFICATION S-727.
 LETTERING: 1/8 HIGH BLACK GOTHIC, LOCATED AS SHOWN.
 (ALL LETTER GROUPS TO BE CENTERED ON HOLES)

Q'TY./UNIT	MODEL USED ON	ASS'Y. NO.
SCALE	CODE	
	A	

REQ'D.	ITEM	PART NUMBER	DESCRIPTION	SYMBOL
	M.GELLMAN		LIST OF MATERIAL	SK3136-LD-33
MATERIAL		THE TECHNICAL MATERIEL CORP. MAMARONECK, NEW YORK		
FINISH		TITLE MARKING, BRACKET (PWR SUPPLY) MARKING METHOD AS PER TMC S-727		
UNLESS OTHERWISE SPECIFIED DIMENSIONS ARE IN INCHES AND INCLUDE CHEMICALLY APPLIED OR PLATED FINISHES		DRAWN	DATE	FINAL APPROVAL
DECIMALS .X ± .05 .XX ± .01 .XXX ± .005		CHECKED	DATE	DATE
FRACTIONS ± 1/64 ANGLES ± 0° 30'		ELECT. DES.	DATE	DATE
TOLERANCES		MECH. DES.	DATE	DATE

NOTES

LD1586

LD1586