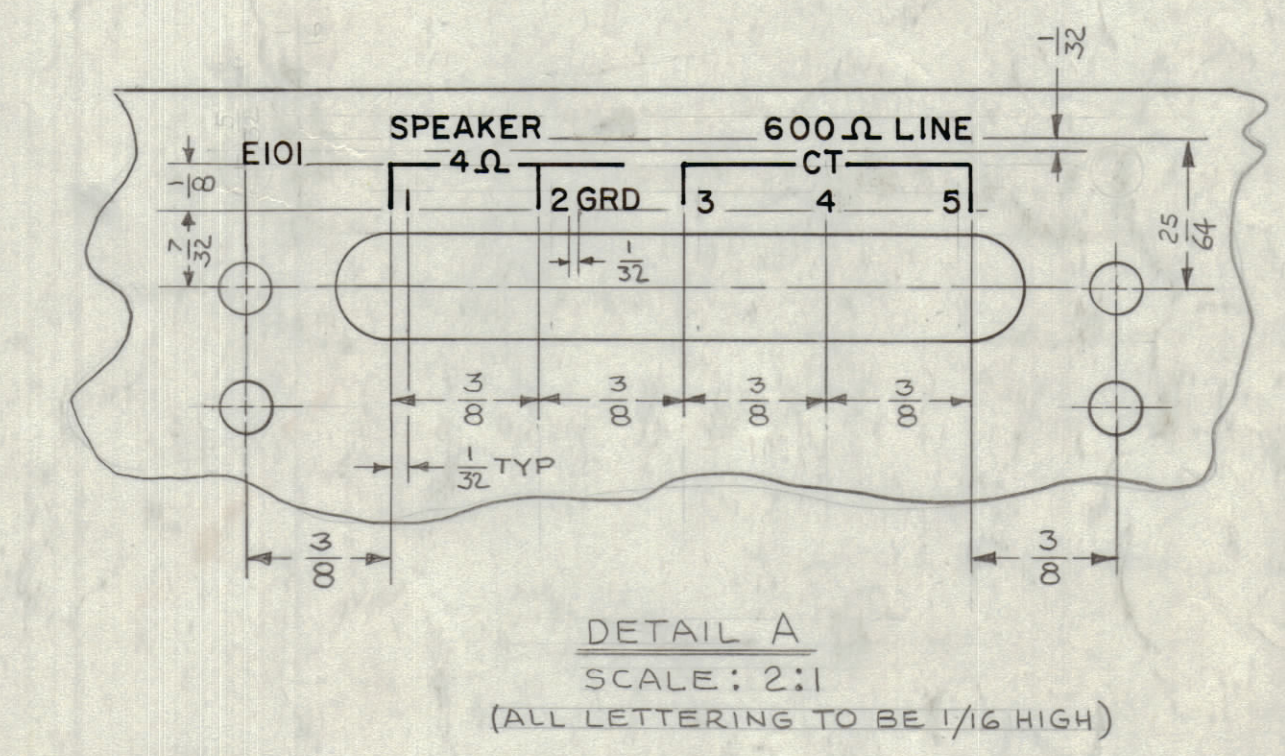
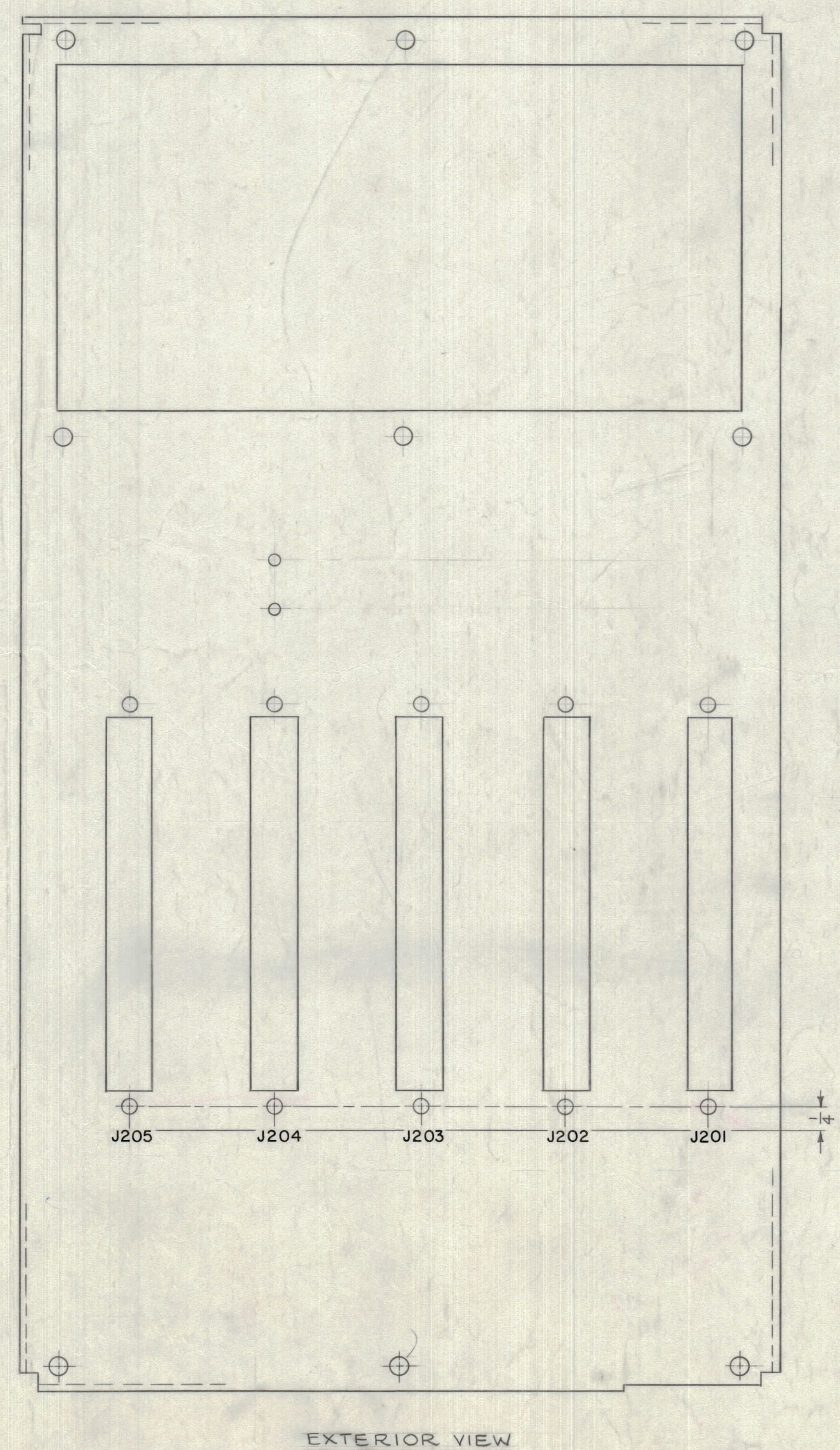
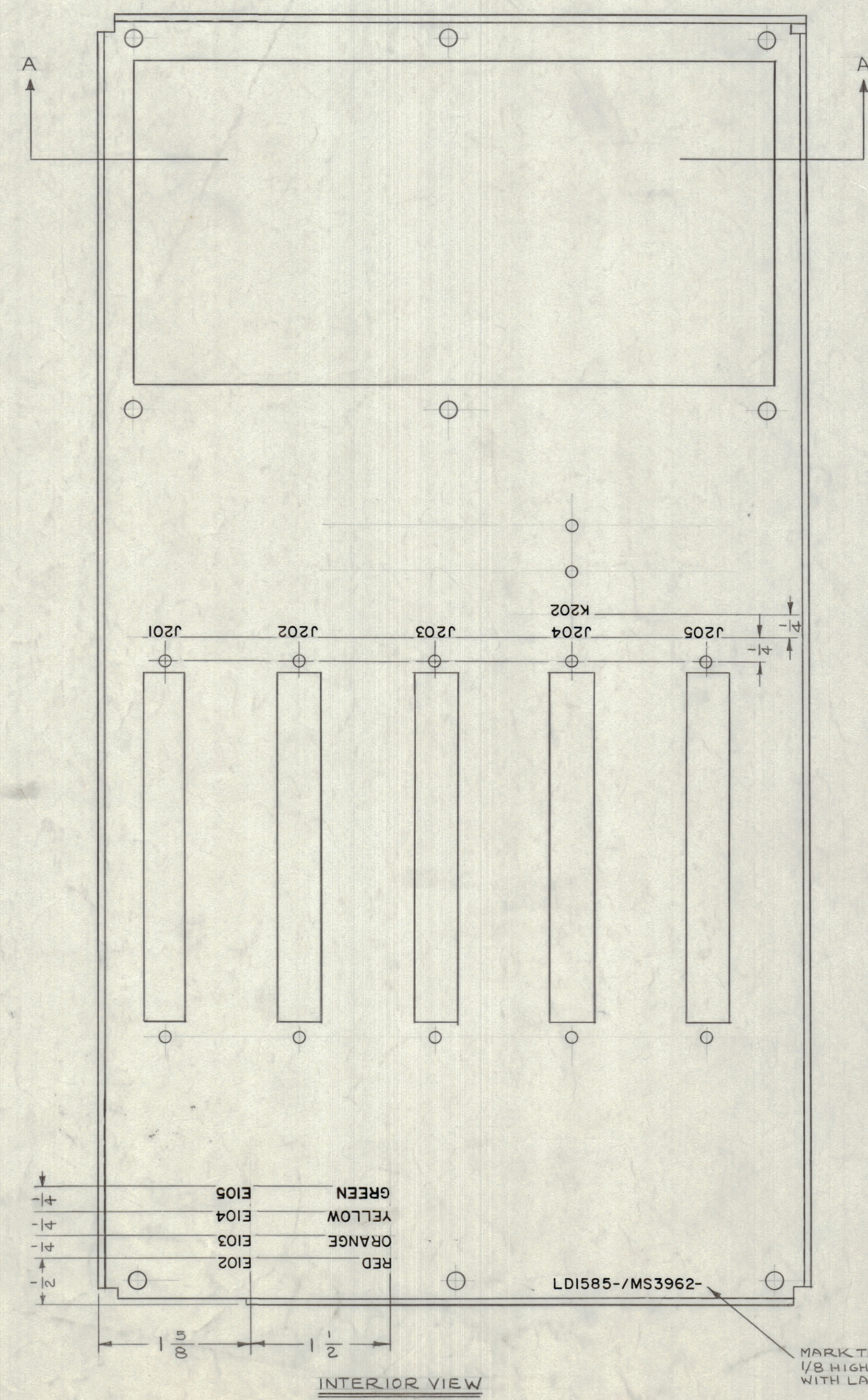
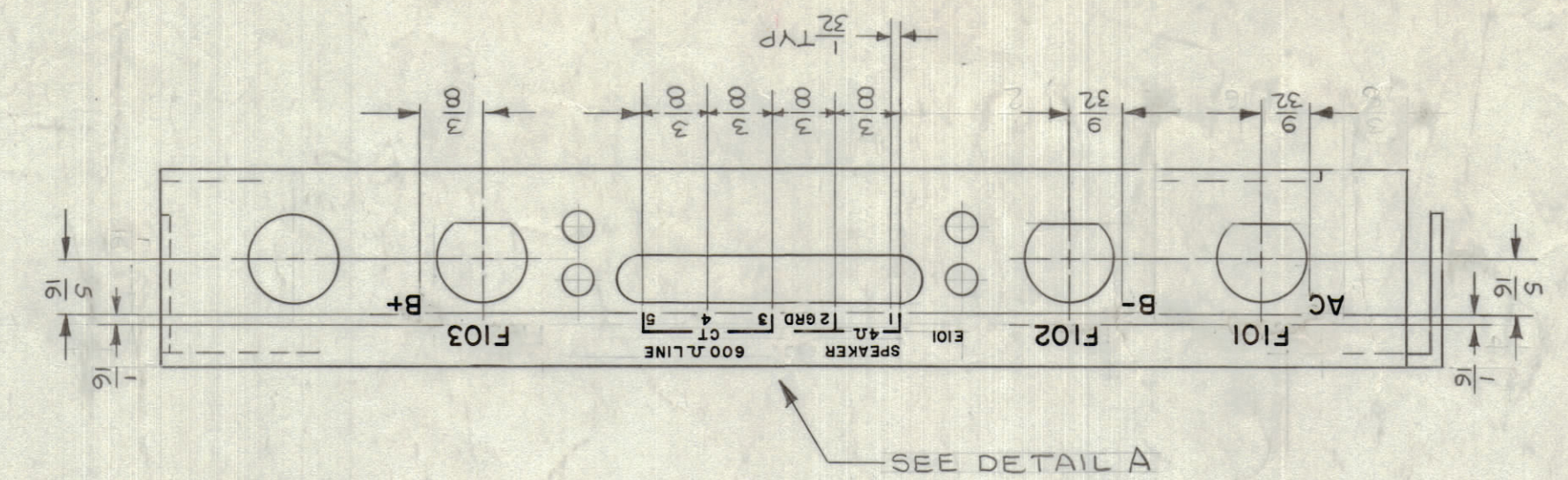
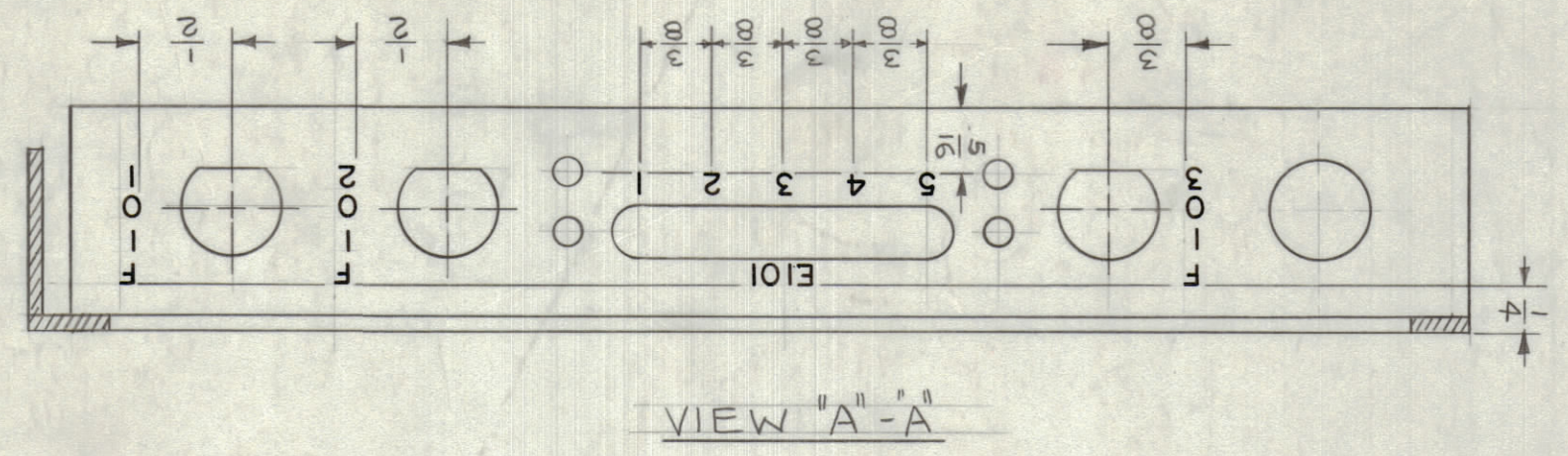


REVISIONS						
ZONE	SYM	DESCRIPTION	DATE	E.M.N. NO.	DRAFT	CHKD
X		EXPERIMENTAL RELEASE	7.15.64		ASB	
Q		ORIGINAL RELEASE FOR PRODUCTION	8.3.64		ASB	
A		ON PICT. (INTERIOR VIEW) "GREEN" E105 ADDED	10.20.64	12692	RP	ASB
B		CLERICAL CHANGE (VLRB WAS LFRA)	1.21.65		ASB	ASB



REF: MS3962

MARKING PROCESS: AS PER TMC SPECIFICATION S-727.  
 LETTERING: 1/8 HIGH BLACK GOTHIC, LOCATED AS SHOWN.

Q'TY./UNIT	MODEL USED ON	ASSY. NO.
SCALE	CODE	

REQ'D	ITEM	PART NUMBER	DESCRIPTION	SYMBOL
M. GELLMAN LIST OF MATERIAL SK3136-LD-32				
THE TECHNICAL MATERIEL CORP. MAMARONECK, NEW YORK				
TITLE: MARKING CHASSIS, MAIN MARKING METHOD, TMC S-727				
DRAWN	DATE	FINAL APPROVAL	DATE	
CHECKED	DATE			
ELECT. DES.	DATE			
MECH. DES.	DATE			
LD1585				B

NOTES

THE CONTENTS OF THIS DRAWING ARE THE EXCLUSIVE PROPERTY OF THE TECHNICAL MATERIEL CORP. ITS UNAUTHORIZED USE OR REPRODUCTION IN WHOLE OR IN PART IS STRICTLY FORBIDDEN.

UNLESS OTHERWISE SPECIFIED DIMENSIONS ARE IN INCHES AND INCLUDE CHEMICALLY APPLIED OR PLATED FINISHES

DECIMALS: .X ± .05, .XX ± .01, .XXX ± .005  
 TOLERANCES: ± 1/64, ANGLES: ± 30'

STOCK NO. 460H

LD1585 B