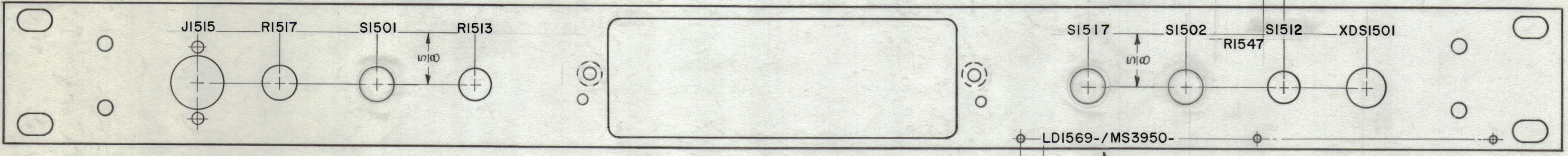


REVISIONS						
ZONE	SYM	DESCRIPTION	DATE	E.M.N. NO.	DRAFT	CHKD APPD
X		EXPER. RELEASE	8-11-64	X		
G3	X1	MARKING, SYMBOL S1517 WAS S1505	8-20-64	X1		
	Ø	ORIGINAL RELEASE FOR PRODUCTION	9-17-64	Ø		
G2	A	ON REAR VIEW S1512 WAS S1513	10-26-64	12777		

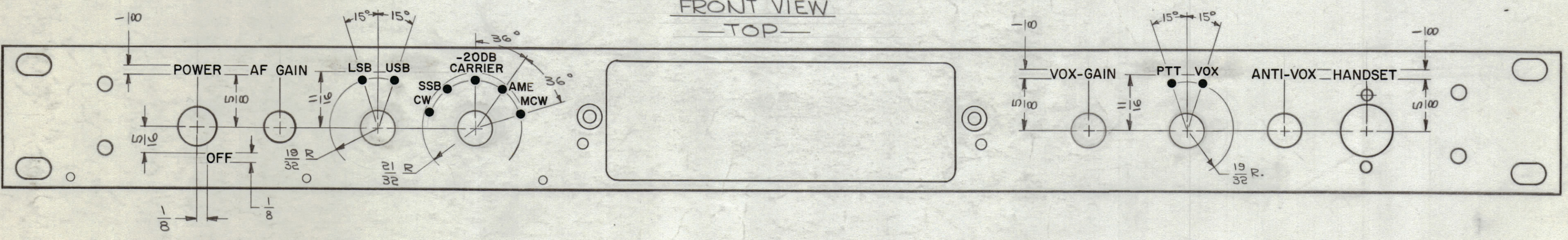
REAR VIEW
—TOP—



MARKING PROCESS: AS PER TMC SPECIFICATION S-727.
LETTERING: 1/8 HIGH BLACK GOTHIC, LOCATED AS SHOWN.
1/16 SPACING BETWEEN LETTER GROUPS.

MARK TMC PART NO. WITH LATEST REVISION LETTERS.

FRONT VIEW
—TOP—



~UNLESS OTHERWISE SPECIFIED~
1~ ALL ENGRAVING TO BE 3/32 HIGH WHITE FILLED (SEE CHART)
2~ ALL DOTS TO BE WHITE FILLED (SEE CHART)
3~ 1/16 SPACING ON LETTER GROUPS.

HEIGHT OF LETTERS	DEPTH OF STROKE	WIDTH OF STROKE
3/32	.010	.015
1/8	.010	.020
DOTS	.010	1/16 DIA.

NOTES

QTY./UNIT	MODEL USED ON	ASS'Y. NO.
SCALE 1:1	CODE A	
THE CONTENTS OF THIS DRAWING ARE THE EXCLUSIVE PROPERTY OF THE TECHNICAL MATERIEL CORP. ITS UNAUTHORIZED USE OR REPRODUCTION IN WHOLE OR IN PART IS STRICTLY FORBIDDEN.		

REF: MS3950 (4)

REQ'D.	ITEM	PART NUMBER	DESCRIPTION	SYMBOL
T. AALTONEN LIST OF MATERIAL				
MATERIAL		THE TECHNICAL MATERIEL CORP. MAMARONECK, NEW YORK		
FINISH		TITLE MARKING, PANEL, FRONT MARKING PROCESS, ENGRAVING & MARKING		
DRAWN		DATE	FINAL APPROVAL	
CHECKED		DATE	DATE	
ELECT. DES.		DATE	DATE	
MECH. DES.		DATE	DATE	
UNLESS OTHERWISE SPECIFIED DIMENSIONS ARE IN INCHES AND INCLUDE CHEMICALLY APPLIED OR PLATED FINISHES			LD1569 A	
DECIMALS .X ± .05 .XX ± .01 .XXX ± .005		FRACTIONS ± 1/64 ANGLES ± 0° 30'		REV. LTR.
SHEET			DATE	

LD1569 A