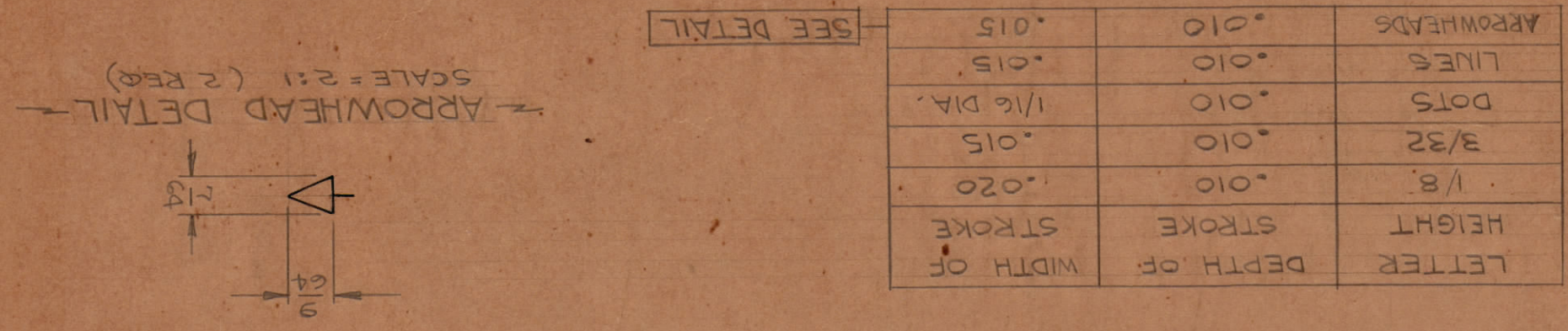
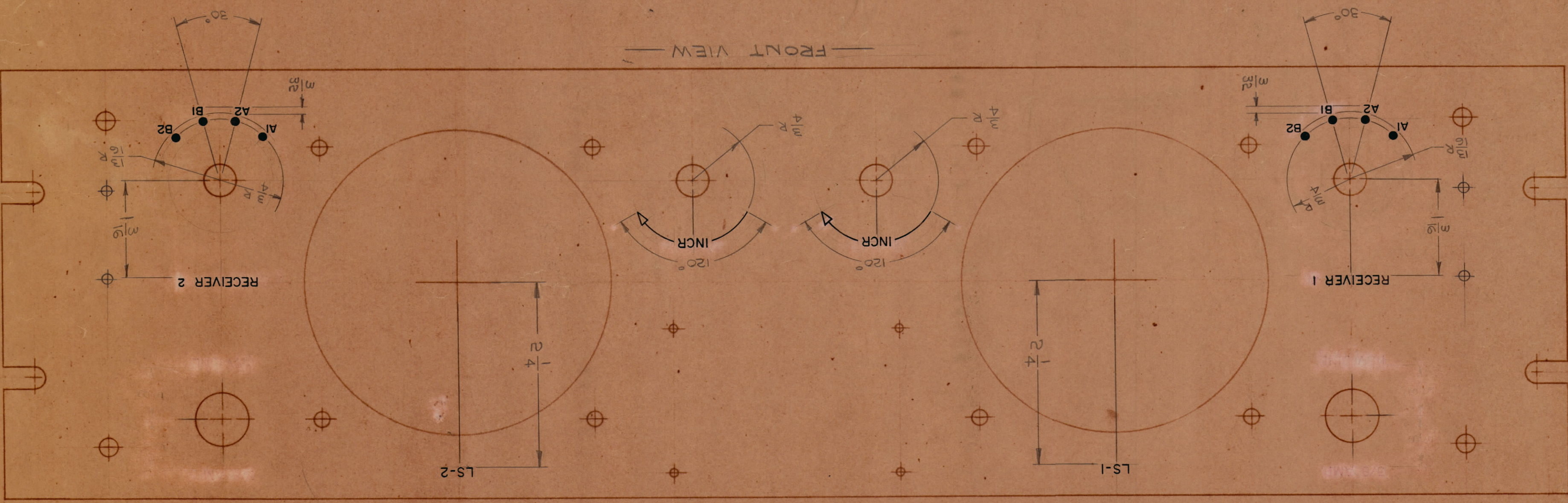


ZONE	SYM	DESCRIPTION	DATE	EM.N. NO.	DRW.	CHKD.	APPD.
	X	EXPER. RELEASE	7-23-64	X			
	Q	ORIGINAL RELEASE FOR PRODUCTION	7-23-64	Q			
	A	SEE SHEET 2 OF 2, REV "A"	3-15-64	12303	MB		
	B	RECEIVER "1" WAS RECEIVER "A", RECEIVER "2" WAS RECEIVER "B"	12-15-64	13131	JK		
F4,2	C	3/8 AMP 2" 115V LINE DELETED (2 PL)	4-2-65	13767	RF		
F4,2	D	CLERICAL CHANGE	5-13-66	CC	RME		



UNLESS OTHERWISE SPECIFIED →
 1- ALL ENGRAVING TO BE 1/8 HIGH GOTHIC, WHITE FILLED (SEE CHART).
 2- ALL LINES TO BE WHITE FILLED.
 3- ALL ARROWHEADS TO BE 1/64 x 9/64, WHITE OUTLINED FILLED.
 4- ALL LETTER GROUPS TO BE CENTERED ON HOLES.

REV. LTR.	DATE	DATE	DATE	DATE
D	7-23-64	7-23-64	7-23-64	7-23-64
DRAWN		CHECKED		DATE
MAMARONECK, NEW YORK		MAMARONECK, NEW YORK		7-23-64
THE TECHNICAL MATERIEL CORP.		THE TECHNICAL MATERIEL CORP.		7-23-64
MATERIAL		FINISH		DATE
STURMER		MARKING PROCESS: ENGRAVING		DATE
LIST OF MATERIAL		TITLE		DATE
REC'D. ITEM		PART NUMBER		DESCRIPTION
SYMBOL		SYMBOL		SYMBOL

QTY./UNIT	1
MODEL USED ON	BSP-6
ASBY. NO.	
SCALE	1:1
CODE	A

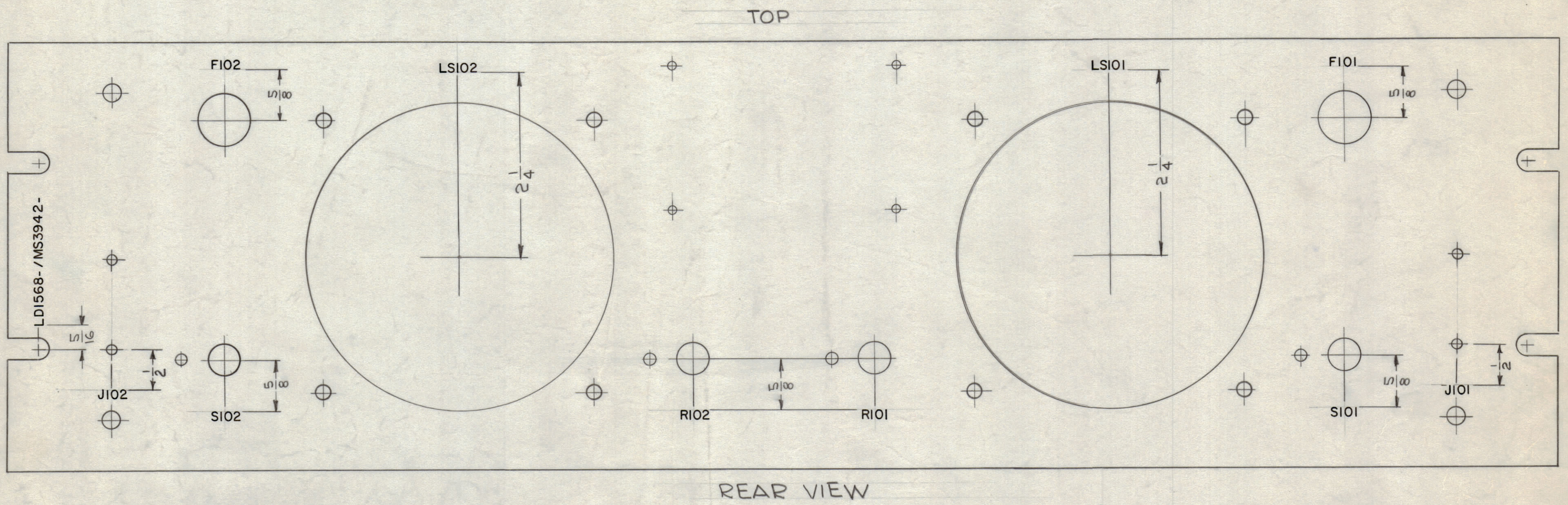
NOTES

LD1568 D

SHEET 1 OF 2

H

REVISIONS						
ZONE	SYM	DESCRIPTION	DATE	E.M.N. NO.	DRAFT	CHKD
	X	EXPER. RELEASE	7-23-64	X		
	Q	ORIGINAL RELEASE FOR PRODUCTION	7-23-64	Q		
D1,7	A	J101 & J102 LETTERING ADDED	9-15-64	12303	AB	@
	B	SEE SHEET 1 OF 2 REV. "B"	12-15-64	13131	9P	@
	C	SEE SHEET 1 OF 2 REV. "C"	4-2-65	13767	HL	@
	D	SEE SHEET 1 OF 2 REV. "D"	9-13-66	CC	RME	@



MARKING PROCESS: AS PER TMC SPECIFICATION S-727.
 LETTERING: 1/8 HIGH BLACK GOTHIC, LOCATED AS SHOWN.
 MARK TMC PART NO 1/8 HIGH BLACK GOTHIC WITH LATEST REVISION LETTERS.

REF: MS3942 (4)

REQ'D.	ITEM	PART NUMBER	DESCRIPTION	SYMBOL
STURMER LIST OF MATERIAL				
MATERIAL		THE TECHNICAL MATERIEL CORP. MAMARONECK, NEW YORK		
FINISH		TITLE MARKING, PANEL, FRONT MARKING PROCESS: PER TMC SPEC 5727		
UNLESS OTHERWISE SPECIFIED DIMENSIONS ARE IN INCHES AND INCLUDE CHEMICALLY APPLIED OR PLATED FINISHES		DRAWN 7-23-64	DATE 7-23-64	FINAL APPROVAL DATE
DECIMALS .X ± .05 .XX ± .01 .XXX ± .005		CHECKED 7-23-64	DATE 7-23-64	DATE
FRACTIONS ± 1/64 ANGLES ± 0° 30'		ELECT. DES. 7-23-64	DATE 7-23-64	DATE
TOLERANCES		MECH. DES. 7-23-64	DATE 7-23-64	DATE
			LD1568	D
			SHEET 2 OF 2	REV. LTR.

BSP-6		
Q'TY./UNIT	MODEL USED ON	ASS'Y. NO.
SCALE 1:1	CODE A	
THE CONTENTS OF THIS DRAWING ARE THE EXCLUSIVE PROPERTY OF THE TECHNICAL MATERIEL CORP. ITS UNAUTHORIZED USE OR REPRODUCTION IN WHOLE OR IN PART IS STRICTLY FORBIDDEN.		

NOTES

LD1568 D