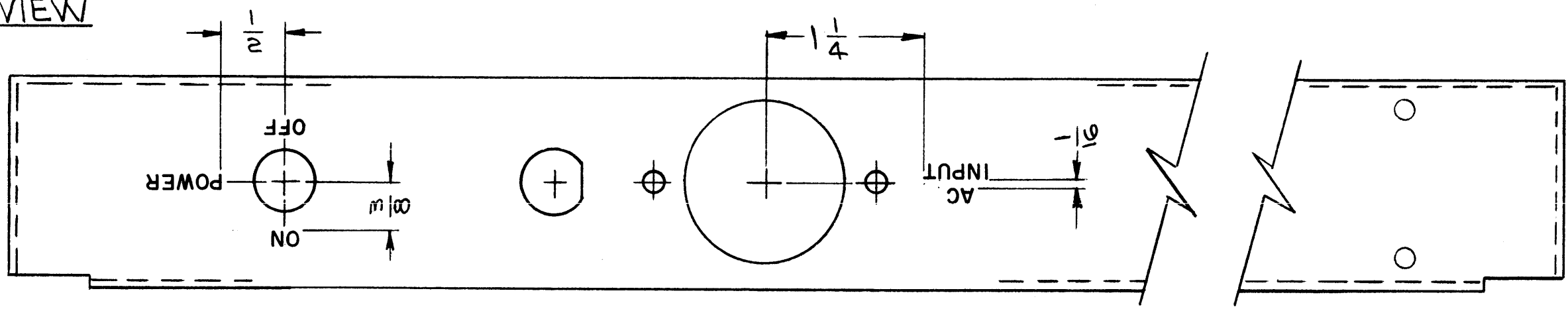


LD1563 A

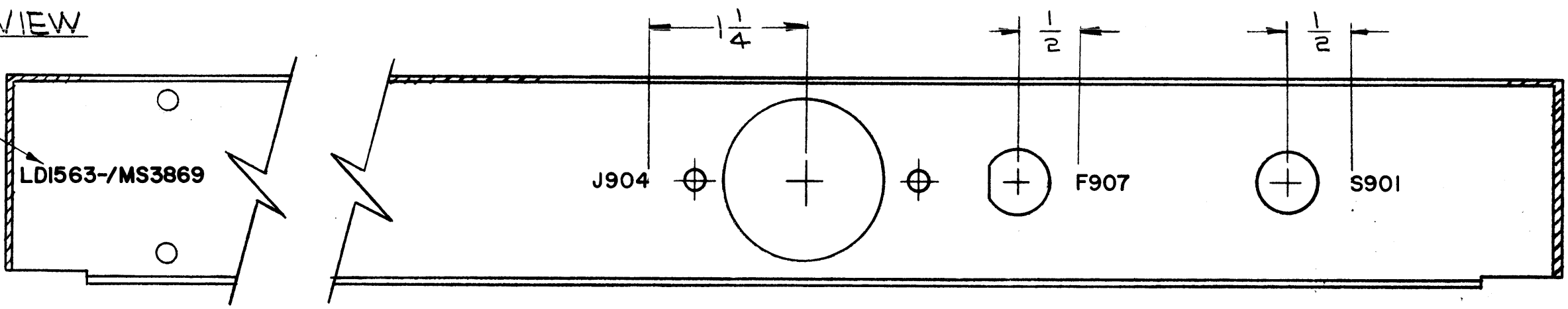
REVISIONS						
SYM	DESCRIPTION	DATE	E.M.N. NO.	DRAFT	CHKD	APFD
X	<del>EXPER. RELEASE</del>	8-10-64	X	<i>[Signature]</i>		
Ø	ORIGINAL RELEASE FOR PRODUCTION	8.20.64	+	WB		
A	ON PICT. 4 HOLES ADD. METAL STAMP NOTE RELOC.	9.28.64	12462	9.P.	@	9.24

EXTERIOR VIEW  
-TOP-



INTERIOR VIEW  
-TOP-

MARK TMC PART No WITH LATEST REVISION LETTERS.



**MARKING PROCESS: AS PER TMC SPECIFICATION S-727.**  
**LETTERING: 1/8 HIGH BLACK GOTHIC, LOCATED AS SHOWN.**

REF: MS3869 (8)

1	THRA-1	
Q'TY./UNIT	MODEL USED ON	ASS'Y. NO.
SCALE 1:1	CODE A	

THE CONTENTS OF THIS DRAWING ARE THE EXCLUSIVE PROPERTY OF THE TECHNICAL MATERIEL CORP. ITS UNAUTHORIZED USE OR REPRODUCTION IN WHOLE OR IN PART IS STRICTLY FORBIDDEN.

REQ'D.	ITEM	PART NUMBER	DESCRIPTION	SYMBOL
T. DALTONEN LIST OF MATERIAL				
MATERIAL			THE TECHNICAL MATERIEL CORP. MAMARONECK, NEW YORK	
FINISH			TITLE MARKING, CHASSIS, MAIN MARKING PROCESS, PER TMC SPEC 5727	
UNLESS OTHERWISE SPECIFIED DIMENSIONS ARE IN INCHES AND INCLUDE CHEMICALLY APPLIED OR PLATED FINISHES			DRAWN <i>[Signature]</i> 8-10-64 CHECKED <i>[Signature]</i> 8/21/64 ELECT. DES. <i>[Signature]</i> 8/21/64 MECH. DES. <i>[Signature]</i> 8/21/64	FINAL APPROVAL <i>[Signature]</i> DATE
DECIMALS .X ± .05 .XX ± .01 .XXX ± .05	TOLERANCES	FRACTIONS ± 1/64 ANGLES ± 0° 30'	LD1563	A
NOTES			SHEET	REV. LTR.