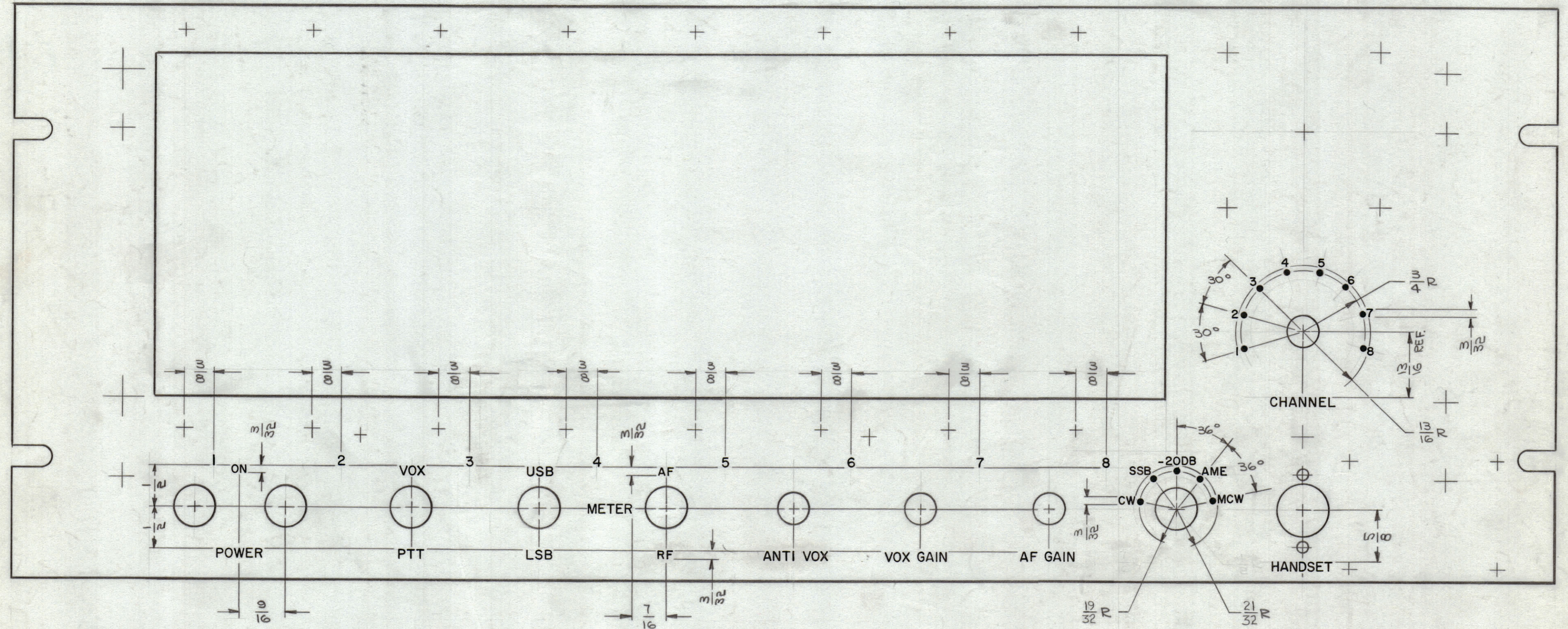


| REVISIONS | | | | | | |
|-----------|-----|---|----------|------------|--------------------|------------------------|
| ZONE | SYM | DESCRIPTION | DATE | E.M.N. NO. | DRAFT | CHKD APPD |
| - | X | EXPER. RELEASE | 8-17-64 | X | <i>[Signature]</i> | |
| | X1 | ON FUNCTION SWITCH ADDED "E" TO AM | 8-24-64 | X1 | G. Sch. POW. | |
| | Ø | ORIGINAL RELEASE FOR PRODUCTION | 9-17-64 | Ø | J.F. | |
| - | A | SEE SHEET 2 OF 2 REV. "A" | 10-22-64 | 12740 | HTB | <i>[Signature]</i> 196 |
| C2,3 | B | ON PICT. 19/32 WAS 7/16. 21/32 WAS 1/2. | 11-11-64 | 12904 | J.F. | <i>[Signature]</i> 196 |

FRONT VIEW
-TOP-



- UNLESS OTHERWISE SPECIFIED -
- 1- ALL ENGRAVING TO BE 1/8 HIGH, WHITE FILLED.
 - 2- ALL DOTS TO BE WHITE FILLED.
 - 3- ALL LETTER GROUPS TO BE CENTERED ON HOLES.

| HEIGHT OF LETTERS | DEPTH OF STROKE | WIDTH OF STROKE |
|-------------------|-----------------|-----------------|
| 3/32 | .010 | .015 |
| 1/8 | .010 | .020 |
| DOTS | .010 | 1/16 DIA. |

REF: MS3851 (4)

| | | |
|------------|---------------|------------|
| 1 | SME-1 | |
| Q'TY./UNIT | MODEL USED ON | ASS'Y. NO. |
| SCALE 1:1 | CODE A | |

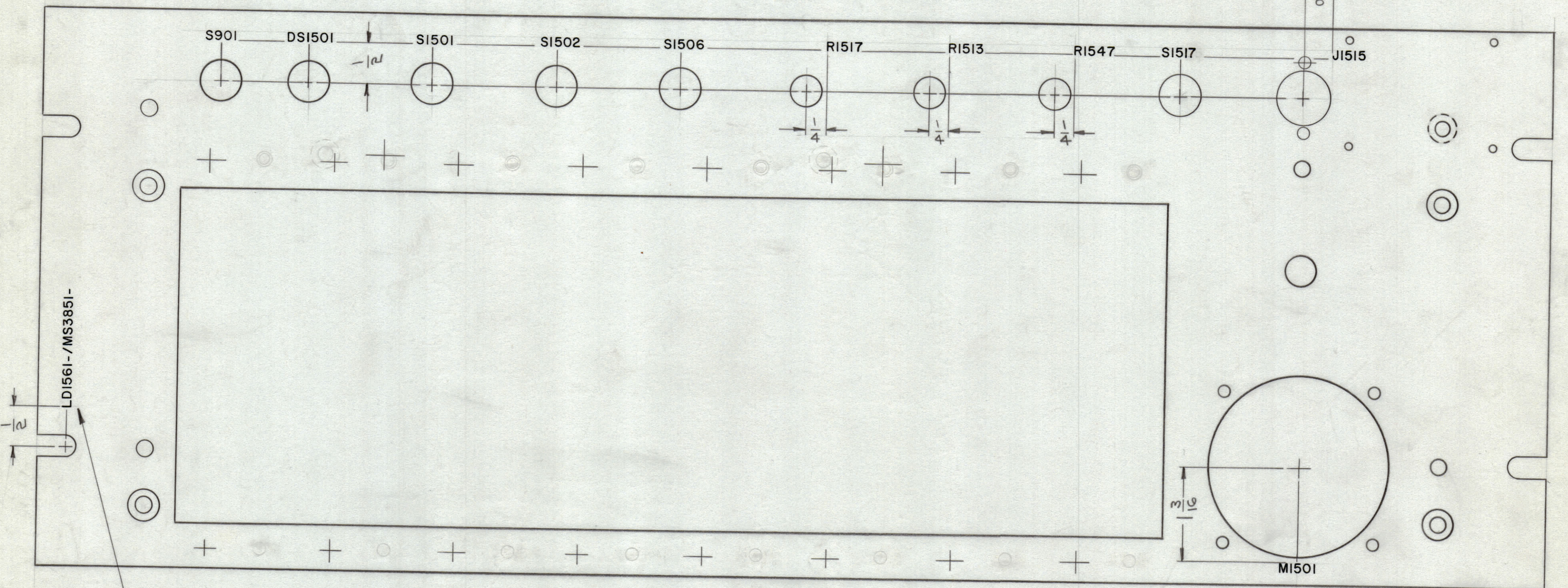
| REQ'D. | ITEM | PART NUMBER | DESCRIPTION | SYMBOL |
|---|------|--|-----------------|--------------------------------------|
| T. AALTONEN LIST OF MATERIAL | | | | |
| MATERIAL | | THE TECHNICAL MATERIEL CORP. MAMARONECK, NEW YORK | | |
| FINISH | | TITLE MARKING, PANEL, FRONT MARKING PROCESS: ENGRAVING | | |
| UNLESS OTHERWISE SPECIFIED DIMENSIONS ARE IN INCHES AND INCLUDE CHEMICALLY APPLIED OR PLATED FINISHES | | DRAWN <i>[Signature]</i> | DATE 8-17-64 | FINAL APPROVAL <i>[Signature]</i> |
| DECIMALS .X ± .05 .XX ± .01 .XXX ± .005 | | CHECKED <i>[Signature]</i> | DATE 9-17-64 | |
| FRACTIONS ± 1/64 ANGLES ± 0° 30' | | ELECT. DES. <i>[Signature]</i> | DATE 9/17/64 | |
| TOLERANCES | | MECH. DES. | DATE | |
| | | | | |
| SHEET 1 OF 2 | | | | REV. LTR. B |

NOTES

THE CONTENTS OF THIS DRAWING ARE THE EXCLUSIVE PROPERTY OF THE TECHNICAL MATERIEL CORP. ITS UNAUTHORIZED USE OR REPRODUCTION IN WHOLE OR IN PART IS STRICTLY FORBIDDEN.

| REVISIONS | | | | | | |
|-----------|-----|---------------------------------|----------|------------|--------------------|--------------------|
| ZONE | SYM | DESCRIPTION | DATE | E.M.N. NO. | DRAFT | CHKD APPD |
| # | X | EXPER. RELEASE | 8-13-64 | X | <i>[Signature]</i> | |
| | Ø | ORIGINAL RELEASE FOR PRODUCTION | 9-17-64 | Ø | <i>[Signature]</i> | |
| G2 | A | SI517 WAS SI505 | 10-22-64 | 12740 | <i>[Signature]</i> | <i>[Signature]</i> |
| # | B | SEE SHEET 1 OF 2 REV. "B" | 11-11-64 | 12904 | <i>[Signature]</i> | <i>[Signature]</i> |

— REAR VIEW —



— TOP —

MARK TMC PART NO WITH LATEST REVISION LETTERS.

REF: MS3851 (4)

MARKING PROCESS: AS PER TMC SPECIFICATION S-727.
 LETTERING: 1/8 HIGH BLACK GOTHIC, LOCATED AS SHOWN.

NOTES

| | | |
|---|---------------|------------|
| 1 | SME-1 | |
| Q'TY./UNIT | MODEL USED ON | ASS'Y. NO. |
| SCALE 1:1 | CODE A | |
| THE CONTENTS OF THIS DRAWING ARE THE EXCLUSIVE PROPERTY OF THE TECHNICAL MATERIEL CORP. ITS UNAUTHORIZED USE OR REPRODUCTION IN WHOLE OR IN PART IS STRICTLY FORBIDDEN. | | |

| REQ'D. | ITEM | PART NUMBER | DESCRIPTION | SYMBOL |
|---|------|--|--------------|-----------------------------------|
| T. AALTONEN LIST OF MATERIAL | | | | |
| MATERIAL | | THE TECHNICAL MATERIEL CORP. MAMARONECK, NEW YORK | | |
| FINISH | | TITLE MARKING, PANEL, FRONT MARKING PROCESS: PER TMC SPEC 5727 | | |
| UNLESS OTHERWISE SPECIFIED DIMENSIONS ARE IN INCHES AND INCLUDE CHEMICALLY APPLIED OR PLATED FINISHES | | DRAWN <i>[Signature]</i> | DATE 8-13-64 | FINAL APPROVAL <i>[Signature]</i> |
| DECIMALS .X ± .05 .XX ± .01 .XXX ± .005 | | CHECKED <i>[Signature]</i> | DATE 9-17-64 | DATE |
| FRACTIONS ± 1/64 ANGLES ± 0° 30' | | ELECT. DES. <i>[Signature]</i> | DATE 9-17-64 | DATE |
| TOLERANCES | | MECH. DES. | DATE | DATE |
| SHEET 2 OF 2 | | | | REV. LTR. B |

LDI561 B