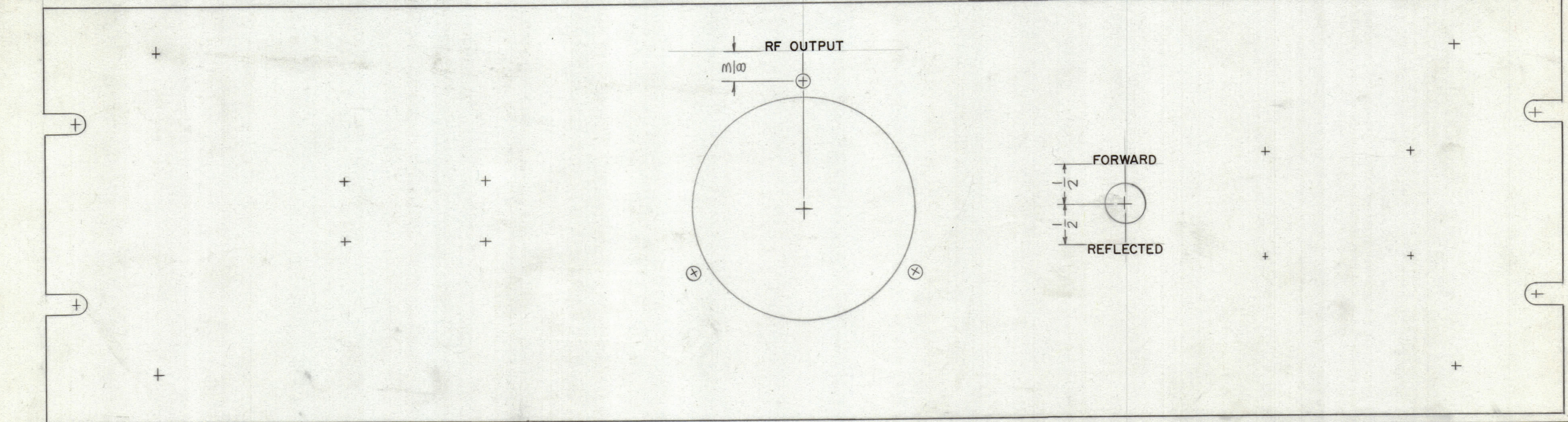
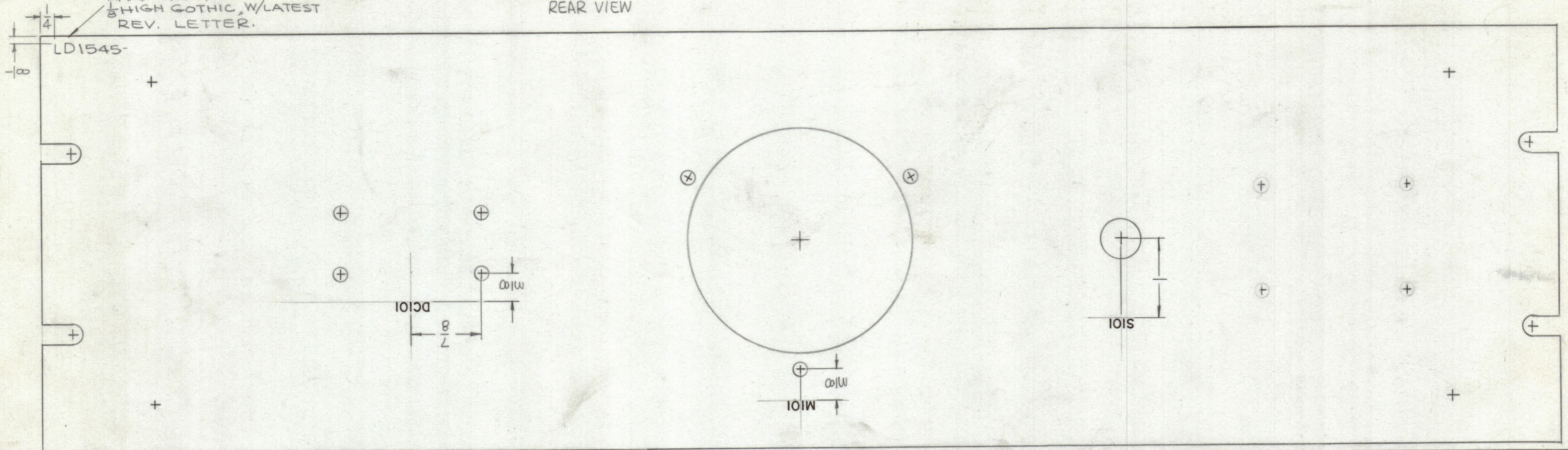


MARKING PROCESS: AS PER TMC SPECIFICATION S-727.  
 LETTERING: 1/8 HIGH BLACK GOTHIC, LOCATED AS SHOWN.

REVISIONS							
ZONE	LTR	DESCRIPTION	DATE	E.M.N.NO	DRAFT	CHKD	APPD
	X	EXP RELEASE	1-23-67				
		ORIGINAL RELEASE FOR PRODUCTION	3-28-67				

MARKING REAR VIEW

MARK TMC P/N  
 1/8 HIGH GOTHIC, W/LATEST  
 REV. LETTER.



UNLESS OTHERWISE SPECIFIED:  
 - ALL ENGRAVING TO BE ACCORDING WITH TMC SPEC. 5566.  
 - ALL ENGRAVING TO BE CENTERED ON HOLES.  
 - ALL ENGRAVING TO BE 1/8 HIGH GOTHIC WHITE FILLED.

ENGRAVING FRONT VIEW

REF. MS 6077

UNLESS OTHERWISE SPECIFIED DIMENSIONS ARE IN INCHES AND INCLUDE CHEMICALLY APPLIED OR PLATED FINISHES

TOLERANCES ON  
 DECIMALS .X ± .05  
 .XX ± .01  
 .XXX ± .005  
 FRACTIONS ± 1/64  
 ANGLES ± 0° -30'

QTY. REQ.	ITEM	PART NO.	DESCRIPTION	SYMBOL
F. BUDETTI LIST OF MATERIAL				
THE TECHNICAL MATERIEL CORP. MAMARONECK, NEW YORK				
MARKING, PANEL, FRONT MARKING PROCESS, ENGRAVING				
MATERIAL		SIZE CODE IDENT. NO. DWG NO.		ISSUE
FINISH		C 82679 LD1545		Ø
SCALE 1:1			SHEET	OF

1	SWRA-1K	ASS'Y NO.
QTY / UNIT	MODEL USED ON	
APPLICATION		
S401-451	CODE A	S401-
NOTICE TO PERSONS RECEIVING THIS DRAWING		
THE TECHNICAL MATERIEL CORPORATION claims proprietary right in the material disclosed hereon. This drawing is issued in confidence for engineering information only and may not be reproduced or used to manufacture anything shown hereon without permission from THE TECHNICAL MATERIEL CORPORATION to the user. This drawing is loaned for mutual assistance and is subject to recall at any time.		

HEIGHT OF LETTER	DEPTH OF STROKE	WIDTH OF STROKE
1/8	.010	.020