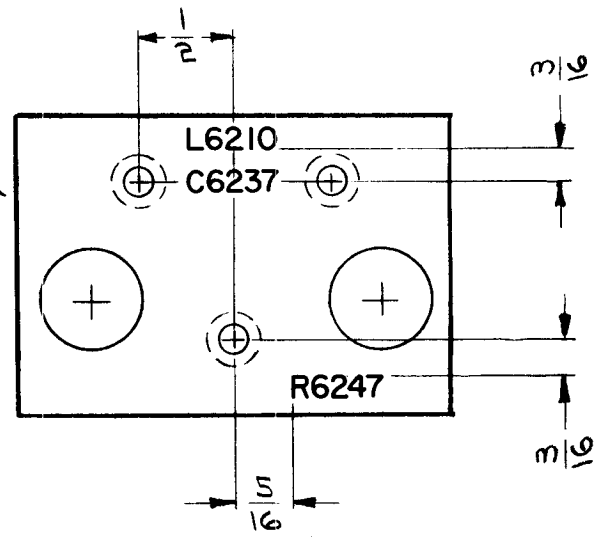


REQ. PER UNIT	USED ON			LD1543	Ø
	MODEL	ASS'Y. NO.	DATE		
1	SBS-7	A2888	5-18-64		

MARK TMC PART NO.
3/32 HIGH BLACK
GOTHIC, ON REAR
WITH LATEST REVISION
LETTERS.
(LD1534- /MS3793-)



MARKING PROCESS: AS PER TMC SPECIFICATION S-727.

LETTERING: 1/8 HIGH BLACK GOTHIC, LOCATED AS SHOWN.

REF: MS3793 (1)

SYM	DESCRIPTION	DATE	CH. NO.	DRAFTS	CHECKER	ENG. APP.	REQ. ITEM	PART NO.	O. POSE	DESCRIPTION	SYMBOL	
Ø	ORIGINAL RELEASE FOR PRODUCTION	9-16-64	Ø	92			—A—		THE TECHNICAL MATERIEL CORP. MAMARONECK, NEW YORK			
X	EXPER. RELEASE	5-18-64	1	92			—A—		MARKING, PLATE, MOUNTING, COMPONENT MARKING PROCESS PER TMC SPEC S-727			
	UNLESS OTHERWISE SPECIFIED DIMENSIONS ARE IN INCHES AND INCLUDE CHEMICALLY APPLIED OR PLATED FINISHES	SCALE	1:1				—A—	—A—	By: <i>[Signature]</i>	<i>[Signature]</i>	<i>[Signature]</i>	
	DECIMALS .X ± .05 .XX ± .01 .XXX ± .005	FRACTIONS ± 1/64 ANGLES ± 0° 30'	CODE A					TYPE & TEMPER	HEAT TREAT. SPEC.	DRAWN	CHECKED	FINAL APPROVAL
	TOLERANCES							FINISH & SPEC. NO.		ELEC. DES. APP.	MECH. DES. APP.	LD1543 Ø

[Handwritten signature]