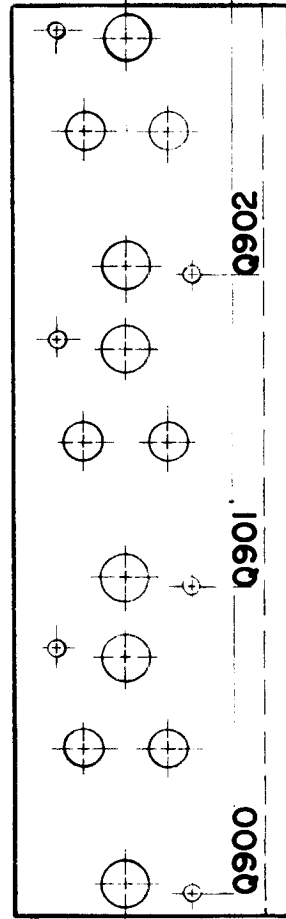


REQ. PER UNIT	USED ON		
	MODEL	ASS'Y. NO.	DATE
1	STR-1A		5-18-64
1	STE		5-18-64

LD1541 Ø



MARK TMC NO. WITH LATEST REVISION LETTERS.

MARKING PROCESS: AS PER TMC SPECIFICATION S-727.

LETTERING: 1/8 HIGH BLACK GOTHIC, LOCATED AS SHOWN.

REF-TMC DWG MS3816

REQ.	ITEM	PART NO.	T. AALTONEN	DESCRIPTION	SYMBOL	
Ø	ORIGINAL RELEASE FOR PRODUCTION	9-24-64	Ø	J.L.		
X	EXPERIMENTAL RELEASE	5-18-64	#	G.D.L.		
SYM	DESCRIPTION	DATE	CH. NO.	DRAFTS	CHECKER	ENG. APP.
UNLESS OTHERWISE SPECIFIED DIMENSIONS ARE IN INCHES AND INCLUDE CHEMICALLY APPLIED OR PLATED FINISHES		SCALE		1:1		
DECIMALS	FRACTIONS	CODE				
.X ± .05	± 1/64	A				
.XX ± .01	ANGLES					
.XXX ± .005	± 0° 30'					
TOLERANCES						
STOCK SIZE		THE TECHNICAL MATERIEL CORP. MAMARONECK. NEW YORK				
MATERIAL		MARKING, BRKT MTG. HEAT SINK				
TYPE & TEMPER		MARKING METHOD: AS PER TMC SPEC. S727				
HEAT TREAT. SPEC.		John C Biele <i>J.C.B.</i>				
FINISH & SPEC. NO.		DRAWN		CHECKED		FINAL APPROVAL
		<i>J.R.G.</i>		<i>KTC</i>		LD-1541 Ø
		ELEC. DES. APP.		MECH. DES. APP.		