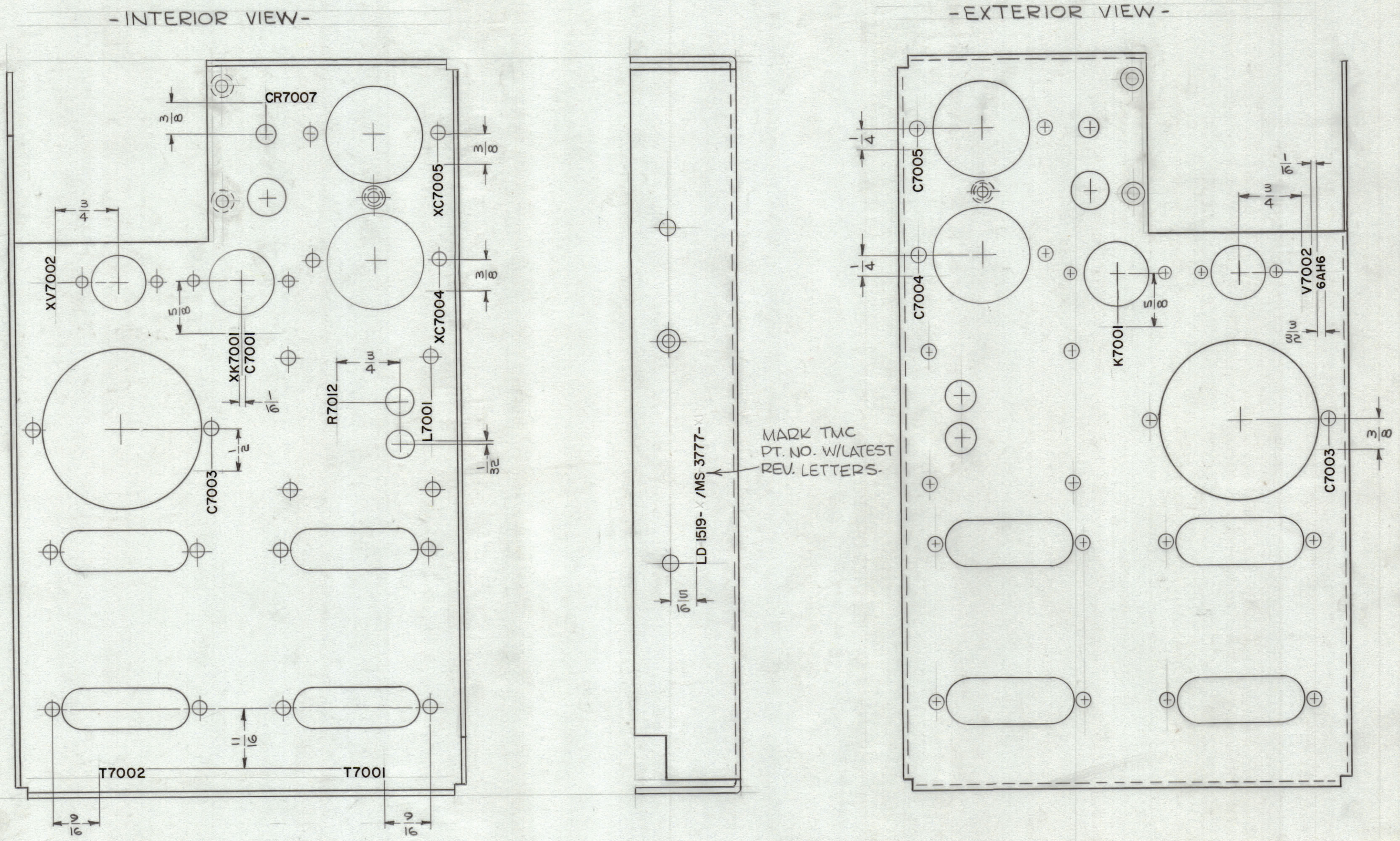


REVISIONS					
ZONE	SYM	DESCRIPTION	DATE	E.M.N. NO.	APPD
	X	EXPER. RELEASE	4-20-64	1	<i>[Signature]</i>
E5,6	X1	XK7001 WAS K7001; XC7004 WAS C7004 XC7005 WAS C7005 ON INTERIOR VIEW	5-19-64	e	<i>[Signature]</i>
	Ø	ORIGINAL RELEASE FOR PRODUCTION	11-65	Ø	<i>[Signature]</i>



LD 1519

REF: MS 3777 (4)

UNLESS OTHERWISE SPECIFIED:
 MARKING PROCESS: AS PER TMC SPECIFICATION S-727.
 LETTERING: 1/8 HIGH BLACK GOTHIC, LOCATED AS SHOWN.
 MARK TMC PART NO. WITH LATEST REVISION LETTERS, 1/8 HIGH BLACK GOTHIC.

1	SBS-7	A2880
QTY./UNIT	MODEL USED ON	ASS'Y. NO.
SCALE	CODE	
1:1	A	
THE CONTENTS OF THIS DRAWING ARE THE EXCLUSIVE PROPERTY OF THE TECHNICAL MATERIEL CORP. ITS UNAUTHORIZED USE OR REPRODUCTION IN WHOLE OR IN PART IS STRICTLY FORBIDDEN.		

REQ'D.	ITEM	PART NUMBER	DESCRIPTION	SYMBOL
O. POSE LIST OF MATERIAL				
MATERIAL		THE TECHNICAL MATERIEL CORP. MAMARONECK, NEW YORK		
FINISH		TITLE MARKING, CHASSIS, ELECTRICAL, EQUIP.-REGULATOR MARKING PROCESS - PER TMC SPEC S-727		
UNLESS OTHERWISE SPECIFIED DIMENSIONS ARE IN INCHES AND INCLUDE CHEMICALLY APPLIED OR PLATED FINISHES		DRAWN <i>[Signature]</i> DATE 4-20-64 CHECKED <i>[Signature]</i> DATE 10/26/65 ELECT. DES. <i>[Signature]</i> DATE 10/29/65 MECH. DES. <i>[Signature]</i> DATE 10/21/65	FINAL APPROVAL <i>[Signature]</i> DATE 10/21/65 LD 1519	DATE 10/21/65 SHEET 1
DECIMALS	TOLERANCES	FRACTIONS	REV. LTR.	
.X ± .05 .XX ± .01 .XXX ± .005		± 1/64 ANGLES ± 0° 30'		

NOTES