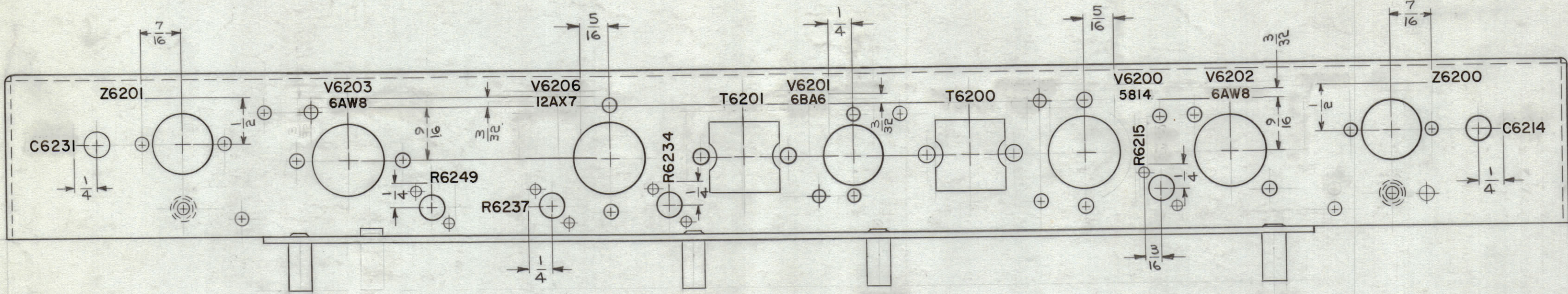
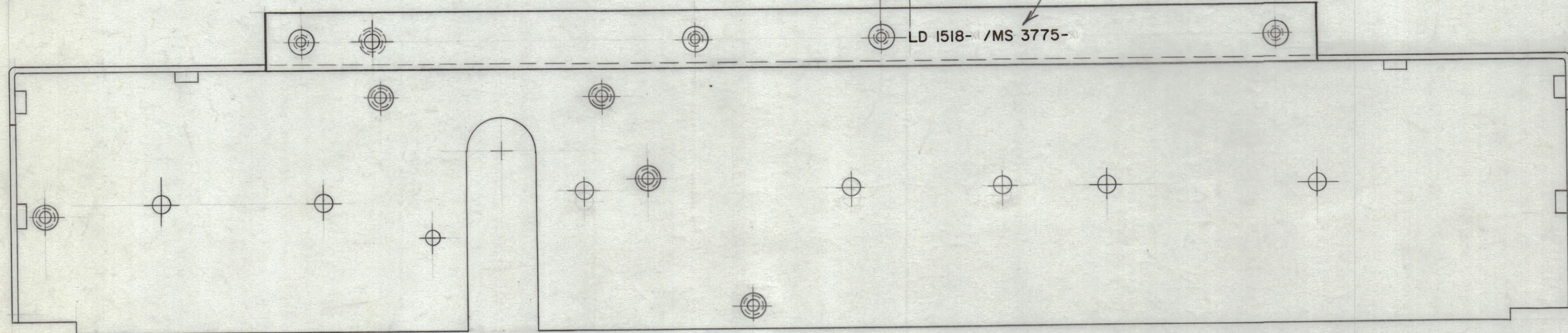


REVISIONS					
ZONE	SYM	DESCRIPTION	DATE	E.M.N. NO.	APPD
	X	EXPER. RELEASE	4-17-64	1	
	X1	PICTORIAL UPDATED PER MS-3775-X1 CHANGE	4-21-64	2	
	X2	PICTORIAL UPDATED PER MS-3775-X2 CHANGE	7-8-64	3	
	X3	5814 ON V6200 VAS 634	10-27-65		
	Ø	ORIGINAL RELEASE FOR PRODUCTION	11-3-65		

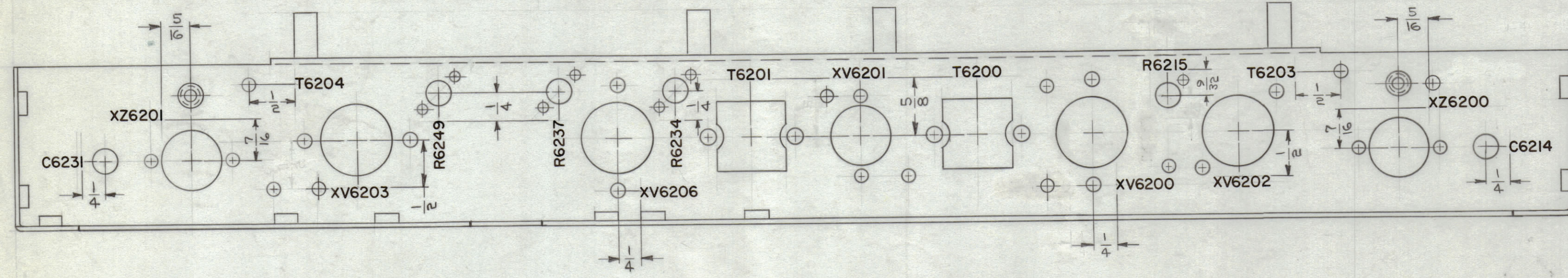


EXTERIOR VIEW

MARK TMC PART NO. W/LATEST REV. LETTERS.



LD 1518 - /MS 3775-



INTERIOR VIEW

UNLESS OTHERWISE SPECIFIED:
 MARKING PROCESS: AS PER TMC SPECIFICATION S-727.
 LETTERING: 1/8 HIGH BLACK GOTHIC, LOCATED AS SHOWN.
 1/16" SPACING BETWEEN ALL LETTER GROUPS.
 MARK TMC PART NO. WITH LATEST REVISION LETTERS
 1/8 HIGH BLACK GOTHIC.

REF: MS 3775 (8)

1	SBS-7	A2873
Q'TY./UNIT	MODEL USED ON	ASS'Y. NO.
SCALE	CODE	
1:1	A	

REQ'D.	ITEM	PART NUMBER	DESCRIPTION	SYMBOL
O. POSE LIST OF MATERIAL				
MATERIAL		THE TECHNICAL MATERIEL CORP. MAMARONECK, NEW YORK		
FINISH		TITLE MARKING, CHASSIS, ELECTRICAL, EQUIP.- CONVERTER MARKING PROCESS - PER TMC SPEC. S-727		
UNLESS OTHERWISE SPECIFIED DIMENSIONS ARE IN INCHES AND INCLUDE CHEMICALLY APPLIED OR PLATED FINISHES		DRAWN CHECKED ELECT. DES. MECH. DES.	DATE DATE DATE DATE	FINAL APPROVAL DATE SHEET
DECIMALS .X ± .05 .XX ± .01 .XXX ± .005	TOLERANCES	FRACTIONS ± 1/64 ANGLES ± 0° 30'	11/3/65	LD 1518

NOTES

THE CONTENTS OF THIS DRAWING ARE THE EXCLUSIVE PROPERTY OF THE TECHNICAL MATERIEL CORP. ITS UNAUTHORIZED USE OR REPRODUCTION IN WHOLE OR IN PART IS STRICTLY FORBIDDEN.

LD 1518