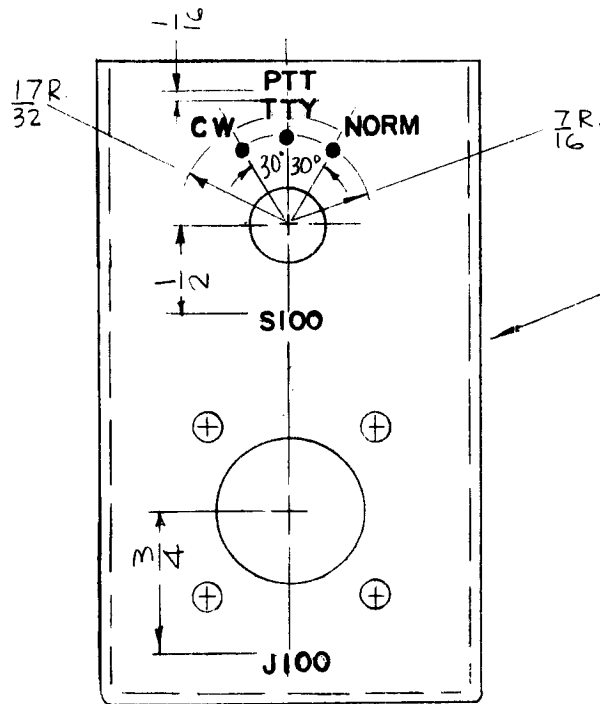


REQ. PER UNIT	USED ON		
	MODEL	ASS'Y. NO.	DATE
1	PS-4A	A 4548	11-18-66
1	KIT-320	A 4548	11-18-66

LD1509

Ø



MARK TMC P/N (LD1509-)  
 1/8 HIGH GOTHIC  
 W/LATEST REV.  
 LETTER.

MARKING PROCESS: AS PER TMC SPECIFICATION S-727.  
 DOTS: 1/16 DIA. BLACK  
 LETTERING: 3/32 HIGH BLACK GOTHIC, LOCATED AS SHOWN.

REF: MS3769-

REQ.	ITEM	PART NO.	F. BUDETTI DESCRIPTION			SYMBOL
Ø	ORIGINAL RELEASE FOR PRODUCTION	3/23/67	RME	THE TECHNICAL MATERIEL CORP. MAMARONECK. NEW YORK		
XI	COMPLETELY REVISED	1-11-67		MARKING, BRKT, MTG SWITCH		
X	EXP. RELEASE	11-18-66		AS PER TMC SPEC. S727		
SYM	DESCRIPTION	DATE	CH. NO.	DRAFTS	CHECKER	ENG. APP.
UNLESS OTHERWISE SPECIFIED DIMENSIONS ARE IN INCHES AND INCLUDE CHEMICALLY APPLIED OR PLATED FINISHES		SCALE		1:1		
DECIMALS .X ± .05 .XX ± .01 .XXX ± .005		TOLERANCES		FRACTIONS ± 1/64 ANGLES ± 0° 30'		
CODE		A		TYPE & TEMPER		
FINISH & SPEC. NO.		HEAT TREAT. SPEC.		DRAWN		
ELEC. DES. APP.		MECH. DES. APP.		CHECKED		
LD1509		Ø		FINAL APPROVAL		

MIL AA