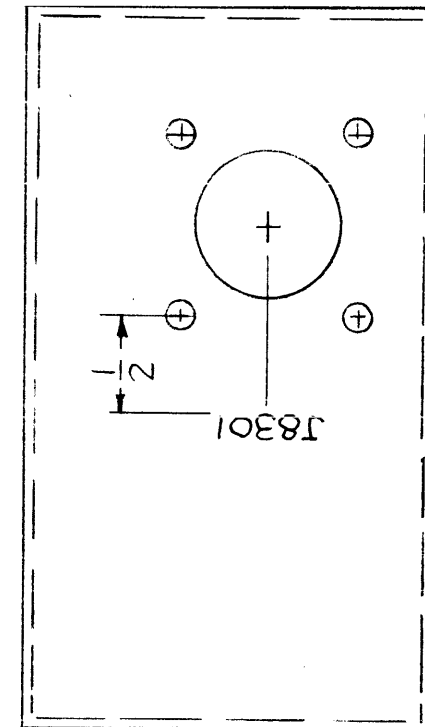
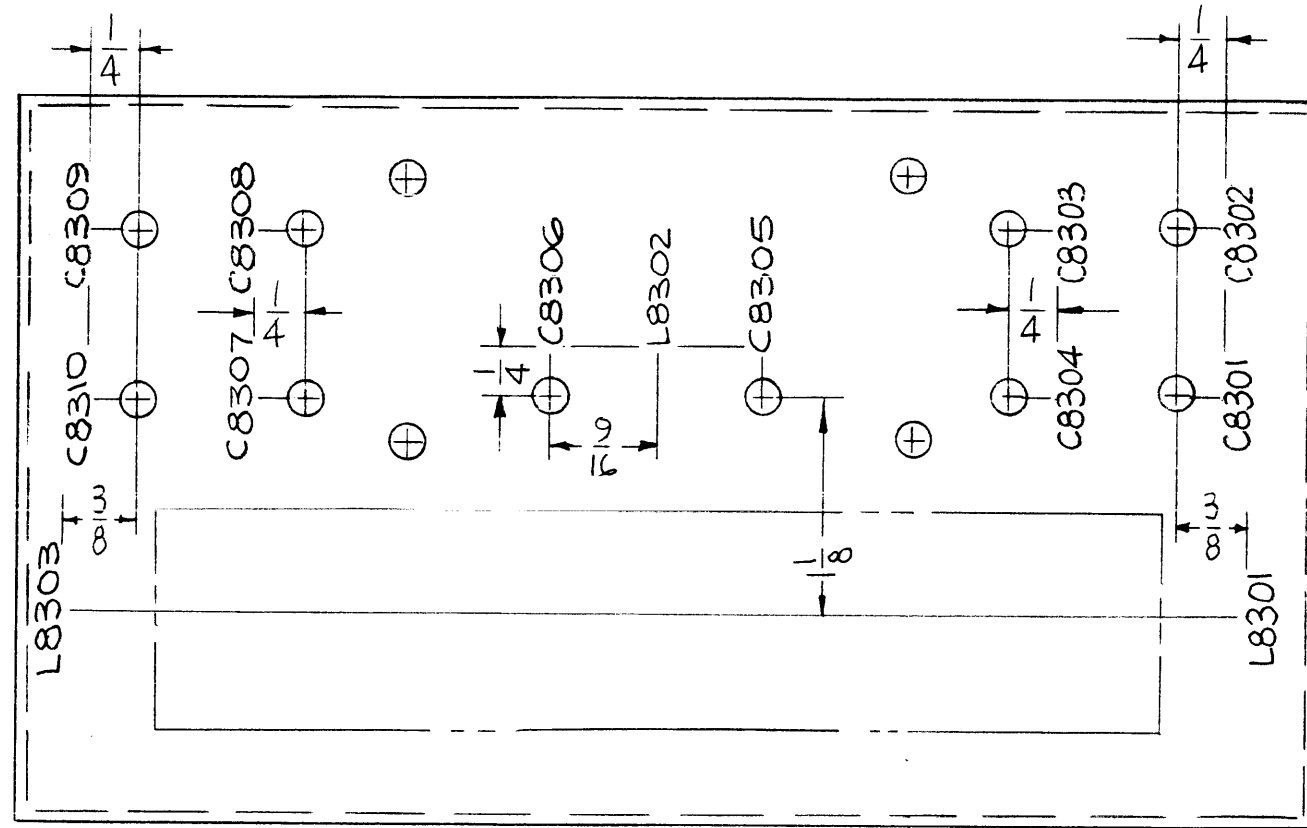
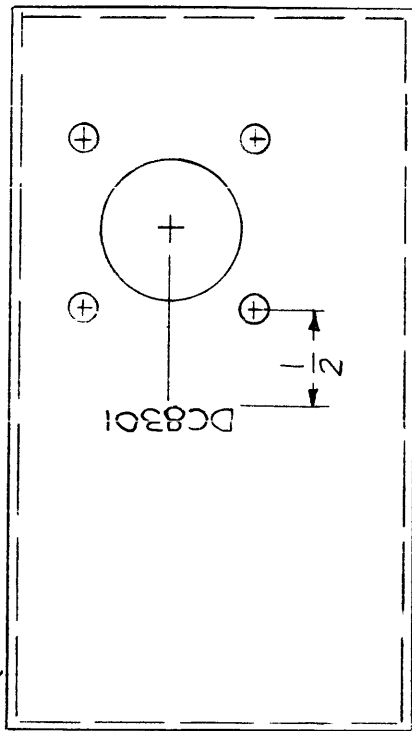


LD1508

REVISIONS						
SYM	DESCRIPTION	DATE	E.M.N. NO.	DRAFT	CHKD	APPD
X	EXP. RELEASE	11-7-66				
Ø	ORIGINAL RELEASE FOR PRODUCTION	1-10-67	Ø	RME		



MARK TMC P/N (LD1508-)
1/8 HIGH GOTHIC W/LATEST
REV. LETTER, ON LIP

REF: M55014-

REQ'D.	ITEM	PART NUMBER	DESCRIPTION	SYMBOL
F. BUDETTI LIST OF MATERIAL				
MATERIAL			THE TECHNICAL MATERIEL CORP. MAMARONECK, NEW YORK	
FINISH			TITLE MARKING, CHASSIS FILTER AS PER TMC SPEC. S-727	
UNLESS OTHERWISE SPECIFIED DIMENSIONS ARE IN INCHES AND INCLUDE CHEMICALLY APPLIED OR PLATED FINISHES			DRAWN <i>[Signature]</i> DATE 11-7-66 CHECKED DATE ELECT. DES. DATE MECH. DES. <i>[Signature]</i> DATE	FINAL APPROVAL <i>[Signature]</i> DATE 1/10/67 LD1508 SHEET
DECIMALS .X ± .05 .XX ± .01 .XXX ± .005		TOLERANCES	FRACTI NS ± 1/64 ANGLES ± 0° 30'	
THE CONTENTS OF THIS DRAWING ARE THE EXCLUSIVE PROPERTY OF THE TECHNICAL MATERIEL CORP. ITS UNAUTHORIZED USE OR REPRODUCTION IN WHOLE OR IN PART IS STRICTLY FORBIDDEN.			M11 <i>[Signature]</i> 1/10/67	REV. LTR. Ø

MARKING PROCESS: AS PER TMC SPECIFICATION S-727.

LETTERING: 1/8 HIGH BLACK GOTHIC, LOCATED AS SHOWN

NOTES

Q'TY./UNIT	MODEL USED ON	ASS'Y. NO.
SCALE III	CODE A	
AF107		