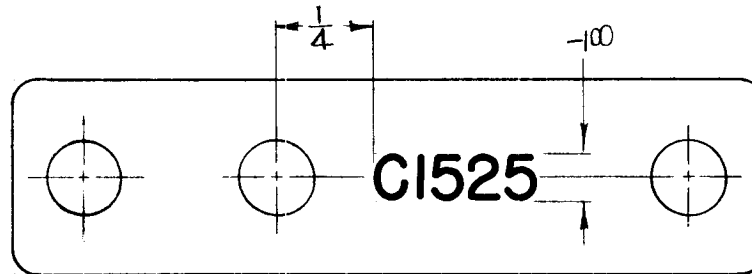
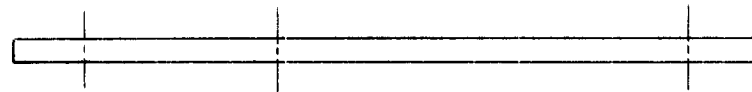
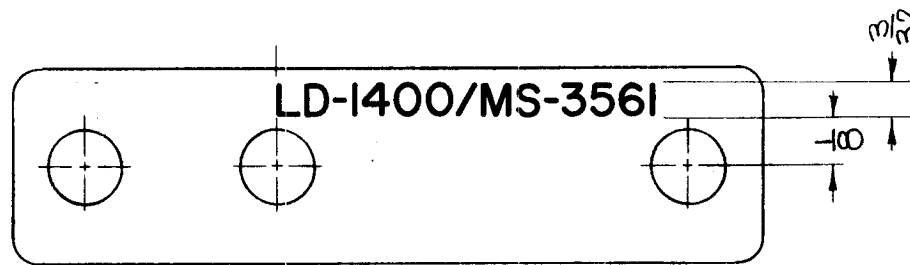


REQ. PER UNIT	USED ON			LD-1400
	MODEL	ASS'Y. NO.	DATE	
1	TTR-10	A-2831	10-17-63	



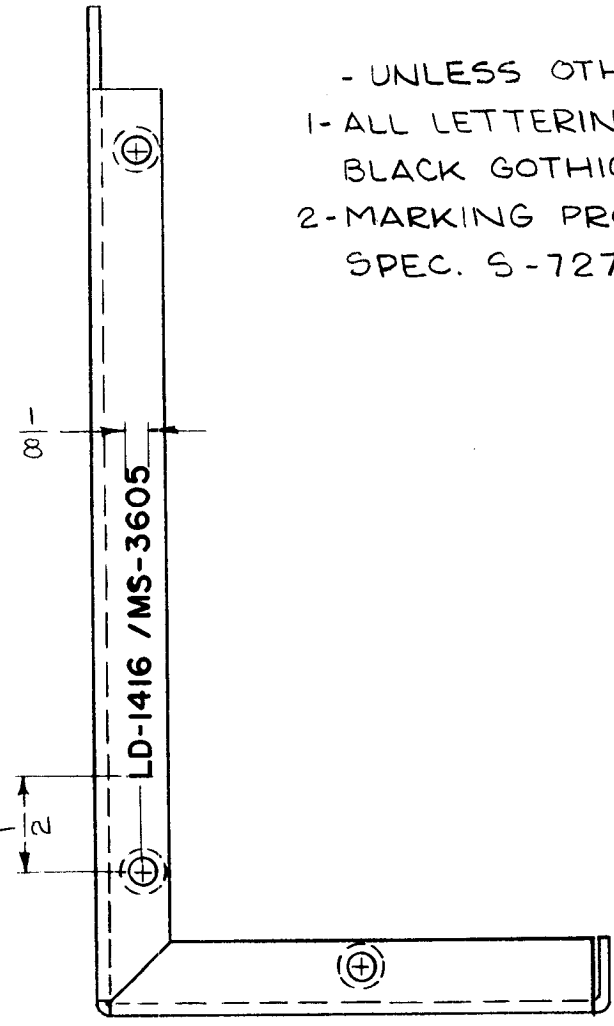
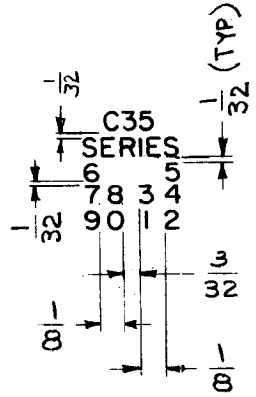
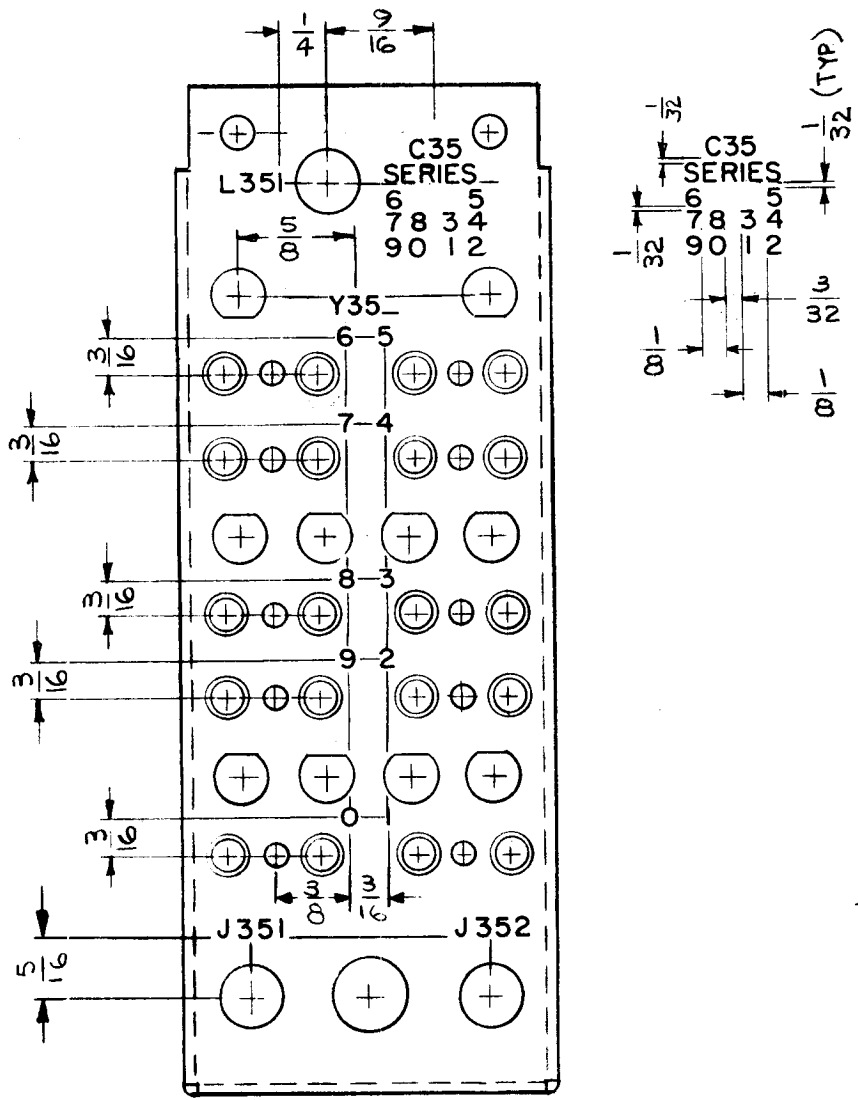
UNLESS OTHERWISE SPECIFIED:  
 1. ALL LETTERING TO BE BLACK  
 GOTHIC, SIZE & LOCATION  
 AS SHOWN.  
 2. MARKING PROCESS: PER  
 TMC SPEC. S-727

REF: MS-356I

SYM	DESCRIPTION	DATE	CH. NO.	DRAFTS	CHECKER	ENG. APP.	REQ. ITEM	PART NO.	DESCRIPTION	SYMBOL
									KOHN	
							~		THE TECHNICAL MATERIEL CORP.	
							STOCK SIZE		MAMARONECK. NEW YORK	
							~		MARKING, PLATE, CAPACITOR MTG	
							MATERIAL		MARKING PROCESS: PER TMC SPEC. S-727	
							~	~	<i>R. Kohn</i>	
							TYPE & TEMPER	HEAT TREAT. SPEC.	10-17-63	11/4/63
									DRAWN	CHECKED
									<i>R. KOHN</i>	<i>R. KOHN</i>
									11-7-63	11-7-63
							FINISH & SPEC. NO.		ELEC. DES. APP.	MECH. DES. APP.
										LD-1400

REQ. PER UNIT	USED ON		
	MODEL	ASS'Y. NO.	DATE
5	LFS-1		8-21-63

LD-1416 0



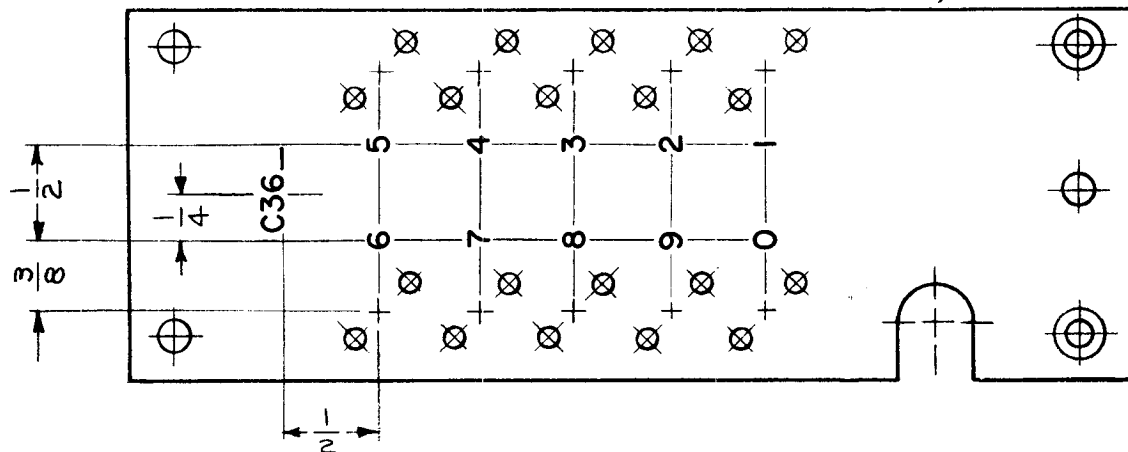
- UNLESS OTHERWISE SPECIFIED -  
 1- ALL LETTERING TO BE 3/32 HIGH, BLACK GOTHIC.  
 2- MARKING PROCESS: AS PER TMC SPEC. S-727.

REF.: MS-3605 (4)

REQ.	ITEM	PART NO.	M. GELLMAN				DESCRIPTION	SYMBOL
			STOCK SIZE				THE TECHNICAL MATERIEL CORP. MAMARONECK. NEW YORK	
0	ORIGINAL RELEASE	728.64					-	LB
X1	SYMBOL "C35" WAS "C" SYMBOL "Y35" WAS "Y"	2/24/64	1	SS		MARKING METHOD - AS PER S-727		
SYM	DESCRIPTION	DATE	CH. NO.	DRAFTS	CHECKER	ENG. APP.	MATERIAL	
UNLESS OTHERWISE SPECIFIED DIMENSIONS ARE IN INCHES AND INCLUDE CHEMICALLY APPLIED OR PLATED FINISHES		SCALE			<div style="display: flex; justify-content: space-between;"> <span>G. Jensen</span> <span>@</span> <span>RUC</span> </div>			
		1:1						TYPE & TEMPER
DECIMALS .X ± .05 .XX ± .01 .XXX ± .005	TOLERANCES	FRACTIONS ± 1/64 ANGLES ± 0° 30'	CODE	A		<div style="display: flex; justify-content: space-between;"> <span>LD-1416 0</span> </div>		
				FINISH & SPEC. NO.		ELEC. DES. APP.	MECH. DES. APP.	

REQ. PER UNIT	USED ON			LD-1417	Φ
	MODEL	ASS'Y. NO.	DATE		
5	LFS-1		10-31-63		

MARKING, TMC PART NO.  
LD-1417 / PX-835, ON REAR, WITH  
LATEST REVISION LETTERS.



UNLESS OTHERWISE SPECIFIED:

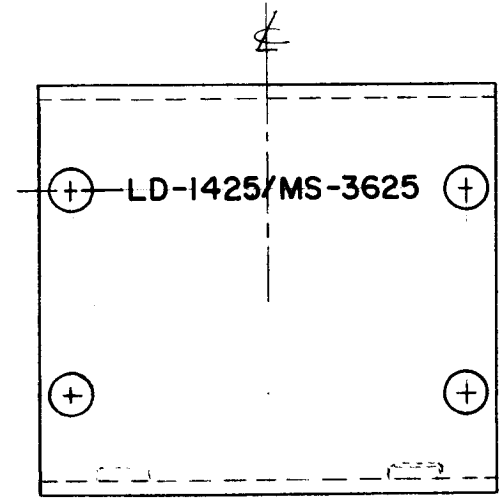
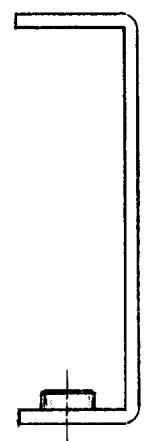
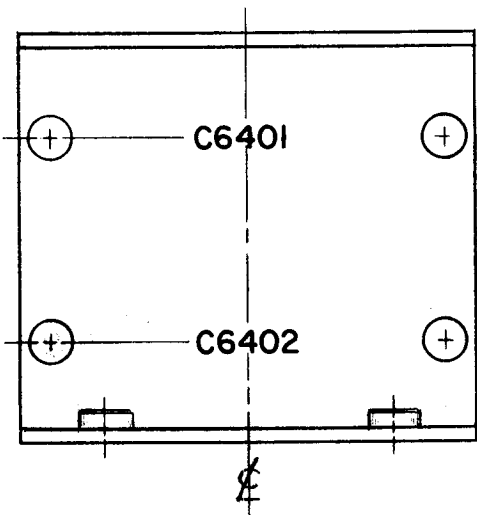
MARKING PROCESS: AS PER TMC SPECIFICATION S-727.

LETTERING: 1/8 HIGH BLACK GOTHIC, LOCATED AS SHOWN.

REF.: PX-835

								REQ. ITEM	PART NO.	M. GELLMAN	DESCRIPTION	SYMB L	
Φ	ORIGINAL RELEASE FOR PRODUCTION	7-27-64	Φ								THE TECHNICAL MATERIEL CORP. MAMARONECK. NEW YORK		
XI	TMC P/N RELOCATED TO REAR SYMBOL C36 - ADDED	2/24/64	1								MARKING, BOARD MOUNTING, CAPACITOR		
SYM	DESCRIPTION	DATE	CH. NO.	DRAFTS	CHECKER	ENG. APP.			MATERIAL		MARKING METHOD PER TMC S-727.		
UNLESS OTHERWISE SPECIFIED DIMENSIONS ARE IN INCHES AND INCLUDE CHEMICALLY APPLIED OR PLATED FINISHES		SCALE 1:1								G. Lancer	@	RAC	
DECIMALS .X ± .05 .XX ± .01 .XXX ± .005	TOLERANCES	FRACTIONS ± 1/64 ANGLES ± 0° 30'	CODE A										
							TYPE & TEMPER	HEAT TREAT. SPEC.					
							FINISH & SPEC. NO.					LD-1417	Φ
							ELEC. DES. APP.						
							MECH. DES. APP.						

REQ. PER UNIT	USED ON			LD-1425 ○
	MODEL	ASS'Y. NO.	DATE	
4	MAF-1		2-14-64	



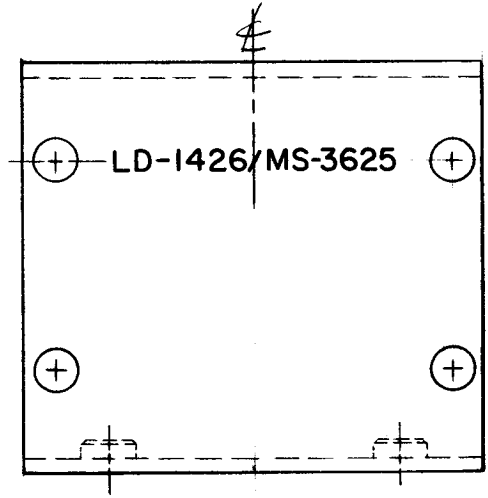
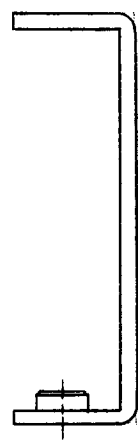
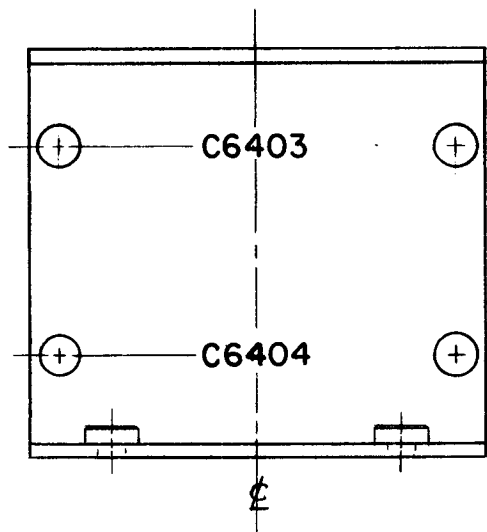
**MARKING PROCESS: AS PER TMC SPECIFICATION S-727.**

**LETTERING: 1/8 HIGH BLACK GOTHIC, LOCATED AS SHOWN.**

REF: MS-3625

REQ.	ITEM	PART NO.				DESCRIPTION	SYMBOL	
		//				Altonen		
		STOCK SIZE				THE TECHNICAL MATERIEL CORP.		
		//				MAMARONECK. NEW YORK		
		MATERIAL				MARKING, BRACKET, MOUNTING		
○	ORIG. RELEASE FOR PROD.	4-24-64	A.M.	@				
XI	ORIGINAL LOST REDRAWN	2-14-64	T.R.					
SYM	DESCRIPTION	DATE	CH. NO.	DRAFTS	CHECKER	ENG. APP.		
UNLESS OTHERWISE SPECIFIED DIMENSIONS ARE IN INCHES AND INCLUDE CHEMICALLY APPLIED OR PLATED FINISHES		SCALE						
		1:1						
DECIMALS: .X ± .05 .XX ± .01 .XXX ± .005		FRACTIONS ± 1/64 ANGLES ± 0° 30'	CODE					
TOLERANCES		A						
			TYPE & TEMPER		HEAT TREAT. SPEC.			
			//		//			
			FINISH & SPEC. NO.					
					T. Ramirez			
					J. De			
					R. K.			
					DRAWN			
					CHECKED			
					FINAL APPROVAL			
					T. Ramirez			
					J. De			
					R. K.			
					ELEC. DES. APP.			
					MECH. DES. APP.			
					LD-1425 ○			

REQ. PER UNIT	USED ON			LD-1426 O
	MODEL	ASS'Y. NO.	DATE	
1	MAF-1		2-14-64	



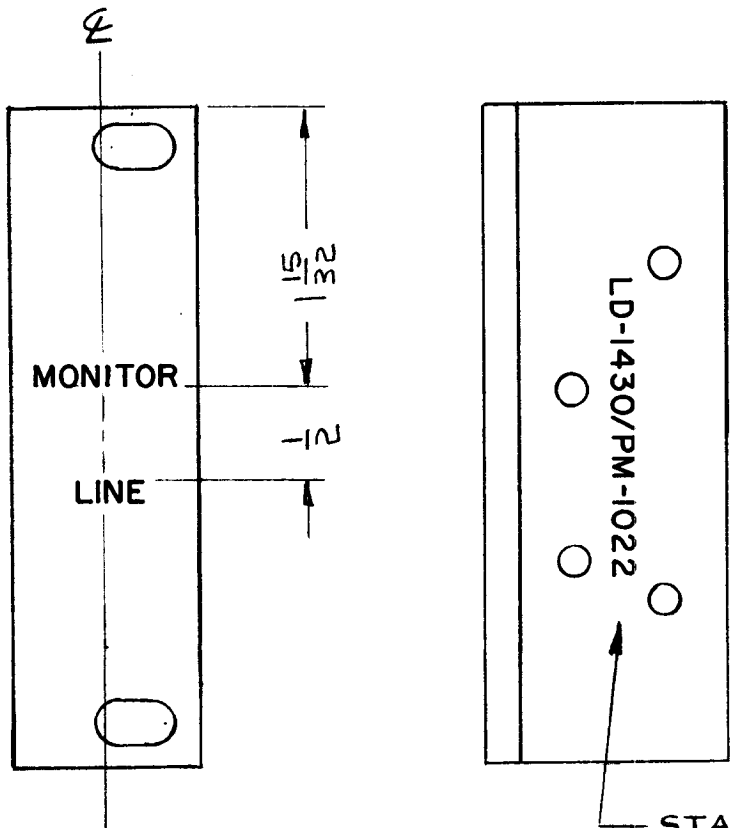
**MARKING PROCESS: AS PER TMC SPECIFICATION S-727.**  
**LETTERING: 1/8 HIGH BLACK GOTHIC, LOCATED AS SHOWN.**

REF: MS-3625

							REQ. ITEM	PART NO.	As shown	DESCRIPTION	SYMBOL	
O	ORIG. RELEASE FOR PROD.	4-24-64		A.M.	@		#		THE TECHNICAL MATERIEL CORP. MAMARONECK, NEW YORK			
XI	ORIGINAL DWG LOST REDRAWN	2/14/64		T.R.			#		MARKING, BRACKET, MOUNTING			
SYM	DESCRIPTION	DATE	CH. NO.	DRAFTS	CHECKER	ENG. APP.	MATERIAL					
UNLESS OTHERWISE SPECIFIED DIMENSIONS ARE IN INCHES AND INCLUDE CHEMICALLY APPLIED OR PLATED FINISHES		SCALE	1:1				#		T. RAMIREZ	DR	DR	
DECIMALS .X ± .05 .XX ± .01 .XXX ± .005	TOLERANCES	FRACTIONS ± 1/64 ANGLES ± 0° 30'	CODE A			#		TYPE & TEMPER	HEAT TREAT. SPEC.	DRAWN	CHECKED	FINAL APPROVAL
						#		FINISH & SPEC. NO.		ELEC. DES. APP.	MECH. DES. APP.	LD-1426 O

REQ. PER UNIT	USED ON		
	MODEL	ASS'Y. NO.	DATE
1	LPP-4		10-23-63

LD-1430



HEIGHT OF LETTER	DEPTH OF STROKE	WIDTH OF STROKE
1/8	.010	.020

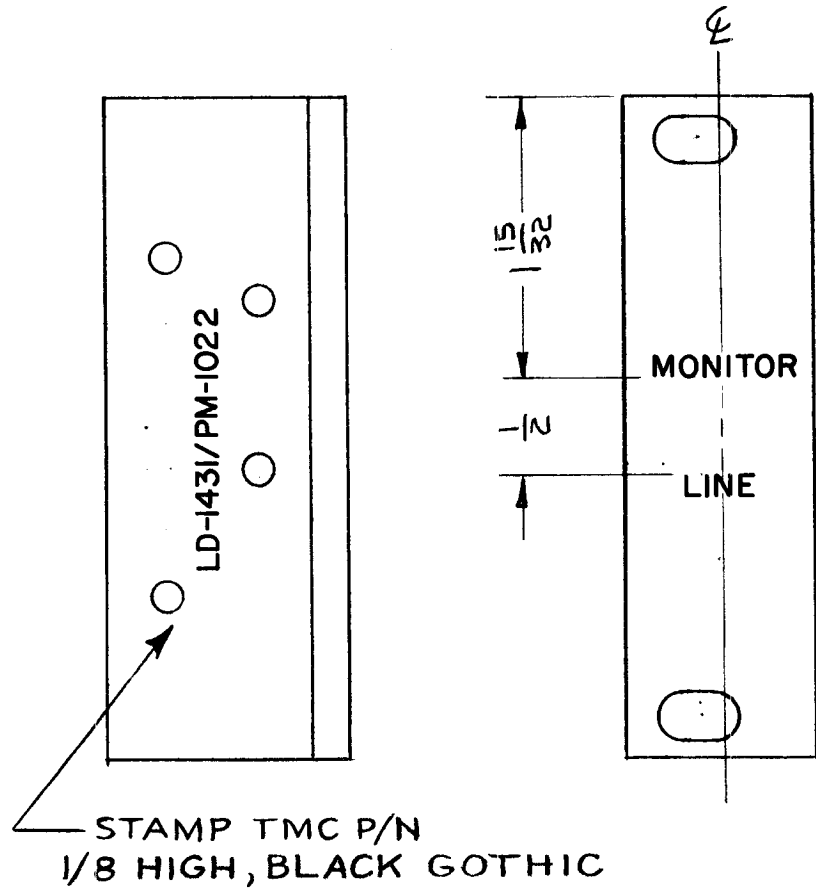
- NOTES:
1. ENGRAVING TO BE GOTHIC, WHITE FILLED SIZE SHOWN ON CHART.
  2. LETTERING TO BE CENTERED AND LOCATED AS SHOWN.

STAMP TMC P/N 1/8 HIGH BLACK GOTHIC

REF : PM-1022

REQ. ITEM	PART NO.	I. JOHNSON		DESCRIPTION	SYMBOL							
		<b>THE TECHNICAL MATERIEL CORP.</b> MAMARONECK. NEW YORK										
		MARKING, FRONT SUPPORT, RIGHT MARKING METHOD: ENGRAVING										
SYM	DESCRIPTION	DATE	CH. NO.	DRAFTS	CHECKER	ENG. APP.	MATERIAL	TYPE & TEMPER	HEAT TREAT. SPEC.	DRAWN	CHECKED	FINAL APPROVAL
	UNLESS OTHERWISE SPECIFIED DIMENSIONS ARE IN INCHES AND INCLUDE CHEMICALLY APPLIED OR PLATED FINISHES	SCALE	1:1									
	DECIMALS .X ± .05 .XX ± .01 .XXX ± .005	TOLERANCES	FRACTIONS ± 1/64 ANGLES ± 0° 30'	CODE	A							
												LD-1430

REQ. PER UNIT	USED ON			LD-1431	O
	MODEL	ASS'Y. NO.	DATE		
1	LPP-4		10-23-63		



HEIGHT OF LETTER	DEPTH OF STROKE	WIDTH OF STROKE
1/8	.010	.020

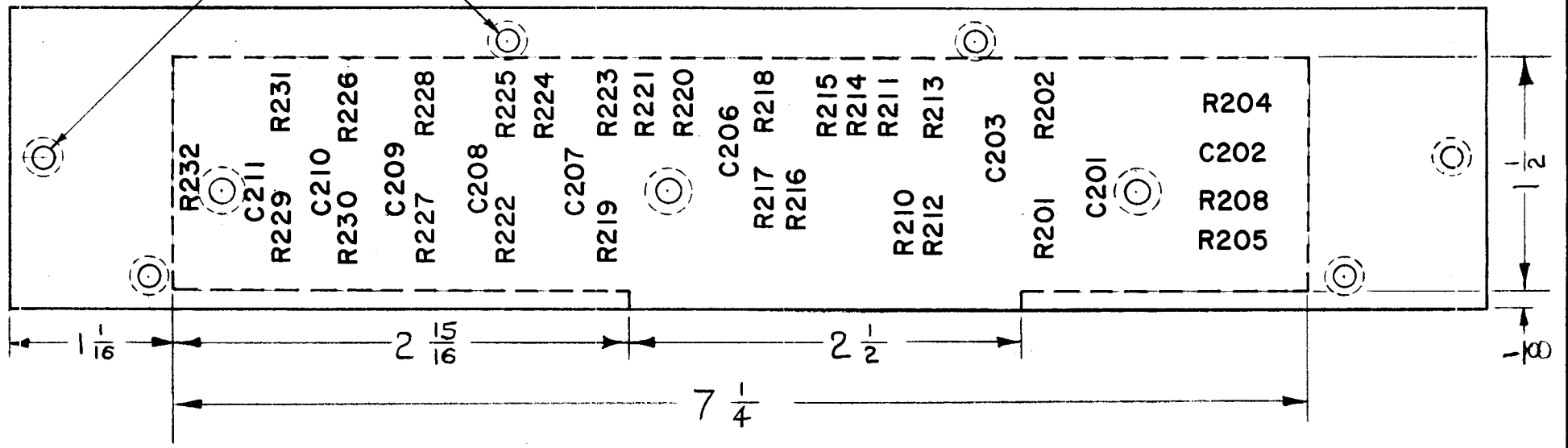
- NOTES
- ENGRAVING TO BE GOTHIC WHITE FILLED SIZE SHOWN ON CHART.
  - LETTERING TO BE CENTERED AND LOCATED AS SHOWN.

REF: PM-1022

							REQ. ITEM	PART NO.	I. JOHNSON	DESCRIPTION	SYMBOL
							STOCK SIZE		THE TECHNICAL MATERIEL CORP. MAMARONECK, NEW YORK		
	ORIGINAL RELEASE FOR PRODUCTION	3/9-64	2	<i>JL</i>			MATERIAL		MARKING, FRONT SUPPORT, LEFT		
	EXPER. RELEASE	3/9/64	1	<i>JL</i>			TYPE & TEMPER		MARKING METHOD: ENGRAVING		
SYM	DESCRIPTION	DATE	CH. NO.	DRAFTS	CHECKER	ENG. APP.	HEAT TREAT. SPEC.		<i>JL</i>	<i>@ 3-6-64</i>	<i>RDC 3/9/64</i>
UNLESS OTHERWISE SPECIFIED DIMENSIONS ARE IN INCHES AND INCLUDE CHEMICALLY APPLIED OR PLATED FINISHES		SCALE		1:1			FINISH & SPEC. NO.		<i>JL</i>	<i>JL</i>	LD-1431 O
DECIMALS: X ± .05 XX ± .01 XXX ± .005		FRACTIONS: ± 1/64 ANGLES: ± 0° 30'		CODE				ELEC. DES. APP.		MECH. DES. APP.	
TOLERANCES		A									

REQ. PER UNIT 4	USED ON			LD-1438 ○
	MODEL MSA-1	ASS'Y. NO.	DATE 12-19-63	

NOTE C'SUNK HOLES WHEN MARKING



MARKING PROCESS: AS PER TMC SPECIFICATION S-727.

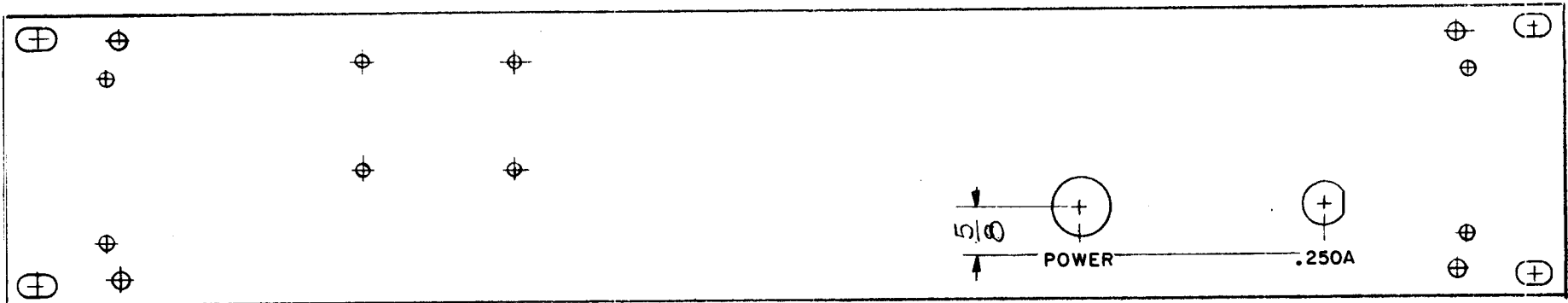
LETTERING: 1/8 HIGH BLACK GOTHIC, LOCATED AS SHOWN.

REF. MS-3585

REQ.	ITEM	PART NO.	ALT	TOWEN	DESCRIPTION	SYMBOL						
		#			THE TECHNICAL MATERIEL CORP. MAMARONECK. NEW YORK							
		STOCK SIZE			MARKING, PLATE, MOUNTING							
○	ORIGINAL RELEASE FOR PRODUCTION	4-1764	○	AM	@	MARKING METHOD: PER TMC SPEC. S-727						
SYM	DESCRIPTION	DATE	CH. NO.	DRAFTS	CHECKER	ENG. APP.	MATERIAL	TYPE & TEMPER	HEAT TREAT. SPEC.	DRAWN	CHECKED	FINAL APPROVAL
	UNLESS OTHERWISE SPECIFIED DIMENSIONS ARE IN INCHES AND INCLUDE CHEMICALLY APPLIED OR PLATED FINISHES	SCALE	1:1				#	#		TRAMIREZ	@3-12-64	RJC
DECIMALS X ± .05 .XX ± .01 .XXX ± .005	TOLERANCES	FRACTIONS ± 1/64 ANGLES ± 0° 30'	CODE A				#	#				LD-1438 ○
							FINISH & SPEC. NO.			ELEC. DES. APP.	MECH. DES. APP.	



REQ. PER UNIT	USED ON			LD-1440 0
	MODEL	ASS'Y. NO.	DATE	
1	MPS-1		12-13-63	



FRONT OF PANEL SHOWN

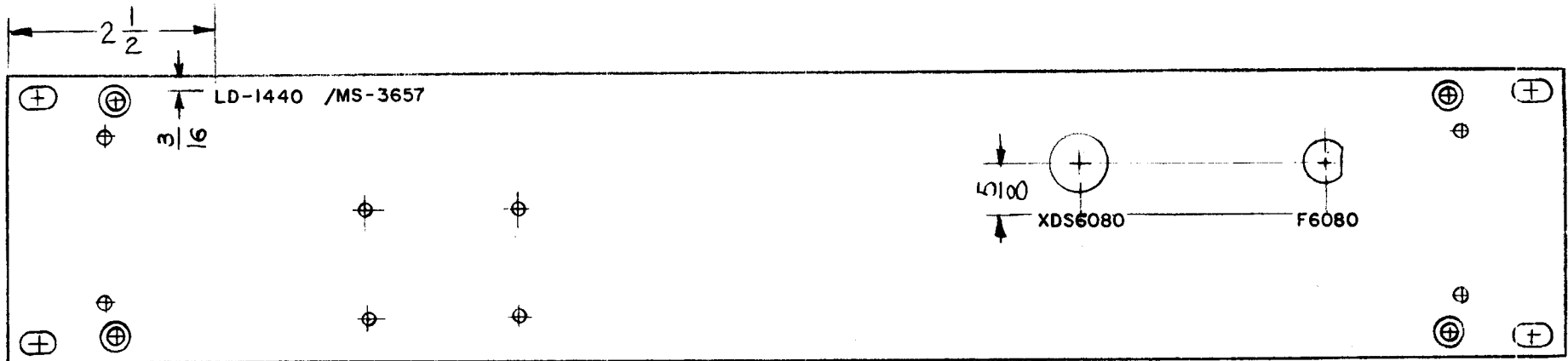
HEIGHT OF LETTERS	DEPTH OF STROKE	WIDTH OF STROKE
1/8	.010	.020

NOTE -  
ENGRAVING TO BE WHITE FILLED GOTHIC  
SIZE SHOWN ON CHART

REF: MS-3657

REQ. ITEM	PART NO.	AALTONEN	DESCRIPTION	SYMBOL							
0	ORIGINAL RELEASE FOR PRODUCTION	4/20/64	0 A.M. @								
X2	LETTERING WAS 3/32 HIGH	1-21-64	X2 NP.								
X1	"POWER" ADDED										
SYM	DESCRIPTION	DATE	CH. NO.	DRAFTS	CHECKER	ENG. APP.	MATERIAL				
UNLESS OTHERWISE SPECIFIED DIMENSIONS ARE IN INCHES AND INCLUDE CHEMICALLY APPLIED OR PLATED FINISHES		SCALE		1:2				G.D.L		1/14/64 RDL	
DECIMALS: .X ± .05 .XX ± .01 .XXX ± .005		FRACTIONS: ± 1/64 ANGLES: ± 0° 30'		CODE		A		TYPE & TEMPER		HEAT TREAT. SPEC.	
TOLERANCES								DRAWN		CHECKED	
								FINISH & SPEC. NO.		ELEC. DES. APP. MECH. DES. APP.	
										LD-1440 0	

REQ. PER UNIT	USED ON			LD-1440 ○
	MODEL	ASS'Y. NO.	DATE	
1	MPS-1		12-13-63	



TOP OF PANEL  
REAR OF PANEL SHOWN

MARKING PROCESS: AS PER TMC SPECIFICATION S-727.

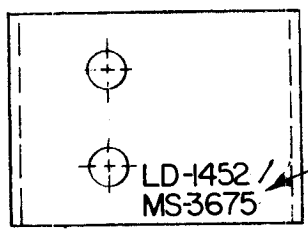
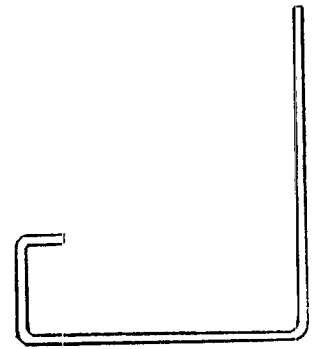
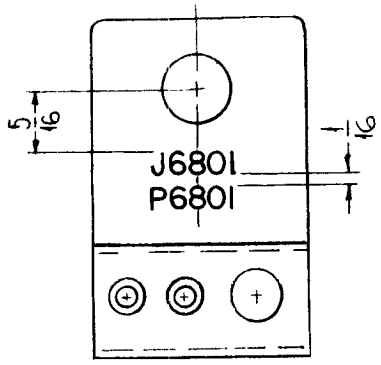
LETTERING: 1/8 HIGH BLACK GOTHIC, LOCATED AS SHOWN.

REF: MS-3657

REQ.	ITEM	PART NO.	AALTONEN DESCRIPTION				SYMBOL
		#	THE TECHNICAL MATERIEL CORP. MAMARONECK. NEW YORK				
0	ORIGINAL RELEASE FOR PRODUCTION	4-20-64	0	A.M.	@		
X2	CHG MADE ON SHT 1	1-21-64	X2	NP			
SYM	DESCRIPTION	DATE	CH. NO.	DRAFTS	CHECKER	ENG. APP.	
UNLESS OTHERWISE SPECIFIED DIMENSIONS ARE IN INCHES AND INCLUDE CHEMICALLY APPLIED OR PLATED FINISHES		SCALE	1:2		G.D.L.		
DECIMALS X ± .05 XX ± .01 XXX ± .005		TOLERANCES	FRACTIONS ± 1/64 ANGLES ± 0° 30'		CODE	A	
		TYPE & TEMPER	HEAT TREAT. SPEC.		DRAWN	CHECKED	FINAL APPROVAL
		FINISH & SPEC. NO.		ELEC. DES. APP.	MECH. DES. APP.	LD-1440 ○	

REQ. PER UNIT	USED ON			LD-1452	0
	MODEL	ASS'Y. NO.	DATE		
1	GPT-200K (AT-105)	A-2765	3-16-64		

**MARKING PROCESS: AS PER TMC SPECIFICATION S-727.**  
**LETTERING: 1/8 HIGH BLACK GOTHIC, LOCATED AS SHOWN.**

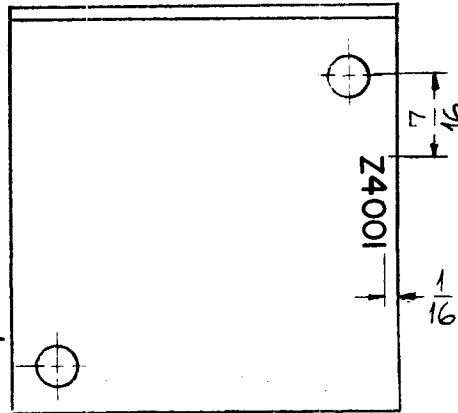
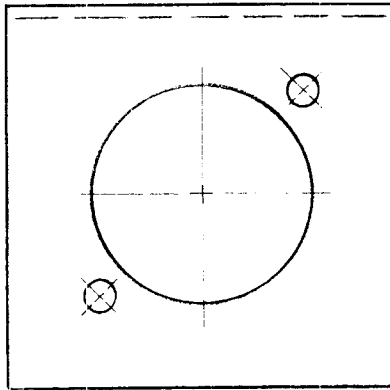


MARK TMC PART NO. W/LATEST REVISIONS

REF: MS3675

REQ.	ITEM	PART NO.	F. BUDETTI				DESCRIPTION	SYMBOL				
							THE TECHNICAL MATERIEL CORP. MAMARONECK, NEW YORK					
			STOCK SIZE				MARKING PROCESS: AS PER TMC SPEC S-727					
0						ORIGINAL RELEASE FOR PROD. 3-20-64	MARKING, BRACKET CONNECTOR MTG.					
SYM	DESCRIPTION	DATE	CH. NO.	DRAFTS	CHECKER	ENG. APP.	MATERIAL					
	UNLESS OTHERWISE SPECIFIED DIMENSIONS ARE IN INCHES AND INCLUDE CHEMICALLY APPLIED OR PLATED FINISHES	SCALE 1"=1"					SRG					
	DECIMALS .X ± .05 .XX ± .01 .XXX ± .005	TOLERANCES	FRACTIONS ± 1/64 ANGLES ± 0° 30'	CODE			TYPE & TEMPER	HEAT TREAT. SPEC.	DRAWN	CHECKED	FINAL APPROVAL	
											LD-1452	0
							FINISH & SPEC. NO.	ELEC. DES. APP.	MECH. DES. APP.			

REQ. PER UNIT	USED ON			LD-1453	0
	MODEL	ASS'Y. NO.	DATE		
1	GPF-200K (AX-392)	A-3159	3-19-64		



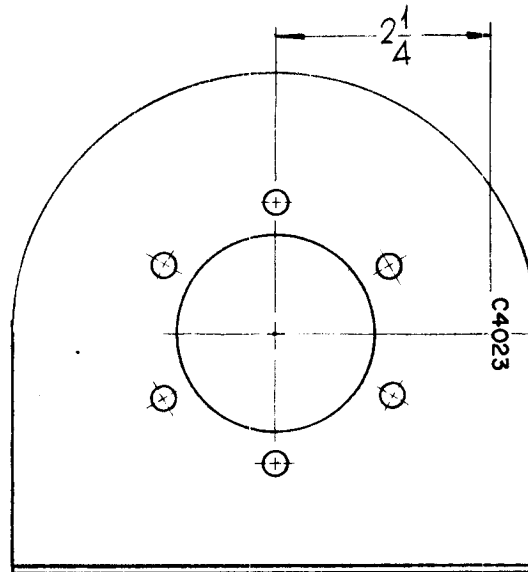
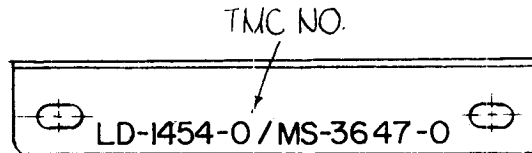
**MARKING PROCESS:**  
AS PER TMC SPECIFICATION S-727.

**LETTERING:**  
1/8 HIGH BLACK GOTHIC, LOCATED AS SHOWN.

MARK LD-1453-0/MS-3294-0 (TMC NO)  
ON REAR

							REQ. ITEM	PART NO.	F. BUDETTI	DESCRIPTION	SYMBOL		
									THE TECHNICAL MATERIEL CORP. MAMARONECK. NEW YORK				
									MARKING PROCESS: AS PER TMC SPEC. S727				
									MARKING, BRACKET, MTG. METERING CIRCUIT				
0	ORIGINAL RELEASE FOR PROD.	3-20-64											
SYM	DESCRIPTION	DATE	CH. NO.	DRAFTS	CHECKER	ENG. APP.	MATERIAL		SRG	JCB	RDC 4-7-64		
UNLESS OTHERWISE SPECIFIED DIMENSIONS ARE IN INCHES AND INCLUDE CHEMICALLY APPLIED OR PLATED FINISHES		SCALE	1" = 1"				TYPE & TEMPER		HEAT TREAT. SPEC.		DRAWN	CHECKED	FINAL APPROVAL
DECIMALS: .X ± .05 .XX ± .01 .XXX ± .005	TOLERANCES	FRACTIONS ± 1/64 ANGLES ± 0° 30'	CODE	A				FINISH & SPEC. NO.		ELEC. DES. APP.	MECH. DES. APP.	LD-1453	0

REQ. PER UNIT	USED ON			LD-1454	0
	MODEL	ASS'Y. NO.	DATE		
1	GPT-200K (AX-392)	A-3159	3-19-64		

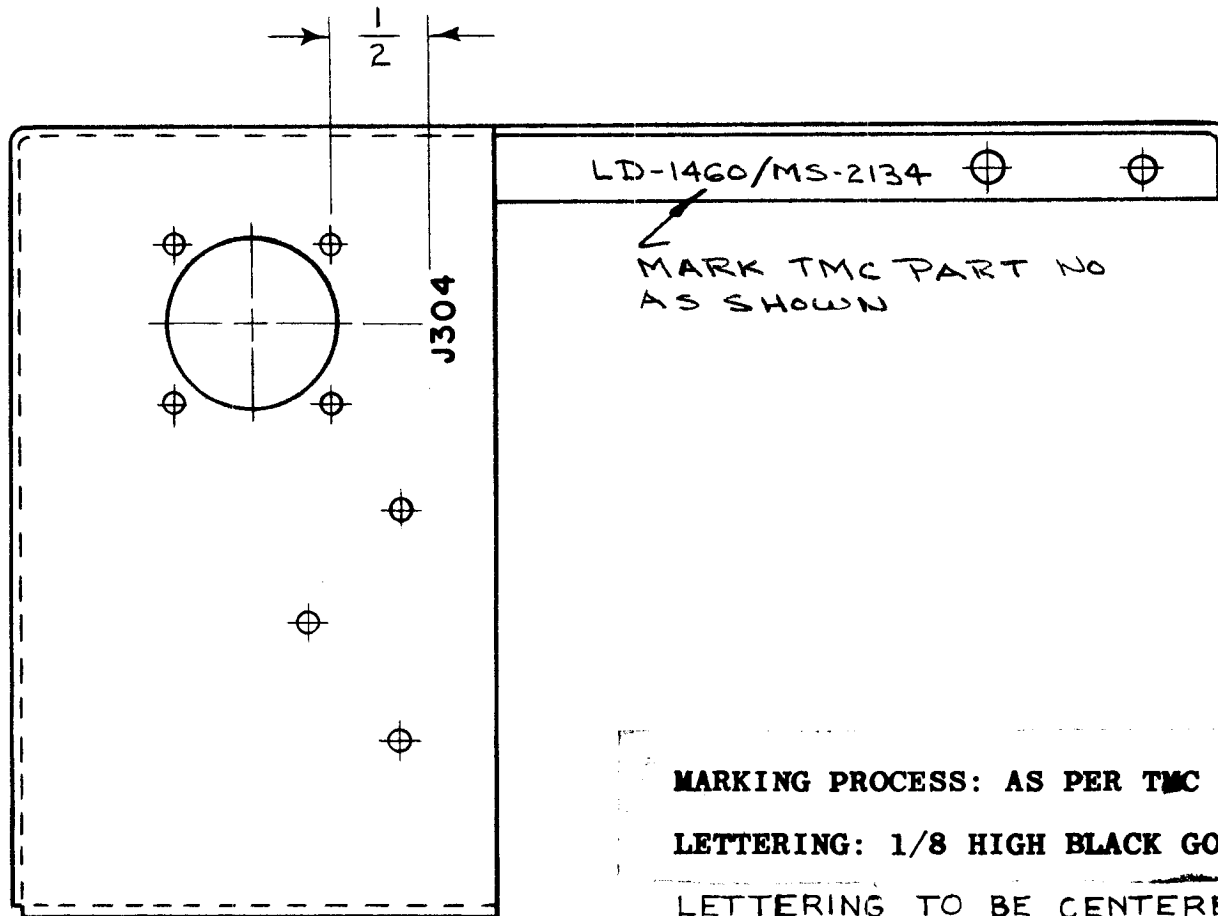


**MARKING PROCESS: AS PER TMC SPECIFICATION S-727.**

**LETTERING: 1/8 HIGH BLACK GOTHIC, LOCATED AS SHOWN.**

REQ.	ITEM	PART NO.	F. BUDETTI DESCRIPTION				SYMBOL	
			THE TECHNICAL MATERIEL CORP. MAMARONECK. NEW YORK					
			STOCK SIZE					
0	ORIGINAL RELEASE FOR PROD	3-206A	MARKING PROCESS: AS PER TMC SPEC. S-727					
			MARKING, BRACKET, CAPACITOR MTG.					
SYM	DESCRIPTION	DATE	CH. NO.	DRAFTS	CHECKER	ENG. APP.	MATERIAL	
	UNLESS OTHERWISE SPECIFIED DIMENSIONS ARE IN INCHES AND INCLUDE CHEMICALLY APPLIED OR PLATED FINISHES	SCALE	1/2" = 1"					
DECIMALS .X ± .05 .XX ± .01 .XXX ± .005	TOLERANCES	FRACTIONS ± 1/64 ANGLES ± 0° 30'	CODE	A				
							SRG	
							QC8	
							R/L 4-7-64	
							TYPE & TEMPER	
							HEAT TREAT. SPEC.	
							DRAWN	
							CHECKED	
							FINAL APPROVAL	
							DD Mc	
							LD-1454	
							0	
							FINISH & SPEC. NO.	
							ELEC. DES. APP.	
							MECH. DES. APP.	

REQ. PER UNIT	USED ON			LD-1460
	MODEL	ASS'Y. NO.	DATE	
1	CMO-1		2-14-64	



MARKING PROCESS: AS PER TMC SPECIFICATION S-727.

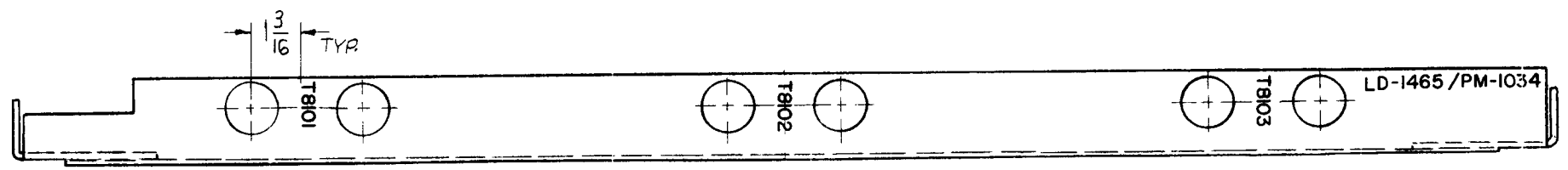
LETTERING: 1/8 HIGH BLACK GOTHIC, LOCATED AS SHOWN.

LETTERING TO BE CENTERED ON HOLE AS SHOWN

REF: MS-2134

REQ.	ITEM	PART NO.	DESCRIPTION				SYMBOL	
		—//—	THE TECHNICAL MATERIEL CORP. MAMARONECK. NEW YORK					
		STOCK SIZE	MARKING, CHASSIS, ELECTRICAL					
		—//—	MARKING METHOD PER S-727					
SYM	DESCRIPTION	DATE	CH. NO.	DRAFTS	CHECKER	ENG. APP.	MATERIAL	
UNLESS OTHERWISE SPECIFIED DIMENSIONS ARE IN INCHES AND INCLUDE CHEMICALLY APPLIED OR PLATED FINISHES		SCALE	—//—					
DECIMALS .X ± .05 .XX ± .01 .XXX ± .005	TOLERANCES	FRACTIONS ± 1/64 ANGLES ± 0° 30'	CODE A					
		TYPE & TEMPER	HEAT TREAT. SPEC.	DRAWN	CHECKED	FINAL APPROVAL		
				N/P 2/20/64	JDA 2/20/64	RA 2/21/64		
		FINISH & SPEC. NO.	ELEC. DES. APP.	MECH. DES. APP.	LD-1460			

REQ. PER UNIT	USED ON			LD-1465	0
	MODEL	ASS'Y. NO.	DATE		
1	GPT-40K	AP-118	2-25-64		



**MARKING PROCESS: AS PER TMC SPECIFICATION S-727.**

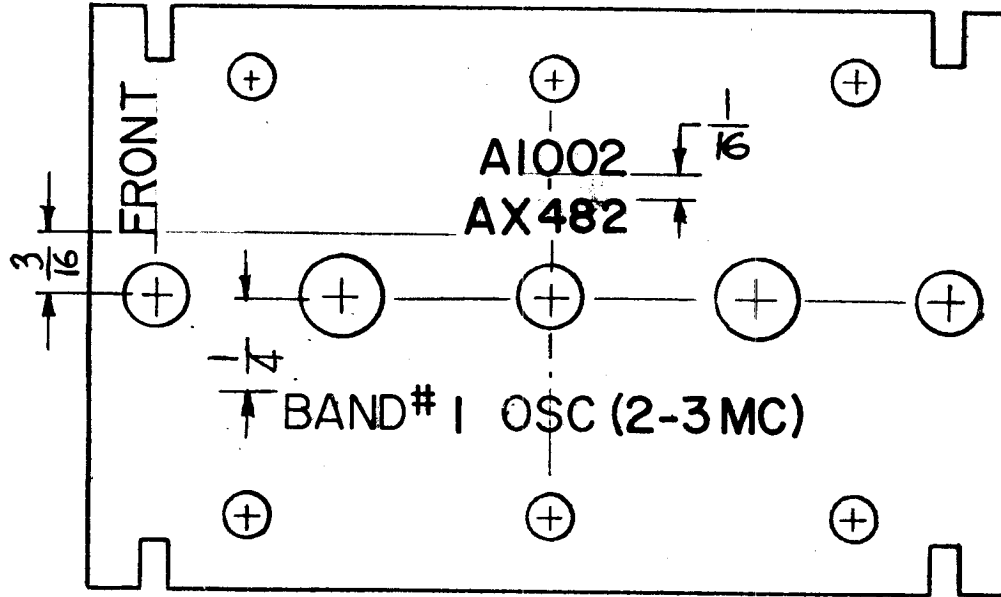
**LETTERING: 1/8 HIGH BLACK GOTHIC, LOCATED AS SHOWN.**

							REQ. ITEM	PART NO.	F. BUDETTI	DESCRIPTION	SYMB L	
										THE TECHNICAL MATERIEL CORP. MAMARONECK. NEW YORK		
										MARKING PROCESS: AS PER TMC SPEC. S-727		
										MARKING, TRANSFORMER SUPPORT		
○	ORIGINAL RELEASE FOR PRODUCTION	3.5.64										
SYM	DESCRIPTION	DATE	CH. NO.	DRAFTS	CHECKER	ENG. APP.	MATERIAL					
UNLESS OTHERWISE SPECIFIED DIMENSIONS ARE IN INCHES AND INCLUDE CHEMICALLY APPLIED OR PLATED FINISHES		SCALE	1/2"=1"						SRG	aa	RAC 3/5/64	
DECIMALS .X ± .05 .XX ± .01 .XXX ± .005	TOLERANCES	FRACTIONS ± 1/64 ANGLES ± 0° 30'	CODE	A						DRWN	CHECKED	FINAL APPROVAL
							TYPE & TEMPER	HEAT TREAT. SPEC.				
									98 RB/aa 3/14/64		LD-1465 0	
							FINISH & SPEC. NO.		ELEC. DES. APP.	MECH. DES. APP.		

THE CONTENTS OF THIS DRAWING ARE THE EXCLUSIVE PROPERTY OF THE TECHNICAL MATERIEL CORP. ITS UNAUTHORIZED USE OR REPRODUCTION IN WHOLE OR IN PART IS STRICTLY FORBIDDEN.

REQ. PER UNIT	USED ON		
	MODEL	ASS'Y. NO.	DATE
1	HFR-1A	A 3492	2-24-64
1	HFR-2	A 3492	

LD 1466 0.



MARKING PROCESS: AS PER T.M.C SPECIFICATION S-727

- NOTES ~ ① ALL LETTERING TO BE  $\frac{3}{32}$ " HIGH BLACK GOTHIC.  
 ② LETTER GROUPS TO BE CENTERED ON HOLES.

REF. PX 650

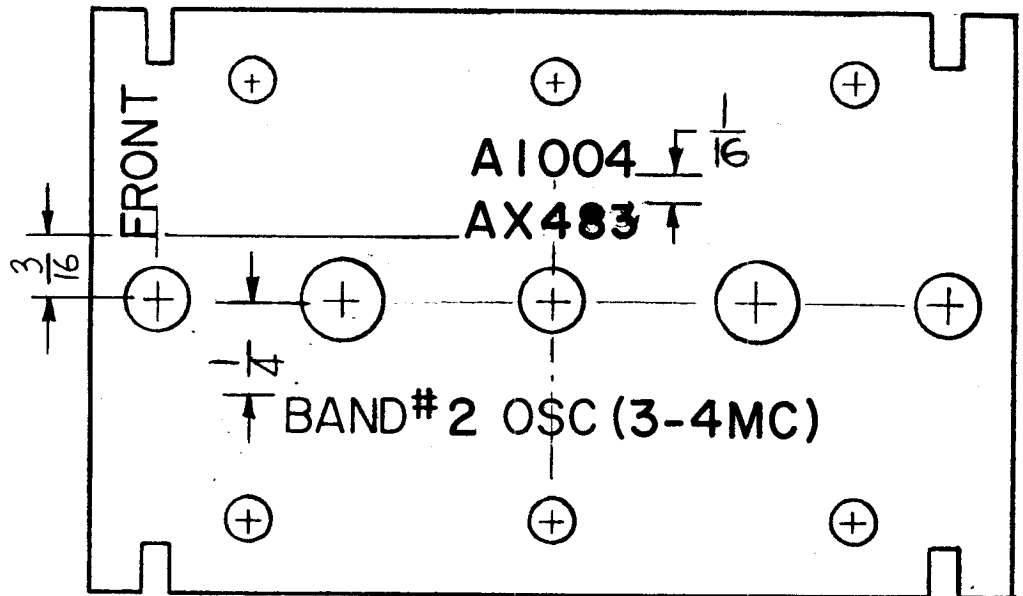
REQ.	ITEM	PART NO.	ANGER	DESCRIPTION	SYMBOL						
				THE TECHNICAL MATERIEL CORP. MAMARONECK, NEW YORK							
Ø	ORIGINAL RELEASE FOR PRODUCTION	8-13-64	+	G.D.L.							
X	EXPERIMENTAL RELEASE	3/25/64									
				MARKING, TERMINAL BOARD, OSC. BAND #1							
SYM	DESCRIPTION	DATE	CH. NO.	DRAFTS	CHECKER	ENG. APP.					
UNLESS OTHERWISE SPECIFIED: DIMENSIONS ARE IN INCHES TOLERANCES ON FRAC. ± 1/64 DEC. ± .005 ANGLES ± 1/2°		SCALE: 2:1	MAXIMUM ALLOWABLE TOLERANCES HAVE BEEN DETERMINED AND ANY DEVIATIONS WILL BE CAUSE FOR REJECTION. REMOVE ALL BURRS AND SHARP EDGES			TYPE & TEMPER	HEAT TREAT. SPEC.	FINISH & SPEC. NO.	G.D.L.	⊙	Roc
								DRAWN	CHECKED	FINAL APPROVAL	
								<i>Ringer</i>			
								ELEC. DES. APP.	MECH. DES. APP.	LD 1466 Ø	



THE CONTENTS OF THIS DRAWING ARE THE EXCLUSIVE PROPERTY OF THE TECHNICAL MATERIEL CORP. ITS UNAUTHORIZED USE OR REPRODUCTION IN WHOLE OR IN PART IS STRICTLY FORBIDDEN.

REQ. PER UNIT	USED ON		
	MODEL	ASS'Y. NO.	DATE
1	HFR-1A	A 3494	2-24-64
1	HFR-2	A 3494	

LD 1467 0.



MARKING PROCESS: AS PER TMC SPECIFICATION S-727

NOTES ~ ① ALL LETTERING TO BE  $\frac{3}{32}$ " HIGH BLACK GOTHIC.  
 ② LETTER GROUPS TO BE CENTERED ON HOLES.

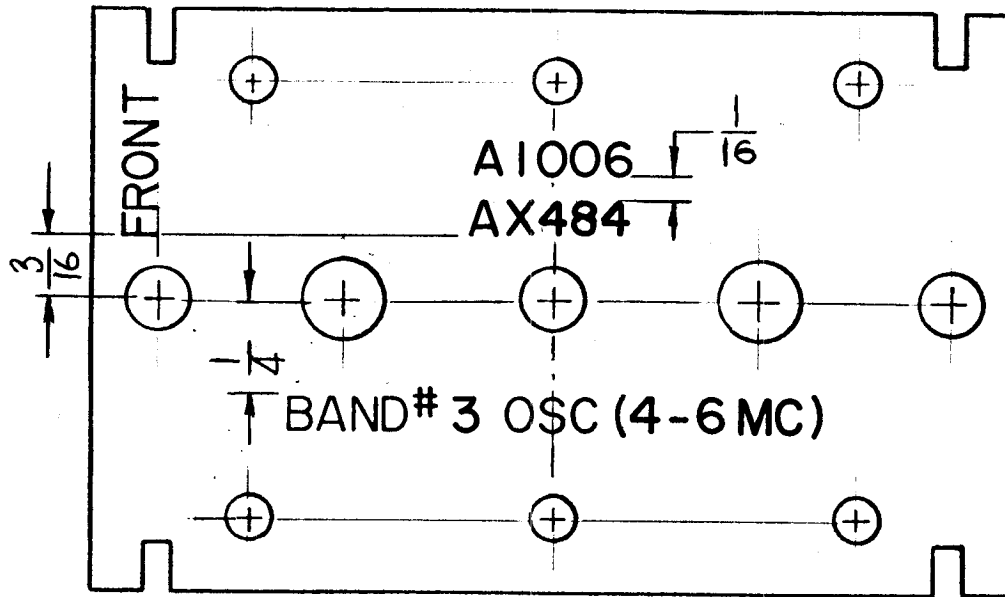
REF. PX 650

REQ.	ITEM	PART NO.	ANGER	DESCRIPTION	SYMBOL								
				THE TECHNICAL MATERIEL CORP. MAMARONECK, NEW YORK									
Ø	ORIGINAL RELEASE FOR PRODUCTION	8-13-64	G. Del										
X	EXPERIMENTAL RELEASE	3/25/64	Del	MARKING, TERMINAL BOARD OSC.									
SYM	DESCRIPTION	DATE	CH. NO.	DRAFTS	CHECKER	ENG. APP.	MATERIAL						
UNLESS OTHERWISE SPECIFIED:		SCALE: DO NOT SCALE				G.D.L.		DRAWN		CHECKED		FINAL APPROVAL	
DIMENSIONS ARE IN INCHES		MAXIMUM ALLOWABLE TOLERANCES HAVE BEEN DETERMINED AND ANY DEVIATIONS WILL BE CAUSE FOR REJECTION.				TYPE & TEMPER		HEATTREAT. SPEC.		ELEC. DES. APP.		MECH. DES. APP.	
TOLERANCES ON		REMOVE ALL BURRS AND SHARP EDGES				FINISH & SPEC. NO.		J. Anger				LD 1467 Ø	
FRAC. ± 1/64 DEC. ± .005 ANGLES ± 1/2°													

THE CONTENTS OF THIS DRAWING ARE THE EXCLUSIVE PROPERTY OF THE TECHNICAL MATERIEL CORP. ITS UNAUTHORIZED USE OR REPRODUCTION IN WHOLE OR IN PART IS STRICTLY FORBIDDEN.

REQ. PER UNIT	USED ON		
	MODEL	ASS'Y. NO.	DATE
1	HFR-1A	A 3496	2-24-64
1	HFR-2	A 3496	

LD 1468 Ø



MARKING PROCESS: AS PER TMC SPECIFICATION S-727

NOTES ~ ① ALL LETTERING TO BE  $\frac{3}{32}$ " HIGH BLACK GOTHIC.

② LETTER GROUPS TO BE CENTERED ON HOLES.

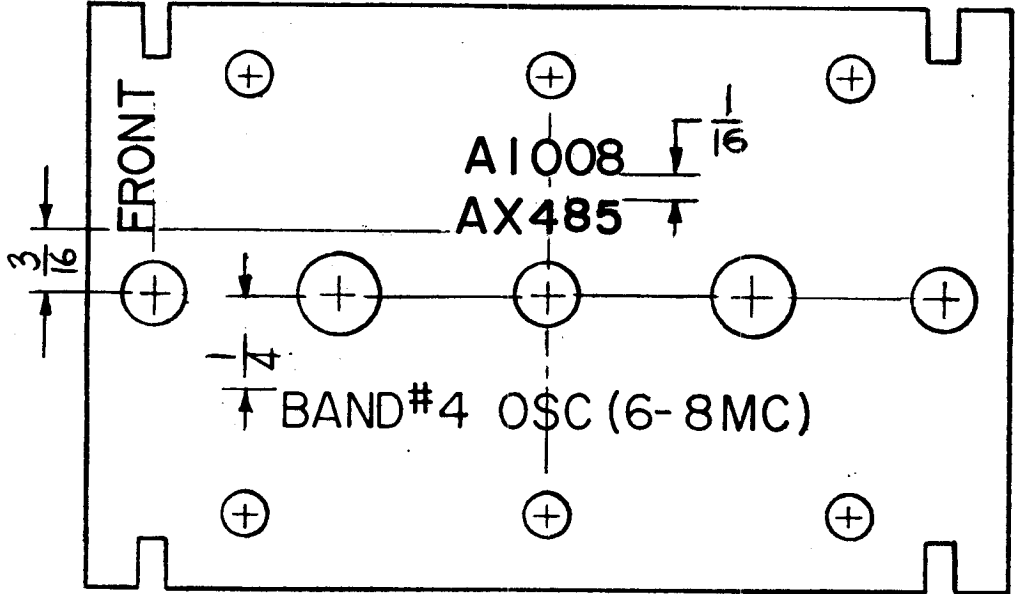
REF: PX 650

REQ.	ITEM	PART NO.	ANGER	DESCRIPTION	SYMBOL					
Ø	ORIGINAL RELEASE FOR PRODUCTION	8-13-64	<i>G. D. L.</i>	THE TECHNICAL MATERIEL CORP. MAMARONECK, NEW YORK						
X	EXPERIMENTAL RELEASE	3-26-64	<i>Delia</i>	MARKING, TERMINAL BOARD, OSC.						
SYM	DESCRIPTION	DATE	CH. NO.	DRAFTS	CHECKER	ENG. APP.	MATERIAL	BAND #3		
UNLESS OTHERWISE SPECIFIED:		SCALE: 2:1		TYPE & TEMPER		HEATTREAT. SPEC.		G.O.D.L.	<i>RDC</i>	
DIMENSIONS ARE IN INCHES		MAXIMUM ALLOWABLE TOLERANCES HAVE BEEN DETERMINED AND ANY DEVIATIONS WILL BE CAUSE FOR REJECTION.		FINISH & SPEC. NO.		ELEC. DES. APP.		MECH. DES. APP.	LD 1468	Ø
TOLERANCES ON		REMOVE ALL BURRS AND SHARP EDGES								
FRAC. ± 1/64 DEC. ± .005 ANGLES ± 1/2°										

THE CONTENTS OF THIS DRAWING ARE THE EXCLUSIVE PROPERTY OF THE TECHNICAL MATERIEL CORP. ITS UNAUTHORIZED USE OR REPRDUCTION IN WHOLE OR IN PART IS STRICTLY FORBIDDEN.

REQ. PER UNIT	USED ON		
	MODEL	ASSY. NO.	DATE
1	HFR-1A	A 3498	2-24-64
1	HFR-2	A 3498	

LD 1469  $\emptyset$



MARKING PROCESS: AS PER TMC SPECIFICATION S-727

NOTES ~ ① ALL LETTERING TO BE  $3/32$ " HIGH BLACK GOTHIC.  
 ② LETTER GROUPS TO BE CENTERED ON HOLES.

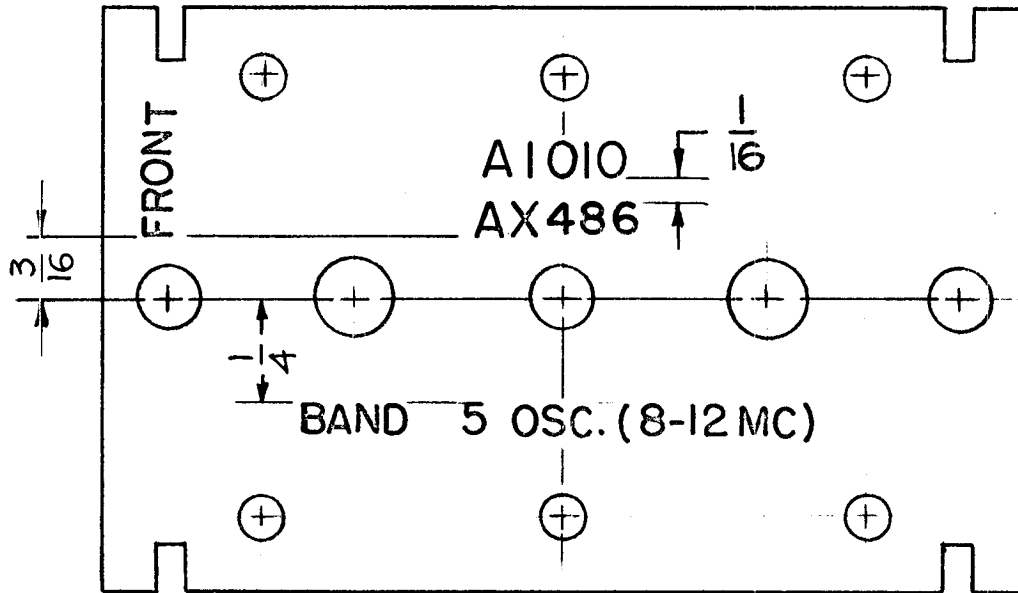
REF. PX 650

REQ.	ITEM	PART NO.	ANGER	DESCRIPTION	SYMBOL	
$\emptyset$	ORIGINAL RELEASE FOR PRODUCTION	B-13-64	<i>Saly</i>			
X	EXPERIMENTAL RELEASE	3-26-64	<i>Saly</i>			
SYM	DESCRIPTION	DATE	CH. NO.	DRAFTS	CHECKER	ENG. APP.
UNLESS OTHERWISE SPECIFIED: DIMENSIONS ARE IN INCHES TOLERANCES ON FRAC. $\pm 1/64$ DEC. $\pm .005$ ANGLES $\pm 1/2^\circ$		SCALE: 2:1		MAXIMUM ALLOWABLE TOLERANCES HAVE BEEN DETERMINED AND ANY DEVIATIONS WILL BE CAUSE FOR REJECTION. REMOVE ALL BURRS AND SHARP EDGES		
		TYPE & TEMPER	HEATTREAT. SPEC.	DRAWN	CHECKED	FINAL APPROVAL
		FINISH & SPEC. NO.		G.D.L.	<i>@</i>	<i>ATC</i>
				<i>Janger</i>		LD 1469 $\emptyset$
				ELEC. DES. APP.	MECH. DES. APP.	

THE CONTENTS OF THIS DRAWING ARE THE EXCLUSIVE PROPERTY OF THE TECHNICAL MATERIEL CORP. ITS UNAUTHORIZED USE OR REPRODUCTION IN WHOLE OR IN PART IS STRICTLY FORBIDDEN.

REQ. PER UNIT	USED ON		
	MODEL	ASS'Y. NO.	DATE
1	HFR-1A	A 3500	2-25-64
1	HFR-2	A 3500	

LD 1470 Ø



MARKING PROCESS: AS PER TMC SPECIFICATION S-727

NOTES:

- 1- ALL LETTERING TO BE  $\frac{3}{32}$  HIGH BLACK GOTHIC.
- 2- LETTER GROUPS TO BE CENTERED ON HOLES.

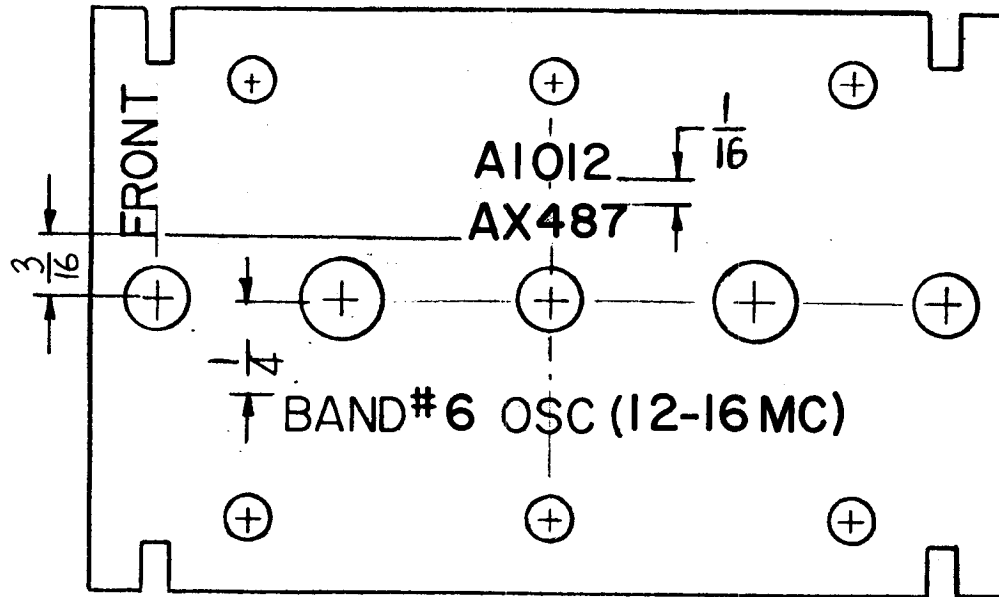
REF. PX 650

REQ.	ITEM	PART NO.	ANGER	DESCRIPTION	SYMBOL	
Ø	ORIGINAL RELEASE FOR PRODUCTION	B-1364	<i>G.D.L.</i>	THE TECHNICAL MATERIEL CORP. MAMARONECK, NEW YORK.		
X	EXPERIMENTAL RELEASE	3-26-64	<i>Chy</i>	MARKING, TERMINAL BOARD, OSC. BAND #5		
SYM	DESCRIPTION	DATE	CH. NO.	DRAFTS	CHECKER	ENG. APP.
UNLESS OTHERWISE SPECIFIED: DIMENSIONS ARE IN INCHES TOLERANCES ON FIN. ± 1/64 DEC. ± .005 ANGLES ± 1/2°		SCALE: 2:1		MAXIMUM ALLOWABLE TOLERANCES HAVE BEEN DETERMINED AND ANY DEVIATIONS WILL BE CAUSE FOR REJECTION. REMOVE ALL BURRS AND SHARP EDGES		
		TYPE & TEMPER	HEAT TREAT SPEC.	DRAWN	CHECKED	FINAL APPROVAL
		FINISH & SPEC. NO.		<i>Janger</i>		LD 1470 Ø

THE CONTENTS OF THIS DRAWING ARE THE EXCLUSIVE PROPERTY OF THE TECHNICAL MATERIEL CORP. ITS UNAUTHORIZED USE OR REPRODUCTION IN WHOLE OR IN PART IS STRICTLY FORBIDDEN.

REQ. PER UNIT	USED ON		
	MODEL	ASS'Y. NO.	DATE
1	HFR-1A	A-3502	2-25-64
1	HFR-2	A-3502	

LD 1471 Ø.



MARKING PROCESS: AS PER TMC SPECIFICATION S-727

- NOTES ~ ① ALL LETTERING TO BE 3/32" HIGH BLACK GOTHIC.  
 ② LETTER GROUPS TO BE CENTERED ON HOLES.

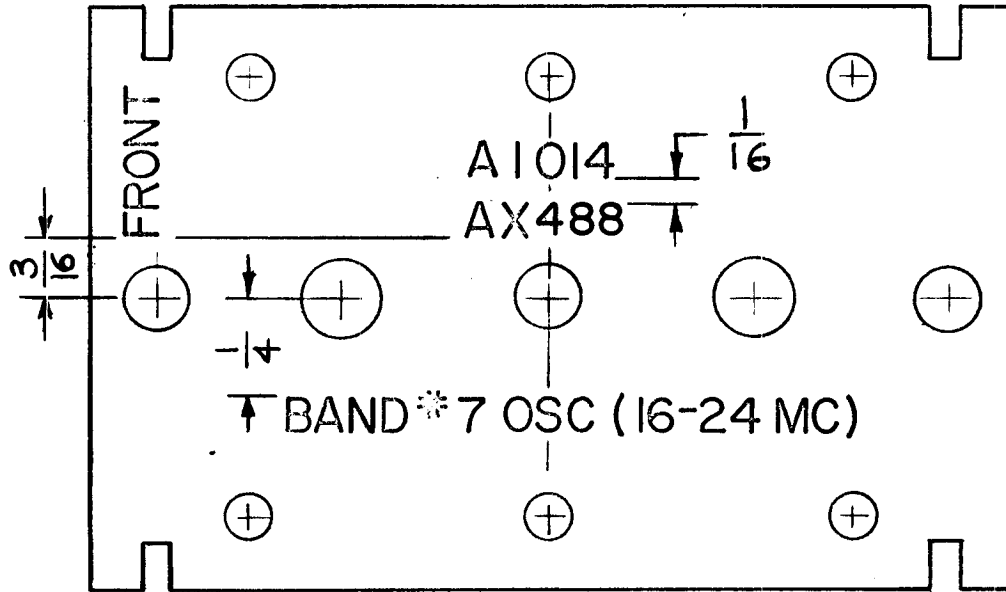
REF: PX 650

REQ.	ITEM	PART NO.	ANGER		DESCRIPTION	SYMBOL
					THE TECHNICAL MATERIEL CORP. MAMARONECK, NEW YORK	
Ø	ORIGINAL RELEASE FOR PRODUCTION	8-13-64	sbh		MARKING, TERMINAL BOARD, OSC.	
X	EXPERIMENTAL RELEASE	3-26-64	deh		BAND #6	
SYM	DESCRIPTION	DATE	CH. NO.	DRAFTS	CHECKER	ENG. APP.
UNLESS OTHERWISE SPECIFIED:		SCALE: 2:1		G.D.L.		
DIMENSIONS ARE IN INCHES		MAXIMUM ALLOWABLE TOLERANCES HAVE BEEN DETERMINED AND ANY DEVIATIONS WILL BE CAUSE FOR REJECTION. REMOVE ALL BURRS AND SHARP EDGES		DRAWN		
TOLERANCES ON				CHECKED		
FRAC. ± 1/64 DEC. ± .005 ANGLES ± 1/2°				FINAL APPROVAL		
				LD 1471 Ø		
				ELEC. DES. APP. MECH. DES. APP.		

ALL RIGHTS OF THIS DRAWING ARE THE EXCLUSIVE PROPERTY OF THE TECHNICAL MATERIEL CORP. ITS UNAUTHORIZED USE OR REPRODUCTION IN WHOLE OR IN PART IS STRICTLY FORBIDDEN.

REQ. PER UNIT	USED ON		
	MODEL	ASS'Y. NO.	DATE
1	HFR-1A	A 3504	2-25-64
1	HFR-2	A 3504	

LD 1472 Ø



NOTES:

- 1- ALL LETTERING TO BE  $\frac{3}{32}$  HIGH BLACK GOTHIC.
- 2- LETTER GROUPS TO BE CENTERED ON HOLES.

MARKING PROCESS: AS PER TMC SPECIFICATION S-727

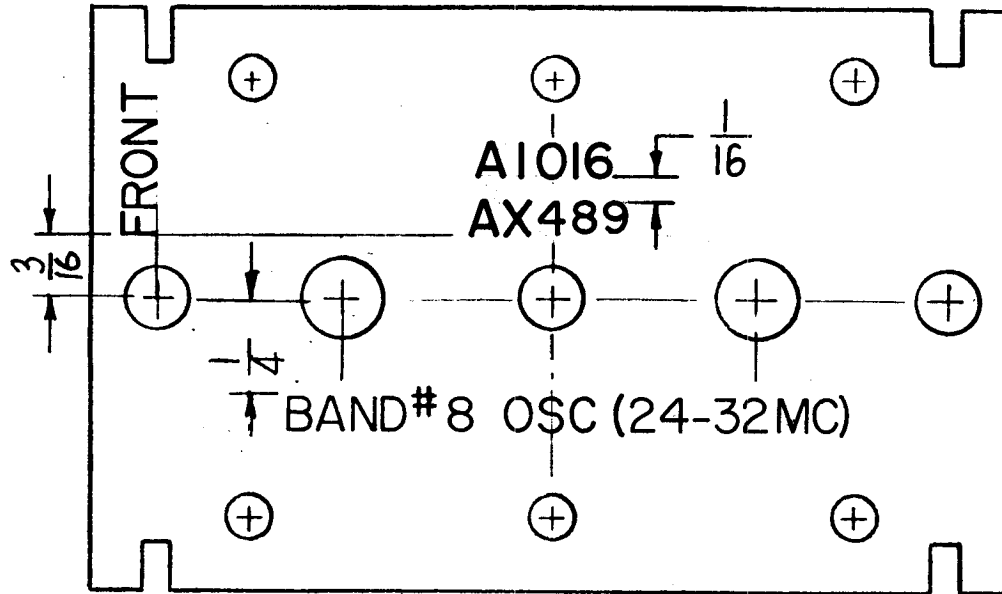
REF. PX 650

REQ.	ITEM	PART NO.	ANGER	DESCRIPTION	SYMBOL					
Ø	ORIGINAL RELEASE FOR PRODUCTION	8-13-64		THE TECHNICAL MATERIEL CORP. MAMARONECK, NEW YORK						
X	EXPERIMENTAL RELEASE	3-26-64		MARKING, TERMINAL BOARD, OSC.						
SYM	DESCRIPTION	DATE	CH. NO.	DRAFTS	CHECKER	ENG. APP.	MATERIAL	BAND * 7		
UNLESS OTHERWISE SPECIFIED:		SCALE: 2:1		G.D.L.		@	RTL			
DIMENSIONS ARE IN INCHES		MAXIMUM ALLOWABLE TOLERANCES HAVE BEEN DETERMINED AND ANY DEVIATIONS WILL BE CAUSE FOR REJECTION.		TYPE & TEMPER		HEATTREAT. SPEC.		DRAWN	CHECKED	FINAL APPROVAL
TOLERANCES ON		REMOVE ALL BURRS AND SHARP EDGES		FINISH & SPEC. NO.		ELEC. DES. APP.		MECH. DES. APP.		LD 1472 Ø
FAC. ± 1/64 DEC. ± .005 ANGLES ± 1/2°										

THE CONTENTS OF THIS DRAWING ARE THE EXCLUSIVE PROPERTY OF THE TECHNICAL MATERIEL CORP. ITS UNAUTHORIZED USE OR REPRODUCTION IN WHOLE OR IN PART IS STRICTLY FORBIDDEN.

REQ. PER UNIT	USED ON		
	MODEL	ASSY. NO.	DATE
1	HFR-1A	A 3506	2-25-64
1	HFR-2	A 3506	

LD 1473  $\emptyset$



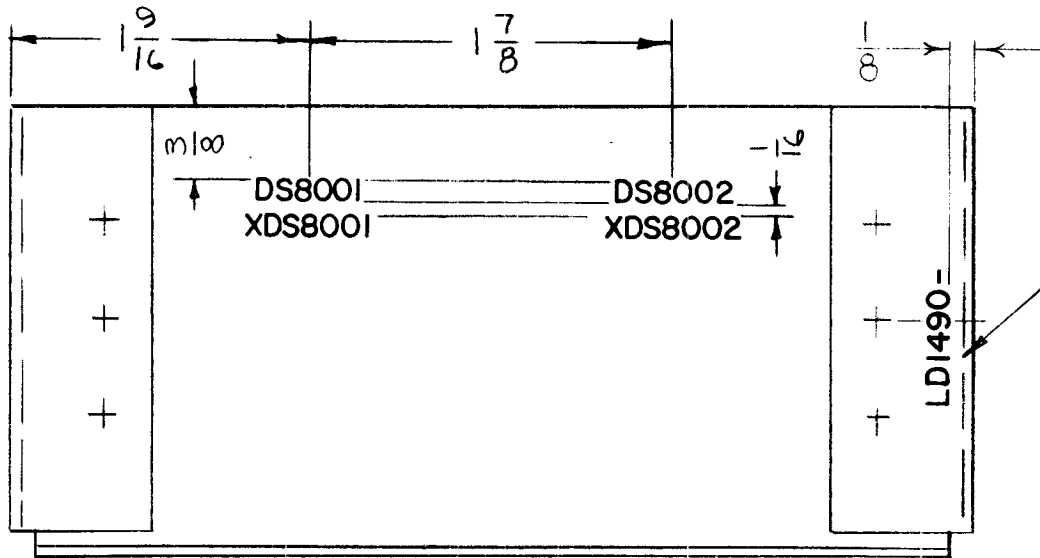
MARKING PROCESS: AS PER TMC SPECIFICATION S-727

NOTES ~ ① ALL LETTERING TO BE  $\frac{3}{32}$ " HIGH BLACK GOTHIC.  
 ② LETTER GROUPS TO BE CENTERED ON HOLES.

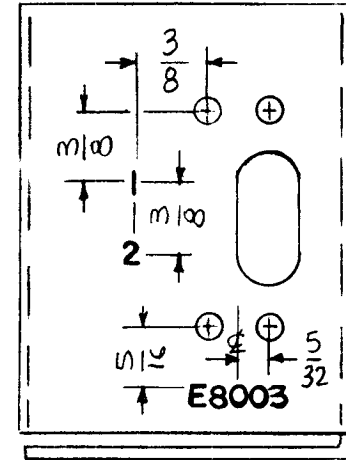
REF. PX 650

						REQ.	ITEM	PART NO.	ANGER.	DESCRIPTION	SYMBOL
$\emptyset$	ORIGINAL RELEASE FOR PRODUCTION	8-13-64		<i>Del</i>					THE TECHNICAL MATERIEL CORP. MAMARONECK, NEW YORK		
X	EXPERIMENTAL RELEASE	3-26-64		<i>Del</i>					MARKING, TERMINAL BOARD, OSC. BAND # 8		
SYM	DESCRIPTION	DATE	CH. NO.	DRAFTS	CHECKER	ENG. APP.			G.D.L.	@	<i>KAC</i>
UNLESS OTHERWISE SPECIFIED: DIMENSIONS ARE IN INCHES TOLERANCES ON FRAC. $\pm 1/64$ DEC. $\pm .005$ ANGLES $\pm 1/2^\circ$		SCALE: 2:1 MAXIMUM ALLOWABLE TOLERANCES HAVE BEEN DETERMINED AND ANY DEVIATIONS WILL BE CAUSE FOR REJECTION. REMOVE ALL BURRS AND SHARP EDGES							DRAWN	CHECKED	FINAL APPROVAL
									<i>Junger</i>		
									ELEC. DES. APP.	MECH. DES. APP.	LD 1473 $\emptyset$

REQ. PER UNIT	USED ON			LDI490	Q
	MODEL	ASS'Y. NO.	DATE		
1	RAK-110-2	BMA 155	9-20-66		



MARK TMC P/N  
1/8 HIGH GOTHIC  
W/LATEST REV.  
LETTER.



MARKING PROCESS: AS PER TMC SPECIFICATION S-727.

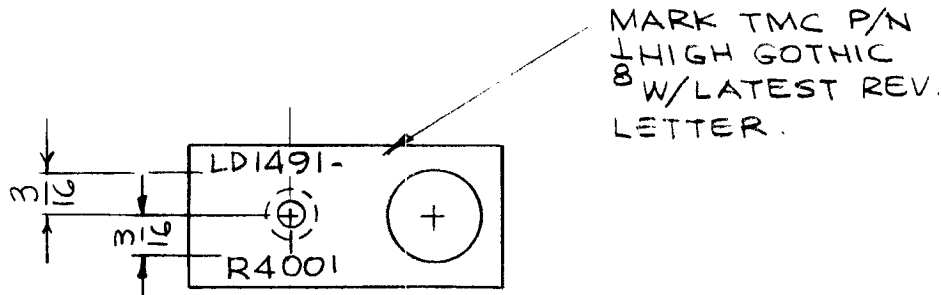
LETTERING: 1/8 HIGH BLACK GOTHIC, LOCATED AS SHOWN.

REF: MS 5020

REQ.	ITEM	PART NO.	F. BUDETTI DESCRIPTION				SYMBOL
Q	ORIGINAL RELEASE FOR PRODUCTION		12.1.66				
XI	ADD LOC. DIM. FOR TMC PT. NO		11/28/66				
X	EXP. RELEASE		9-20-66	X			
SYM	DESCRIPTION	DATE	CH. NO.	DRAFTS	CHECKER	ENG. APP.	
UNLESS OTHERWISE SPECIFIED DIMENSIONS ARE IN INCHES AND INCLUDE CHEMICALLY APPLIED OR PLATED FINISHES		SCALE	1:1				
DECIMALS .X ± .05 .XX ± .01 .XXX ± .005		TOLERANCES	FRACTIONS ± 1/64 ANGLES ± 0° 30'	CODE	A		
TYPE & TEMPER		HEAT TREAT. SPEC.	DRAWN		CHECKED	FINAL APPR VAL	
FINISH & SPEC. NO.		ELEC. DES. APP.	MECH. DES. APP.		LDI490 Q		



REQ. PER UNIT	USED ON			LD1491	Ø
	MODEL	ASS'Y. NO.	DATE		
1	TCP-3		9-20-66		



MARKING PROCESS: AS PER TMC SPECIFICATION S-727.

LETTERING: 1/8 HIGH BLACK GOTHIC, LOCATED AS SHOWN.

REF. MS 3284-50

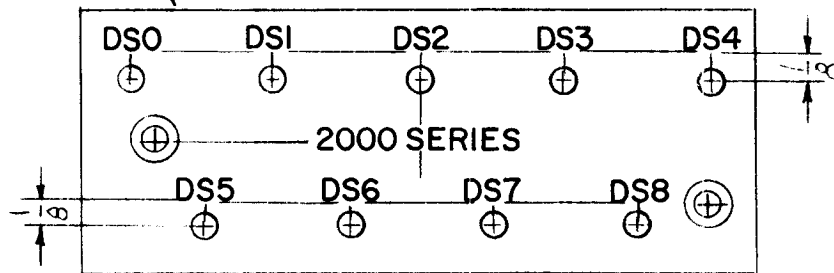
REQ. ITEM	PART NO.	F. BUDETTI DESCRIPTION				SYMBOL
		THE TECHNICAL MATERIEL CORP. MAMARONECK, NEW YORK				
		MARKING BRACKET MTG. TERMINAL				
		MATERIAL				
		TYPE & TEMPER HEAT TREAT. SPEC.				
		DRAWN				
		CHECKED				
		FINAL APPROVAL				
		FINISH & SPEC. NO.				
		ELEC. DES. APP. MECH. DES. APP.				
		LD1491				Ø

Ø	PRODUCTION	3-10-67		L.A.R.		
X	EXP. RELEASE	9-20-66	X	<i>M</i>	<i>W</i>	<i>W</i>
SYM	DESCRIPTION	DATE	CH. NO.	DRAFTS	CHECKER	ENG. APP.
UNLESS OTHERWISE SPECIFIED DIMENSIONS ARE IN INCHES AND INCLUDE CHEMICALLY APPLIED OR PLATED FINISHES		SCALE	1:1			
DECIMALS .X ± .05 .XX ± .01 .XXX ± .005	TOLERANCES	FRACTIONS ± 1/64 ANGLES ± 0° 30'	CODE	A		

REQ. PER UNIT	USED ON			LD1493	Ø
	MODEL	ASS'Y. NO.	DATE		
1	TLAA-2.5K	A5491	9-28-66		

MARK TMC P/N (LD1493)  
1/8 HIGH GOTHIC W/LATEST  
REV LETTER. (ON REAR)



FRONT VIEW

MARKING PROCESS: AS PER TMC SPECIFICATION S-727.

LETTERING: 1/8 HIGH BLACK GOTHIC, LOCATED AS SHOWN.

REF: PX1000

SYM	DESCRIPTION	DATE	CH. NO.	DRAFTS	CHECKER	ENG. APP.	REQ. ITEM	PART NO.	F. BUDETTI DESCRIPTION	SYMBOL	
Ø	ORIGINAL RELEASE FOR PRODUCTION	11/10/66	Ø	CV					<b>THE TECHNICAL MATERIEL CORP.</b> MAMARONECK. NEW YORK  MARKING, BOARD SUPPORT BULBS AS PER TMC SPEC S727	Ø	
X1	NO'S RE-ARRANGED, DS ADDED	10-11-66	X1	MC	MC	QZ		STOCK SIZE			
X	EXP. RELEASE	9-28-66	X	MS		AA		MATERIAL			
								TYPE & TEMPER HEAT TREAT. SPEC.			
UNLESS OTHERWISE SPECIFIED DIMENSIONS ARE IN INCHES AND INCLUDE CHEMICALLY APPLIED OR PLATED FINISHES		SCALE		1:1					DRAWN	CHECKED	FINAL APPROVAL
DECIMALS .X ± .05 .XX ± .01 .XXX ± .005	TOLERANCES	FRACTIONS ± 1/64 ANGLES ± 0° 30'	CODE A								LD1493
							FINISH & SPEC. NO.	ELEC. DES. APP.	MECH. DES. APP.		

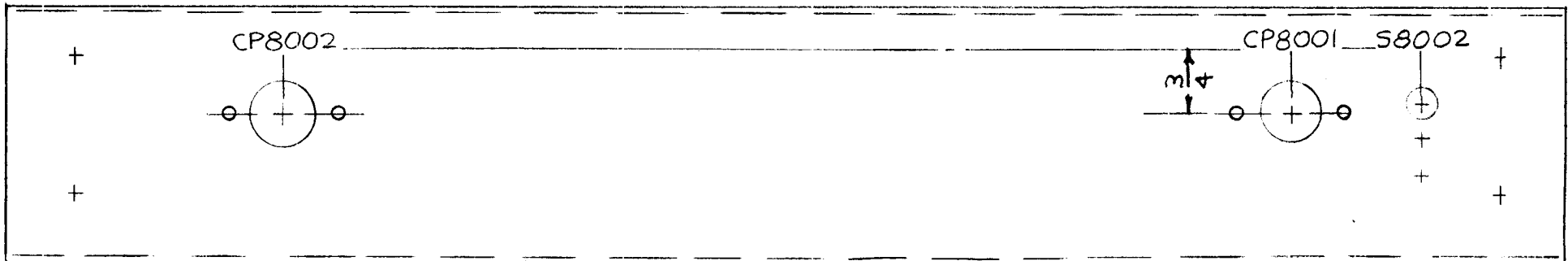
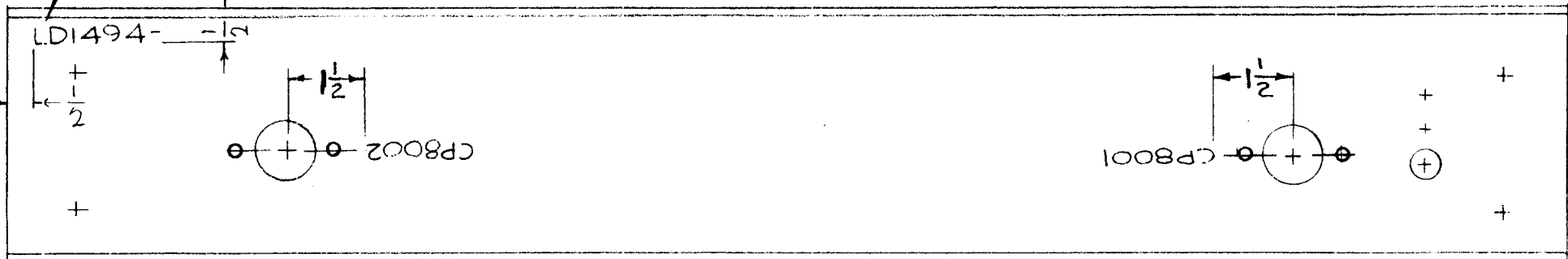
MARKING PROCESS: AS PER TMC SPECIFICATION S-727.

LETTERING: 1/8 HIGH BLACK GOTHIC, LOCATED AS SHOWN

REQ. PER UNIT	USED ON		
	MODEL	ASS'Y. NO.	DATE
1	RAK-110-2	BMA154	10-7-66
1	RAK-111-2	BMA154	10-10-66

LD1494 A

MARK TMC P/N  
1/8 HIGH GOTHIC  
W/LATEST REV  
LETTER.



A ALL MARKING RELOCATED 9/4/67 18507 JG JQ FB REF: MS3751							REQ. ITEM	PART NO.	F. BUDETTI	DESCRIPTION	SYMBOL	
Q	ORIGINAL RELEASE FOR PRODUCTION	12.1.66	+	JG	JQ	FB			THE TECHNICAL MATERIEL CORP. MAMARONECK, NEW YORK			
X2	ADD LOC. DIM. FOR TMC PT. NO.	11/28/66	+	JG				STOCK SIZE	MARKING, PANEL, FIXED FILTER			
X1	DWG WAS -1 & 2, AF107 OBS.	10-11-66	X1	JG	WY	003			AS PER TMC SPEC-S727			
X	EXP. RELEASE	10-10-66	X	JG	WY	003						
SYM	DESCRIPTION	DATE	CH. NO.	DRAFTS	CHECKER	ENG. APP.	MATERIAL					
UNLESS OTHERWISE SPECIFIED DIMENSIONS ARE IN INCHES AND INCLUDE CHEMICALLY APPLIED OR PLATED FINISHES		SCALE		1:2			TYPE & TEMPER		HEAT TREAT. SPEC.	DRAWN	CHECKED	FINAL APPROVAL
DECIMALS .X ± .05 .XX ± .01 .XXX ± .005	TOLERANCES	FRACTIONS ± 1/64 ANGLES ± 0° 30'	CODE	A								
FINISH & SPEC. NO.							ELEC. DES. APP.	MECH. DES. APP.	LD1494 A			