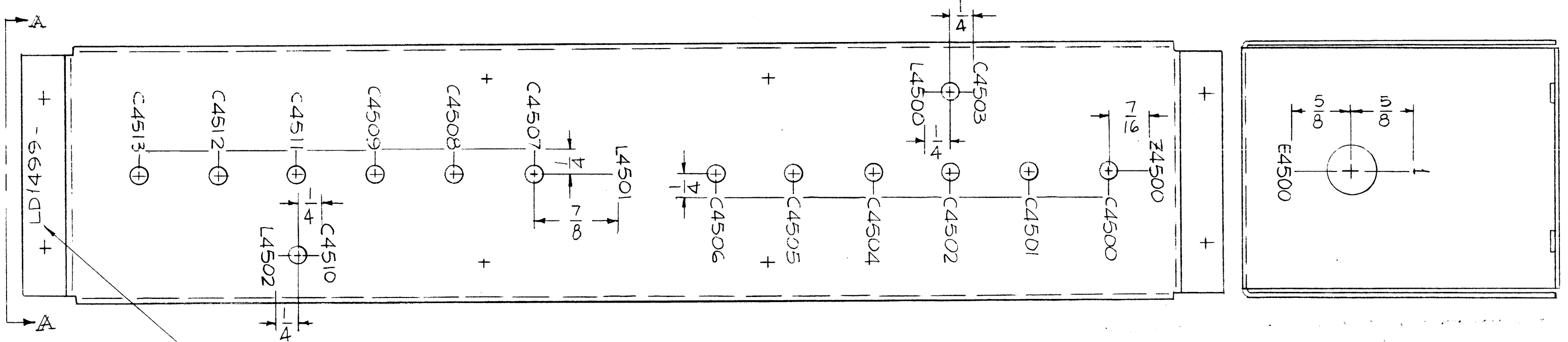


VIEW - A-A



MARK TMC P/N  
1/8 HIGH GOTHIC  
W/LATEST REV  
LETTER.

MARKING PROCESS: AS PER TMC SPECIFICATION S-727.

LETTERING: 1/8 HIGH BLACK GOTHIC, LOCATED AS SHOWN.

NOTES

1	TFP-2.5K	
Q'TY./UNIT	MODEL USED ON	ASS'Y. NO.
SCALE	CODE	S401-451
	A	S401-
		S401-

THE CONTENTS OF THIS DRAWING ARE THE EXCLUSIVE PROPERTY OF THE TECHNICAL MATERIEL CORP. ITS UNAUTHORIZED USE OR REPRODUCTION IN WHOLE OR IN PART IS STRICTLY FORBIDDEN.

REF: M55066.

REQ'D.	ITEM	PART NUMBER	DESCRIPTION	SYMBOL
F. BUDETTI LIST OF MATERIAL				
MATERIAL		THE TECHNICAL MATERIEL CORP. MAMARONECK, NEW YORK		
FINISH		TITLE MARKING BOX, FILTER AS PER TMC SPEC, S-727		
UNLESS OTHERWISE SPECIFIED DIMENSIONS ARE IN INCHES AND INCLUDE CHEMICALLY APPLIED OR PLATED FINISHES		DRAWN <i>[Signature]</i>	DATE 9-30-66	FINAL APPROVAL <i>[Signature]</i>
DECIMALS .X ± .05 .XX ± .01 .XXX ± .005		TOLERANCES		DATE 6/9/73
FRACTI NS ± 1/64 ANGLES ± 0° 30'		ELECT. DES. <i>[Signature]</i>		DATE
		MECH. DES.		DATE
		SHEET		REV. LTR.

LD1499

REVISIONS					
SYM	DESCRIPTION	DATE	E.M.N. NO.	DRAFT	CHKD
X	EXP. RELEASE		X	<i>[Signature]</i>	<i>[Signature]</i>
Ø	ORIGINAL RELEASE	5/9/73		CS	<i>[Signature]</i>