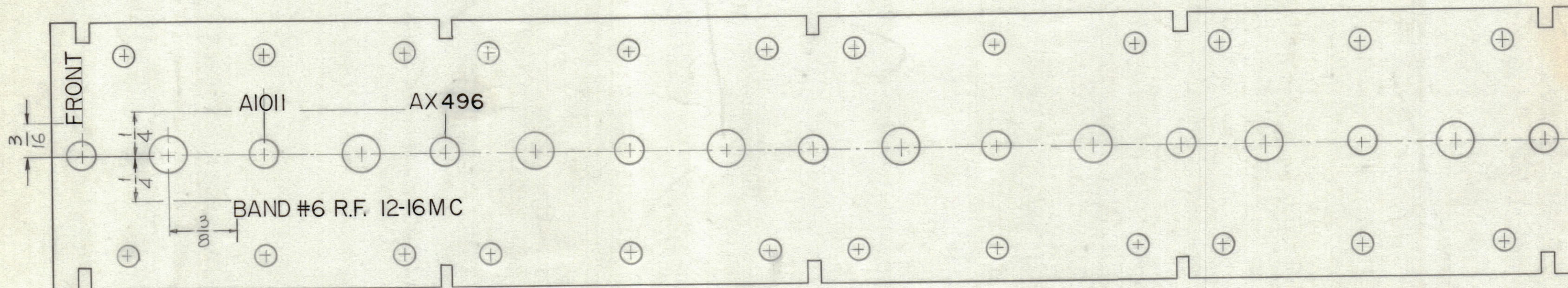


**NOTICE TO PERSONS RECEIVING THIS DRAWING**

THE TECHNICAL MATERIEL CORPORATION claims proprietary right in the material disclosed hereon. This drawing is issued in confidence for engineering information only and may not be reproduced or used to manufacture anything shown hereon without permission from THE TECHNICAL MATERIEL CORPORATION to the user. This drawing is loaned for mutual assistance and is subject to recall at any time.

Property of:  
**THE TECHNICAL MATERIEL CORPORATION**  
 MAMARONECK, NEW YORK

REVISIONS						
ZONE	SYM	DESCRIPTION	DATE	E.M.N. NO.	DRAFT	CHKD APPD
	X	EXPERIMENTAL RELEASE	3-30-64		<i>Daly</i>	
	Ø	ORIGINAL RELEASE FOR PRODUCTION	8-13-64		<i>Daly</i>	



UNLESS OTHERWISE SPECIFIED - 3/32" HIGH  
 1 - 3/32 HIGH BLACK LUSTERLESS GOTHIC LETTERING.  
 (MARKING PROCESS: AS PER T.M.C. SPECIFICATION S-727)  
 2 - LETTER GROUPS TO BE CENTERED ON HOLES

LD-1480 Ø

REF: PX 649

Q'TY./UNIT	MODEL USED ON	ASS'Y. NO.
1	HFR-2	A-3551
1	HFR-1A	A-3551
SCALE	CODE	
2-1	A	

THE CONTENTS OF THIS DRAWING ARE THE EXCLUSIVE PROPERTY OF THE TECHNICAL MATERIEL CORP. ITS UNAUTHORIZED USE OR REPRODUCTION IN WHOLE OR IN PART IS STRICTLY FORBIDDEN.

REQ'D.	ITEM	PART NUMBER	DESCRIPTION	SYMBOL
<b>ANGER LIST OF MATERIAL</b>				
MATERIAL			THE TECHNICAL MATERIEL CORP. MAMARONECK, NEW YORK	
FINISH			TITLE MARKING, R.F. TERMINAL BOARD BAND #6	
UNLESS OTHERWISE SPECIFIED DIMENSIONS ARE IN INCHES AND INCLUDE CHEMICALLY APPLIED OR PLATED FINISHES			DRAWN G.D.L.	DATE 3-16-64
DECIMALS .X ± .05 .XX ± .01 .XXX ± .005			CHECKED @	DATE 8-14-64
FRACTIONS ± 1/64 ANGLES ± 0° 30'			ELECT. DES. <i>Jugen</i>	DATE 3/30/64
TOLERANCES			MECH. DES.	DATE
SHEET				LD-1480
REV. LTR.				Ø

NOTES