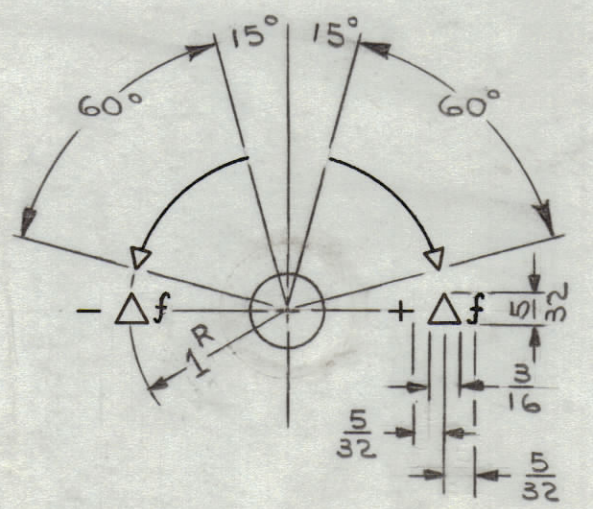
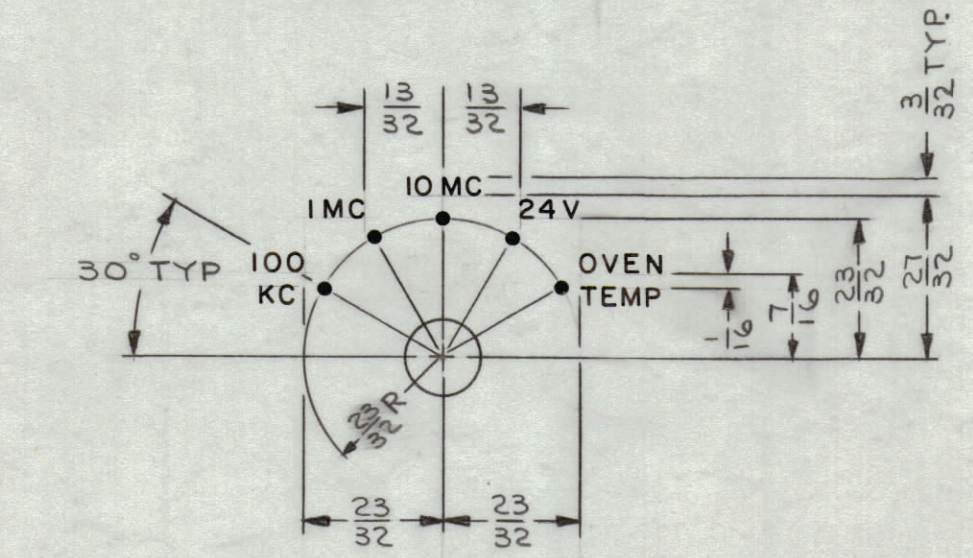
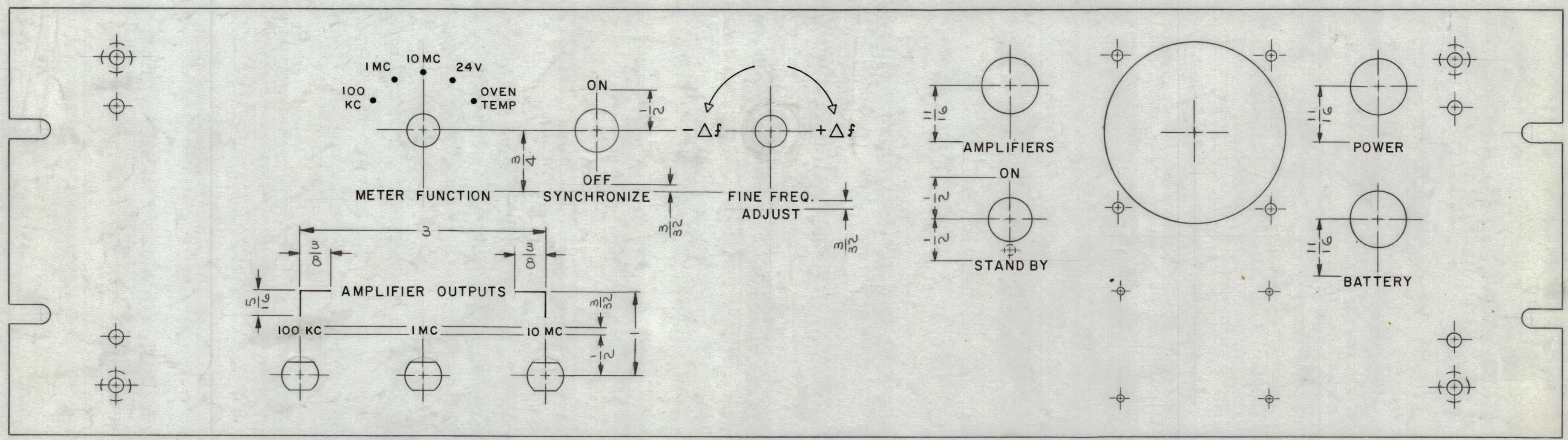


REVISIONS						
ZONE	SYM	DESCRIPTION	DATE	E.M.N. NO.	DRAFT	CHKD APPD
D-4,3	X1	1 R OF FINE FREQ ADJ. DETAIL WAS 13/16 R	1-24-64		NP	
#	Ø	ORIGINAL RELEASE FOR PRODUCTION	6/25/64	Ø	A.M.	
E6,5	A	3 HOLES REVISED TO AGREE W/ MS3708-A	1.4.65	13214	JB	



FRONT VIEW AS SHOWN

HEIGHT OF LETTERS	DEPTH OF STROKE	WIDTH OF STROKE
3/32	.010	.015
1/8	.010	.020
DOTS	.010	1/16 DIA
LINEWORK	.010	.015
ARROWHEADS	.010	

- ~ UNLESS OTHERWISE SPECIFIED ~
- 1- ENGRAVING TO BE 1/8 HIGH GOTHIC, WHITE FILLED.
  - 2- ALL LETTER GROUPS TO BE CENTERED ON HOLES.
  - 3- DOTS 100KC THRU 10MC TO BE RED FILLED, ALL OTHERS TO BE FILLED IN WHITE.
  - 4- LINEWORK TO BE WHITE FILLED, WITH EXCEPTION OF BRACKETS 5/16 X 3/8 OF AMPLIFIER OUTPUTS WHICH ARE TO BE FILLED IN RED.
  - 5- ARROWHEADS & ALL OTHER SYMBOLS TO BE WHITE FILLED.

REF: MS 3708

REQ'D.	ITEM	PART NUMBER	DESCRIPTION	SYMBOL
M. GELLMAN LIST OF MATERIAL				
MATERIAL		THE TECHNICAL MATERIEL CORP. MAMARONECK, NEW YORK		
FINISH		TITLE MARKING, PANEL, FRONT MARKING METHOD-ENGRAVING		
UNLESS OTHERWISE SPECIFIED DIMENSIONS ARE IN INCHES AND INCLUDE CHEMICALLY APPLIED OR PLATED FINISHES		DRAWN J. LESHINSKI	DATE 12/30/63	FINAL APPROVAL [Signature]
DECIMALS .X ± .05 .XX ± .01 .XXX ± .005		CHECKED [Signature]	DATE 6-24-64	DATE 12-30-63
FRACTIONS ± 1/64		ELECT. DES. [Signature]	DATE 1-3-64	DATE 12-30-63
ANGLES ± 0° 30'		MECH. DES. [Signature]	DATE 1-3-64	DATE 12-30-63
SHEET 1 OF 2				LD 1442 A

1	CSS-2	
Q'TY./UNIT	MODEL USED ON	ASS'Y. NO.
SCALE 1:1	CODE A	
THE CONTENTS OF THIS DRAWING ARE THE EXCLUSIVE PROPERTY OF THE TECHNICAL MATERIEL CORP. ITS UNAUTHORIZED USE OR REPRODUCTION IN WHOLE OR IN PART IS STRICTLY FORBIDDEN.		

NOTES