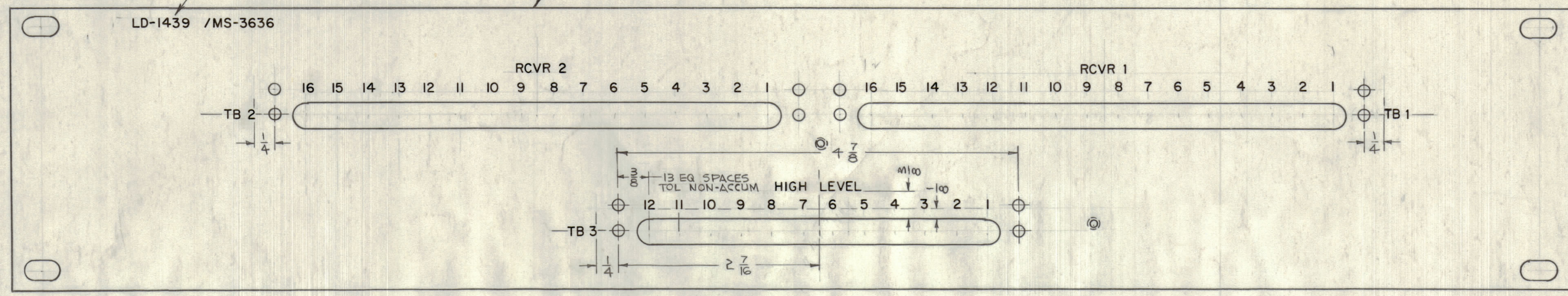


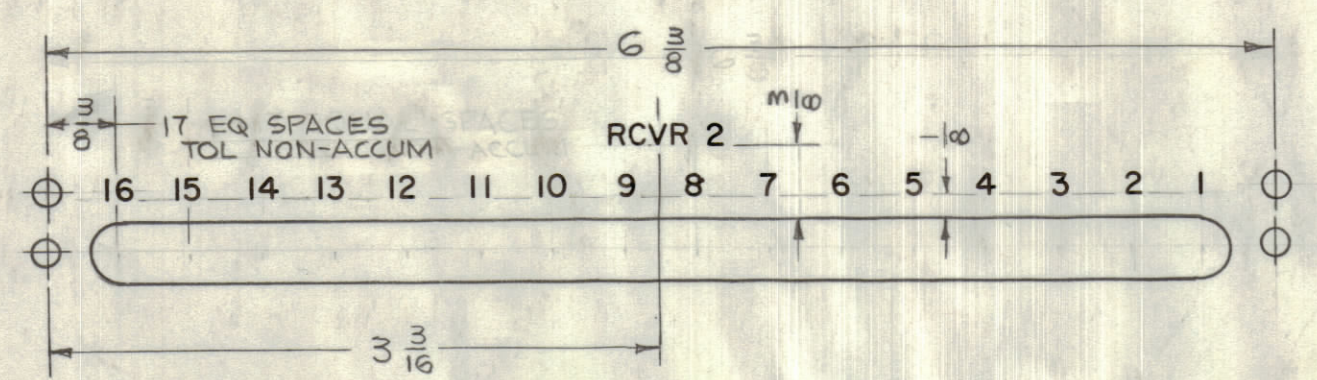
| REVISIONS |     |                                      |         |            |       |      |      |
|-----------|-----|--------------------------------------|---------|------------|-------|------|------|
| ZONE      | SYM | DESCRIPTION                          | DATE    | E.M.N. NO. | DRAFT | CHKD | APPD |
| X         | 1   | PANEL REDESIGNED, LOWER CUTOUT ADDED | 1-2-64  |            |       |      |      |
| Ø         |     | ORIGINAL RELEASE FOR PRODUCTION      | 6/14/65 |            | JC    |      |      |

MARK TMC PT NO. 1/8 HIGH BLACK GOTHIC W/LATEST REVISION LETTERS.



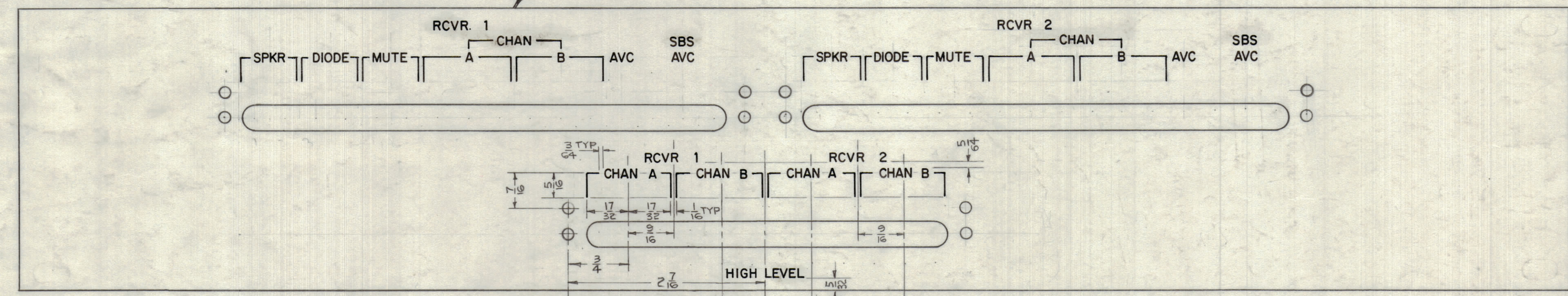
MARKING METHOD:  
PER TMC SPEC S-727

REAR OF PANEL SHOWN



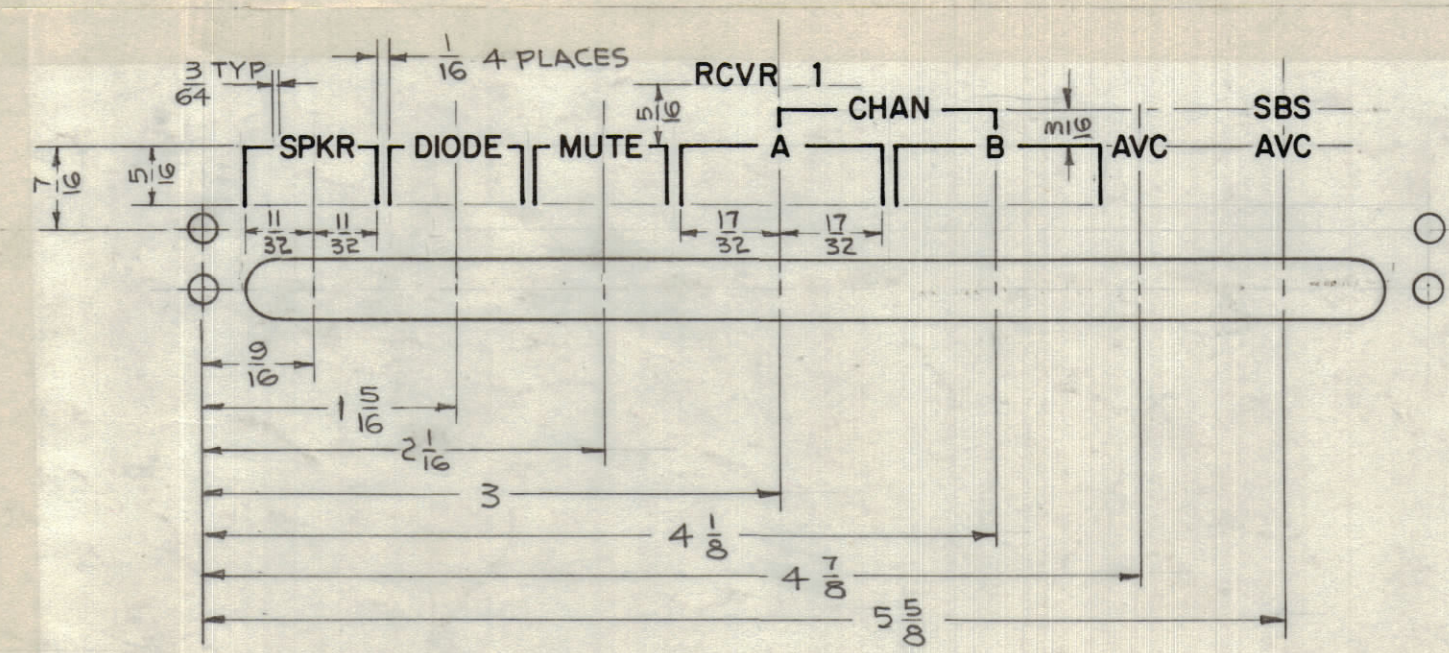
TYP DETAIL DIMENSIONS FOR "RCVR 1" & "RCVR 2"

LETTERING TO BE 1/8 HIGH BLACK, GOTHIC, PER TMC SPEC S-727 LOCATED AS SHOWN.



MARKING METHOD:  
ENGRAVING PER  
TMC SPEC S566

FRONT OF PANEL SHOWN.



TYP DETAIL DIMENSIONS FOR "RCVR 1" & "RCVR 2"

ENGRAVING CHART

| HEIGHT OF LETTER | DEPTH OF STROKE | WIDTH OF STROKE |
|------------------|-----------------|-----------------|
| 1/8              | .010            | .020            |
| LINES            | .010            | .015            |

ENGRAVING NOTES

1. ENGRAVING TO BE GOTHIC WHITE FILLED, SIZE AS SHOWN ON CHART.
2. ALL LETTERING TO BE WHITE FILLED.
3. ALL LINES TO BE WHITE FILLED.
4. ALL LETTERS AND LETTER GROUPS TO BE CENTERED ON DIMENSIONS OR LINES AS SHOWN.

REF: MS-3636

| REQ'D.  | ITEM   | PART NUMBER                                       | DESCRIPTION | SYMBOL         |
|---|--------|---|-------------|----------------|
| I JOHNSON LIST OF MATERIAL  |        |   |             |                |
| MATERIAL  |        | THE TECHNICAL MATERIEL CORP. MAMARONECK, NEW YORK |             |                |
| FINISH  |        | MARKING, OUTPUT PANEL                             |             |                |
| SCALE   | 1/1    | MODEL USED ON                                     | DATE        | FINAL APPROVAL |
| UNLESS OTHERWISE SPECIFIED DIMENSIONS ARE IN INCHES AND INCLUDE CHEMICALLY APPLIED OR PLATED FINISHES |        | DRAWN   | DATE        | DATE           |
| DECIMALS  | ± .05  | CHECKED   | DATE        | DATE           |
| FRACTIONS   | ± 1/64 | ELECT. DES.                                       | DATE        | DATE           |
| ANGLES  | ± 30'  | MECH. DES.  | DATE        | DATE           |
| TOLERANCES  |        | REV. LTR.   |             |                |

NOTES

THE CONTENTS OF THIS DRAWING ARE THE EXCLUSIVE PROPERTY OF THE TECHNICAL MATERIEL CORP. ITS UNAUTHORIZED USE OR REPRODUCTION IN WHOLE OR IN PART IS STRICTLY FORBIDDEN.

LD1439 Ø