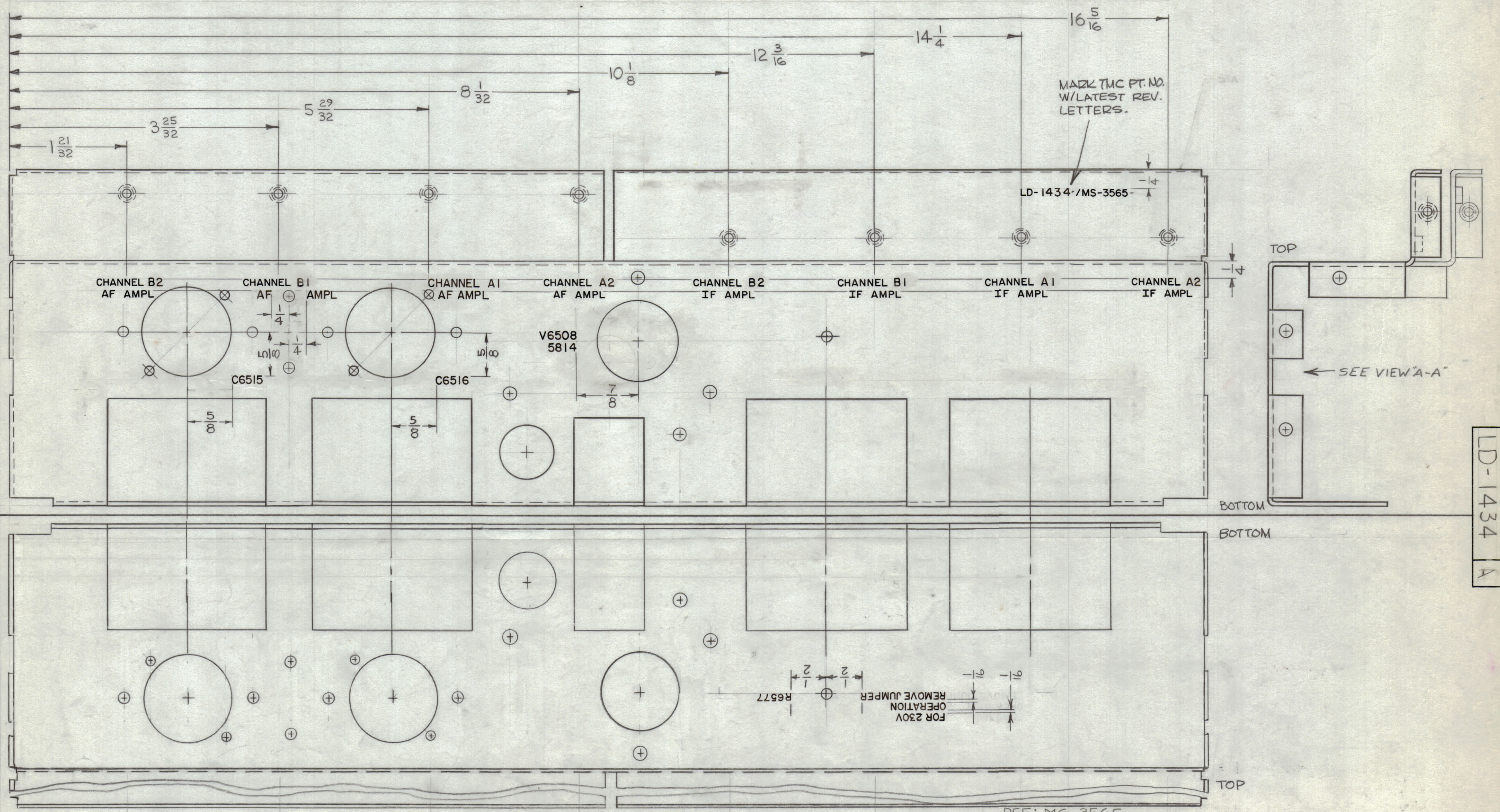


REVISIONS							
ZONE	SYM	DESCRIPTION	DATE	E.M.N. NO.	DRAFT	CHKD	APPD
E-6	EX	ADDED 1/4 DIM.	1-17-64	X-1	TR		
	O	ORIGINAL RELEASE FOR PRODUCTION	4-13-64	O	AM		
C4 E4	A	VIEW A-A, ADDED WITH LETTERING R6577 FOR 230V OPERATION REMOVE JUMPER	11/2/65	15018	H.V.		



VIEW "A-A"

UNLESS OTHERWISE SPECIFIED:
 MARKING PROCESS: AS PER TMC SPECIFICATION S-727.
 LETTERING: 3/32 HIGH BLACK GOTHIC, LOCATED AS SHOWN.

NOTES

QTY./UNIT	MODEL USED ON	ASSY. NO.
1	MSA-1	A-3404
SCALE	CODE	
1:1	A	

THE CONTENTS OF THIS DRAWING ARE THE EXCLUSIVE PROPERTY OF THE TECHNICAL MATERIEL CORP. ITS UNAUTHORIZED USE OR REPRODUCTION IN WHOLE OR IN PART IS STRICTLY FORBIDDEN.

REQ'D.	ITEM	PART NUMBER	DESCRIPTION	SYMBOL
T. AALTONEN LIST OF MATERIAL				
MATERIAL			THE TECHNICAL MATERIEL CORP. MAMARONECK, NEW YORK	
FINISH			TITLE MARKING, CHASSIS, ELECTRICAL, FRONT MARKING METHOD - PER S-727	
UNLESS OTHERWISE SPECIFIED DIMENSIONS ARE IN INCHES AND INCLUDE CHEMICALLY APPLIED OR PLATED FINISHES		DRAWN E. Jensen	DATE 11-8-63	FINAL APPROVAL [Signature]
DECIMALS .X ± .05 .XX ± .01 .XXX ± .005		CHECKED [Signature]	DATE 3-12-64	DATE 11-2-64
FRACTIONS ± 1/64 ANGLES ± 0° 30'		ELECT. DES. [Signature]	DATE 3-11-64	DATE 3-11-64
TOLERANCES		MECH. DES. [Signature]	DATE 3-11-64	DATE 3-11-64
			LD-1434	A
			SHEET	REV. LTR.

LD-1434
A