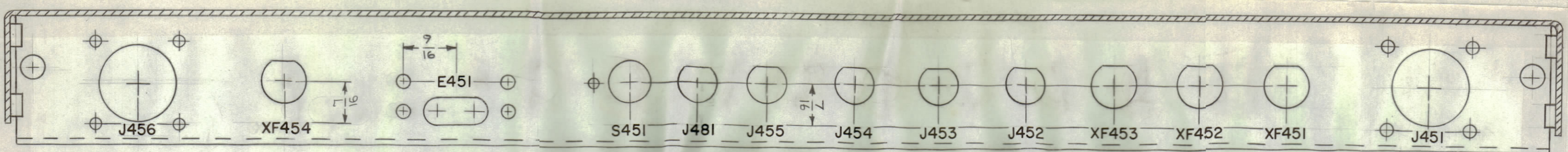
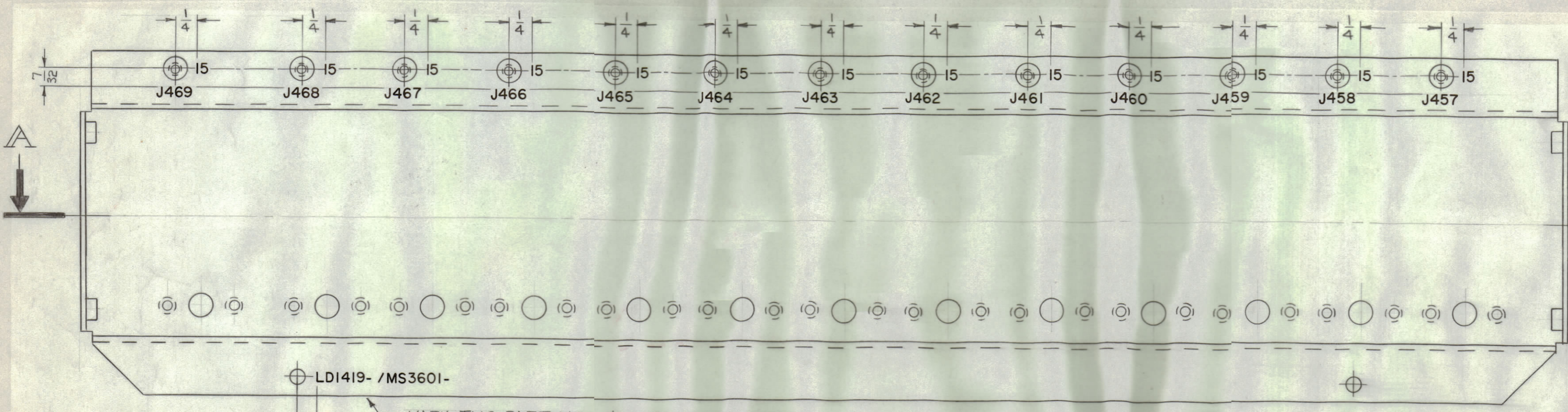


REVISIONS						
ZONE	SYM	DESCRIPTION	DATE	E.M.N. NO.	DRAFT	CHKD
#	Q	ORIGINAL RELEASE FOR PRODUCTION	7/7/64			
-	A	EXTERIOR VIEW WITH LETTERING A3313.... ADD.	8.12.64	12104	NB	MC
-	B	J481 ADD. (2 PL); SEE MS3601 REV. "A".	2.12.65	13405	RP	JB

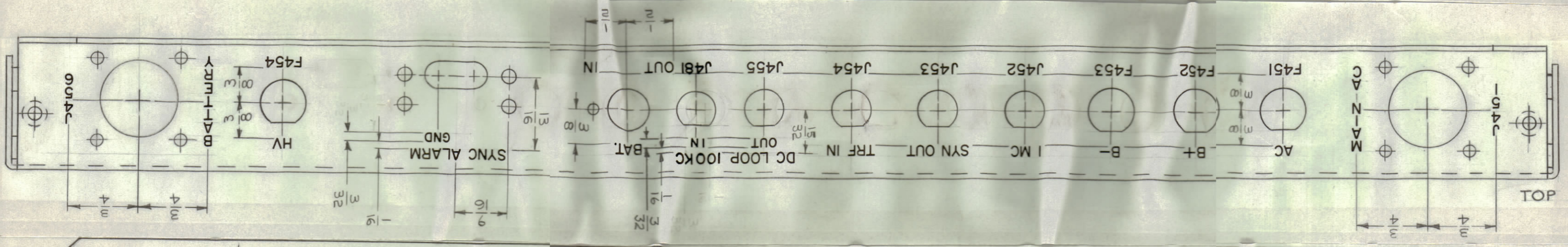


SECTION "A-A"

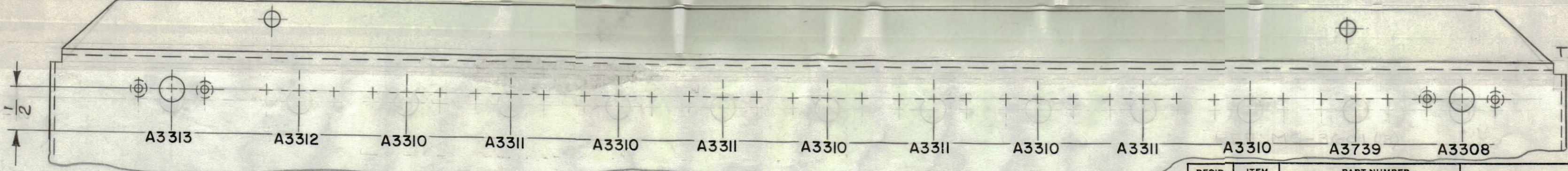


LDI419- /MS3601-

MARK TMC PART NO. 1/8 HIGH BLACK GOTHIC, WITH LATEST REVISION LETTERS.



EXTERIOR



REF:MS-3601(8)

UNLESS OTHERWISE SPECIFIED:
 MARKING PROCESS: AS PER TMC SPECIFICATION S-727.
 LETTERING: 1/8 HIGH BLACK GOTHIC, LOCATED AS SHOWN.

NOTES

1	LFS-1	
QTY./UNIT	MODEL USED ON	ASS'Y. NO.
SCALE 1:1	CODE A	

THE CONTENTS OF THIS DRAWING ARE THE EXCLUSIVE PROPERTY OF THE TECHNICAL MATERIEL CORP. ITS UNAUTHORIZED USE OR REPRODUCTION IN WHOLE OR IN PART IS STRICTLY FORBIDDEN.

REQ'D.	ITEM	PART NUMBER	DESCRIPTION	SYMBOL
M. GELLMAN LIST OF MATERIAL				
MATERIAL			THE TECHNICAL MATERIEL CORP. MAMARONECK, NEW YORK	
FINISH			TITLE MARKING, CHASSIS, MAIN-REAR MARKING METHOD-AS PER S-727	
UNLESS OTHERWISE SPECIFIED DIMENSIONS ARE IN INCHES AND INCLUDE CHEMICALLY APPLIED OR PLATED FINISHES		DRAWN 9.3.64	DATE 2-6-64	FINAL APPROVAL RAC
DECIMALS .X ± .05 .XX ± .01 .XXX ± .005		CHECKED @	DATE 1-27-64	
FRACTIONS ± 1/64 ANGLES ± 0° 30'		ELECT. DES. [Signature]	DATE	
TOLERANCES		MECH. DES. [Signature]	DATE 7-27-64	
			SHEET	LD-1419 B
			REV. LTR.	

LD-1419 B