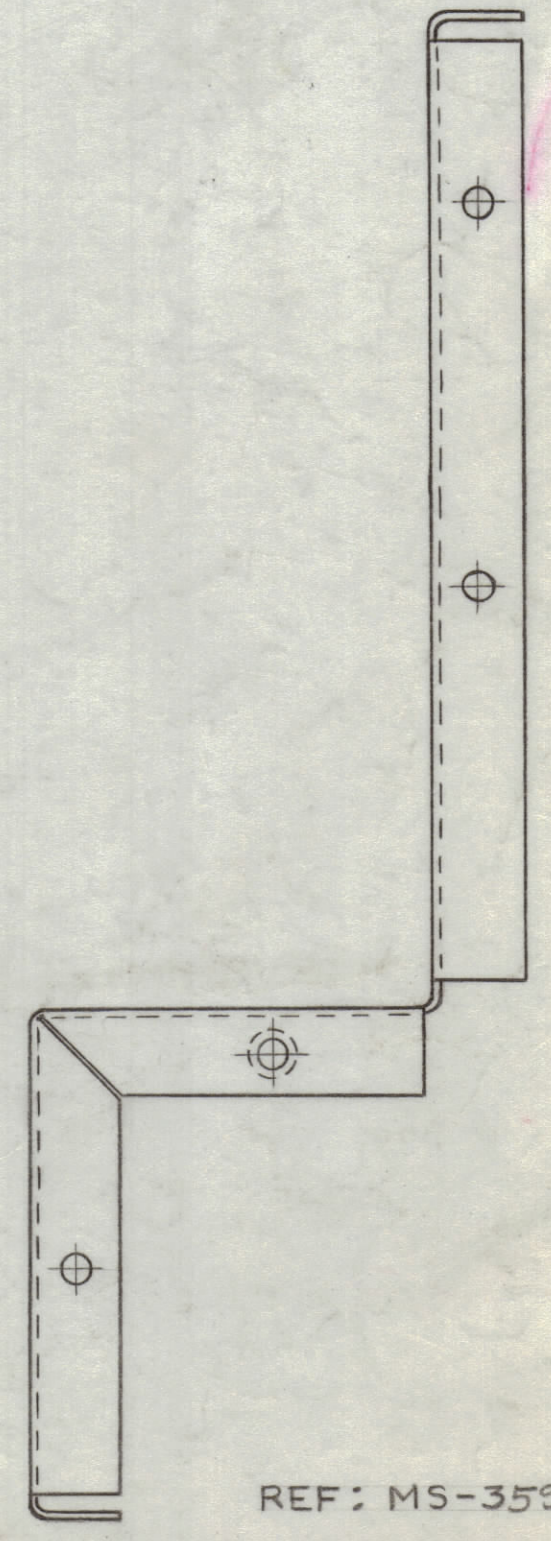
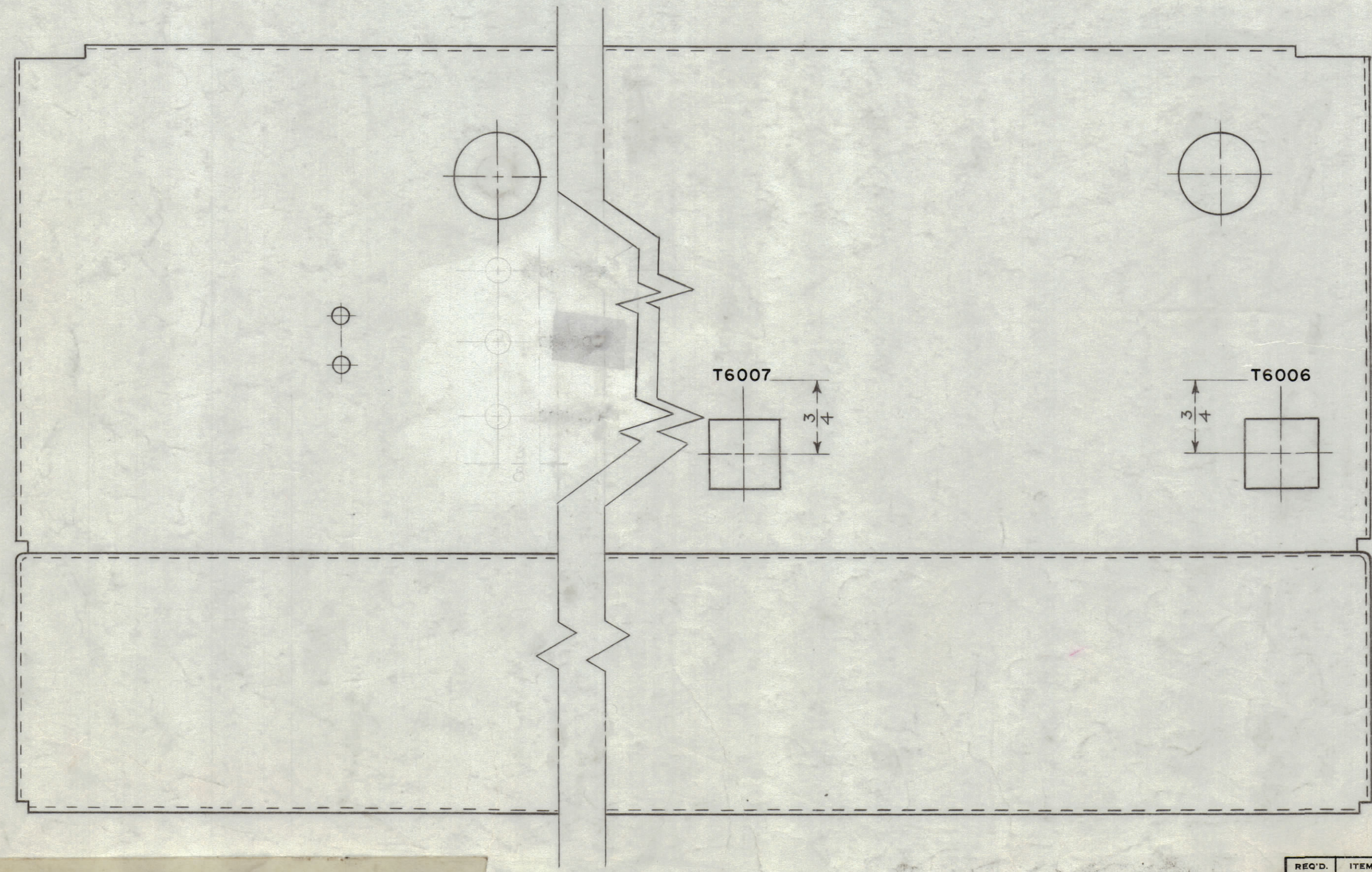
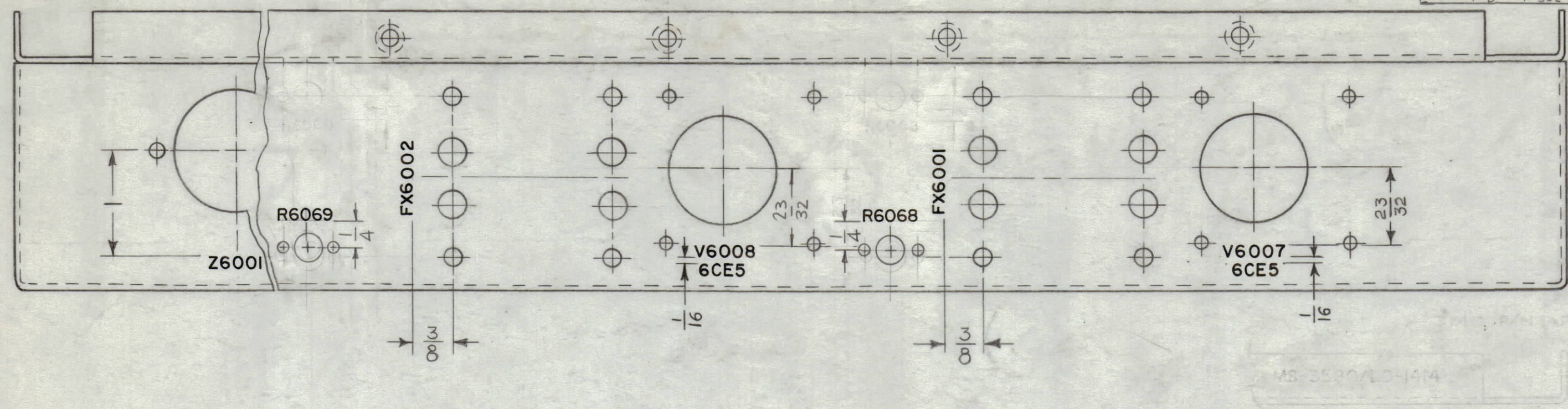


C	Holes for R6068 & R6069 added w/lett.	3-16-66	15936	W.P.	<i>[Signature]</i>
D	Holes for CR6005, CR6006 & CR6007 added	5-24-66	16271	C.H.	<i>[Signature]</i>
E	DELETED CR6005, CR6006 & CR6007.	3-8-66	17928	<i>[Signature]</i>	<i>[Signature]</i>
	R6068, R6069 re-located w/holes				

REVISIONS							
ZONE	SYM	DESCRIPTION	DATE	E.M.N. NO.	DRAFT	CHKD	APPD
	X1	MARKINGS ADDED & CLARIFIED	12/30	X1	N.P.	<i>[Signature]</i>	
	O	RELEASED FOR PRODUCTION	2/28/67	#	A.M.	<i>[Signature]</i>	
EL	A	"I" HOLE ENLARGED TO CONFORM WITH MS3590 REV. "B".	4/21/65	13965	JL	<i>[Signature]</i>	
	B	SEE SHEET 2 OF 2	7/1/65	14272	<i>[Signature]</i>	<i>[Signature]</i>	



MARKING PROCESS: AS PER TMC SPECIFICATION S-727.
 LETTERING: 1/8 HIGH BLACK GOTHIC, LOCATED AS SHOWN.
 ALL LETTER GROUPS TO BE CENTERED ON HOLES.

NOTES

1	MOG-1	
Q'TY./UNIT	MODEL USED ON	ASS'Y. NO.
SCALE 1:1	CODE A	

THE CONTENTS OF THIS DRAWING ARE THE EXCLUSIVE PROPERTY OF THE TECHNICAL MATERIEL CORP. ITS UNAUTHORIZED USE OR REPRODUCTION IN WHOLE OR IN PART IS STRICTLY FORBIDDEN.

REQ'D.	ITEM	PART NUMBER	DESCRIPTION	SYMBOL
Aaltoven LIST OF MATERIAL				
MATERIAL		THE TECHNICAL MATERIEL CORP. MAMARONECK, NEW YORK		
FINISH		TITLE MARKING, CHASSIS, REAR MARKING METHOD, TMC S-727		
DRAWN <i>N. Peters</i>		DATE 11-27-63	FINAL APPROVAL	
CHECKED <i>C. Tanni</i>		DATE 1-29-64	DATE 4/27/64	
ELECT. DES. <i>JKa</i>		DATE 1/29/64	LD-1414	
MECH. DES. <i>M. B. Stone</i>		DATE 2-17-64	SHEET 1 OF 2	

LD-1414



REF: MS-3590