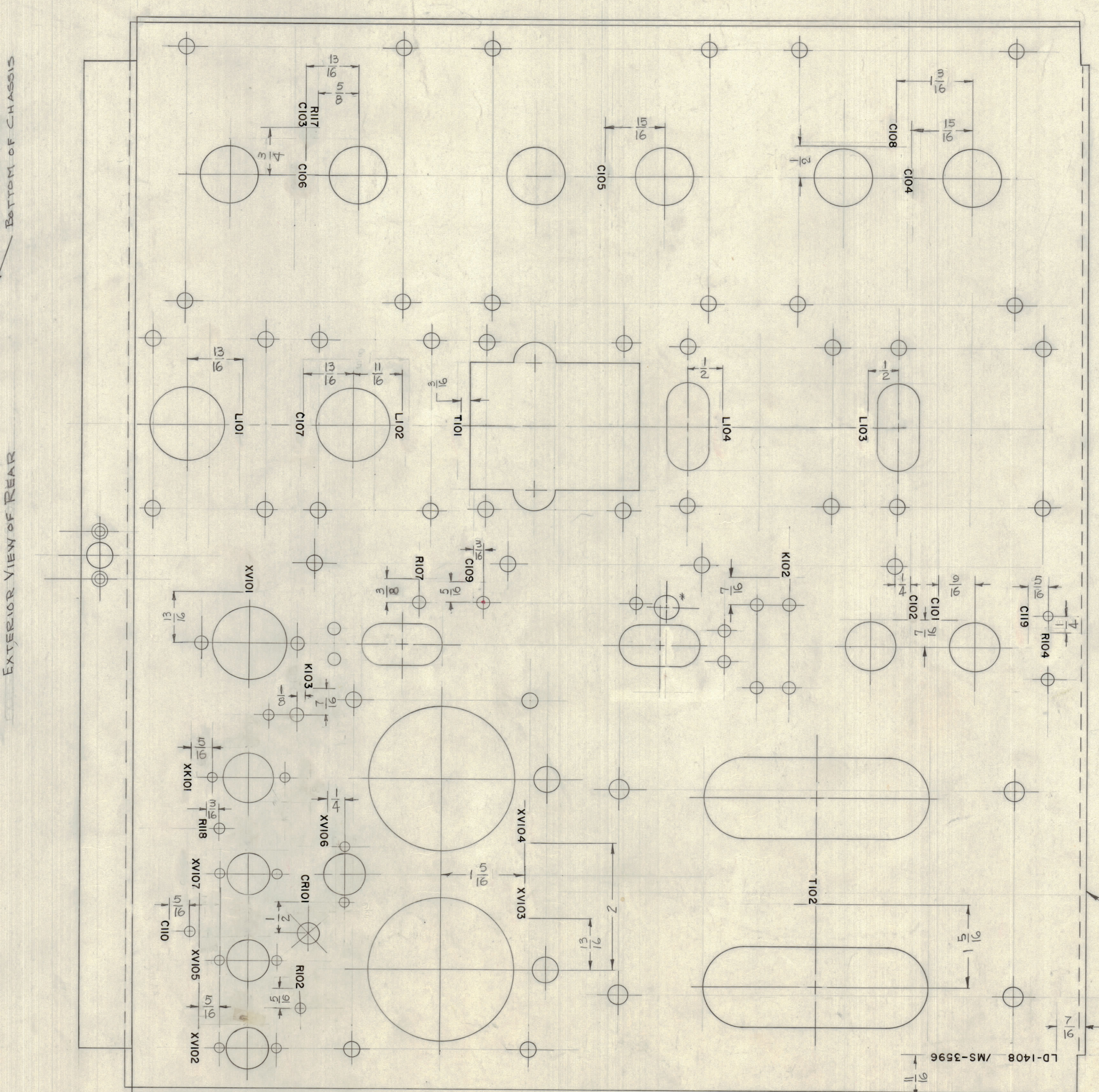
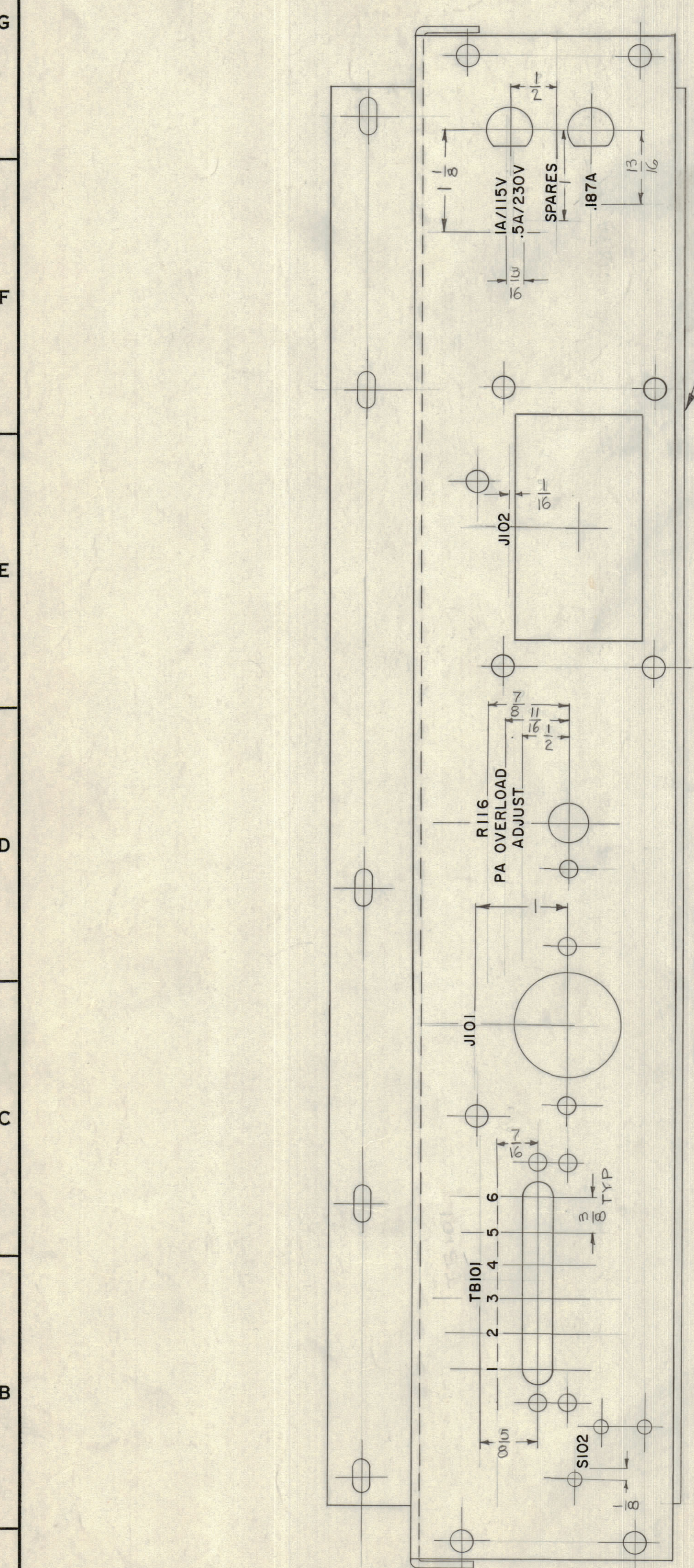


REVISIONS							
ZONE	BYM	DESCRIPTION	DATE	E.M.N. NO.	DRAFT	CHKD	APPD
D6	A	HOLE # ADDED TO COMPLY WITH MS3596	4-9-63	1649			



BOTTOM VIEW SHOWN

FRONT OF UNIT

- ~ UNLESS OTHERWISE SPECIFIED ~
- 1.- ALL LETTERING 1/8 HIGH BLACK GOTHIC
  - 2.- MARKING PROCESS: AS PER TMC SPEC. 5727 LOCATE APPROX. AS SHOWN.

REQ'D.	ITEM	PART NUMBER	DESCRIPTION	SYMBOL

REF: MS-3596

LIST OF MATERIAL				
MATERIAL	FINISH	TITLE	DATE	DATE
		THE TECHNICAL MATERIEL CORP. MAMARONECK, NEW YORK		
		MARKING, CHASSIS, ELECTRICAL (MAIN) MARKING PROCESS: AS PER TMC SPEC. 5727		

QTY./UNIT	MODEL USED ON	ASSY. NO.
1	PSP-350A	

SCALE	CODE
1/8"	

THE CONTENTS OF THIS DRAWING ARE THE EXCLUSIVE PROPERTY OF THE TECHNICAL MATERIEL CORP. ITS UNAUTHORIZED USE OR REPRODUCTION IN WHOLE OR IN PART IS STRICTLY FORBIDDEN.

DECIMALS	FRACTIONS	TOLERANCES
.X ± .05	± 1/64	
.XX ± .01	ANGLES	± 0° 30'
.XXX ± .005		

DRAWN	DATE	FINAL APPROVAL	DATE
	12/1/63		
CHECKED	DATE	ELECT. DES.	DATE
	12/26/63		
MECH. DES.	DATE	DATE	DATE

LD-1408 /MS-3596

LD-1408

SHEET 2 OF 2

NOTES

LD-1408 A