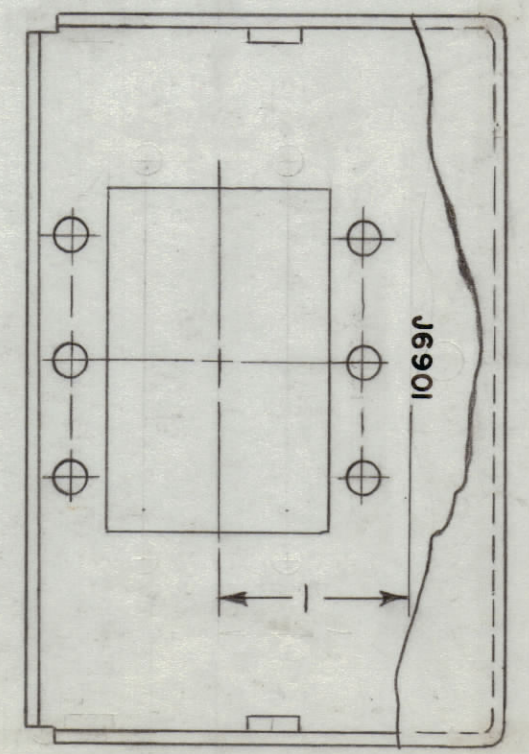
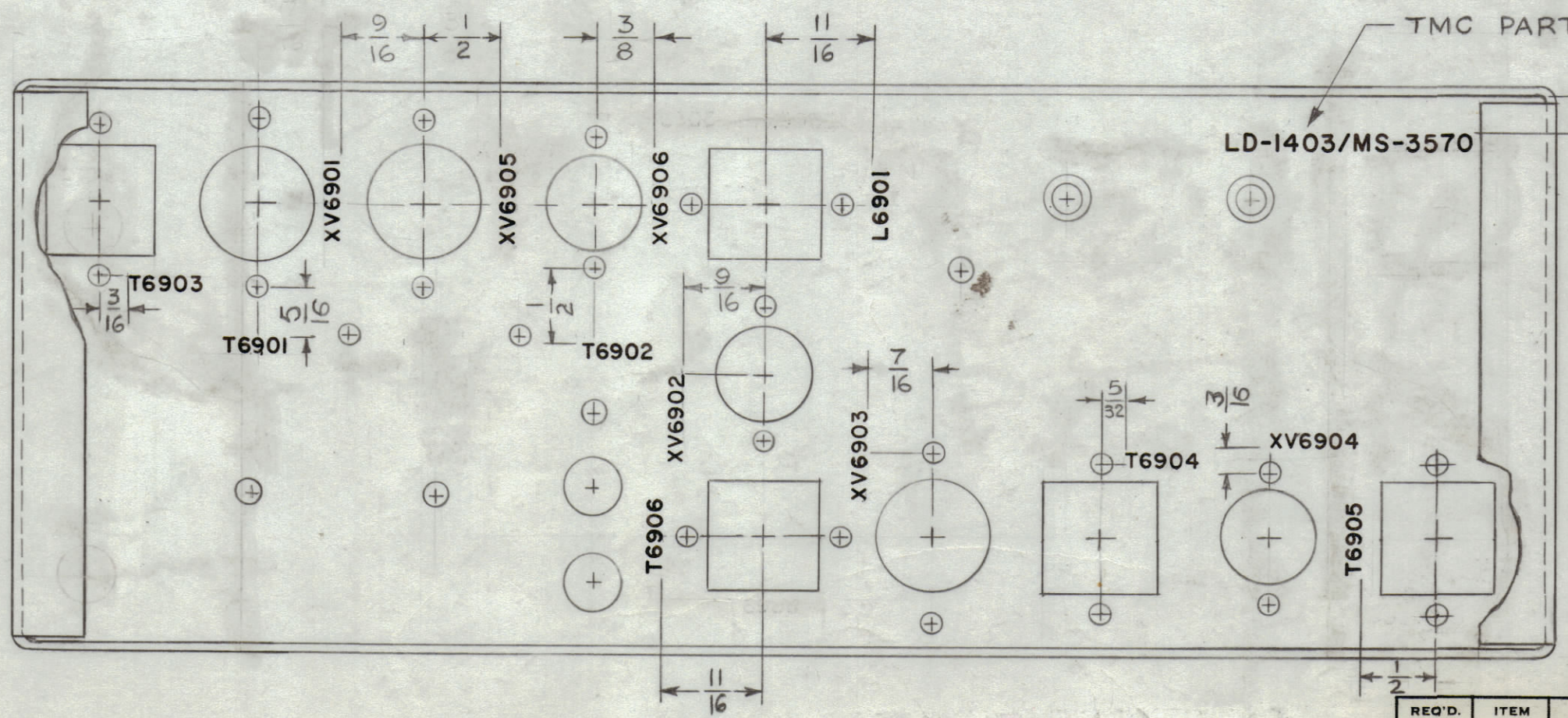
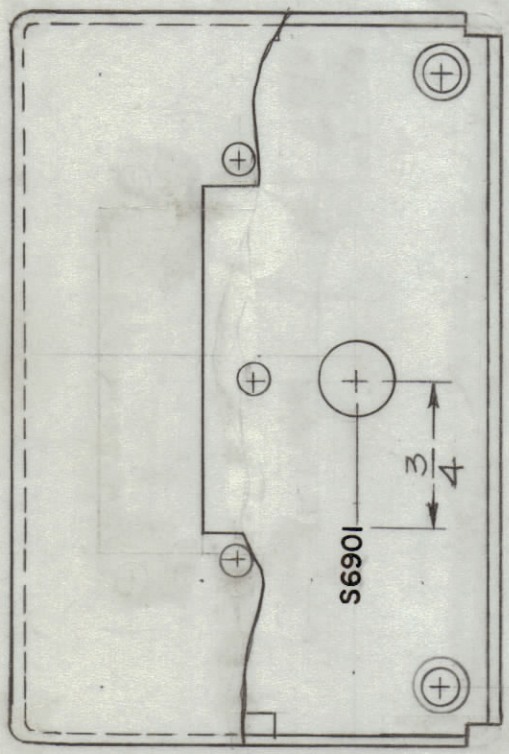
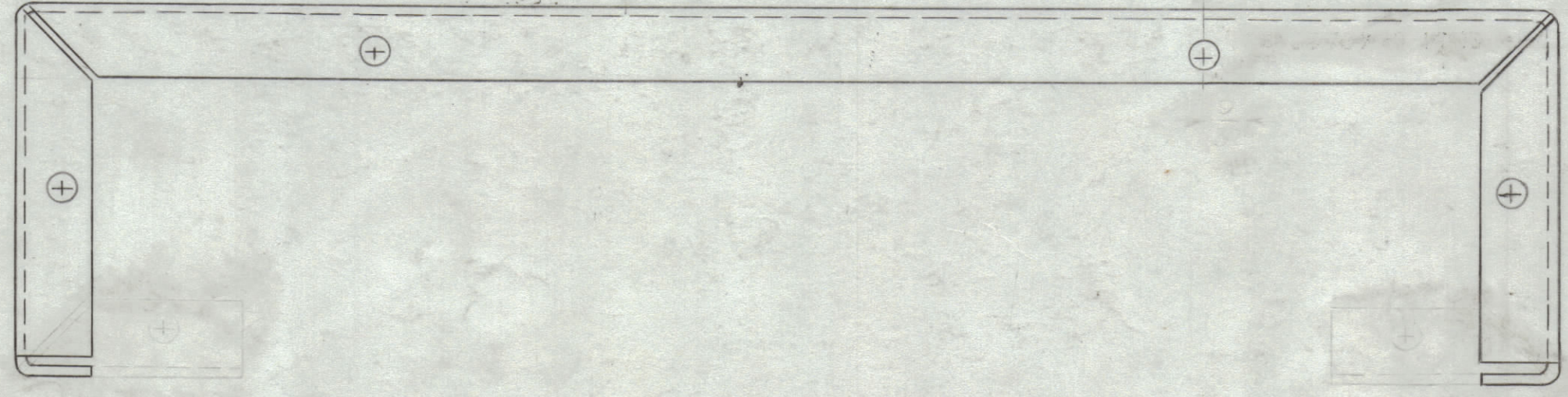
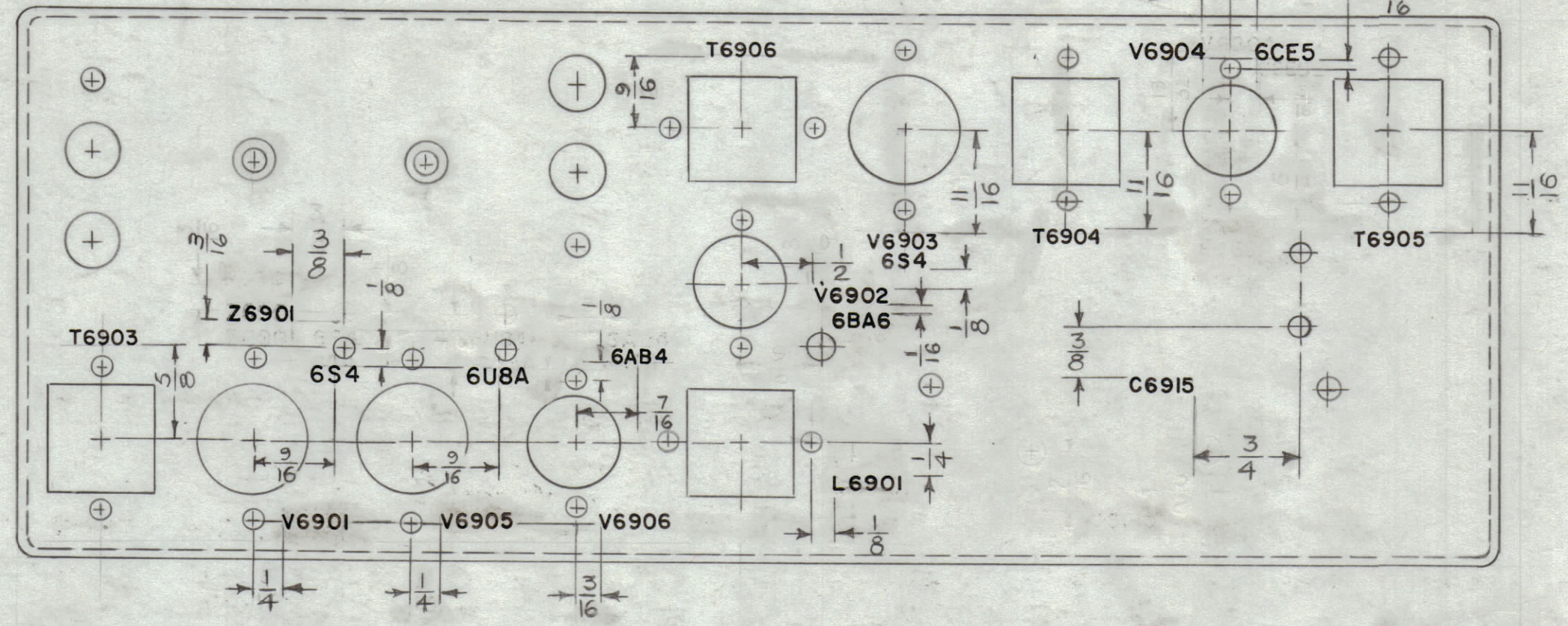
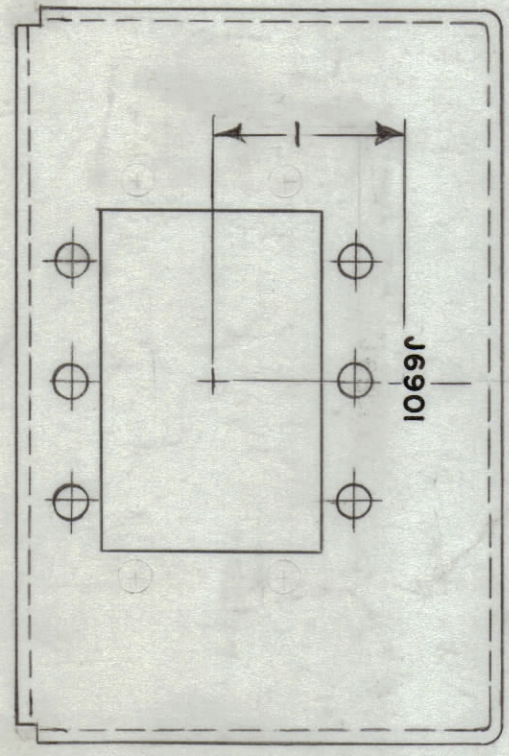


REVISIONS						
ZONE	SYM	DESCRIPTION	DATE	E.M.N. NO.	DRAFT	CHKD
		LETTERING REVISION				



~UNLESS OTHERWISE SPECIFIED~  
 MARKING PROCESS: AS PER TMC SPECIFICATION S-727.  
 LETTERING: 3/32 HIGH BLACK GOTHIC, LOCATED AS SHOWN.  
 STROKE: .020

NOTES

4	MNF-1	
Q'TY/UNIT	MODEL USED ON	ASS'Y. NO.
SCALE 1:1	CODE A	

THE CONTENTS OF THIS DRAWING ARE THE EXCLUSIVE PROPERTY OF THE TECHNICAL MATERIEL CORP. ITS UNAUTHORIZED USE OR REPRODUCTION IN WHOLE OR IN PART IS STRICTLY FORBIDDEN.

REQ'D.	ITEM	PART NUMBER	DESCRIPTION	SYMBOL
<b>LIST OF MATERIAL</b>				
MATERIAL				
//				
FINISH				
//				
<b>THE TECHNICAL MATERIEL CORP.</b> MAMARONECK, NEW YORK				
<b>MARKING MODULE CHASSIS</b> MARKING METHOD: AS PER TMC SPEC. S-727				
DRAWN	G.D.L.	DATE	10-16-63	FINAL APPROVAL
CHECKED	<i>atunai</i>	DATE	1-18-64	<i>KAL</i>
ELECT. DES.	<i>TKC</i>	DATE	12/26/63	
MECH. DES.	<i>W. Zeller</i>	DATE	1/18-64	
LD-1403				
SHEET				REV. LTR.

LD-1403

REF: MS-3570