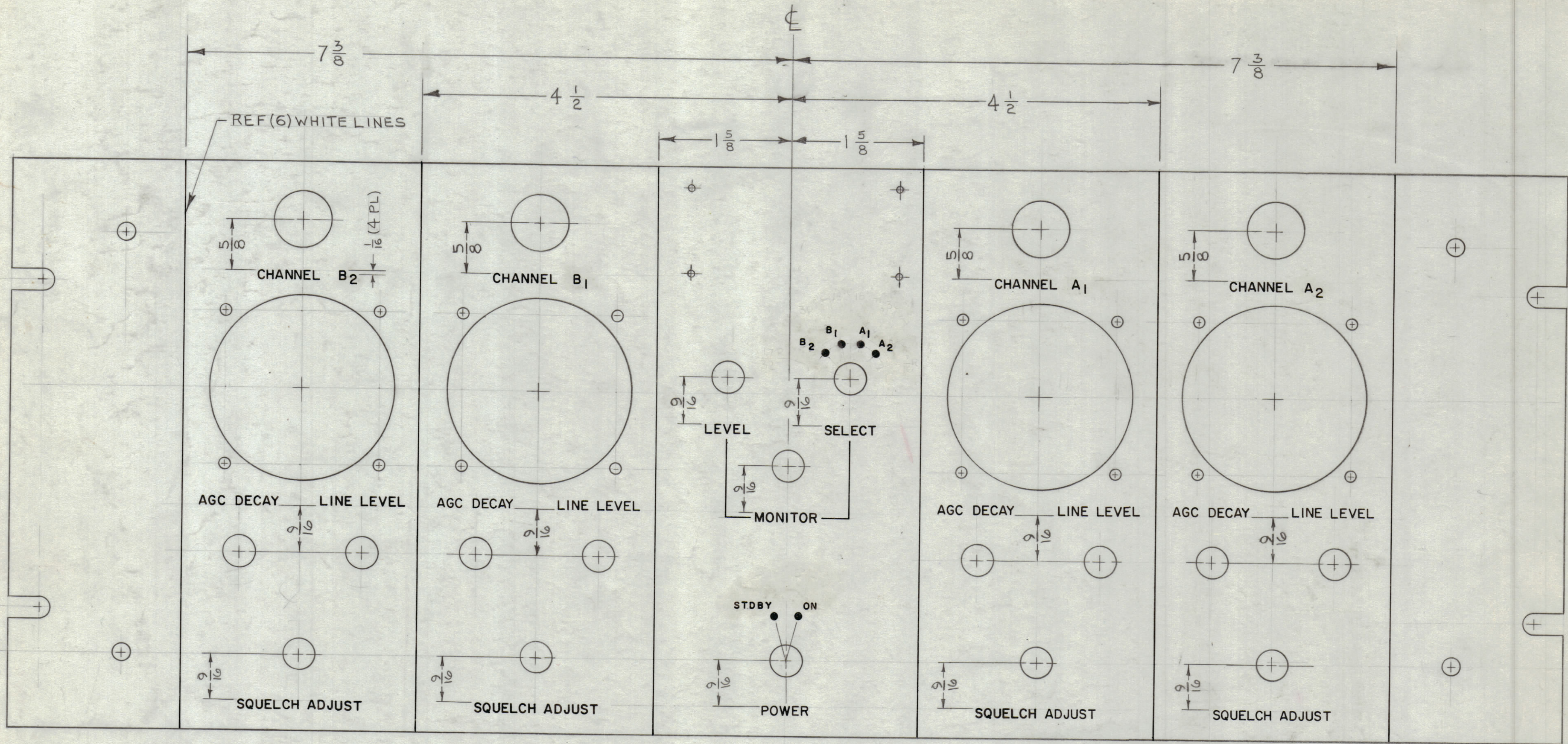


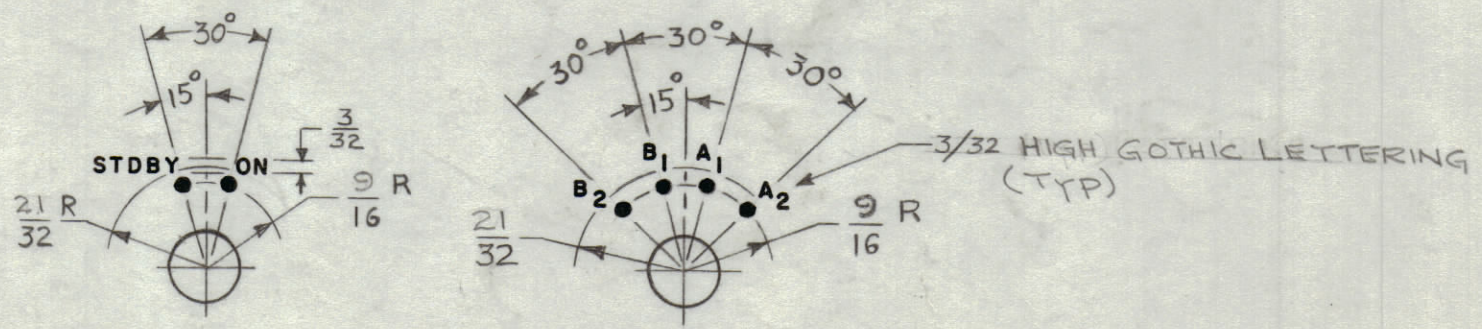
REVISIONS							
ZONE	SYM	DESCRIPTION	DATE	E.M.N. NO.	DRAFT	CHKD	APPD
		REVISED & REDRAW	11/1/63				
	X1	LETTERING HIGHTHS CHGD + RELOCATED	1-21-64	X1	N.P.		
	0	ORIGINAL RELEASE FOR PRODUCTION	4-13-64	0	AM.		



FRONT VIEW SHOWN

HEIGHT OF LETTERS	DEPTH OF STROKE	WIDTH OF STROKE
3/32	.010	.015
DOTS	.010	1/16 DIA.
LINES	.010	.015
1/8	.010	.020

- UNLESS OTHERWISE SPECIFIED:
1. ALL DOTS, LETTERINGS, & LINES TO BE WHITE FILLED.
  2. ALL LETTER GROUPS TO BE CENTERED ON HOLES.
  3. ALL LETTERING TO BE 1/8 HIGH GOTHIC



REF: MS-3562

REQ'D.	ITEM	PART NUMBER	DESCRIPTION	SYMBOL
	T. AALTONEN		LIST OF MATERIAL	
MATERIAL		THE TECHNICAL MATERIEL CORP. MAMARONECK, NEW YORK		
FINISH		TITLE MARKING, FRONT PANEL MARKING METHOD: ENGRAVING		
UNLESS OTHERWISE SPECIFIED DIMENSIONS ARE IN INCHES AND INCLUDE CHEMICALLY APPLIED OR PLATED FINISHES		DRAWN T. RAMIREZ	DATE 11/1/63	FINAL APPROVAL KJC
DECIMALS .X ± .05 .XX ± .01 .XXX ± .005		CHECKED @	DATE 3-11-64	DATE 3/11/64
FRACTIONS ± 1/64 ANGLES ± 0° 30'		ELECT. DES. JRG	DATE 3-11-64	DATE 3-11-64
TOLERANCES		MECH. DES. M. B. BROWN	DATE 3-11-64	DATE 3-11-64
SHEET 1 OF 2				LD-1401
				REV. LTR.

Q'TY./UNIT	MODEL USED ON	ASS'Y. NO.
1	MSA-1	A-3403
SCALE 1:1	CODE A	

NOTES

THE CONTENTS OF THIS DRAWING ARE THE EXCLUSIVE PROPERTY OF THE TECHNICAL MATERIEL CORP. ITS UNAUTHORIZED USE OR REPRODUCTION IN WHOLE OR IN PART IS STRICTLY FORBIDDEN.

LD-1401