

THE CONTENTS OF THIS DRAWING ARE THE EXCLUSIVE PROPERTY OF THE TECHNICAL MATERIEL CORP. ITS UNAUTHORIZED USE FOR REPRODUCTION IN WH LE OR IN PART IS STRICTLY FORBIDDEN.

REQ. PER UNIT

USED ON

MODEL

ASS'Y. NO.

DATE

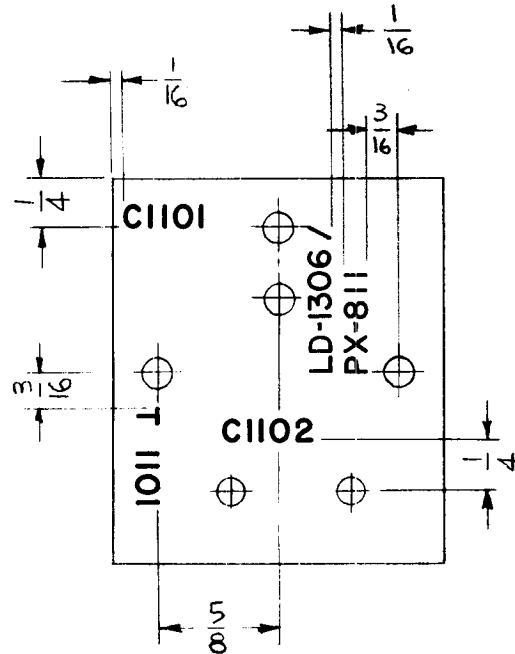
1

TTR-10

AX-409

5-8-63

LD-1306



UNLESS OTHERWISE SPECIFIED:
 1. ALL LETTERING TO BE 1/8 HIGH
 BLACK GOTHIC.
 MARKING METHOD: PER TMC SPEC. S727

REF: PX-811

SYM	DESCRIPTION	DATE	CH. NO.	DRAFTS	CHECKER	ENG. APP.	REQ. ITEM	PART NO.	KOHN	DESCRIPTION	E3037-60	SYMBOL	
							STOCK SIZE		THE TECHNICAL MATERIEL CORP. MAMARONECK, NEW YORK				
							MATERIAL		MARKING, BOARD, IPA				
							TYPE & TEMPER		MARKING PER SPEC S-727				
UNLESS OTHERWISE SPECIFIED DIMENSIONS ARE IN INCHES AND INCLUDE CHEMICALLY APPLIED OR PLATED FINISHES							HEAT TREAT. SPEC.		DRAWN		CHECKED		FINAL APPROVAL
DECIMALS .X ± .03 .XX ± .01 .XXX ± .005		FRACTIONS ± 1/64 ANGLES ± 0° 30'		TOLERANCES			CODE A		R. KOHN		W. Jordan 5/7/63		LD-1306
							FINISH & SPEC. NO.		ELEC. DES. APP.		MECH. DES. APP.		

THE CONTENTS OF THIS DRAWING ARE THE EXCLUSIVE PROPERTY OF THE TECHNICAL MATERIEL CORP. ITS UNAUTHORIZED USE FOR REPRODUCTION IN WHOLE OR IN PART IS STRICTLY FORBIDDEN.

REQ. PER UNIT

USED ON

MODEL

ASS'Y. NO.

DATE

1

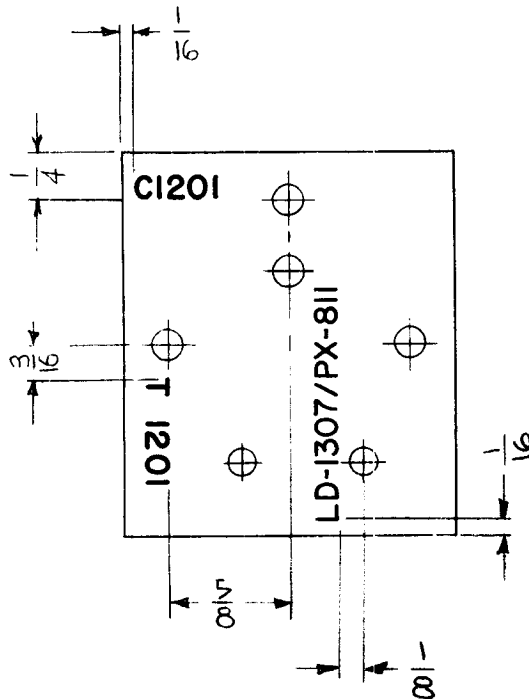
TTR-10

AX-410

5-8-63

LD-1307

A



UNLESS OTHERWISE SPECIFIED:
 1. ALL LETTERING TO BE 1/8 HIGH BLACK GOTHIC.
 MARKING PROCESS: PER TMC SPEC. 5727

REF-PX-811

						REQ. ITEM	PART NO.		KOHN	DESCRIPTION	E 3037-60	SYMBOL		
						STOCK SIZE			THE TECHNICAL MATERIEL CORP. MAMARONECK, NEW YORK					
									MARKING, BOARD, I FT					
A	CLERICAL CHANGE	8.24.64		ASB	Ⓢ	MATERIAL			MARKING PER SPEC S-127					
SYM	DESCRIPTION	DATE	CH. NO.	DRAFTS	CHECKER	ENG. APP.								
UNLESS OTHERWISE SPECIFIED DIMENSIONS ARE IN INCHES AND INCLUDE CHEMICALLY APPLIED OR PLATED FINISHES						SCALE								
						TYPE & TEMPER		HEAT TREAT. SPEC.	DRAWN	CHECKED	FINAL APPROVAL			
DECIMALS .X ± .05 .XX ± .01 .XXX ± .005						TOLERANCES						CODE		
									R.KOHN	W. J. Kohn 5/8/63	LD-1307		A	
						FINISH & SPEC. NO.			ELEC. DES. APP.	MECH. DES. APP.				

THE CONTENTS OF THIS DRAWING ARE THE EXCLUSIVE PROPERTY OF THE TECHNICAL MATERIEL CORP. ITS UNAUTHORIZED USE FOR REPRODUCTION IN WHOLE OR IN PART IS STRICTLY FORBIDDEN.

REQ. PER UNIT

1

USED ON

MODEL

TTR-10

ASS'Y. NO.

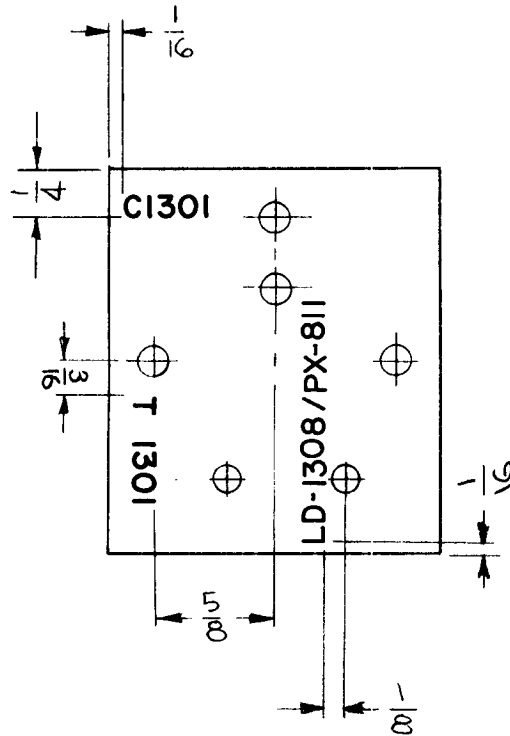
AX-411

DATE

5-8-63

LD-1308

A



UNLESS OTHERWISE SPECIFIED:
 1. ALL LETTERING TO BE 1/8 HIGH BLACK GOTHIC.
 MARKING PROCESS: PER TMC SPEC. 5727.

REF-PX-811

REQ.	ITEM	PART NO.	DESCRIPTION	SYMBOL
			KOHN	E 3037-60
STOCK SIZE			THE TECHNICAL MATERIEL CORP. MAMARONECK, NEW YORK	
MATERIAL			MARKING, BOARD, IFT	
TYPE & TEMPER			MARKING PER SPEC 5-727	
HEAT TREAT. SPEC.			DRAWN	
FINISH & SPEC. NO.			CHECKED	
			FINAL APPROVAL	
			R. KOHN	
			W. Jordan 5/8/63	
			LD-1308	
			A	

THE CONTENTS OF THIS DRAWING ARE THE EXCLUSIVE PROPERTY OF THE TECHNICAL MATERIEL CORP. ITS UNAUTHORIZED USE FOR REPRODUCTION IN WHOLE OR IN PART IS STRICTLY FORBIDDEN.

REQ. PER UNIT

USED ON

MODEL

ASS'Y. NO.

DATE

1

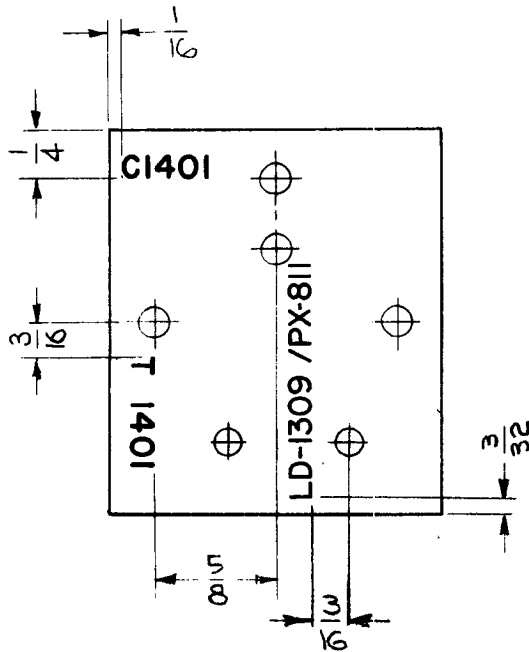
TTR-10

AX-412

5-8-63

LD-1309

A



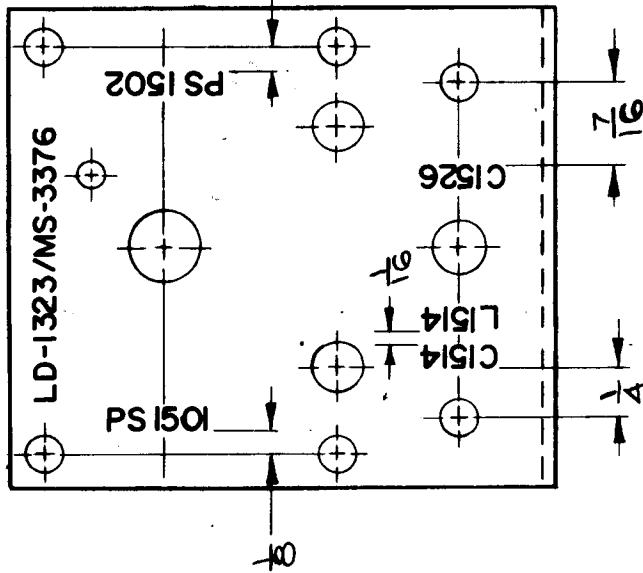
UNLESS OTHERWISE SPECIFIED:
 1. ALL LETTERING TO BE 1/8 HIGH
 BLACK GOTHIC
 MARKING PROCESS: PER TMC SPEC. 5727.

REF-PX-811

REQ.	ITEM	PART NO.		KOHN		DESCRIPTION E 3037-60		SYMBOL
		STOCK SIZE		THE TECHNICAL MATERIEL CORP. MAMARONECK. NEW YORK				
A	CLERICAL CHANGE	8.24.64	MB	Ⓜ	MARKING BOARD, IFT			
SYM	DESCRIPTION	DATE	CH. NO.	DRAFTS	CHECKER	ENG. APP.	MARKING PER SPEC 5-727	
UNLESS OTHERWISE SPECIFIED DIMENSIONS ARE IN INCHES AND INCLUDE CHEMICALLY APPLIED OR PLATED FINISHES		SCALE		H		DRAWN: <i>[Signature]</i> CHECKED: <i>[Signature]</i> 5/8/63 FINAL APPROVAL: <i>[Signature]</i>		
DECIMALS	TOLERANCES	FRACTIONS	CODE	TYPE & TEMPER		HEAT TREAT. SPEC.	FINISH & SPEC. NO.	
X ± .05		± 1/64	A				RKOHN <i>[Signature]</i> 5/8/63	
XX ± .01		ANGLES					ELEC. DES. APP. MECH. DES. APP.	
XXX ± .005		± 0° 30'					LD-1309 A	

THE CONTENTS OF THIS DRAWING ARE THE EXCLUSIVE PROPERTY OF THE TECHNICAL MATERIEL CORP. ITS UNAUTHORIZED USE FOR REPRODUCTION IN WHOLE OR IN PART IS STRICTLY FORBIDDEN.

REQ. PER UNIT	1	MODEL	TTR-10	USED ON	LD-1323
ASSY. NO.	A-3279	DATE	5-28-63		



UNLESS OTHERWISE SPECIFIED:
 1. ALL LETTERING TO BE 1/8 HIGH BLACK GOTHIC, PER TMC SPEC. S727
 2. LETTERING TO BE CENTERED ON HOLES.

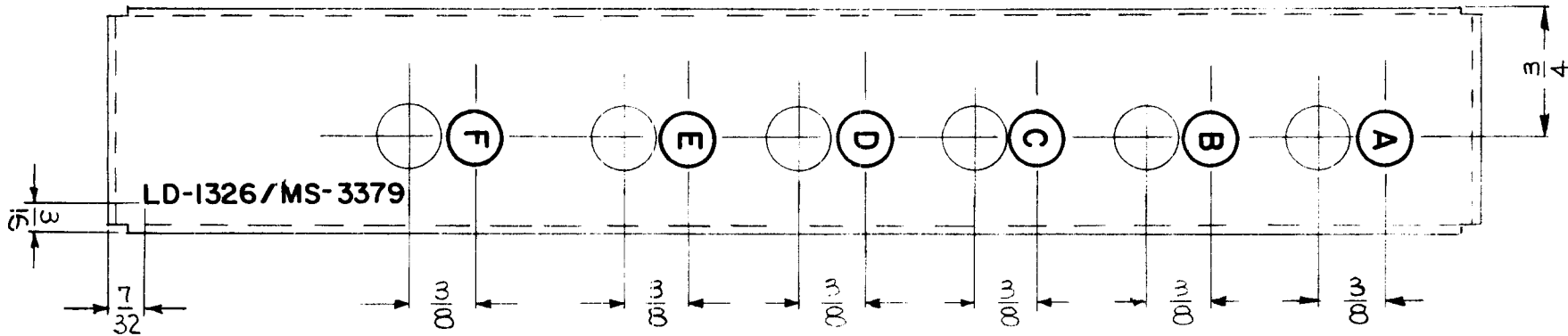
REF: MS 3376

SYM	DESCRIPTION	DATE	CH. NO.	DRAFTS	CHECKER	ENG. APP.	SCALE	CODE
	UNLESS OTHERWISE SPECIFIED DIMENSIONS ARE IN INCHES AND INCLUDE CHEMICALLY APPLIED OR PLATED FINISHES						~ FULL	A
	TOLERANCES							FRACTIONS ± 1/64 ANGLES ± 0° 30' DECIMALS .X ± .05 .XX ± .01 .XXX ± .005
NRG. ITEM	PART NO.	TYPE & TEMPER HEAT TREAT. SPEC.						
	~							
	STOCK SIZE							
	~							
	MATERIAL							
	~							
	DRAWN	5/25/63	CHECKED					
	W. JOHNSON	6/27/63	W. JOHNSON					
	ELC. DES. APP.		MECH. DES. APP.					
	~							
	FINISH & SPEC. NO.							
	~							
	DESCRIPTION	THE TECHNICAL MATERIEL CORP. MAMARONECK. NEW YORK						
	MARKING, PA SWITCH BRACKET	MARKING PROCESS: PERTMC SPEC S727						
	SYMBOL	LD-1323						

THE CONTENTS OF THIS DRAWING ARE THE EXCLUSIVE PROPERTY OF THE TECHNICAL MATERIEL CORP. ITS UNAUTHORIZED USE FOR REPRODUCTION IN WHOLE OR IN PART IS STRICTLY FORBIDDEN.

REQ. PER UNIT	USED ON		
	MODEL	ASS'Y. NO.	DATE
1	TTRT		5-31-63
1	TTRR		5-31-63

LD-1326



~ UNLESS OTHERWISE SPECIFIED ~

1. ALL LETTERING TO BE 1/8 HIGH BLACK GOTHIC.
MARKING PROCESS: AS PER TMC SPEC. 5727.
2. CIRCLES TO BE 5/16 DIA. (HEALING)

REF: MS-3379

REQ.	ITEM	PART NO.	DESCRIPTION	SYMBOL			
			KOWN				
			THE TECHNICAL MATERIEL CORP. MAMARONECK. NEW YORK				
			STOCK SIZE				
			MARKING, CHASSIS, WRAPAROUND				
			MARKING, PER SPEC. 5-727				
SYM	DESCRIPTION	DATE	CH. NO.	DRAFTS	CHECKER	ENG. APP.	MATERIAL
	UNLESS OTHERWISE SPECIFIED DIMENSIONS ARE IN INCHES AND INCLUDE CHEMICALLY APPLIED OR PLATED FINISHES	SCALE 1:1					
DECIMALS .X ± .05 .XX ± .01 .XXX ± .005	TOLERANCES	FRACTIONS ± 1/64 ANGLES ± 0° 30'	CODE A				
							TYPE & TEMPER HEAT TREAT. SPEC.
							DRAWN WA PALMER
							CHECKED J. De...
							FINAL APPROVAL BP
							FINISH & SPEC. NO.
							ELEC. DES. APP.
							MECH. DES. APP.
							LD-1326

THE CONTENTS OF THIS DRAWING ARE THE EXCLUSIVE PROPERTY OF THE TECHNICAL MATERIEL CORP. ITS UNAUTHORIZED USE FOR REPRODUCTION IN WHOLE OR IN PART IS STRICTLY FORBIDDEN.

REQ. PER UNIT

1 TTRR-1,2,3,4

USED ON

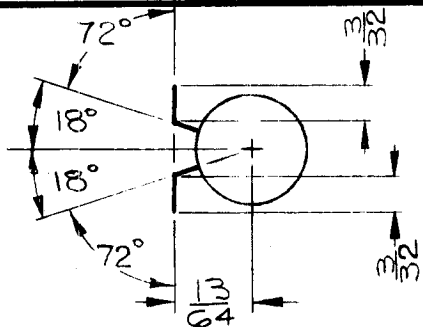
MODEL

ASS'Y. NO.

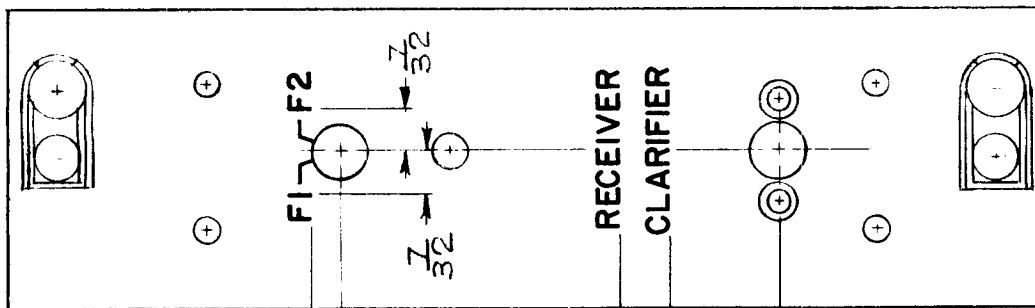
DATE

6-11-63

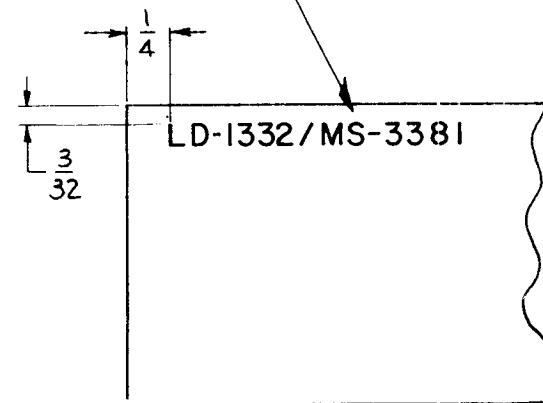
LD-1332



MARKING PROCESS: AS PER TMC SPEC. S-727 ON REAR OF PANEL.



FRONT OF PANEL SHOWN



REAR OF PANEL

NOTES 8

MARKING METHOD 8 ENGRAVING ALL LETTERING 1/8 HIGH GOTHIC.

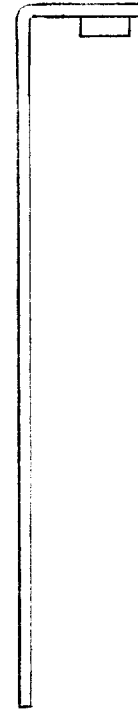
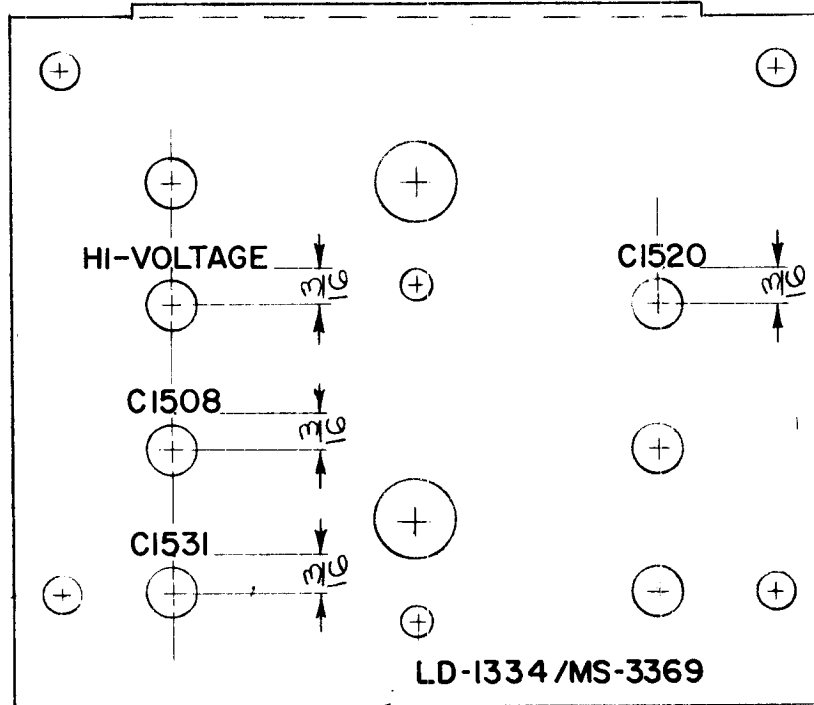
ALL LINES & LETTERING TO BE WHITE FILLED. LETTERING TO BE CENTERED ON HOLES. LINE WIDTH-.015, LINE DEPTH-.010

REF: MS-3381

SYM	DESCRIPTION	DATE	CH. NO.	DRAFTS	CHECKER	ENG. APP.	REQ. ITEM	PART NO.	DESCRIPTION	SYMBOL	
									THE TECHNICAL MATERIEL CORP. MAMARONECK. NEW YORK		
								STOCK SIZE	MARKING, FRONT PANEL		
								MATERIAL	RECEIVER MODULE		
	UNLESS OTHERWISE SPECIFIED DIMENSIONS ARE IN INCHES AND INCLUDE CHEMICALLY APPLIED OR PLATED FINISHES	SCALE	1:1						<i>R. Kohn</i> 6-11-63 <i>J. H.</i> 6/17/63 <i>BP</i>		
							TYPE & TEMPER	HEAT TREAT. SPEC.	DRAWN	CHECKED	FINAL APPROVAL
									Ron KOHN 17 JULY '63		LD-1332
							FINISH & SPEC. NO.		ELEC. DES. APP.	MECH. DES. APP.	

THE CONTENTS OF THIS DRAWING ARE THE EXCLUSIVE PROPERTY OF THE TECHNICAL MATERIEL CORP. ITS UNAUTHORIZED USE FOR REPRODUCTION IN WHOLE OR IN PART IS STRICTLY FORBIDDEN.

REQ. PER UNIT 1	USED ON			LD-1334
	MODEL TTR-10	ASS'Y. NO. A-2773	DATE 6-11-63	



UNLESS OTHERWISE SPECIFIED:

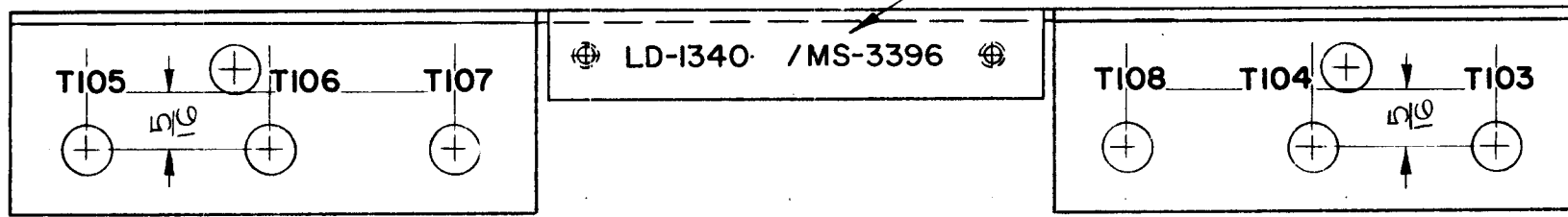
1. ALL LETTERING TO BE 1/8 HIGH BLACK GOTHIC.
2. LETTERING TO BE CENTERED ON HOLES AS SHOWN.

REF: MS-3369

SYM	DESCRIPTION	DATE	CH. NO.	DRAFTS	CHECKER	ENG. APP.	REQ. ITEM	PART NO.	DESCRIPTION	SYMBOL	
									THE TECHNICAL MATERIEL CORP. MAMARONECK. NEW YORK MARKING, SWITCH MTG, PLATE MARKING PROCESS: PERTMC SPEC 5727		
								STOCK SIZE			
								MATERIAL			
	UNLESS OTHERWISE SPECIFIED DIMENSIONS ARE IN INCHES AND INCLUDE CHEMICALLY APPLIED OR PLATED FINISHES	SCALE 1:1							<i>R. Clement</i> 6-11-63 <i>W. Jordan</i> 6/17/63		
	DECIMALS .X ± .05 .XX ± .01 .XXX ± .005	FRACTIONS ± 1/64 ANGLES ± 0° 30'	CODE A				TYPE & TEMPER	HEAT TREAT. SPEC.	DRAWN RON KOHN	CHECKED W. JORDAN	FINAL APPROVAL LD-1334
	TOLERANCES						FINISH & SPEC. NO.		ELEC. DES. APP.	MECH. DES. APP.	

THE CONTENTS OF THIS DRAWING ARE THE EXCLUSIVE PROPERTY OF THE TECHNICAL MATERIEL CORP. ITS UNAUTHORIZED USE FOR REPRODUCTION IN WHOLE OR IN PART IS STRICTLY FORBIDDEN.

REQ. PER UNIT 1	USED ON		LD-1340
	MODEL GPR-92	ASS'Y. NO.	



TMC PART No.

~NOTE~

UNLESS OTHERWISE SPECIFIED:

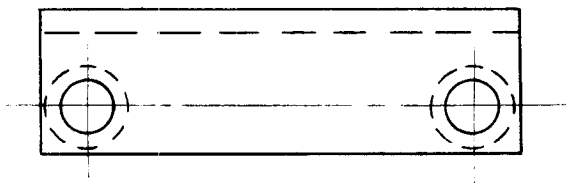
1. ALL LETTERING TO BE CENTERED ON HOLES AS SHOWN.
2. ALL LETTERING TO BE 1/8 HIGH BLACK GOTHIC.
3. MARKING PROCESS AS PER TMC SPEC. S-727.

REF: MS-3396

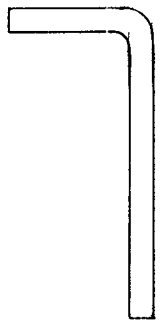
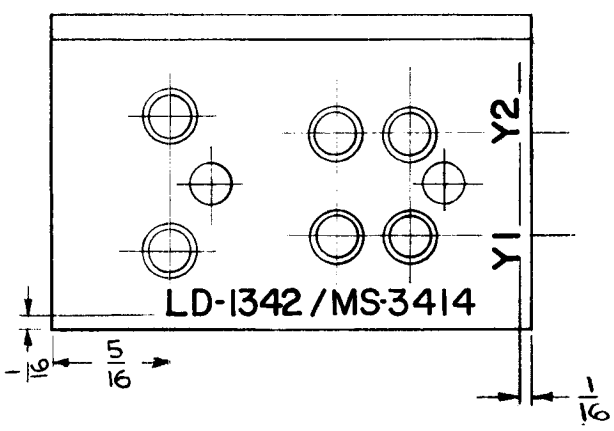
							REQ. ITEM	PART NO.	STRUMER DESCRIPTION		SYMBOL	
							STOCK SIZE		THE TECHNICAL MATERIEL CORP. MAMARONECK, NEW YORK			
							MATERIAL		LETTERING COIL BRACKET			
SYM	DESCRIPTION	DATE	CH. NO.	DRAFTS	CHECKER	ENG. APP.	MATERIAL		<i>R. Clonick</i> 6-17-63 <i>J. De</i> 7/8/63 <i>TFH</i> 7.8.63			
UNLESS OTHERWISE SPECIFIED DIMENSIONS ARE IN INCHES AND INCLUDE CHEMICALLY APPLIED OR PLATED FINISHES		SCALE 1:1					TYPE & TEMPER	HEAT TREAT. SPEC.	DRAWN	CHECKED	FINAL APPROVAL	
DECIMALS .X ± .05 .XX ± .01 .XXX ± .005	TOLERANCES	FRACTIONS ± 1/64 ANGLES ± 0° 30'	CODE				FINISH & SPEC. NO.		ELEC. DES. APP.	MECH. DES. APP.	LD-1340	

REQ. PER UNIT	USED ON		
	MODEL	ASS'Y. NO.	DATE
1	TTRR		7-10-63
1	TTRT		7-10-63

LD-1342



~ UNLESS OTHERWISE SPECIFIED ~
 1. ALL LETTERING TO BE 3/32 HIGH
 BLACK GOTHIC. LOCATE APPROX.
 AS SHOWN.



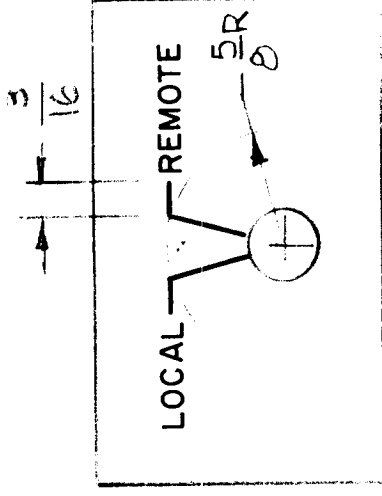
REF: MS-3414

REQ. ITEM	PART NO.	JORDAN DESCRIPTION E 3037-221		SYMBOL							
		THE TECHNICAL MATERIEL CORP. MAMARONECK. NEW YORK									
		MARKING, BRACKET, CRYSTAL, SOCKET									
		MARKING PROCESS: PER TMC SPEC. 5727									
SYM	DESCRIPTION	DATE	CH. NO.	DRAFTS	CHECKER	ENG. APP.	MATERIAL				
	UNLESS OTHERWISE SPECIFIED DIMENSIONS ARE IN INCHES AND INCLUDE CHEMICALLY APPLIED OR PLATED FINISHES	SCALE	2:1								
	DECIMALS .X ± .05 .XX ± .01 .XXX ± .005	FRACTIONS ± 1/64 ANGLES ± 0° 30'	CODE	A							
	TOLERANCES										
							TYPE & TEMPER	HEAT TREAT. SPEC.	DRAWN	CHECKED	FINAL APPROVAL
									RON KOHN 17 JULY 1963		
							FINISH & SPEC. NO.	ELEC. DES. APP.	MECH. DES. APP.	LD-1342	

APPLICATION

REVISIONS

QTY	MODEL USED ON	ASS'Y NO	LTR	DESCRIPTION	DATE	E.M.N.NO	DRAFT	CHKD	APPD
1	GPT1KCF40								



MARKING PROCESS: AS PER TMC SPECIFICATION S727

LETTERING: 1/8 HIGH BLACK GOTHIC, LOCATED AS SHOWN

DO NOT USE

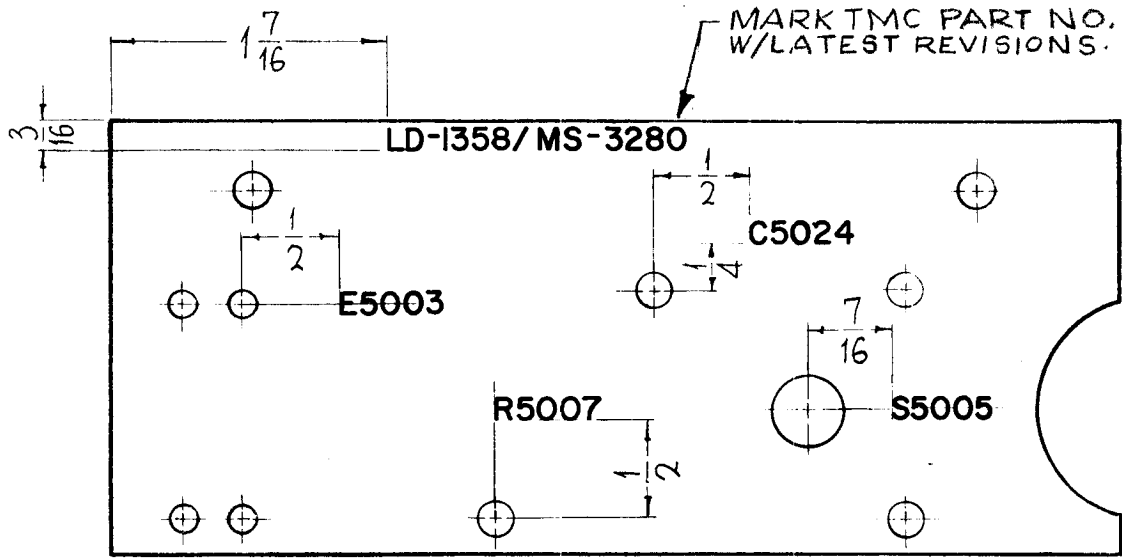
REF: MS 6736

UNLESS OTHERWISE SPECIFIED DIMENSIONS ARE IN INCHES AND INCLUDE CHEMICALLY APPLIED OR PLATED FINISHES	REQ'D ITEM	PART NUMBER	DESCRIPTION	SYM.
DECIMALS .X ± .05 .XX ± .01 .XXX ± .005	LIST OF MATERIAL			
FRACTIONS 1/64 ANGLES 0°-30°	THE TECHNICAL MATERIEL CORP. MAMARONECK, NEW YORK			
MATERIAL	MARKING PLATE ADPTER			
FINISH				
FINAL APPROVAL	DATE			
MECH. DES.	DATE			
ELECT. DES.	DATE			
CHECKED	DATE			
DRAWN G.D.L.	DATE 9.27.74			

NOTICE TO PERSONS RECEIVING THIS DRAWING THE TECHNICAL MATERIEL CORPORATION claims proprietary right in the material disclosed hereon. This drawing is issued in confidence for engineering information only and may not be reproduced or used to manufacture anything shown hereon without permission from THE TECHNICAL MATERIEL CORPORATION to the user. This drawing is loaned for mutual assistance and is subject to recall at any time.		SIZE A	CODE IDENT. NO. 82679	DWG NO. LD/354	ISSUE X
SCALE 1:1	SHEET	OF			

THE CONTENTS OF THIS DRAWING ARE THE EXCLUSIVE PROPERTY OF THE TECHNICAL MATERIEL CORP. ITS UNAUTHORIZED USE FOR REPRODUCTION IN WHOLE OR IN PART IS STRICTLY FORBIDDEN.

REQ. PER UNIT	USED ON			LD-1358	○
	MODEL	ASS'Y. NO.	DATE		
1	GPT-200K-AX-393	A-2756-1	5-20-63		



MARKING PROCESS: AS PER TMC SPECIFICATION S-727.
 LETTERING: 1/8 HIGH GOTHIC, BLACK, LOCATED AS SHOWN.

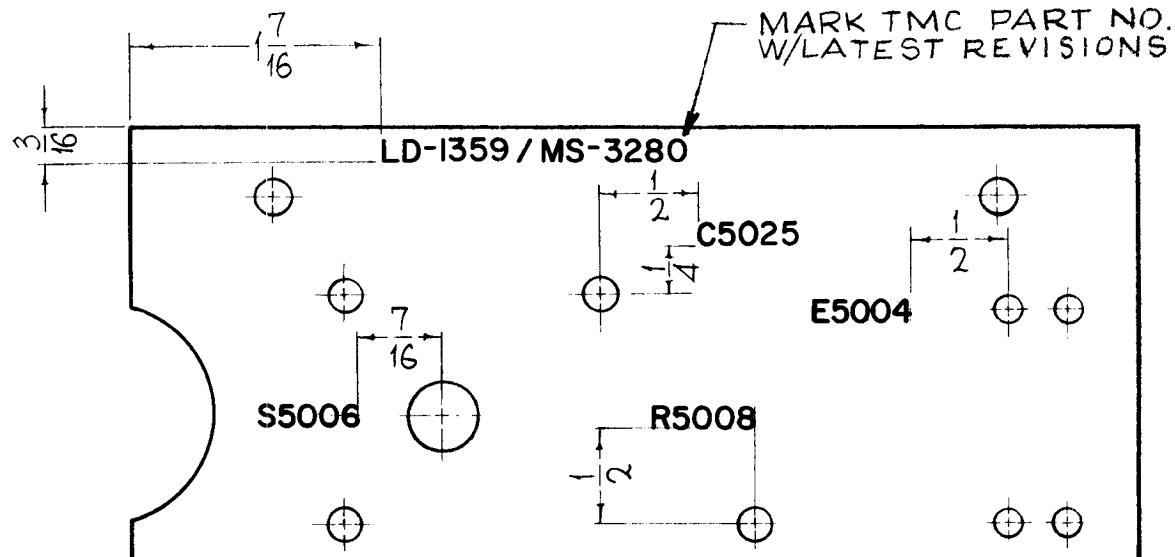
REF: MS 3280

							REQ. ITEM	PART NO.	DESCRIPTION	SYMBOL			
○	ORIGINAL RELEASE FOR PRODUCTION	5-13-64	○	AM	<i>[Signature]</i>				THE TECHNICAL MATERIEL CORP. MAMARONECK, NEW YORK LETTERING, PLATE, THERMOSTAT MTG.				
X4	C5024 WAS C5004	10-14-63					STOCK SIZE						
X3	C5004 ADDED	10-9-63											
SYM	DESCRIPTION	DATE	CH. NO.	DRAFTS	CHECKER	ENG. APP.	MATERIAL						
UNLESS OTHERWISE SPECIFIED DIMENSIONS ARE IN INCHES AND INCLUDE CHEMICALLY APPLIED OR PLATED FINISHES		SCALE							John C Biele	<i>aa</i>	<i>Rx</i>		
DECIMALS .X ± .05 .XX ± .01 .XXX ± .005		FRACTIONS ± 1/64 ANGLES ± 0° 30'		TOLERANCES		CODE A		TYPE & TEMPER	HEAT TREAT. SPEC.	DRAWN	CHECKED	FINAL APPROVAL	
										<i>[Signature]</i>	<i>[Signature]</i>	LD-1358	○
								FINISH & SPEC. NO.	ELEC. DES. APP.	MECH. DES. APP.			

THE CONTENTS OF THIS DRAWING ARE THE EXCLUSIVE PROPERTY OF THE TECHNICAL MATERIEL CORP. ITS UNAUTHORIZED USE FOR REPRODUCTION IN WHOLE OR IN PART IS STRICTLY FORBIDDEN.

REQ. PER UNIT	USED ON		
	MODEL	ASS'Y. NO.	DATE
1	GPT200K-AX-393	A-2756-2	5-20-63

LD-1359 | ○

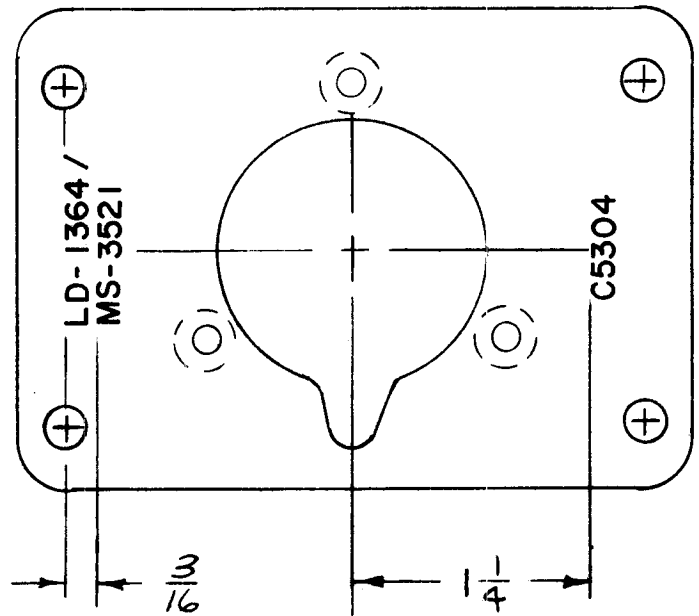


MARKING PROCESS: AS PER TMC SPECIFICATION S-727.
 LETTERING: 1/8 HIGH GOTHIC, BLACK, LOCATED AS SHOWN.

REF: MS 3280

REQ.	ITEM	PART NO.	DESCRIPTION				SYMBOL
0	ORIGINAL RELEASE FOR PRODUCTION	5-13-64	0	A.M.	<i>RC</i>	THE TECHNICAL MATERIEL CORP. MAMARONECK, NEW YORK	
X4	C5025 WAS C5005	10-14-63				STOCK SIZE	
X3	C5005 ADDED	10-9-63				LETTERING, PLATE THERMOSTAT MTG.	
SYM	DESCRIPTION	DATE	CH. NO.	DRAFTS	CHECKER	ENG. APP.	MATERIAL
UNLESS OTHERWISE SPECIFIED DIMENSIONS ARE IN INCHES AND INCLUDE CHEMICALLY APPLIED OR PLATED FINISHES		SCALE					John C. Biele <i>JB</i> <i>RC</i>
DECIMALS X ± .05 .XX ± .01 .XXX ± .005		TOLERANCES	FRACTIONS ± 1/64 ANGLES ± 0° 30'	CODE A			TYPE & TEMPER HEAT TREAT. SPEC. DRAWN CHECKED FINAL APPROVAL
							FINISH & SPEC. NO. <i>JB</i> <i>RC</i> <i>LD-1359</i> ○

REQ. PER UNIT	USED ON			LD-1364 0
	MODEL	ASS'Y. NO.	DATE	
1	GPT 200K	AX-395	10-2-63	



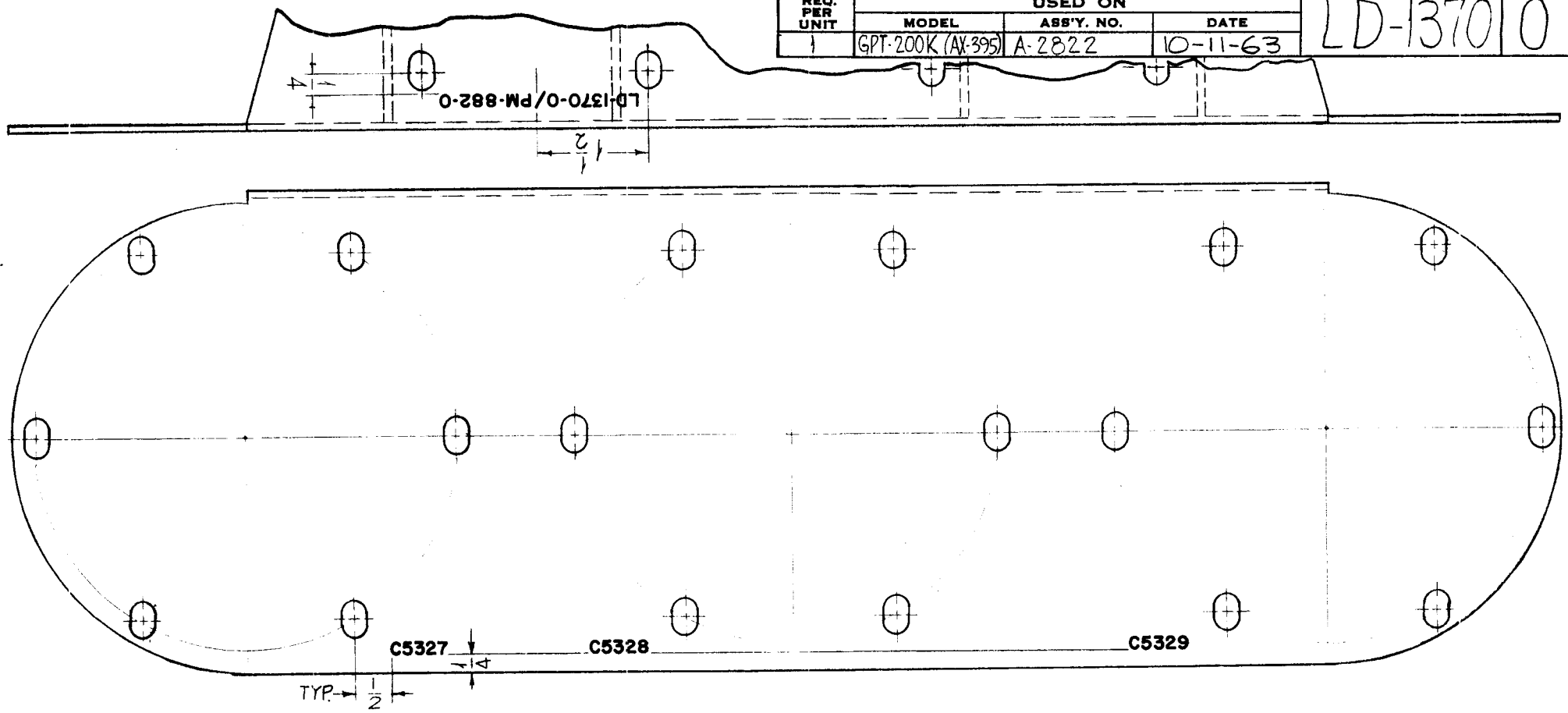
MARKING PROCESS: AS PER TMC SPECIFICATION S-727.

LETTERING: 1/8 HIGH BLACK GOTHIC, LOCATED AS SHOWN.

							REQ. ITEM	PART NO.	F. BUDETTI DESCRIPTION			SYMBOL			
							STOCK SIZE		THE TECHNICAL MATERIEL CORP. MAMARONECK. NEW YORK						
									LETTERING, PLATE, METERING CIRCUIT MTG						
0	ORIGINAL RELEASE	5.16.64		WB			MATERIAL								
SYM	DESCRIPTION	DATE	CH. NO.	DRAFTS	CHECKER	ENG. APP.			A TURSI	aa	RAL				
UNLESS OTHERWISE SPECIFIED DIMENSIONS ARE IN INCHES AND INCLUDE CHEMICALLY APPLIED OR PLATED FINISHES						SCALE			TYPE & TEMPER			HEAT TREAT. SPEC.	DRAWN	CHECKED	FINAL APPROVAL
DECIMALS	TOLERANCES		FRACTIONS	CODE					ELEC. DES. APP.		MECH. DES. APP.	LD-1364 0			
.X ± .05			± 1/64												
.XX ± .01			ANGLES												
.XXX ± .005			± 0° 30'												
							FINISH & SPEC. NO.								

REQ. PER UNIT	USED ON		
	MODEL	ASS'Y. NO.	DATE
1	GPT-200K (AY-395)	A-2822	10-11-63

LD-1370 0

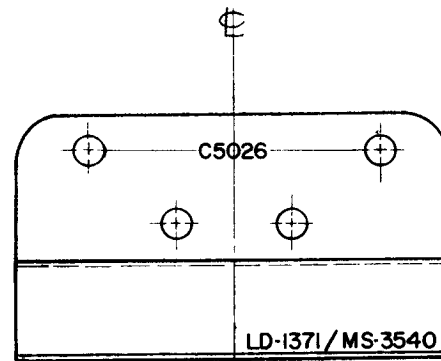
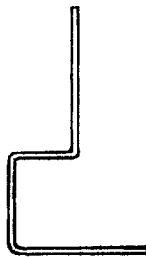


MARKING PROCESS: AS PER TMC SPECIFICATION S-727.

LETTERING: 1/8 HIGH BLACK GOTHIC, LOCATED AS SHOWN.

REQ. ITEM	PART NO.	F. BUDETTI	DESCRIPTION	SYMBOL								
			THE TECHNICAL MATERIEL CORP. MAMARONECK, NEW YORK									
			MARKING, DEFLECTOR, AIR									
			MARKING METHOD: AS PER TMC SPEC S727									
SYMBOL	DESCRIPTION	DATE	CH. NO.	DRAFTS	CHECKER	ENG. APP.	MATERIAL	TYPE & TEMPER	HEAT TREAT. SPEC.	DRAWN	CHECKED	FINAL APPROVAL
○	ORIGINAL RELEASE FOR PRODUCTION	3-3-64								SRG	aa gca	RPL 3/20/64
	UNLESS OTHERWISE SPECIFIED DIMENSIONS ARE IN INCHES AND INCLUDE CHEMICALLY APPLIED OR PLATED FINISHES	SCALE	1/2" = 1"									
DECIMALS	TOLERANCES	FRACTIONS	CODE									
.X ± .05 .XX ± .01 .XXX ± .005		± 1/64 ANGLES ± 0° 30'	A									
FINISH & SPEC. NO.		ELEC. DES. APP.	MECH. DES. APP.	LD-1370 0								

REQ. PER UNIT	USED ON			LD-1371 O
	MODEL	ASSY. NO.	DATE	
2	GPT-200K	AX-393	12-27-63	



MARK TMC PART NO. W/LATEST REVISIONS

MARKING PROCESS: AS PER TMC SPECIFICATION S-727.

LETTERING: 1/8 HIGH BLACK GOTHIC, LOCATED AS SHOWN.

REF: MS 3540

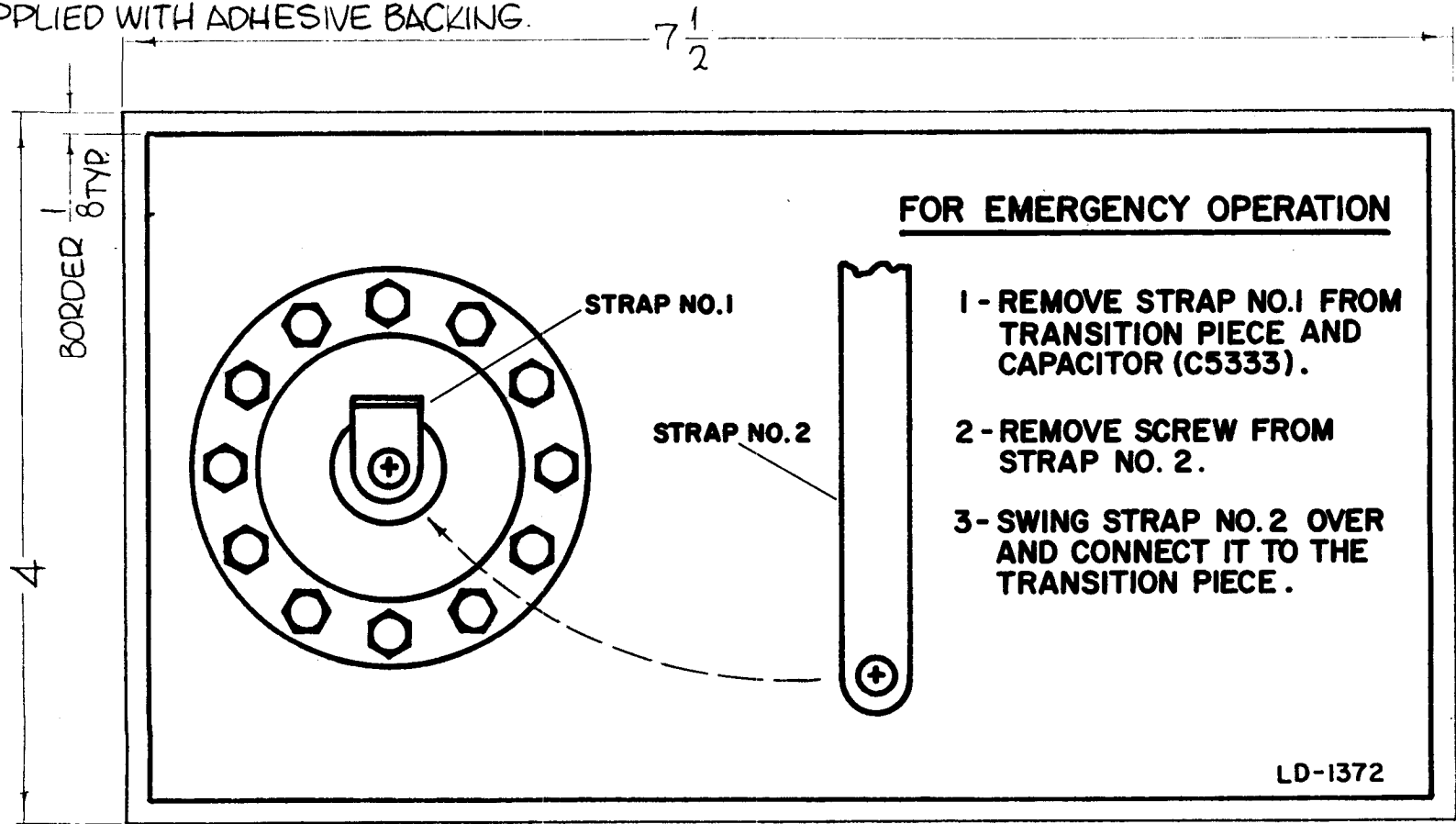
							REQ. ITEM	PART NO.	F. BUDETTI	DESCRIPTION	SYMBOL		
									THE TECHNICAL MATERIEL CORP. MAMARONECK. NEW YORK				
O	ORIGINAL RELEASE FOR PRODUCTION	5-13-64	O	A.M.	<i>AK</i>			STOCK SIZE	MARKING CAPACITOR MTG. 3R/KT				
X1	REVISED & REDRAWN	12-27-63							MARKING METHOD: AS PER TMC SPEC. S-727				
SYM	DESCRIPTION	DATE	CH. NO.	DRAFTS	CHECKER	ENG. APP.		MATERIAL	John C. Biele	<i>aa</i>	<i>RJL</i>		
UNLESS OTHERWISE SPECIFIED DIMENSIONS ARE IN INCHES AND INCLUDE CHEMICALLY APPLIED OR PLATED FINISHES						SCALE			TYPE & TEMPER	HEAT TREAT. SPEC.	DRAWN	CHECKED	FINAL APPROVAL
DECIMALS .X ± .05 .XX ± .01 .XXX ± .005	TOLERANCES	FRACTIONS ± 1/64 ANGLES ± 0° 30'	CODE A								<i>aa</i>	<i>aa</i>	LD-1371 O
								FINISH & SPEC. NO.	ELEC. DES. APP.	MECH. DES. APP.			

NOTES

ALL LETTERING AND LINEWORK TO BE BLACK ON A WHITE BACKGROUND, PRINTED DIRECTLY ON FACE OF PLASTIC.

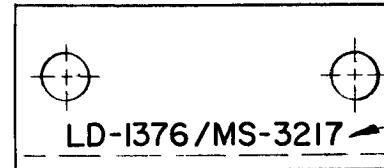
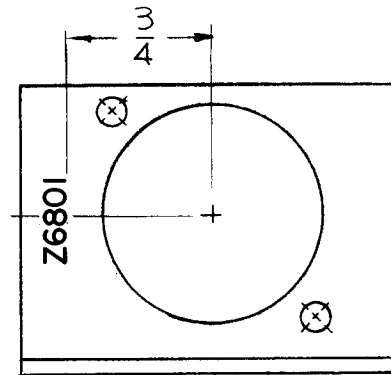
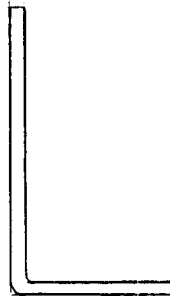
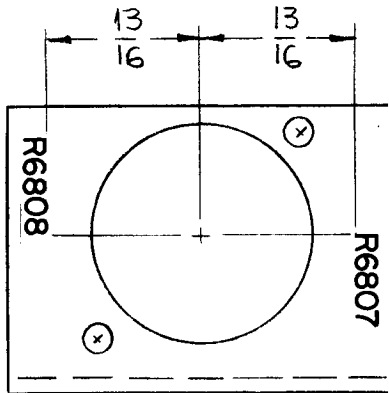
TO BE SUPPLIED WITH ADHESIVE BACKING.

REQ. PER UNIT	USED ON			LD-1372 0
	MODEL	ASS'Y. NO.	DATE	
1	GPT-200K	AX-395	12-19-63	



REQ.	ITEM	PART NO.	F. BUDETTI DESCRIPTION			SYMBOL
		.015 THICK	THE TECHNICAL MATERIEL CORP.			
		STOCK SIZE	MAMARONECK. NEW YORK			
0	ORIGINAL RELEASE	5.16.64	DIAGRAM, EMERGENCY OPERATION			
SYM	DESCRIPTION	DATE	CH. NO.	DRAFTS	CHECKER	ENG. APP.
UNLESS OTHERWISE SPECIFIED DIMENSIONS ARE IN INCHES AND INCLUDE CHEMICALLY APPLIED OR PLATED FINISHES		SCALE				
DECIMALS: .X ± .05 .XX ± .01 .XXX ± .005	TOLERANCES	FRACTIONS ± 1/64 ANGLES ± 0° 30'	CODE			
					John C. Biele	AA
					DRWN	CHECKED
					FINAL APPROVAL	
		POLISHED FRONT AND REAR				
		FINISH & SPEC. NO.			ELEC. DES. APP.	MECH. DES. APP.
						LD-1372 0

REQ. PER UNIT	USED ON			LD-1376 C
	MODEL	ASS'Y. NO.	DATE	
1	GPT-200K (AT-105)	A-3473	2-27-64	



MARK TMC PART NO. W/LATEST REV SIONS.

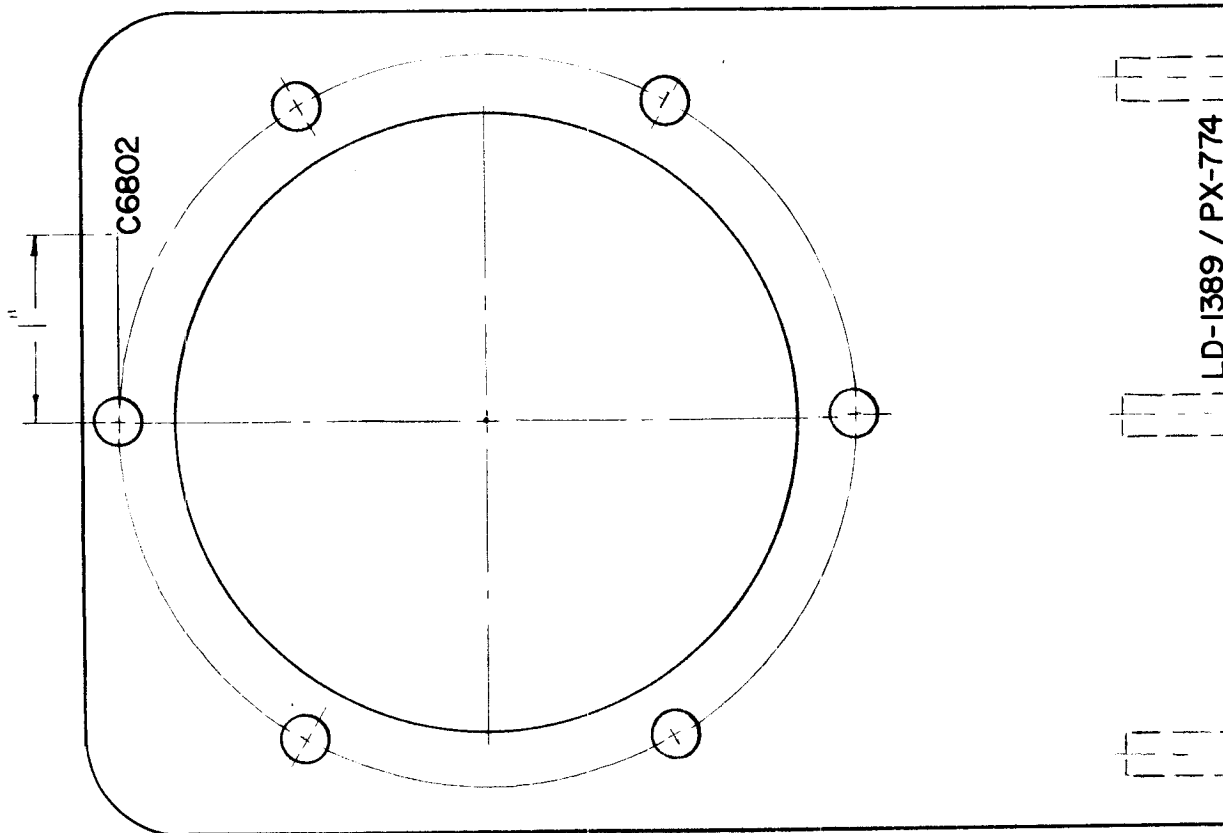
MARKING PROCESS: AS PER TMC SPECIFICATION S-727.

LITTING: 1/8 HIGH BLACK GOTHIC, LOCATED AS SHOWN.

REF: MS 3217

REQ. ITEM	PART NO.	F. BUDETTI	DESCRIPTION	SYMBOL
			THE TECHNICAL MATERIEL CORP. MAMARONECK, NEW YORK	
			STOCK SIZE	
0	ORIGINAL RELEASE FOR PRODUCTION	5-13-64	0 A.M.	
SYM	DESCRIPTION	DATE	CH. NO.	DRAFTS
			CHECKER	ENG. APP.
	UNLESS OTHERWISE SPECIFIED DIMENSIONS ARE IN INCHES AND INCLUDE CHEMICALLY APPLIED OR PLATED FINISHES	SCALE	1" = 1"	
DECIMALS	FRACTIONS	CODE		
.X ± .05	± 1/64	A		
.XX ± .01	ANGLES			
.XXX ± .005	± 0° 30'			
	TOLERANCES			
			TYPE & TEMPER	HEAT TREAT. SPEC.
			SRG	00
			DRAWN	CHECKED
			MECH. DES. APP.	FINAL APPROVAL
			LD-1376	0
			FINISH & SPEC. NO.	ELEC. DES. APP.

REQ. PER UNIT	USED ON			LD-1389	O
	MODEL	ASS'Y. NO.	DATE		
1	GPT-200K(AT-105)	A-2765	1-21-64		



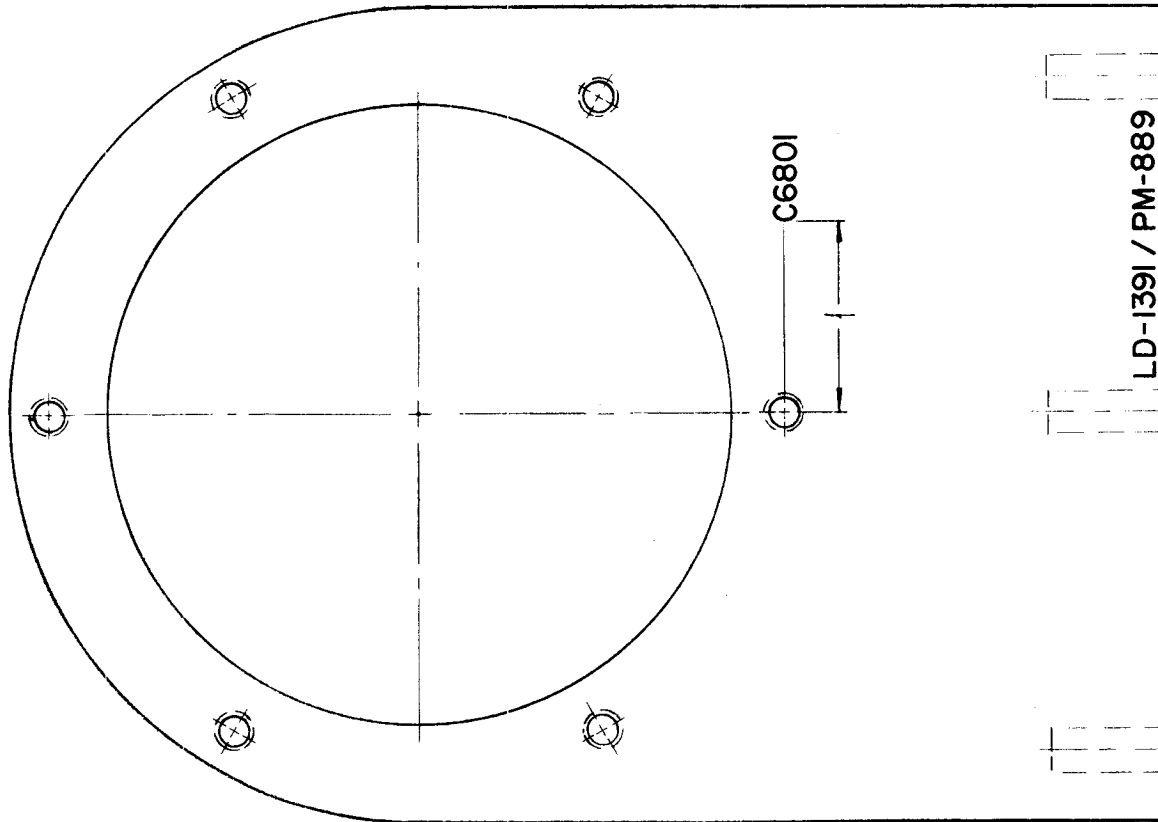
MARKING PROCESS: AS PER TMC SPECIFICATION S-727.

LETTERING: 1/8 HIGH BLACK GOTHIC, LOCATED AS SHOWN.

REF: PX 774

							REQ. ITEM	PART NO.	F. BUDETTI	DESCRIPTION	SYMBOL
									THE TECHNICAL MATERIEL CORP. MAMARONECK. NEW YORK		
									MARKING PROCESS: AS PER TMC SPEC. S-727		
									MARKING, SUPPORT CAPACITOR		
O	ORIGINAL RELEASE FOR PRODUCTION	5-13-64	O	A.M.							
SYM	DESCRIPTION	DATE	CH. NO.	DRAFTS	CHECKER	ENG. APP.	MATERIAL				
UNLESS OTHERWISE SPECIFIED DIMENSIONS ARE IN INCHES AND INCLUDE CHEMICALLY APPLIED OR PLATED FINISHES		SCALE		1" = 1"					SRG	aa	
DECIMALS .X ± .05 .XX ± .01 .XXX ± .005		FRACTIONS ± 1/64 ANGLES ± 0° 30'		CODE			TYPE & TEMPER	HEAT TREAT. SPEC.	DRAWN	CHECKED	FINAL APPROVAL
TOLERANCES											
							FINISH & SPEC. NO.		REC. DES. APP.	MECH. DES. APP.	LD-1389 O

REQ. PER UNIT	USED ON			LD-1391 O
	MODEL	ASS'Y. NO.	DATE	
1	GPT-200K (AT-105)	A-2766	1-23-64	



MARK TMC PART NO.
W/LATEST REVISIONS

MARKING PROCESS: AS PER TMC SPECIFICATION S-727.

LETTERING: 1/8 HIGH BLACK GOTHIC, LOCATED AS SHOWN.

REF: PM 889

							REQ. ITEM	PART NO.	F. BUDETTI	DESCRIPTION	SYMBOL
									THE TECHNICAL MATERIEL CORP. MAMARONECK. NEW YORK		
									MARKING PROCESS: AS PER TMC SPEC. S-727		
									MARKING SUPPORT CAPACITOR		
○	ORIGINAL RELEASE FOR PRODUCTION	5-13-64	0	A.M.							
SYM	DESCRIPTION	DATE	CH. NO.	DRAFTS	CHECKER	ENG. APP.	MATERIAL				
UNLESS OTHERWISE SPECIFIED DIMENSIONS ARE IN INCHES AND INCLUDE CHEMICALLY APPLIED OR PLATED FINISHES		SCALE		1=1					SRG	aa	RJC
DECIMALS .X ± .05 .XX ± .01 .XXX ± .005		FRACTIONS ± 1/64 ANGLES ± 0° 30'		CODE A			TYPE & TEMPER	HEAT TREAT. SPEC.	DRAWN	CHECKED	FINAL APPROVAL
TOLERANCES									DR	3/19/64	LD-1391 O
							FINISH & SPEC. NO.	ELEC. DES. APP.	MECH. DES. APP.		

