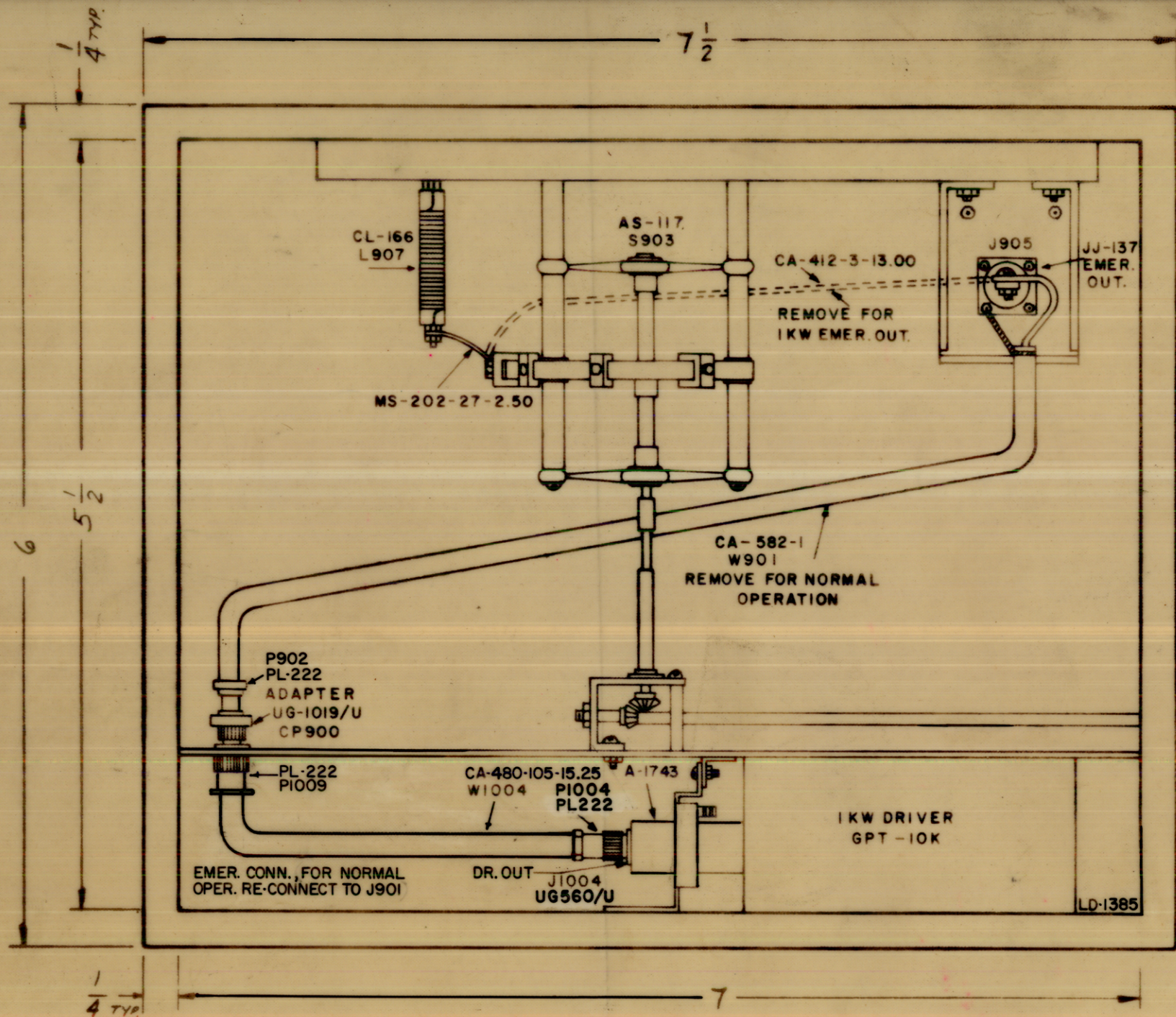


LD-1385 A



NOTES:
 1-ALL LETTERING & LINEWORK TO BE BLACK ON A WHITE BACKGROUND.
 2-TO BE SUPPLIED WITH ADHESIVE BACKING.

NOTE:
 PRINTED DIRECTLY ON FACE OF PLASTIC.

NOTICE TO PERSONS RECEIVING THIS DRAWING

THE TECHNICAL MATERIEL CORPORATION claims proprietary right in the material disclosed hereon. This drawing is issued in confidence for engineering information only and may not be reproduced or used to manufacture anything shown hereon without permission from THE TECHNICAL MATERIEL CORPORATION to the user. This drawing is loaned for mutual assistance and is subject to recall at any time.

Property of:
 THE TECHNICAL MATERIEL CORPORATION
 MAMARONECK, NEW YORK

SYM	DESCRIPTION	DATE	CH. NO.	DRAFTS	CHECKER	ENG APP.
A	ON U/O GPT 10K(17) DELE., AX-510 ADD. UG560/U WAS P1004 P1004/PL222 WAS UG560/U	7.22.64	11816	we	@	QJB

UNLESS OTHERWISE SPECIFIED:
 DIMENSIONS ARE IN INCHES
 TOLERANCES ON FRACTIONS ± 1/64 DECIMALS ± .008 ANGLES ± 1/2°

SCALE:
 MAXIMUM ALLOWABLE TOLERANCES HAVE BEEN DETERMINED AND ANY DEVIATIONS WILL BE CAUSE FOR REJECTION. REMOVE ALL BURRS AND SHARP EDGES

1	CPT40K(17)	AX-510		
REQ. PER UNIT	MODEL	SECTION	ASS'Y. NO.	DATE
	USED ON			

REQ. ITEM	PART NO.	DESCRIPTION	SYMBOL
	.015 THICK	THE TECHNICAL MATERIEL CORP. MAMARONECK, NEW YORK	
	STOCK SIZE		
	WHITE OPAQUE VINYL PLASTIC	1 KW EMERGENCY OUTPUT	
	MATERIAL		
		JCB a.a. RAC 3/2/64	
	TYPE & TEMPER	DRAWN	CHECKER
	HEAT TREAT. SPEC.	QJB	L-B.
	FINISH & SPEC. NO.		FINAL APPROVAL
		ELEC. DES. APP.	MECH. DES. APP.
			LD-1385 A