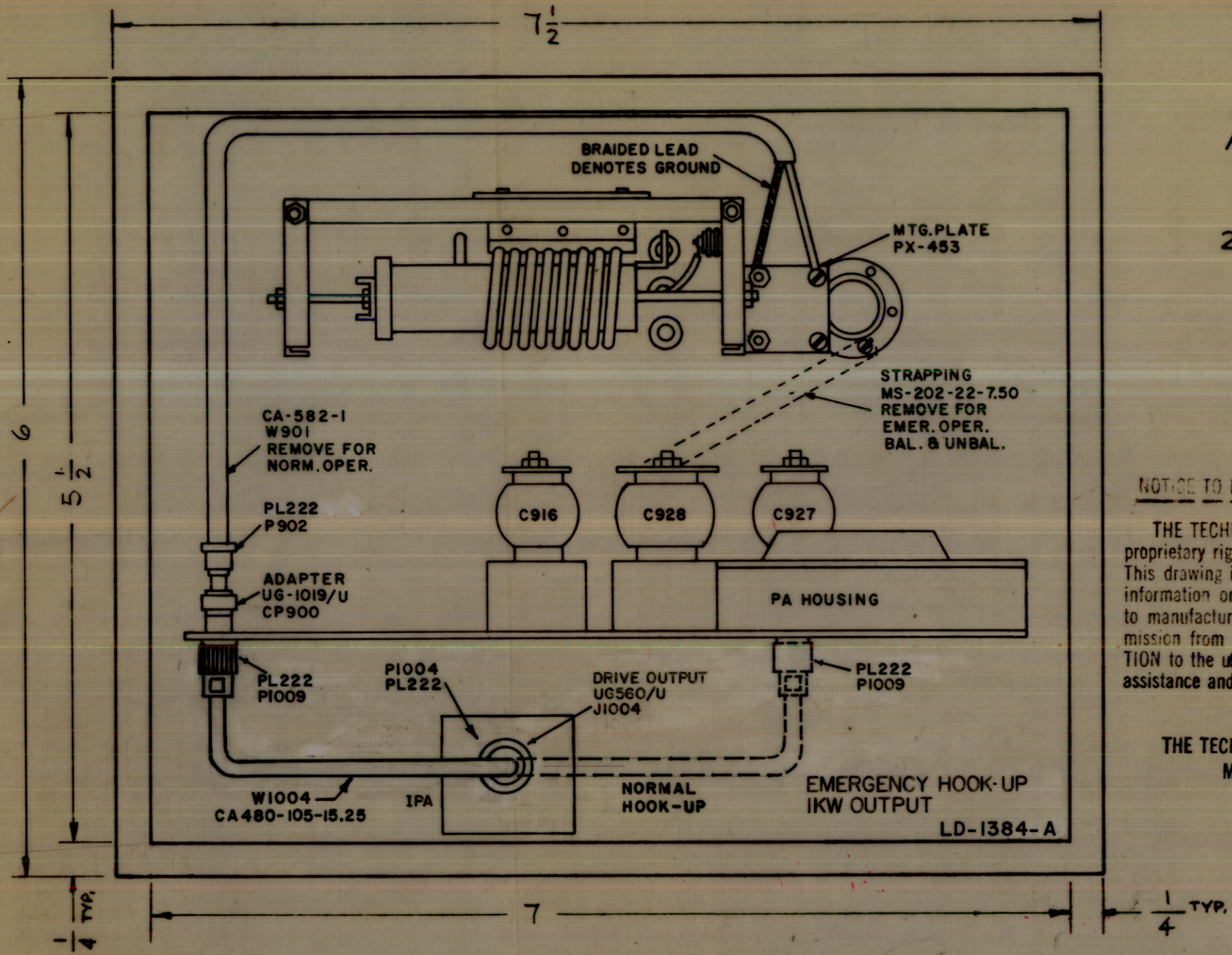


LD-1384 A



NOTES -  
 1- ALL LETTERING & LINE WORK TO BE BLACK ON A WHITE BACKGROUND.  
 2- TO BE SUPPLIED WITH ADHESIVE BACKING.

NOTE:  
 PRINTED DIRECTLY ON FACE OF PLASTIC.

NOTICE TO PERSONS RECEIVING THIS DRAWING

THE TECHNICAL MATERIEL CORPORATION claims proprietary right in the material disclosed hereon. This drawing is issued in confidence for engineering information only and may not be reproduced or used to manufacture anything shown hereon without permission from THE TECHNICAL MATERIEL CORPORATION to the user. This drawing is loaned for mutual assistance and is subject to recall at any time.

Property of:  
 THE TECHNICAL MATERIEL CORPORATION  
 MAMARONECK, NEW YORK

A	PI004 (PL222) & NORMAL HOOK-UP ADDED W1004 (CA480-105-15.25) WAS CA-437 (W1004) PL222 WAS UG-59B/U (3 PLACES)	7.22.64	11816	WSB	@	DB
SYM	DESCRIPTION	DATE	CH. NO.	DRAFTS	CHECKER	ENG. P.
UNLESS OTHERWISE SPECIFIED:		SCALE:				
DIMENSIONS ARE IN INCHES		MAXIMUM ALLOWABLE TOLERANCES HAVE BEEN DETERMINED AND ANY DEVIATIONS WILL BE CAUSE FOR REJECTION.				
TOLERANCES ON FRACTIONS ± 1/64 DECIMALS ± .005 ANGLES ± 1/2°		REMOVE ALL BURRS AND SHARP EDGES				

1	GPT-10K (17)	AX-509	3-3-64
REQ. PER UNIT	MODEL	SECTION	ASSY. NO.
USED ON			

REQ. ITEM	PART NO.	DESCRIPTION	SYMBOL
	.015 THICK	THE TECHNICAL MATERIEL CORP. MAMARONECK, NEW YORK	
	STOCK SIZE		
	WHITE OPAQUE VINYL PLASTIC	DIAGRAM, EMERGENCY HOOK-UP	
	MATERIAL		
		JCB a.a. RAC 3/3/64	
		DRAWN	CHECKER
		DB	L.B.
		FINAL APPROVAL	
		LD-1384 A	
		ELEC. DES. APP.	MECH. DES. APP.