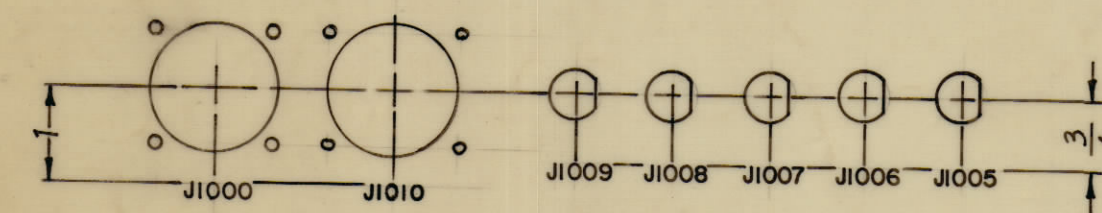
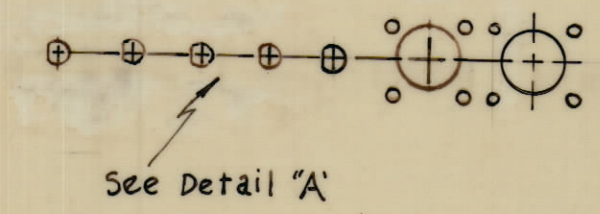


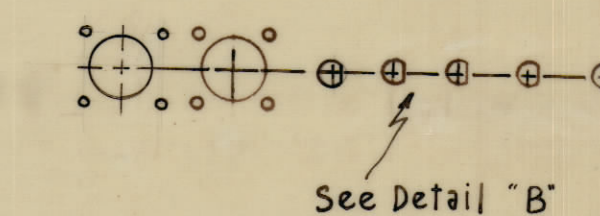
DETAIL "A"



DETAIL "B"



See Detail "A"



See Detail "B"

LD-1381 / MS-3679

MARK TMC PART NO. WITH LATEST REVISION LETTER

MARKING PROCESS: AS PER TMC SPECIFICATION S-727.  
 LETTERING: 1/8 HIGH BLACK GOTHIC, LOCATED AS SHOWN.

A	-	ON DET. "A" P3054 & J1010 ADD, ON DET. "B" J1010 ADD.	1-29-65	13348	hrc	W	200
O	-	ORIGINAL RELEASE FOR PRODUCTION	5-7-64	0	A.M.		
XI	P 3051 WAS P3050		5-8-64		SRG		
BYM	ZONE	DESCRIPTION	DATE	CH. NO.	DRAFTS	CHECKER	ENG. APP.
UNLESS OTHERWISE SPECIFIED:		SCALE DO NOT SCALE					
DIMENSIONS ARE IN INCHES		MAXIMUM ALLOWABLE TOLERANCES HAVE BEEN DETERMINED AND ANY DEVIATIONS WILL BE CAUSE FOR REJECTION. REMOVE ALL BURRS & SHARP EDGES					
TOLERANCES ON FRACTIONS ± 1/64		DECIMALS ± .005		ANGLES ± 1/2°			

REF. TMC DWG. NO. MS-3679

1	GPT-40K ( ) 4			1-27-64
1	GPT-10K ( ) 17 (AX505)			1-18-64
REQ. PER UNIT	MODEL	SECTION	ASST. NO.	DATE

REQ. ITEM	PART NO.	F. BUDETTI	DESCRIPTION	SYMBOL
STOCK SIZE		THE TECHNICAL MATERIEL CORP. MAMARONECK, NEW YORK		
MATERIAL		MARKING, SHIELD LEFT SIDE		
TYPE & TEMPER		MARKING PROCESS: AS PER TMC SPEC S-727.		
HEAT TREAT. SPEC.		WA. FRANCO	CHECKED	FINAL APPROVAL
FINISH & SPEC. NO.		LB	DOB	LD-1381
ELEC. DES. APP.	MECH. DES. APP.	SHEET		OF

LD-1381 A