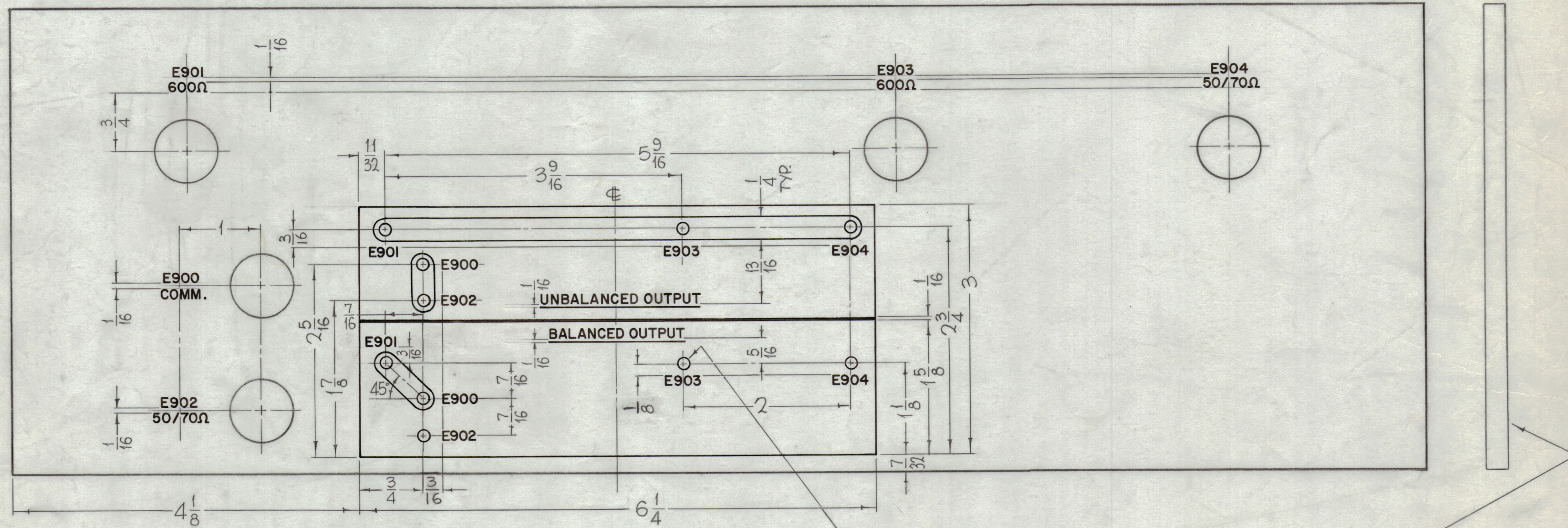


REVISIONS							
ZONE	SYM	DESCRIPTION	DATE	E.M.N. NO.	DRAFT	CHKD	APPD
#	X1	TMC S113 ADDED	1/24/64	X1	A.M.		
#	O	ORIGINAL RELEASE FOR PRODUCTION	1/24/64	O	A.M.		
C, D, 4, 5, 6	A	CHG 1/8 TO 3/16 (2 PLACES) CHG 9/32 D. TO 1/8 D. CHG 5/32 TO 1/8	9/7/64	NONE			16



LD1378 A

FRONT VIEW SHOWN
1/8 DIA. (10 REQ)

MARK LD 1378-A/PX 794-0
1/8 HIGH GOTHIC ON REAR.

UNLESS OTHERWISE SPECIFIED
 MARKING PROCESS: AS PER TMC SPECIFICATION S-727.
 LETTERING: 1/8 HIGH WHITE GOTHIC, LOCATED AS SHOWN.
 LINES-.020 WIDE, WHITE.
 S113 FUNGUS PROOFING AFTER MARKING.

NOTES

THE CONTENTS OF THIS DRAWING ARE THE EXCLUSIVE PROPERTY OF THE TECHNICAL MATERIEL CORP. ITS UNAUTHORIZED USE OR REPRODUCTION IN WHOLE OR IN PART IS STRICTLY FORBIDDEN.

REF - TMC DWG NO. PX 794

REQ'D.	ITEM	PART NUMBER	DESCRIPTION	SYMBOL
LIST OF MATERIAL				
MATERIAL		THE TECHNICAL MATERIEL CORP. MAMARONECK, NEW YORK		
FINISH		TITLE MARKING, BOARD, TERMINAL MTG. MARKING METHOD: AS PER TMC SPEC S-727		
DRAWN		DATE	FINAL APPROVAL	DATE
CHECKED		DATE		
ELECT. DES.		DATE	LD 1378	A
MECH. DES.		DATE		
DECIMALS		FRACTIONS		
.X ± .05		± 1/64		
.XX ± .01		ANGLES		
.XXX ± .005		± 0° 30'		
SCALE		SHEET		REV. LTR.
1:1		4/21/64		