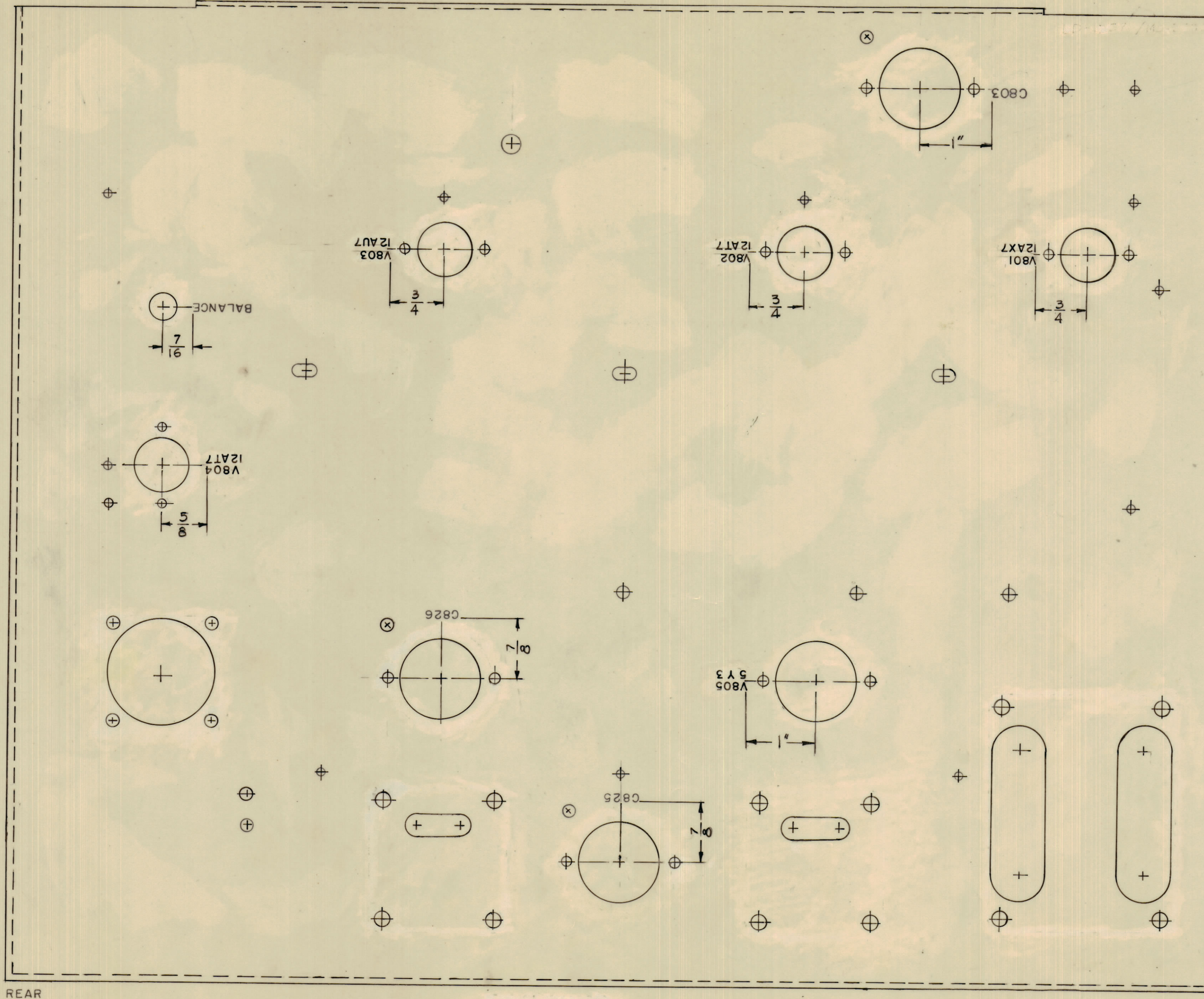


IF IT IS FOUND DESIRABLE TO CHANGE ANY TOLERANCE OR OTHER DETAIL SPECIFIED ON THIS DRAWING NOTIFY THE PURCHASER PROMPTLY.
 MAXIMUM ALLOWABLE TOLERANCES HAVE BEEN DETERMINED AND DEVIATIONS WILL BE CAUSE FOR REJECTION.
 REMOVE ALL BURRS AND SHARP EDGES

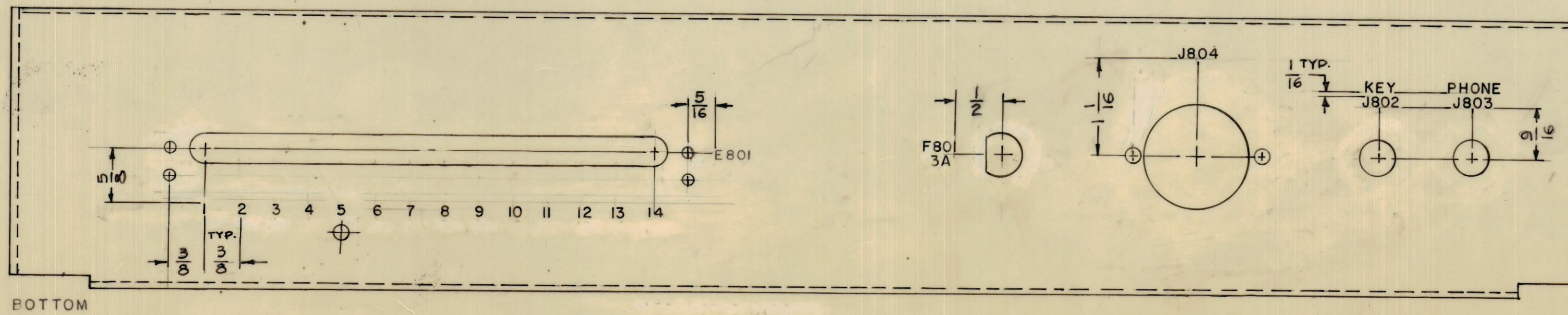
NOTICE TO PERSONS RECEIVING THIS DRAWING
 THE TECHNICAL MATERIEL CORPORATION claims proprietary right in the material disclosed hereon. This drawing is issued in confidence for engineering information only and may not be reproduced or used to manufacture anything shown hereon without permission from THE TECHNICAL MATERIEL CORPORATION to the user. This drawing is loaned for mutual assistance and is subject to recall at any time.
 Property of:
 THE TECHNICAL MATERIEL CORPORATION
 MAMARONECK, NEW YORK

FRONT CHASSIS



REAR

NOTE
 UNLESS OTHERWISE SPECIFIED
 1) MARKING PROCESS: AS PER TMC SPEC. S-727
 2) LETTERING: 1/8 HIGH BLACK, GOTHIC LOCATED AS SHOWN
 3) SPACING WILL BE 1/16 BETWEEN LETTER GROUPS



BOTTOM

REF ~ MS - 3492

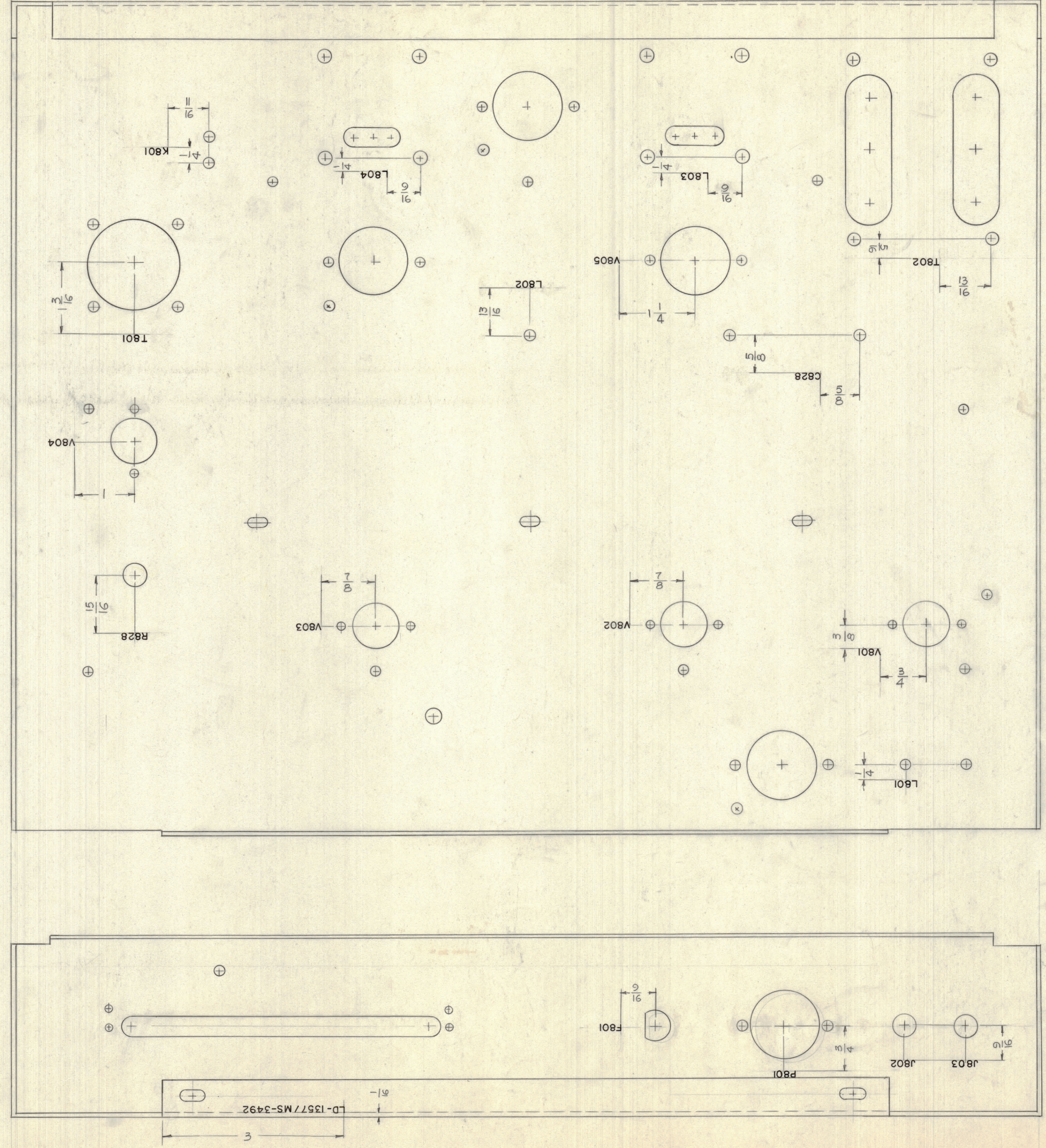
REQ. ITEM	PART NO.	DESCRIPTION	SYMBOL
THE TECHNICAL MATERIEL CORP. MAMARONECK, NEW YORK			
MARKING, CHASSIS (EXTERIOR VIEWS)			
MARKING METHOD: AS PER TMC S-727			
DRAWN G.D.L.		MECH. DES. APP. 7/22/63	
CHECKED		FINAL APPROVAL	
SHEET 1 OF 2		LD-1357	

ISSUE	ITEM	CHANGED FROM	DATE	EN. NO.	DRAFTS	CHECKER	ENG. APP.
TOLERANCES							
ALL OTHERS		DEC. DIM. ±		DRILL PUNCH, COMMERCIAL STOCK			
		FRAC. DIM. ±		SIZES AND MANUFACTURERS			
		ANGULAR DIM. ±		TOLERANCES ARE NOT INCLUDED.			

1	RTC-2	PROJECT NO.	ASSY. NO.	9-16-63
REQ PER UNIT	MODEL	PROJECT NO.	ASSY. NO.	DATE
USED ON				

LD-1357

REVISIONS					
ZONE	SYM	DESCRIPTION	DATE	E.M.N. NO.	APPD



LD-1357

REF: MS-3492

REQ'D.	ITEM	PART NUMBER	DESCRIPTION	SYMBOL
LIST OF MATERIAL				
MATERIAL				
FINISH				
THE TECHNICAL MATERIEL CORP. MAMARONECK, NEW YORK				
TITLE MARKING, CHASSIS (INTERIOR VIEWS) MARKING METHOD: AS PER TMC S-727				
QUANTITY	UNIT	MODEL USED ON	DATE	FINAL APPROVAL
SCALE 1:1			DATE 9-20-63	DATE 9-29-63
UNLESS OTHERWISE SPECIFIED DIMENSIONS ARE IN INCHES AND INCLUDE CHEMICALLY APPLIED OR PLATED FINISHES			DRAWN G.D.L.	DATE 9-20-63
DECIMALS .X ± .05 .XX ± .01 XXX ± .005			CHECKED [Signature]	DATE 9-29-63
FRACTIONS ± 1/64 ANGLES ± 0° 30'			ELECT. DES.	DATE
TOLERANCES			MECH. DES.	DATE
			DATE	DATE
			SHEET	REV. LTR.

UNLESS OTHERWISE SPECIFIED:
1) MARKING PROCESS: AS PER TMC SPEC. S-727.
2) LETTERING: 1/8 HIGH BLACK, GOTHIC AS SHOW.

NOTES

THE CONTENTS OF THIS DRAWING ARE THE EXCLUSIVE PROPERTY OF THE TECHNICAL MATERIEL CORP. ITS UNAUTHORIZED USE OR REPRODUCTION IN WHOLE OR IN PART IS STRICTLY FORBIDDEN.