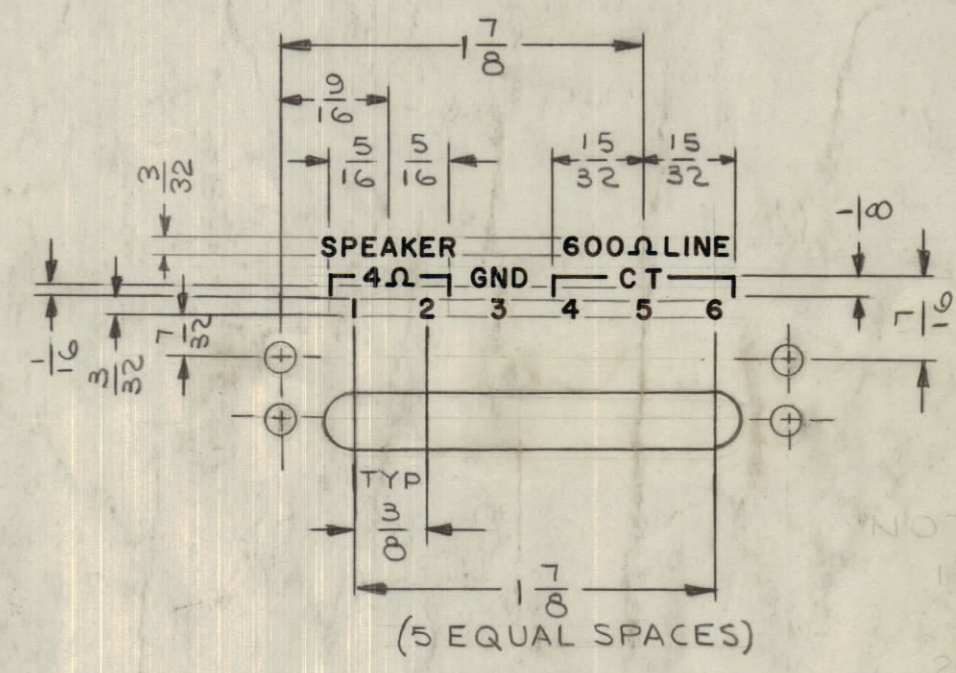
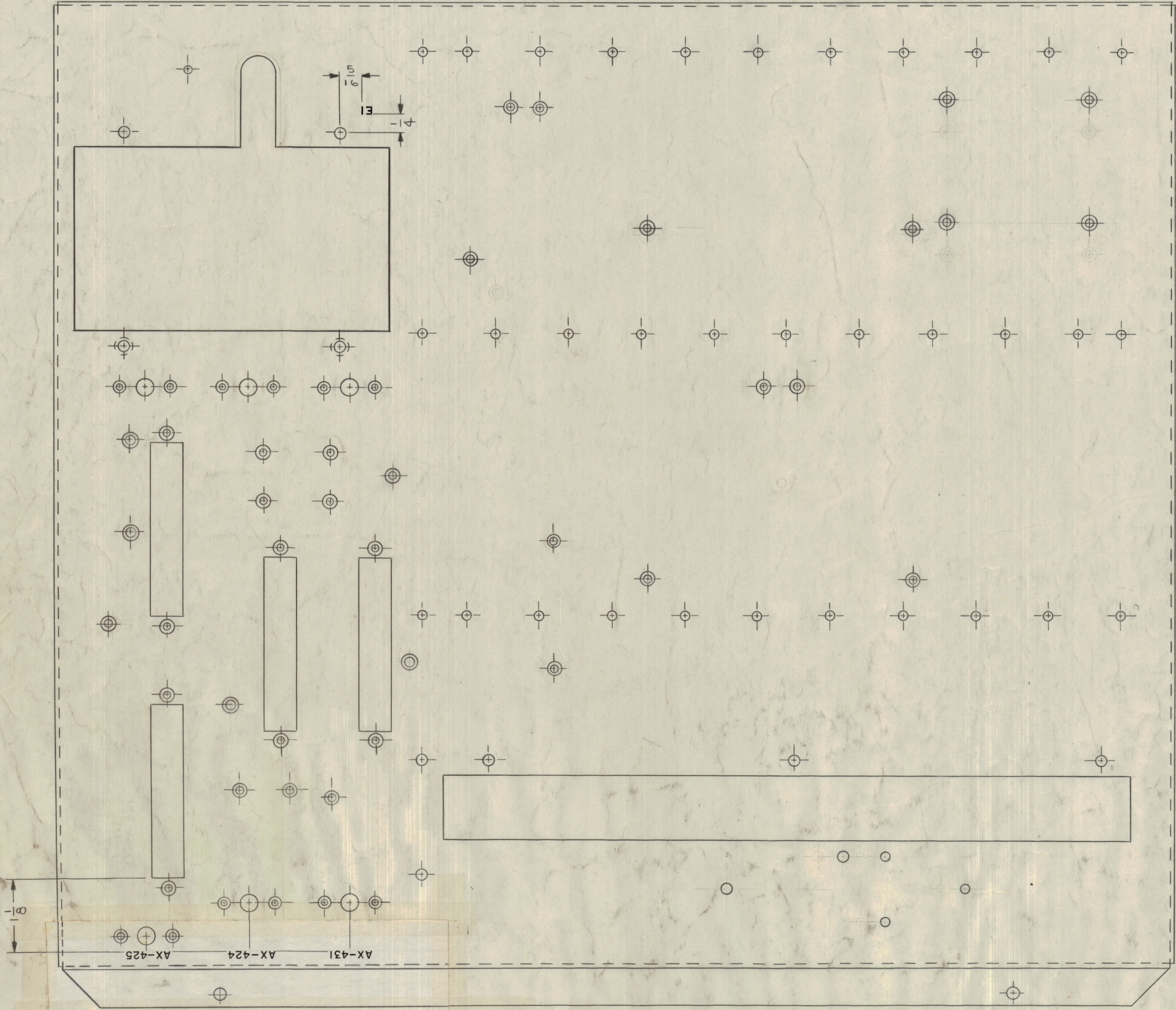
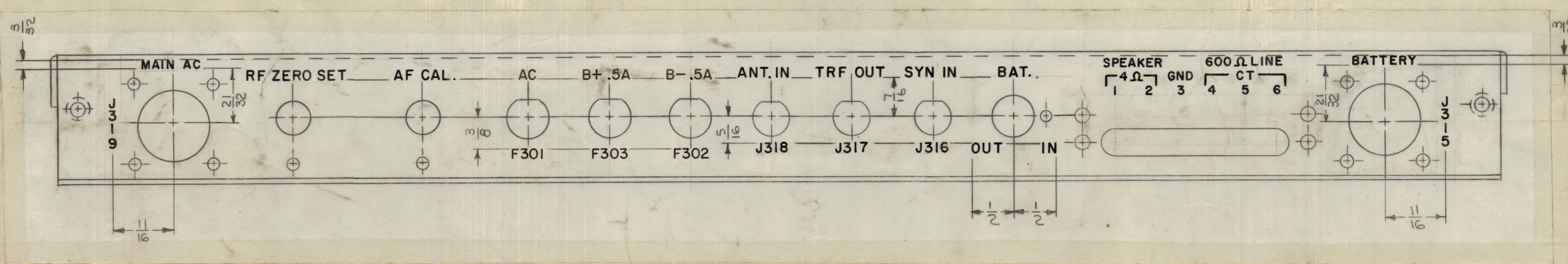


REVISIONS						
ZONE	SYM	DESCRIPTION	DATE	E.M.N. NO.	DRAFT	CHKD
#	X1	SEE MS-3404 FOR REVISION "X1"	9/20/63	1	GS	
#	X2	SEE MS-3404 FOR REVISION "X2"	11/13/63	2	GS	
#	X3	REVISED ALL "J" NOS., WERE FROM J301 THRU J305.	11/20/63	3	JL	
B10	X4	LETTERING AX-431 WAS AF A3201; AX-424 WAS BFO A3168; AX-425 WAS IF A3181	12/17/63	4	GS	
A9	X5	FUSE DESCRIPTIONS ADDED ON REAR APRON SYMBOLS F301, 302, 303 RELOCATED	2/14/64	5	GS	
#	0	ORIGINAL RELEASE FOR PRODUCTION	5/12/64	0	A.M.	



NOTES:
 1. ALL LETTERING TO BE 1/8 HIGH BLACK GOTHIC.
 2. MARKING PROCESS AS PER TMC SPEC S-727.
 3. LOCATE APPROX. AS SHOWN.
 - UNLESS OTHERWISE SPECIFIED -

MARKING PROCESS: AS PER TMC SPECIFICATION S-727.
 LETTERING: 1/8 HIGH BLACK GOTHIC, LOCATED AS SHOWN.
 ALL LETTER GROUPS TO BE CENTERED ON HOLES.



REF.: MS-3404

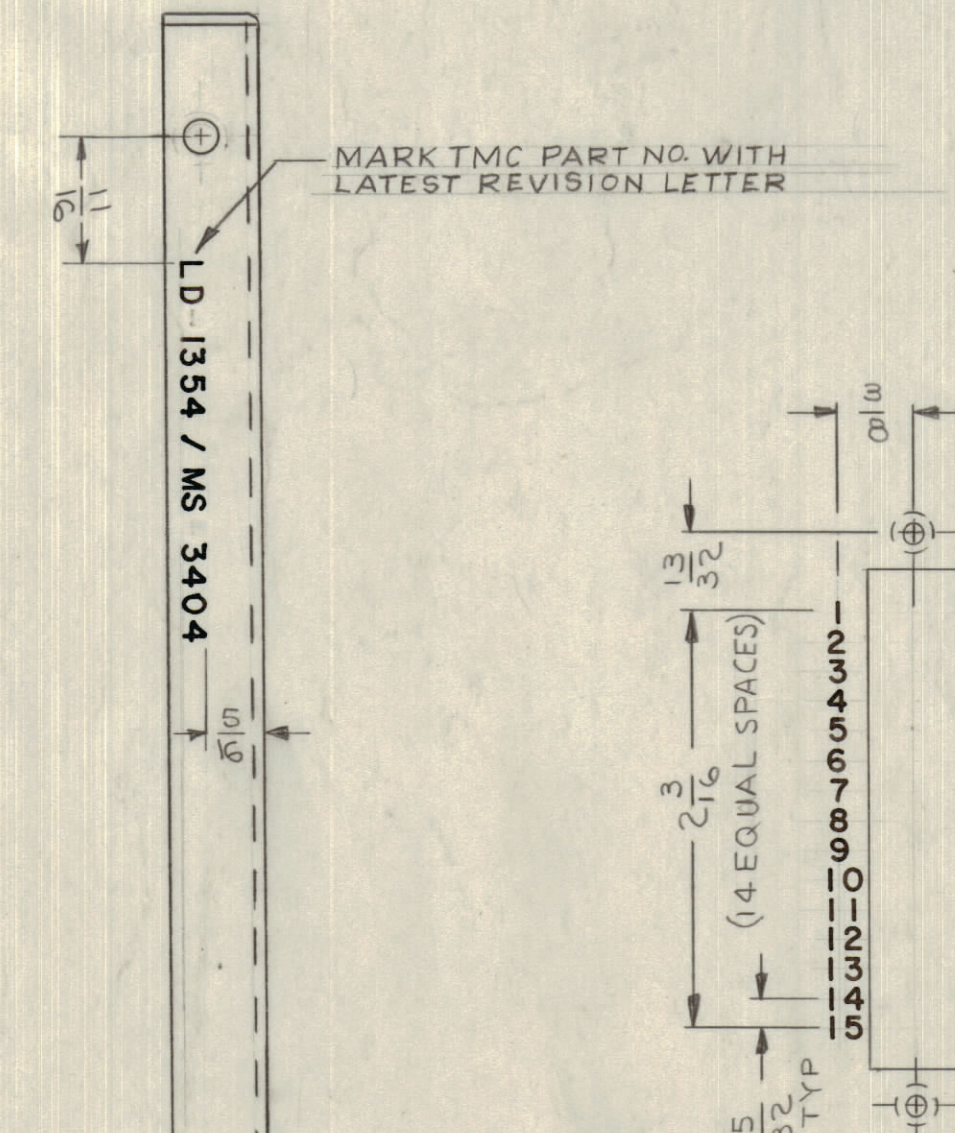
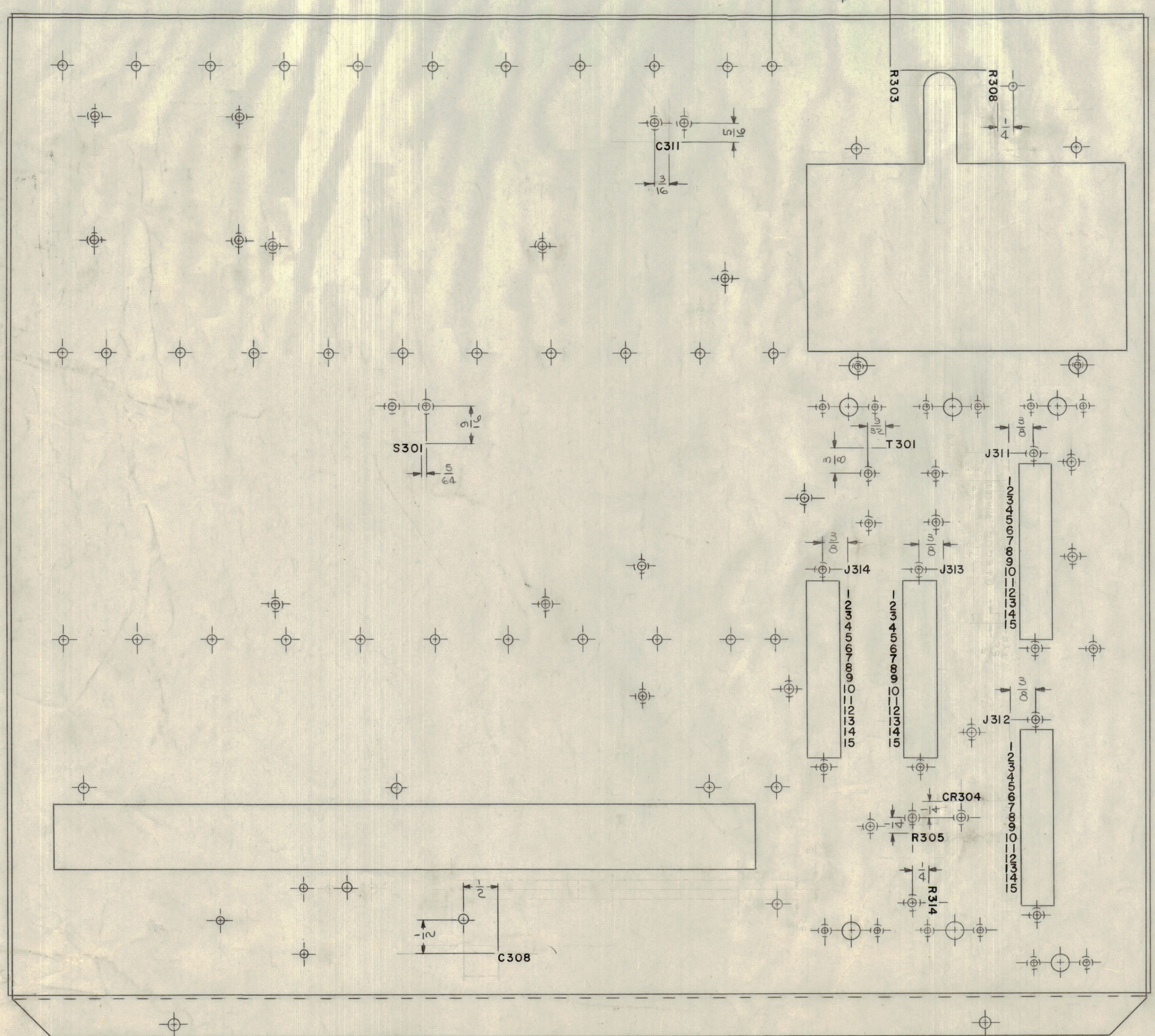
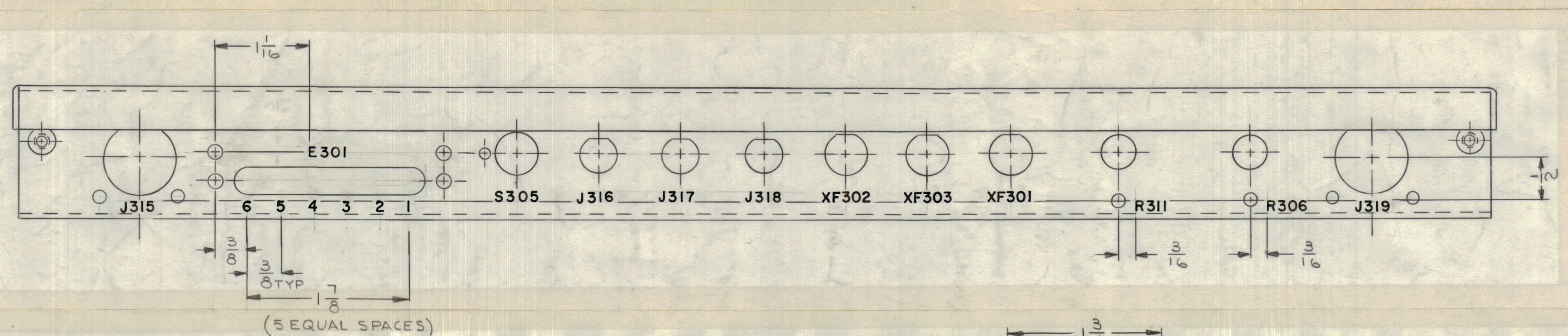
QTY./UNIT	MODEL USED ON	ASSY. NO.
1	VLR-1	AX-434

REQ'D.	ITEM	PART NUMBER	DESCRIPTION	SYMBOL
M. GELLMAN LIST OF MATERIAL				
THE TECHNICAL MATERIEL CORP. MAMARONECK, NEW YORK				
TITLE: MARKING, CHASSIS, ELECTRICAL, MAIN MARKING METHOD-AS PER TMC S-727				
DRAWN: J. LESHINSKI		DATE: 8/5/63		FINAL APPROVAL: [Signature]
CHECKED: [Signature]		DATE: 8-7-64		
ELECT. DES. [Signature]		DATE: [Signature]		
MECH. DES. [Signature]		DATE: [Signature]		
LD-1354				0
SHEET 1 OF 2				REV. LTR.

NOTES

LD 1354

		REVISIONS					
ZONE	SYM	DESCRIPTION	DATE	E.M.N. NO.	DRAFT	CHKD	APPD
#	X1	SEE MS-3404 FOR REVISION "X1"	1-20-63	1	P.S.		
A3	X2	SEE MS-3404 FOR REVISION "X2"					
F1		ADDED S303	1/3/63	2	JL		
		ADDED R303					
#	X3	REVISED ALL "J" NO.'S, WERE FROM J301 THRU J305.	1/27/63	3	JL		
#	X4	SEE SHEET 1 OF 2, REVISION "X4"	11/17/63	4			
G7	Y5	FUSE SYMBOLS XF301, 302, 303 WERE F301, 302, 303	1/11/64	5			
#	O	ORIGINAL RELEASE FOR PRODUCTION	9/12/64	6	A.M.		



1-DETAIL ABOVE IS FOR CONNECTOR CUTOUTS J311, J312 & J313 ONLY.
 2-CONNECTOR CUTOUT J314 TO BE MARKED SAME AS ABOVE EXCEPT ON OPPOSITE SIDE. (SEE PICTORIAL).

NOTES: -UNLESS OTHERWISE SPECIFIED-
MARKING PROCESS: AS PER TMC SPECIFICATION S-727.
LETTERING: 1/8 HIGH BLACK GOTHIC, LOCATED AS SHOWN.
 ALL LETTER GROUPS TO BE CENTERED ON HOLES.

BOTTOM VIEW

REF: MS-3404

QTY/UNIT	VLR-1	AX-434	REVISION	DATE	APPROVAL
SCALE	CODE	ASBY. NO.			
THE CONTENTS OF THIS DRAWING ARE THE EXCLUSIVE PROPERTY OF THE TECHNICAL MATERIEL CORP. ITS UNAUTHORIZED USE OR REPRODUCTION IN WHOLE OR IN PART IS STRICTLY FORBIDDEN.			DECIMALS	FRACTIONS	
			X ± .05	± 1/64	
			XX ± .01	ANGLES	
			XXX ± .005	± 0° 30'	

REQ'D.	ITEM	PART NUMBER	DESCRIPTION	SYMBOL
M. GELLMAN LIST OF MATERIAL				
THE TECHNICAL MATERIEL CORP. MAMARONECK, NEW YORK				
TITLE: MARKING, CHASSIS, ELECTRICAL, MAIN MARKING METHOD-AS PER TMC S-727				
DRAWN	J. LESHINSKI	DATE	8/5/63	FINAL APPROVAL
CHECKED	@	DATE	8-7-64	
ELECT. DES.		DATE		
MECH. DES.		DATE		

LD 1354 0

LD 1354 0 SHEET 2 OF 2 REV. LTR.