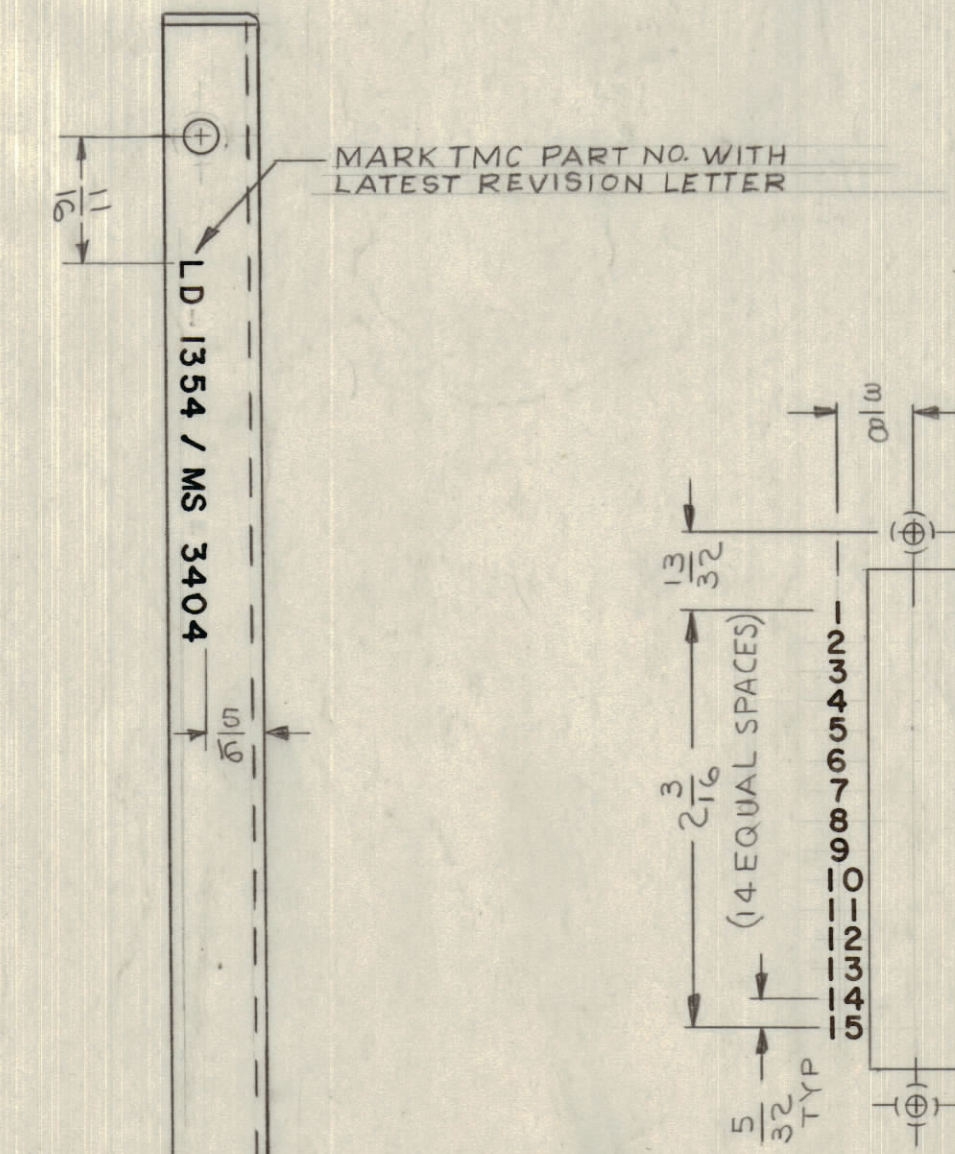
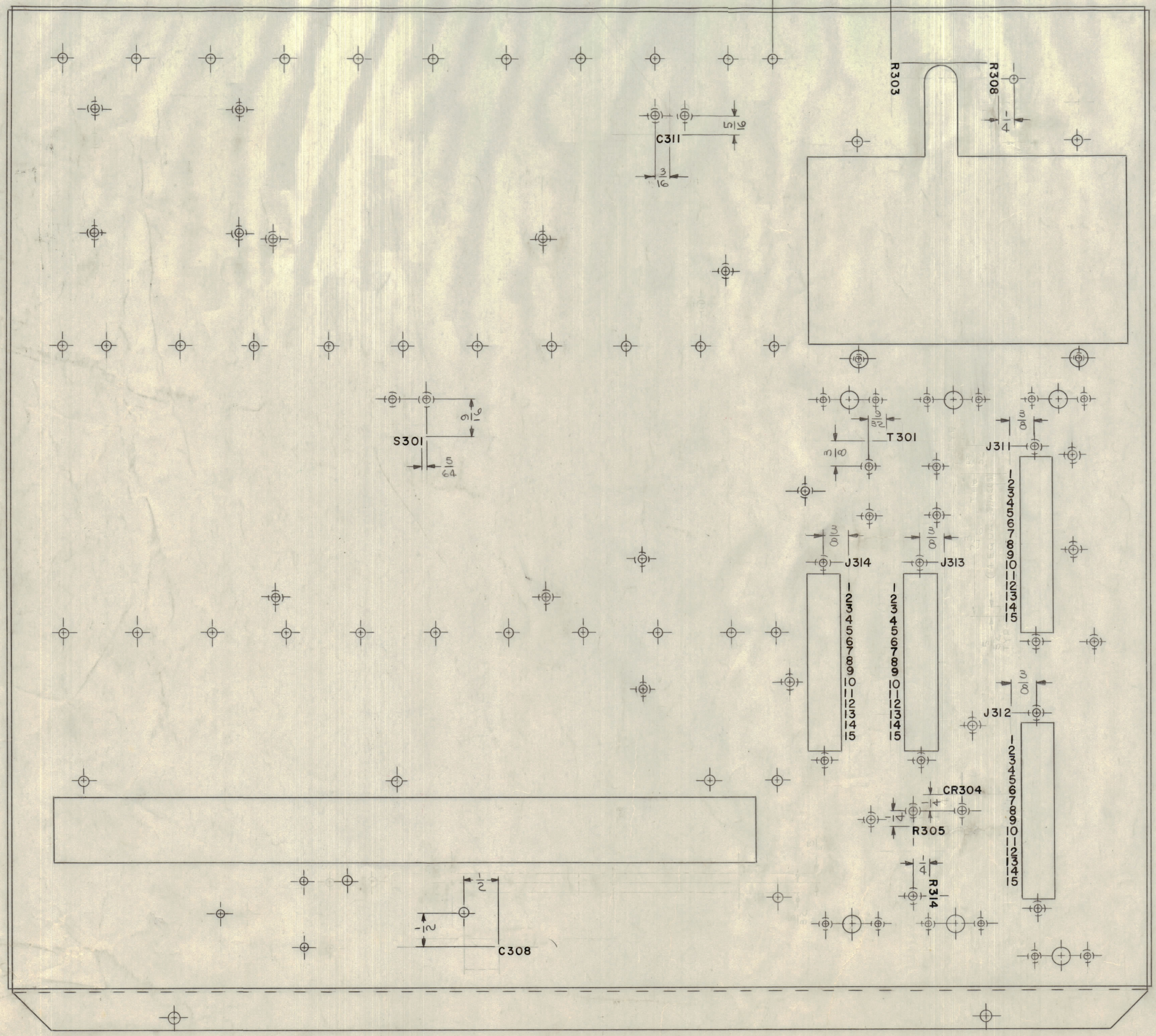
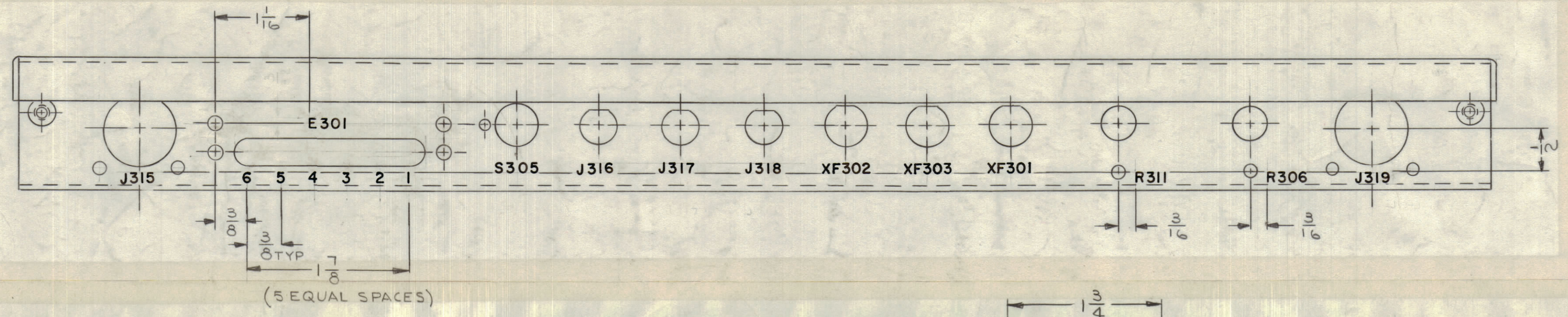


REVISIONS							
ZONE	SYM	DESCRIPTION	DATE	E.M.N. NO.	DRAFT	CHKD	APPD
#	X1	SEE MS-3404 FOR REVISION "X1"	1-20-63	1	P.S.		
A3	X2	SEE MS-3404 FOR REVISION "X2"					
F1		ADDED S303	1/3/63	2	JL		
		ADDED R303					
#	X3	REVISED ALL "J" NO.'S, WERE FROM J301 THRU J305.	1/27/63	3	JL		
#	X4	SEE SHEET 1 OF 2, REVISION "X4"	1/27/63	4			
G7	Y5	FUSE SYMBOLS XF301, 302, 303 WERE F301, 302, 303	1/11/64	5			
#	O	ORIGINAL RELEASE FOR PRODUCTION	9/12/64	6	A.M.		



1-DETAIL ABOVE IS FOR CONNECTOR CUTOUTS J311, J312 & J313 ONLY.  
 2-CONNECTOR CUTOUT J314 TO BE MARKED SAME AS ABOVE EXCEPT ON OPPOSITE SIDE. (SEE PICTORIAL).

NOTES: -UNLESS OTHERWISE SPECIFIED -  
 MARKING PROCESS: AS PER TMC SPECIFICATION S-727.  
 LETTERING: 1/8 HIGH BLACK GOTHIC, LOCATED AS SHOWN.  
 ALL LETTER GROUPS TO BE CENTERED ON HOLES.

LD 1354 0

BOTTOM VIEW

REF: MS-3404

QTY/UNIT	VLR-1	AX-434	RECD.	ITEM	PART NUMBER	DESCRIPTION	SYMBOL
1:1			M. GELLMAN				
SCALE			LIST OF MATERIAL				
THE CONTENTS OF THIS DRAWING ARE THE EXCLUSIVE PROPERTY OF THE TECHNICAL MATERIEL CORP. ITS UNAUTHORIZED USE OR REPRODUCTION IN WHOLE OR IN PART IS STRICTLY FORBIDDEN.			THE TECHNICAL MATERIEL CORP. MAMARONECK, NEW YORK				
UNLESS OTHERWISE SPECIFIED DIMENSIONS ARE IN INCHES AND INCLUDE CHEMICALLY APPLIED OR PLATED FINISHES			TITLE MARKING, CHASSIS, ELECTRICAL, MAIN MARKING METHOD-AS PER TMC S-727				
DECIMALS .X ± .05 .XX ± .01 .XXX ± .005			DRAWN J. LESHINSKI		DATE 8/3/63		
FRACTIONS 1/64 ANGLES ± 0° 30'			CHECKED @		DATE 8-7-64		
			ELECT. DES. J.L.		DATE 2-29-65		
			MECH. DES. J.L.		DATE 2-29-65		
				DATE		SHEET 2 OF 2	
				REV. LTR.		LD 1354 0	

NOTES