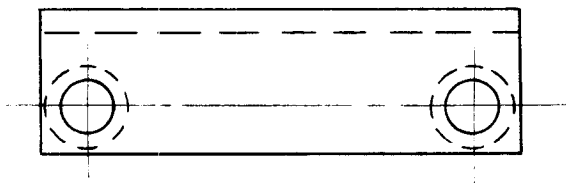
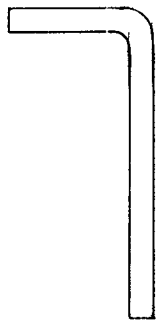
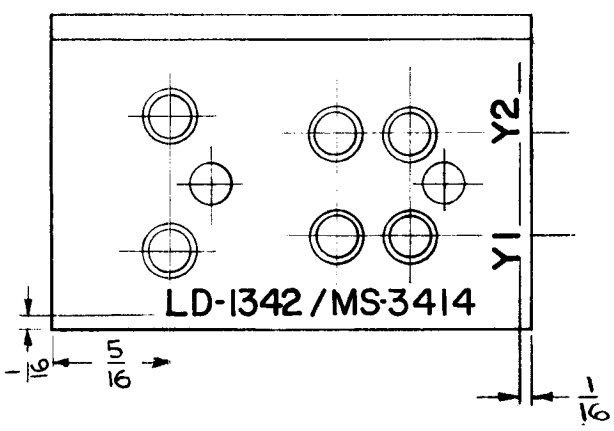


REQ. PER UNIT	USED ON		
	MODEL	ASS'Y. NO.	DATE
1	TTRR		7-10-63
1	TTRT		7-10-63

LD-1342



~ UNLESS OTHERWISE SPECIFIED ~
 1. ALL LETTERING TO BE 3/32 HIGH
 BLACK GOTHIC. LOCATE APPROX.
 AS SHOWN.



REF: MS-3414

REQ. ITEM	PART NO.	JORDAN DESCRIPTION E 3037-221		SYMBOL							
		THE TECHNICAL MATERIEL CORP. MAMARONECK. NEW YORK									
		MARKING, BRACKET, CRYSTAL, SOCKET									
		MARKING PROCESS: PER TMC SPEC. 5727									
SYM	DESCRIPTION	DATE	CH. NO.	DRAFTS	CHECKER	ENG. APP.	MATERIAL				
	UNLESS OTHERWISE SPECIFIED DIMENSIONS ARE IN INCHES AND INCLUDE CHEMICALLY APPLIED OR PLATED FINISHES	SCALE	2:1								
	DECIMALS .X ± .05 .XX ± .01 .XXX ± .005	FRACTIONS ± 1/64 ANGLES ± 0° 30'	CODE	A							
	TOLERANCES										
							TYPE & TEMPER	HEAT TREAT. SPEC.	DRAWN	CHECKED	FINAL APPROVAL
									RON KOHN 17 JULY 1963		
							FINISH & SPEC. NO.	ELEC. DES. APP.	MECH. DES. APP.	LD-1342	