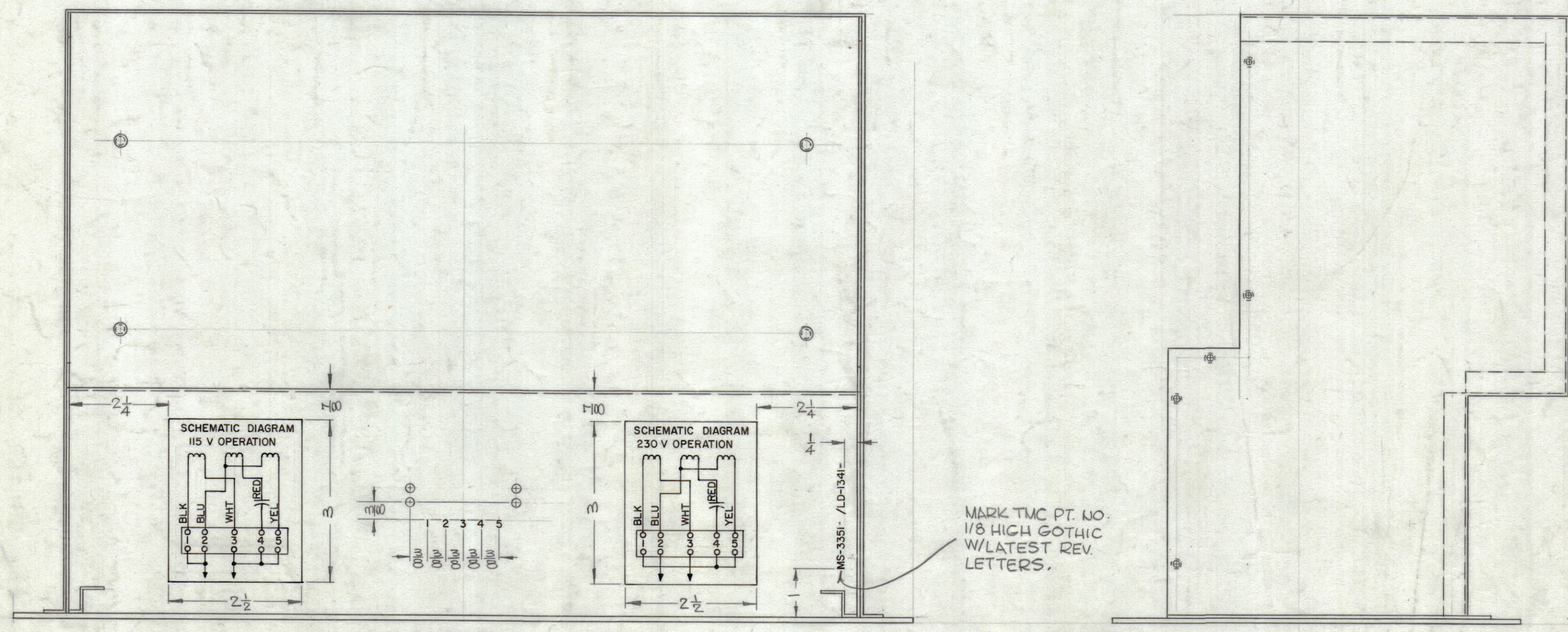


REVISIONS							
ZONE	SYM	DESCRIPTION	DATE	E.M.N. NO.	DRAFT	CHKD	APPD
A		TMC CRT. ADDED. REF. & U/O INFO. DELETED	11/2/65	15086			



INSIDE VIEW OF FAN CHASSIS LOOKING DOWN FROM TOP

TMC P/N	MS-REFERENCE
LD1341	MS3351
LD1341-2	MS4757

MARKING PROCESS: PER TMC SPEC. S-727
 LETTERING: 1/8 HIGH WHITE GOTHIC
 SYMBOLS & LINEWORK TO BE WHITE, LOCATED AS SHOWN

NOTES

Q'TY./UNIT	MODEL USED ON	ASS'Y. NO.
SCALE	CODE	
NONE		

THE CONTENTS OF THIS DRAWING ARE THE EXCLUSIVE PROPERTY OF THE TECHNICAL MATERIEL CORP. ITS UNAUTHORIZED USE OR REPRODUCTION IN WHOLE OR IN PART IS STRICTLY FORBIDDEN.

REQ'D.	ITEM	PART NUMBER	DESCRIPTION	SYMBOL
LIST OF MATERIAL				
MATERIAL		THE TECHNICAL MATERIEL CORP. MAMARONECK, NEW YORK		
FINISH		TITLE MARKING, CHASSIS, FAN MARKING PROCESS: PER TMC SPEC S-727		
UNLESS OTHERWISE SPECIFIED DIMENSIONS ARE IN INCHES AND INCLUDE CHEMICALLY APPLIED OR PLATED FINISHES		DRAWN DATE 4-23-63	FINAL APPROVAL DATE 9-24-63	
DECIMALS .X ± .05 .XX ± .01 .XXX ± .005		CHECKED DATE 7-17-65	DATE 9-24-63	
FRACTIONS ± 1/64 ANGLES ± 0° 30'		ELECT. DES. MECH. DES.	DATE	
		LD-1341		A
		SHEET		REV. LTR.

LD-1341
A