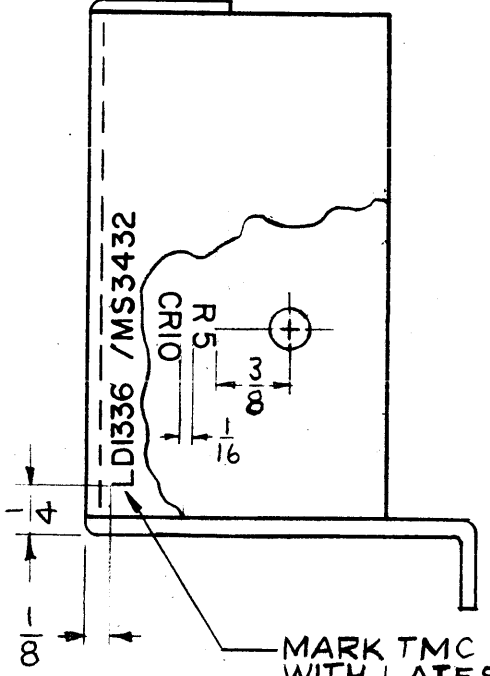
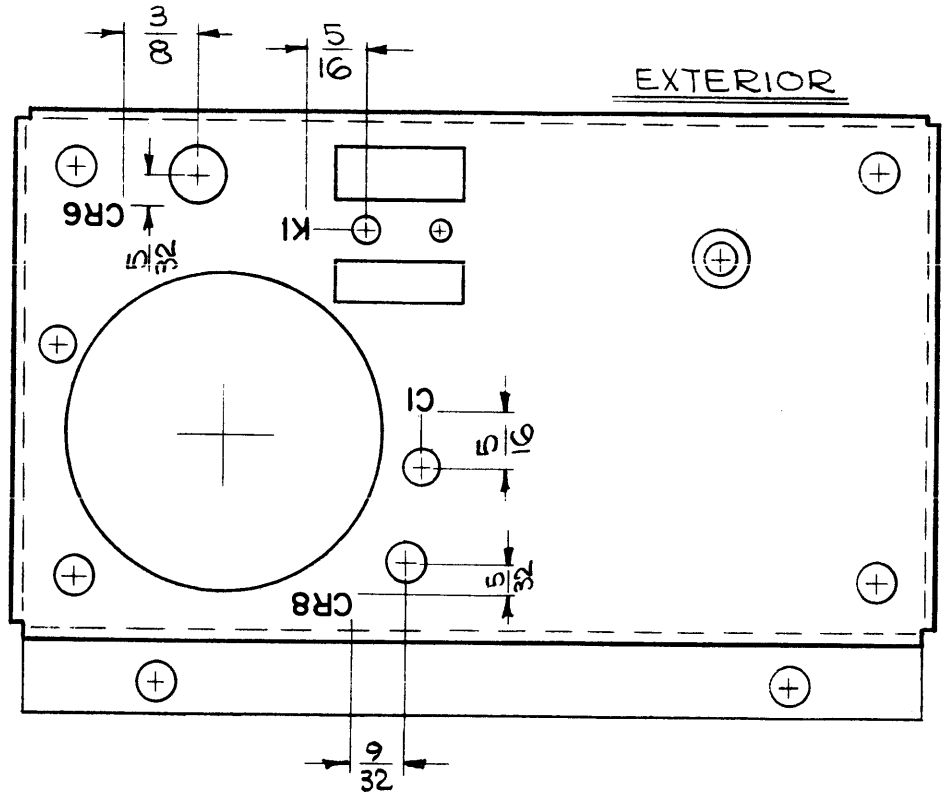
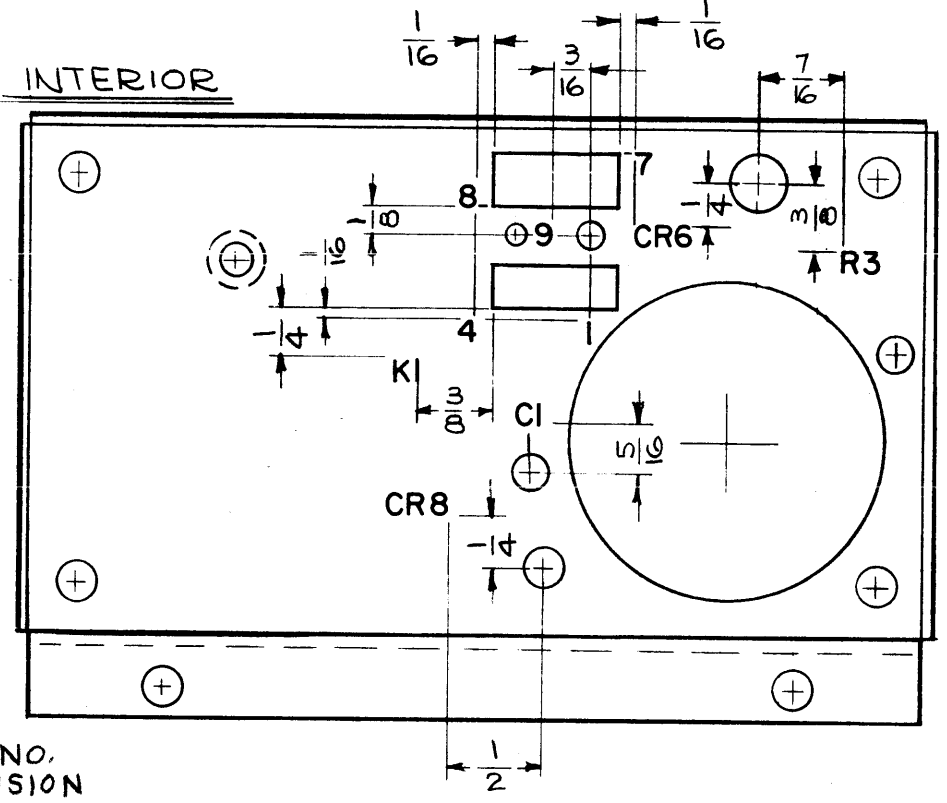


LD 1336 B

REVISIONS						
SYM	DESCRIPTION	DATE	E.M.N. NO.	DRAFT	CHKD	APPD
X1	REDRAWN WITH CHANGES	9-23-63	1	F.S.		
X2	(INTERIOR) CR6 RELOCATED; R3 ADDED	11-12-63	2	F.S.		
O	ORIGINAL RELEASE FOR PRODUCTION	5/12/64	0	A.M.	@	
A	13/64 HOLE & SYM. "CR9" ADDED.	1-28-65	13374	P.L.	@	
B	SYM. "R5, CR10" WAS "CR9"; 1/8 DIM. WAS 5/8 FOR P/N MARKING.	3-19-65	13599	P.L.		



MARK TMC PART NO. WITH LATEST REVISION LETTER.



UNLESS OTHERWISE SPECIFIED.

- 1- MARKING PROCESS: AS PER TMC SPECIFICATION S-727.
- 2- LETTERING: 1/8 HIGH BLACK GOTHIC, LOCATED AS SHOWN.
- 3- LETTER GROUPS TO BE CENTERED ON HOLES OR INDICATING LINES.

REF: MS 3432

1	VLR-1	AX-433
Q'TY./UNIT	MODEL USED ON	ASS'Y. NO.
SCALE 1:1	CODE A	

NOTES

THE CONTENTS OF THIS DRAWING ARE THE EXCLUSIVE PROPERTY OF THE TECHNICAL MATERIEL CORP. ITS UNAUTHORIZED USE OR REPRODUCTION IN WHOLE OR IN PART IS STRICTLY FORBIDDEN.

REQ'D.	ITEM	PART NUMBER	DESCRIPTION	SYMBOL
M. GELLMAN LIST OF MATERIAL				
MATERIAL			THE TECHNICAL MATERIEL CORP. MAMARONECK, NEW YORK	
FINISH			TITLE MARKING, CHASSIS ELECTRICAL - REAR MARKING METHOD PER S-727	
UNLESS OTHERWISE SPECIFIED DIMENSIONS ARE IN INCHES AND INCLUDE CHEMICALLY APPLIED OR PLATED FINISHES		DRAWN 9-23-63 CHECKED @ 5-5-64 ELECTRONS MECH. DES. DATE 5-7-64		FINAL APPROVAL DATE SHEET
DECIMALS .X ± .05 .XX ± .01 .XXX ± .005		FRACTIONS ± 1/64 ANGLER ± 30'		LD 1336 B
				REV. LTR.