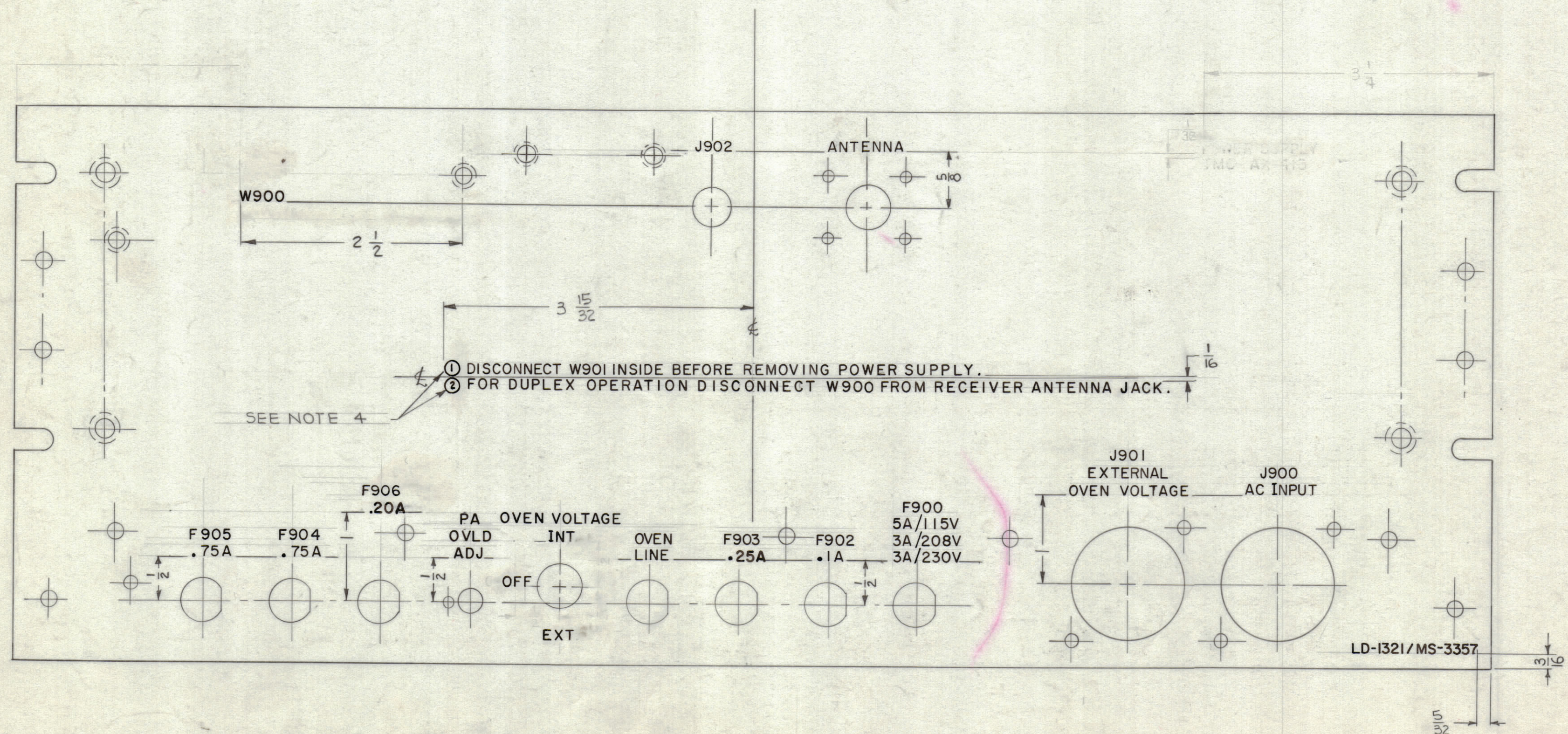
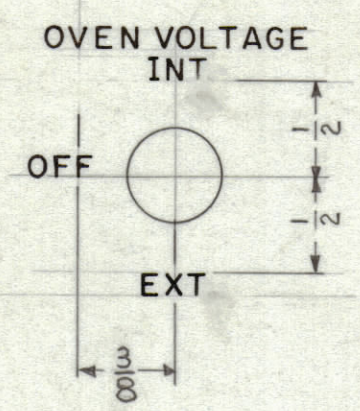


REVISIONS					
ZONE	SYM	DESCRIPTION	DATE	E.M.N. NO.	APPD



① DISCONNECT W901 INSIDE BEFORE REMOVING POWER SUPPLY.
② FOR DUPLEX OPERATION DISCONNECT W900 FROM RECEIVER ANTENNA JACK.

SEE NOTE 4

- UNLESS OTHERWISE SPECIFIED:
1. ALL LETTERING TO BE 1/8 HIGH BLACK GOTHIC. MARKING PROCESS: AS PER TMC SPEC 5727.
 2. ALL LETTERING TO BE CENTERED ABOUT CENTER LINE OF HOLES.
 3. ALL SPACING BETWEEN LINES TO BE 1/32
 4. 5/32 DIA CIRCLE, NUMERALS 3/32 HIGH BLACK GOTHIC.

REF: MS-3357

REQ'D.	ITEM	PART NUMBER	DESCRIPTION	SYMBOL
LIST OF MATERIAL				
MATERIAL			THE TECHNICAL MATERIEL CORP. MAMARONECK, NEW YORK	
FINISH			TITLE MARKING, REAR PLATE MARKING PROCESS: PER TMC SPEC. 5727	
UNLESS OTHERWISE SPECIFIED DIMENSIONS ARE IN INCHES AND INCLUDE CHEMICALLY APPLIED OR PLATED FINISHES		DRAWN <i>W. Jordan</i>	DATE 5/14/63	FINAL APPROVAL <i>BP</i>
DECIMALS .X ± .05 .XX ± .01 .XXX ± .005		CHECKED <i>W. Jordan</i>	DATE 6-11-63	DATE 6 Sept. 63
FRACTIONS ± 1/64 ANGLES ± 0° 30'		ELECT. DES. <i>W. Jordan</i>	DATE 9/16/63	DATE 9/16/63
TOLERANCES		MECH. DES. <i>W. Jordan</i>	DATE 9/16/63	DATE 9/16/63
SHEET				

Q'TY./UNIT	MODEL USED ON	ASS'Y. NO.
1	TTR-10	AX-413
SCALE <i>1/4</i>	CODE A	

NOTES

THE CONTENTS OF THIS DRAWING ARE THE EXCLUSIVE PROPERTY OF THE TECHNICAL MATERIEL CORP. ITS UNAUTHORIZED USE OR REPRODUCTION IN WHOLE OR IN PART IS STRICTLY FORBIDDEN.

LD-1321