

THE CONTENTS OF THIS DRAWING ARE THE EXCLUSIVE PROPERTY OF THE TECHNICAL MATERIEL CORP. ITS UNAUTHORIZED USE FOR REPRODUCTION IN WH LE OR IN PART IS STRICTLY FORBIDDEN.

REQ. PER UNIT

USED ON

MODEL

ASS'Y. NO.

DATE

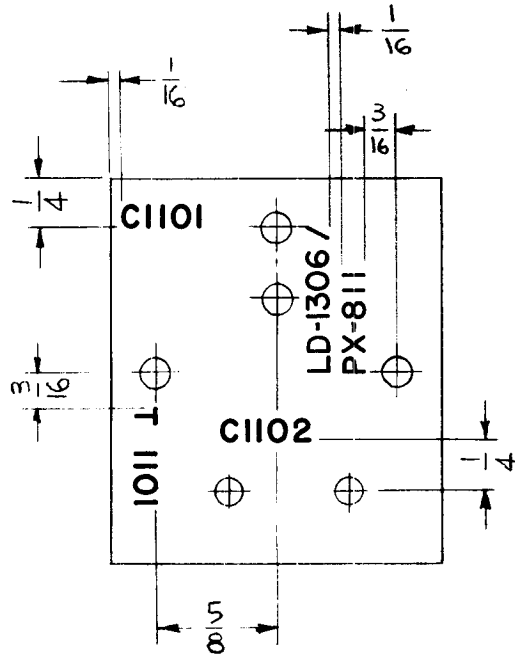
1

TTR-10

AX-409

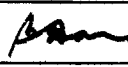
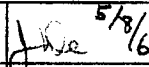

5-8-63

LD-1306



UNLESS OTHERWISE SPECIFIED:
 1. ALL LETTERING TO BE 1/8 HIGH
 BLACK GOTHIC.
 MARKING METHOD: PER TMC SPEC. 5727

REF: PX-811

SYM	DESCRIPTION	DATE	CH. NO.	DRAFTS	CHECKER	ENG. APP.	REQ. ITEM	PART NO.	DESCRIPTION	SYMBOL
									KOHN	E3037-60
							STOCK SIZE		THE TECHNICAL MATERIEL CORP. MAMARONECK, NEW YORK	
									MARKING, BOARD, IPA	
							MATERIAL		MARKING PER SPEC 5-727	
UNLESS OTHERWISE SPECIFIED DIMENSIONS ARE IN INCHES AND INCLUDE CHEMICALLY APPLIED OR PLATED FINISHES							SCALE		  	
							TYPE & TEMPER		DRAWN	
							HEAT TREAT. SPEC.		CHECKED	
							FINISH & SPEC. NO.		ELEC. DES. APP.	
									MECH. DES. APP.	
DECIMALS .X ± .03 .XX ± .01 .XXX ± .005 TOLERANCES							FRACTIONS ± 1/64 ANGLES ± 0° 30'		CODE A	
									LD-1306	